

sonlite®

Easy Stand Alone

THE SUCCESS STORY



Program with computer !

Easy Stand Alone has evolved over the years to become a worldwide reference for architectural lighting control. The range of specific applications continues to grow. It only requires a few minutes to setup the software and get full control of any kind of lights. The IP version, known for its Internet connectivity, has now a new feature allowing synchronization of several interfaces within the same Ethernet network. Our two USB interfaces (the new «low cost» version with connector blocks and the full version with an integrated display and clock), offer a complete and effective solution to new architectural installations.

Control your lights ... without any computer !

The industry standard in stand alone DMX interfaces



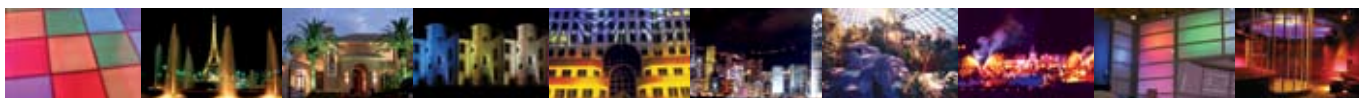
- ✓ The low cost interface, ideal for OEM applications
- ✓ Controls up to 60 DMX channels (125 steps with 20 channels)
- ✓ A connector block for all connections (power, 4 I/O ports, DMX)
- ✓ Simple design for an easy integration in numerous housings



- ✓ A powerful and user friendly interface
- ✓ Controls up to 512 DMX channels (over 1800 steps with 60 channels)
- ✓ All connections are made to front and back panels
- ✓ Clock, 8 I/O ports, 3 buttons, display, DMX input



- ✓ Ethernet connection with a modifiable IP address
- ✓ Several interfaces can be synchronized on the same network
- ✓ Internet connectivity to upgrade shows remotely
- ✓ Clock, 8 I/O ports, 3 buttons, DMX input, control of over 512 channels



10 REASONS why you should choose the WORLD-LEADER

20 years' experience in lighting software, a team of 10 engineers. Our sales multiplied x 5 over the past 5 years. Distributed in 60 countries, software translated in 16 languages. Brochures, advertising, mouse pads, posters, demo CDs, demo boxes ... Powerful and user-friendly software tools, Easy View, Easy Step... Inventor of best-selling USB/DMX interfaces, a world standard. We supply the leading developers and manufacturers in the world. (OEM) Our fixture-library is the most popular & widely-used among professionals. "Sunlite Basic Edition", a marketing revolution in future. Thousands of new enthusiastic Sunlite software users each year.



Simple and intuitive user interface, can be learned in 15 minutes. Winner of the 2004 PLASA Award for Innovation. Winner of the 2005 EDDY Best Lighting Product of the Year. SLES-A-IP interface can also be used as an Art-Net to DMX decoder. Internet capability to update your show through the web using our IP interface. Scheduled triggering (day/time) using the interface's internal clock. Color Manager: the best tool to control RGB/CMY fixtures as a paint program. Lightweight DMX interfaces (200 g), can be easily integrated to existing systems. Includes EasyView 3D, our powerful real-time 3D visualizer. Allows lighting designers away from site to program offline.

THE INDUSTRY STANDARD

EASY STAND ALONE

ScanLibrary



With a few clicks of the mouse button, you can set the channels. The software uses the Sunlite ScanLibrary which is currently the best choice you can make and a guarantee of evolution over the next few years. The ScanLibrary editor is included and allows you to create your own library in just a matter of minutes.

Easy View

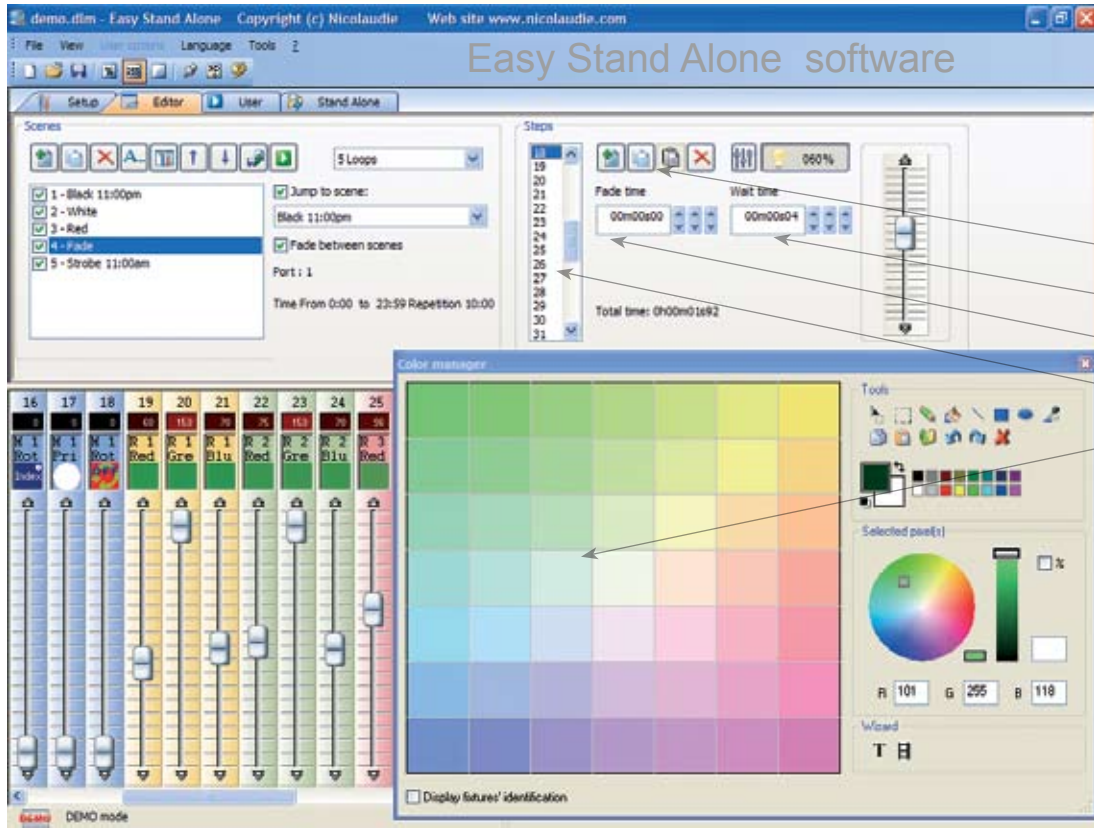


Easy view is the ideal "3D real-time" simulation. You can visualize stages, buildings, traditional lighting projectors as well as your scans, heads, color changers, leds.

See "Magic 3D Easy View" brochure.

1 SETUP: Start the software and Insert your lighting fixtures.

2 EDITOR: Create easily your scenes and steps.



Creating scenes can be carried out without teasing your brains ! In each scene, the software enables you to program a number of steps and loop mode.

- New step
- Wait time
- Fade time
- List of steps
- Color Manager

Each Step has a fade time and a waiting time which can be set. By creating several steps in sequence, you will then build a dynamic scene and even be able to set the number of loops and go on to the next scene automatically.

3 USER: Control your lights in live mode or see them in Easy View

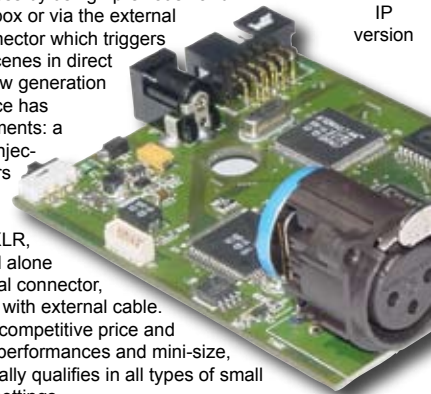
4 STAND ALONE: Store your scenes into the box (without computer)

Easy Stand Alone	SLESA-U6	SLESA-U5	SLESA-IP1
Connection	USB 1.1	USB 2.0	ETHERNET
Ethernet/Internet connectivity			√
DMX channels in live mode	128	512	512
DMX channels in stand alone	60	512	512
Memory capacity with 20 channels	125 steps	4919 steps	5629 steps
Memory capacity with 60 channels	45 steps	1893 steps	2109 steps
Memory capacity with 512 channels		226 steps	259 steps
Powered by computer	√	√	
Externally powered	connector	√	√
Real-time clock		√	√
Input ports	4+2	8	8
Buttons	option	up/down	up/down/A
Sample sources and DLL access	√	√	√
OEM version for large quantities	√	√	√
Electronic card size (mm)	83x48mm	83x68mm	83x68mm
Weight with/without box (g)	29/93g	41/105g	55/119g



Example of control panel using the external I/O ports

Starting scenes can then be carried out in sequential access by using «previous» and «next» on the box or via the external "I/O ports" connector which triggers off up to 255 scenes in direct access. Our new generation of DMX interface has many improvements: a new look with injected box, 5 colors available, colorized 3D logo, 3-pin or 5-pin XLR, extended stand alone memory, internal connector, easy assembly with external cable. Due to its very competitive price and its remarkable performances and mini-size, our product ideally qualifies in all types of small or large-scale settings.



IP version

EDDY Awards
lighting product of the year



www.nicolaudie.com

Europe Tel +33 (0) 467 661 041 info@nicolaudie.com
 Asia Tel +86 20 8364 1823 info@nicolaudieasia.com
 America Tel +1 786 543 7225 info@nicolaudieamerica.com