



RRSL3242

CASE FOR BEHRINGER
3242 MIXER

PICTURE COMING SOON!

Rugged Road Ready Features

- * Beefy, Stackable Ball Corners
- * Double Anchor Industrial Rivets
- * Recessed, Industrial Grade Latches
- * Recessed Industrial Grade Handle
- * Industrial Grade Rubber Feet
- * Premium 3/8" Vinyl Laminated Plywood
- * Tongue and Groove Locking Fit
- * Low Profile Base
- * ATA 300 Rating
- * Road Ready Limited Lifetime Warranty

Product Dimensions

Shipping Dimensions (inch): 38.5 x 22.6 x 9.8

Shipping Weight (lbs): 40.7

Product Dimensions (inch): 38 x 22 x 8.9

Product Weight (lbs): 38.5

Shipping Dimensions(cm):98 x 57.5 x 25

Shipping Weight (kg): 18.5

Product Dimensions (cm): 96.7 x 56.1 x 22.8

Product Weight (kg):17.5

Created for the Pro's, the RRSL3242 mixer case is made for the journey and built to hold strong in high stress situations. Designed to fit the Behringer SL 3242 mixer, the RRSL3242 features a heavy-duty, removable, latchable cover for easy access to your gear and our unique low profile base design that allows you to access your mixer's rear connection panel without removing your mixer from the case. Tougher than the pavement! That's the idea.

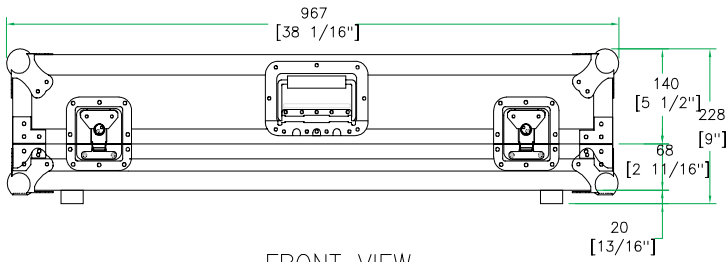
Road Ready Cases

1226 Corral Place * Santa Fe Springs, CA 90670

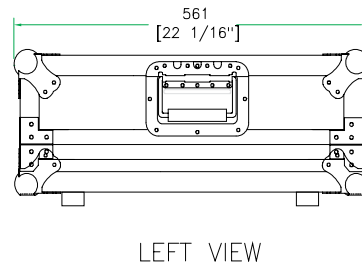
ph: 562.906.6185 * fax: 562.906.6186

WWW.ROADREADYCASES.COM

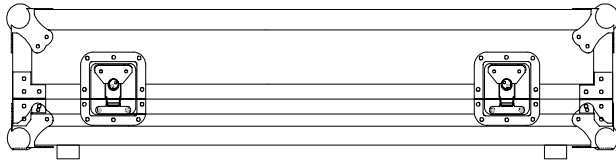
RRSL3242



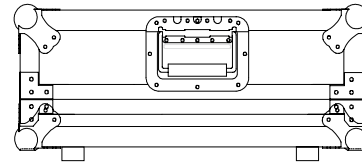
FRONT VIEW



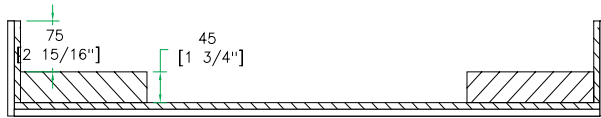
LEFT VIEW



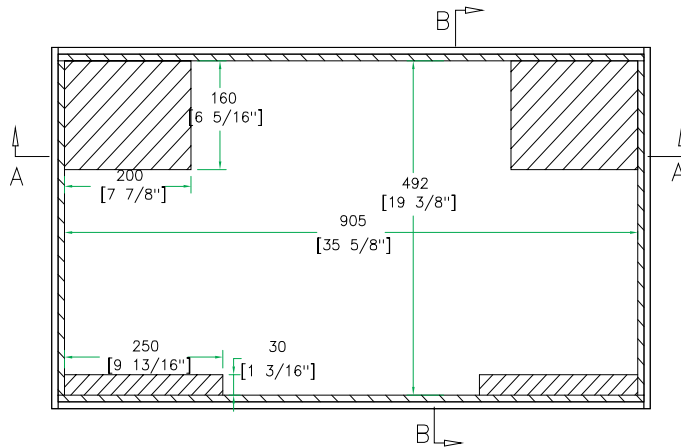
BACK VIEW



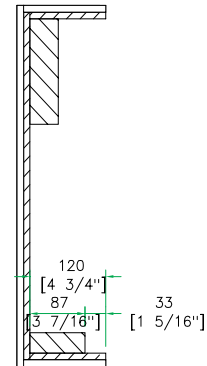
RIGHT VIEW



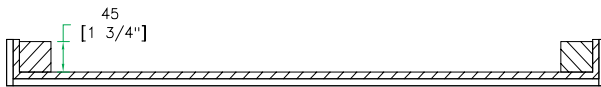
A-A VIEW



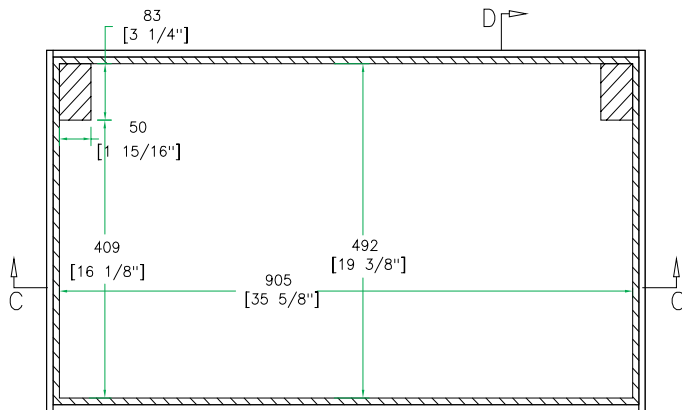
TOP VIEW OF COVER



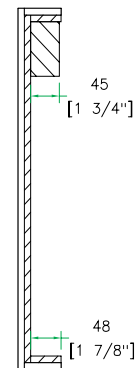
B-B VIEW



C-C VIEW



TOP VIEW OF BASE



D-D VIEW