



Rugged Road Ready Features

- * Beefy, Stackable Ball Corners
- * Double Anchor Industrial Rivets
- * Recessed, Industrial Grade Latches
- * Recessed, Industrial Grade Handle
- * Industrial Grade Rubber Feet
- * Premium 3/8" Vinyl Laminated Plywood
- * Tongue and Groove Locking Fit
- * Velvet Interior
- * ATA 300 Rating
- * Road Ready Limited Lifetime Warranty

Product Dimensions

Shipping Dimensions (inch): 39.7 x 17.5 x 7.4

Shipping Weight (lbs): 24.8

Product Dimensions (inch): 43.1 x 16.8 x 6.6

Product Weight (lbs): 21.6

Shipping Dimensions (cm): 101 x 44.5 x 19

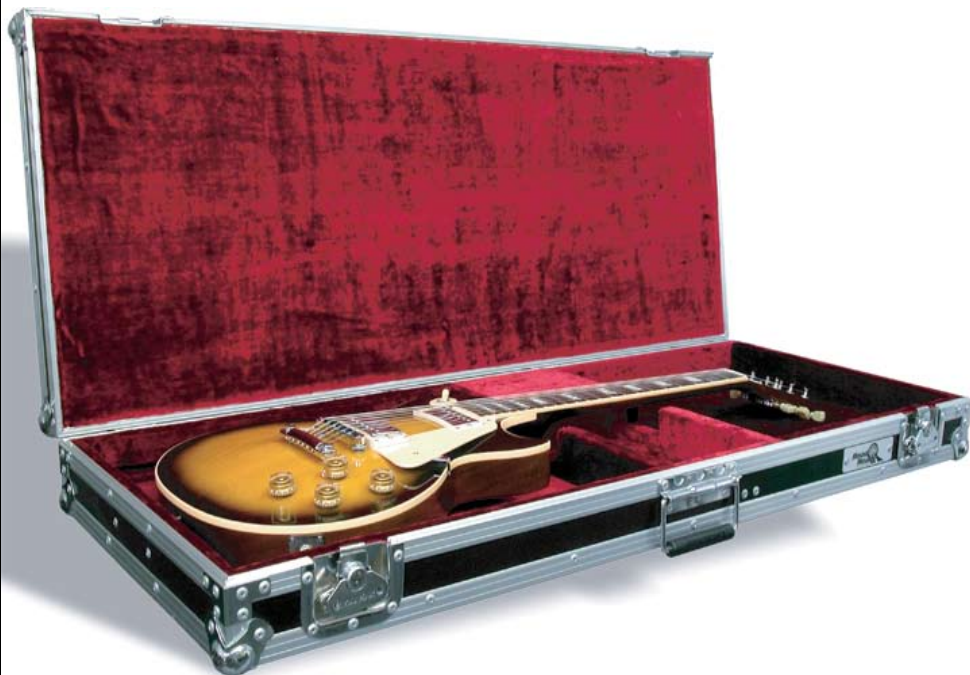
Shipping Weight (kg): 11.3

Product Dimensions (cm): 109.5 x 42.7 x 17

Product Weight (kg): 9.8

RRGTR

Universal Electric Guitar Case



AAHH, Guitars the pine of our existence; to be cared for gingerly and tenderly. We understand your relationship with your guitar and your matronly instinct to protect it. That's why we created the RRGTR; the ultimate in guitar protection. Beefy, ATA style construction with swanky adjustable velvet lining to cradle your electric guitar in the perfect lap of luxury. We even threw in a handy compartment for all your accessories. Don't worry we've got you covered.

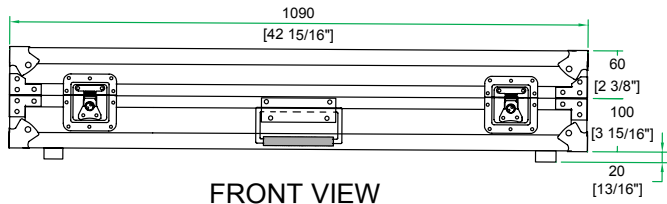
Road Ready Cases

1226 Corral Place * Santa Fe Springs, CA 90670

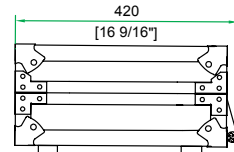
ph: 562.906.6185 * fax: 562.906.6186

WWW.ROADREADYCASES.COM

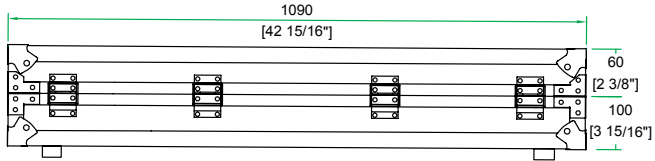
RRGTR



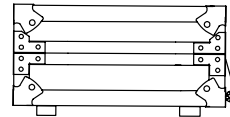
FRONT VIEW



LEFT VIEW



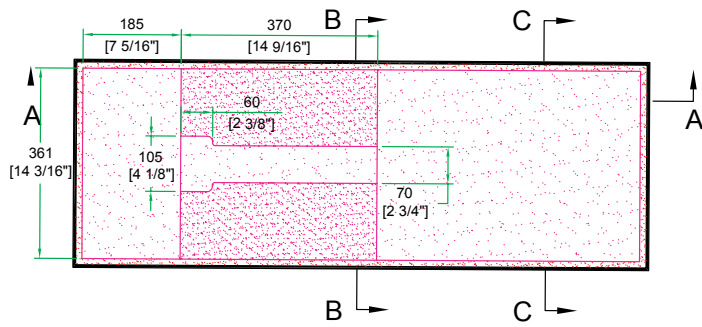
BACK VIEW



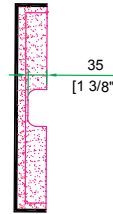
RIGHT VIEW



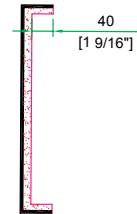
A-A VIEW



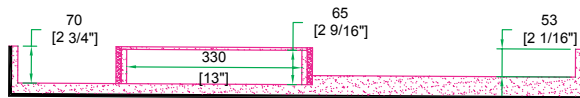
TOP VIEW OF COVER



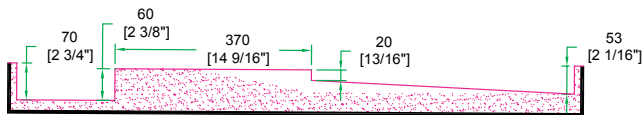
B-B VIEW



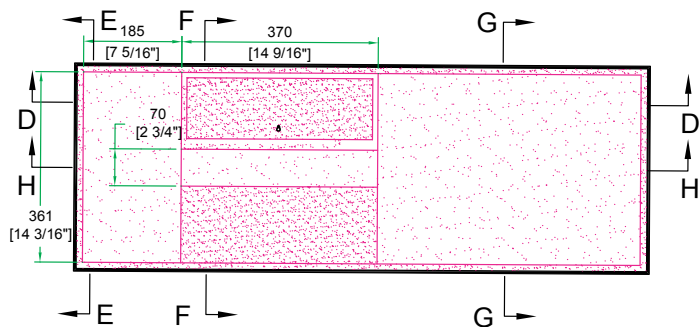
C-C VIEW



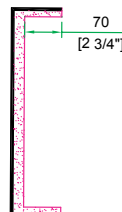
D-D VIEW



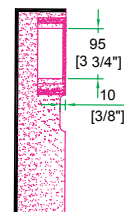
H-H VIEW



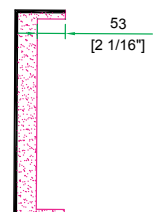
TOP VIEW OF BASE



E-E VIEW



F-F VIEW



G-G VIEW