



## Rugged Road Ready Features

- \* Beefy, Stackable Ball Corners
- \* Double Anchor Industrial Rivets
- \* Recessed, Industrial Grade Latches
- \* Recessed, Spring Loaded Handles
- \* Industrial Grade Rubber Feet
- \* Premium 3/8" Vinyl Laminated Plywood
- \* Tongue and Groove Locking Fit
- \* Low Profile Base
- \* Low Profile Wheels
- \* ATA 300 Rating
- \* Road Ready Limited Lifetime Warranty

## Product Dimensions

Shipping Dimensions ( inch): 35.6 x 28.5 x 9.1

Shipping Weight ( lbs): 77

Product Dimensions (inch): 35 x 27.9 x 9.1

Product Weight (lbs): 74.8

Shipping Dimensions( cm):90.5 x 72.5 x 23.2

Shipping Weight ( kg): 35

Product Dimensions (cm): 89 x 70.9 x 23.2

Product Weight (kg):34

# RRGL3300832W

Allen & Heath GL3300-832 32

Channel Mixer Case with Wheels

**PICTURE COMING SOON!**

Created for the Pro's, the RRGL3300832W mixer case is made for the journey and built to hold strong in high stress situations. Designed to fit the Allen & Heath GL3300-832 32 channel mixer, the RRGL3300832W features a heavy-duty, removable, cover crafted with our no-pressure design to protect the mixer controls and our unique low profile base that allows you to access your mixer's rear connection panel without removing your mixer from the case. And to make transporting your gear even easier we included our low profile wheels for sleek, stealth mobility. Tougher than the pavement! That's the idea.

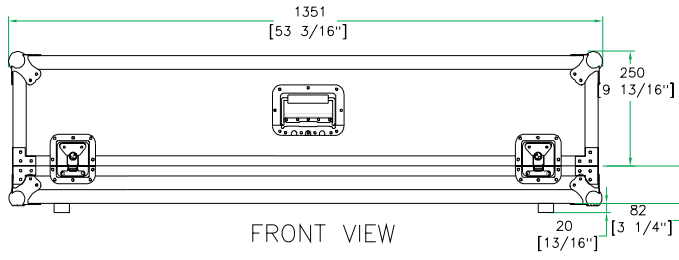
## Road Ready Cases

1226 Corral Place \* Santa Fe Springs, CA 90670

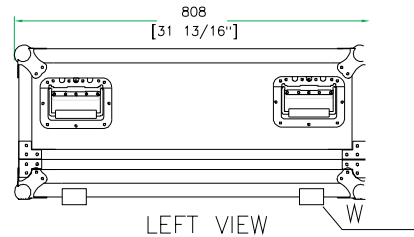
ph: 562.906.6185 \* fax: 562.906.6186

**WWW.ROADREADYCASES.COM**

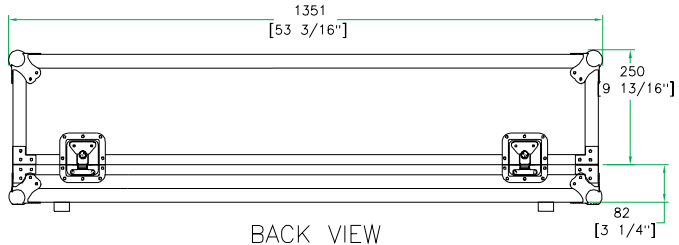
# RRGL3300832W



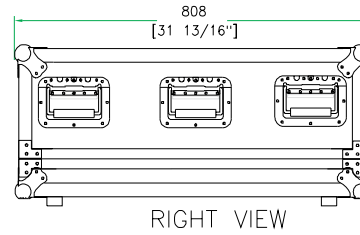
FRONT VIEW



LEFT VIEW



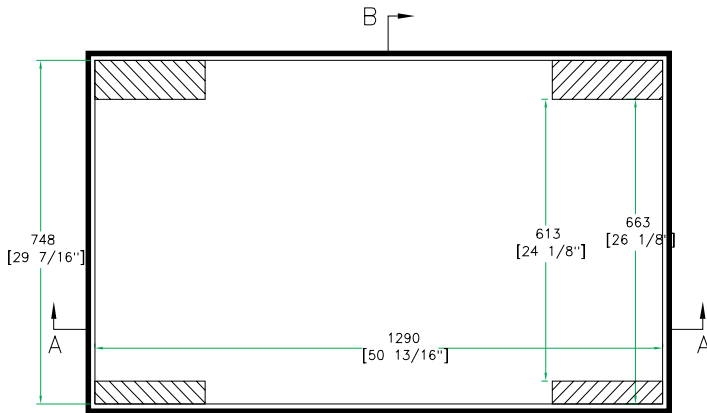
BACK VIEW



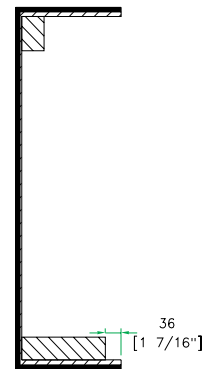
RIGHT VIEW



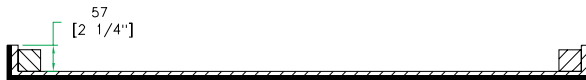
A-A VIEW



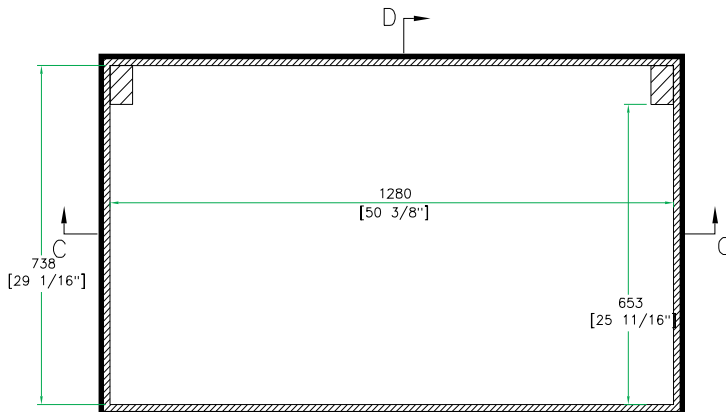
TOP VIEW OF COVER



B-B VIEW



C-C VIEW



TOP VIEW OF BASE



D-D VIEW