



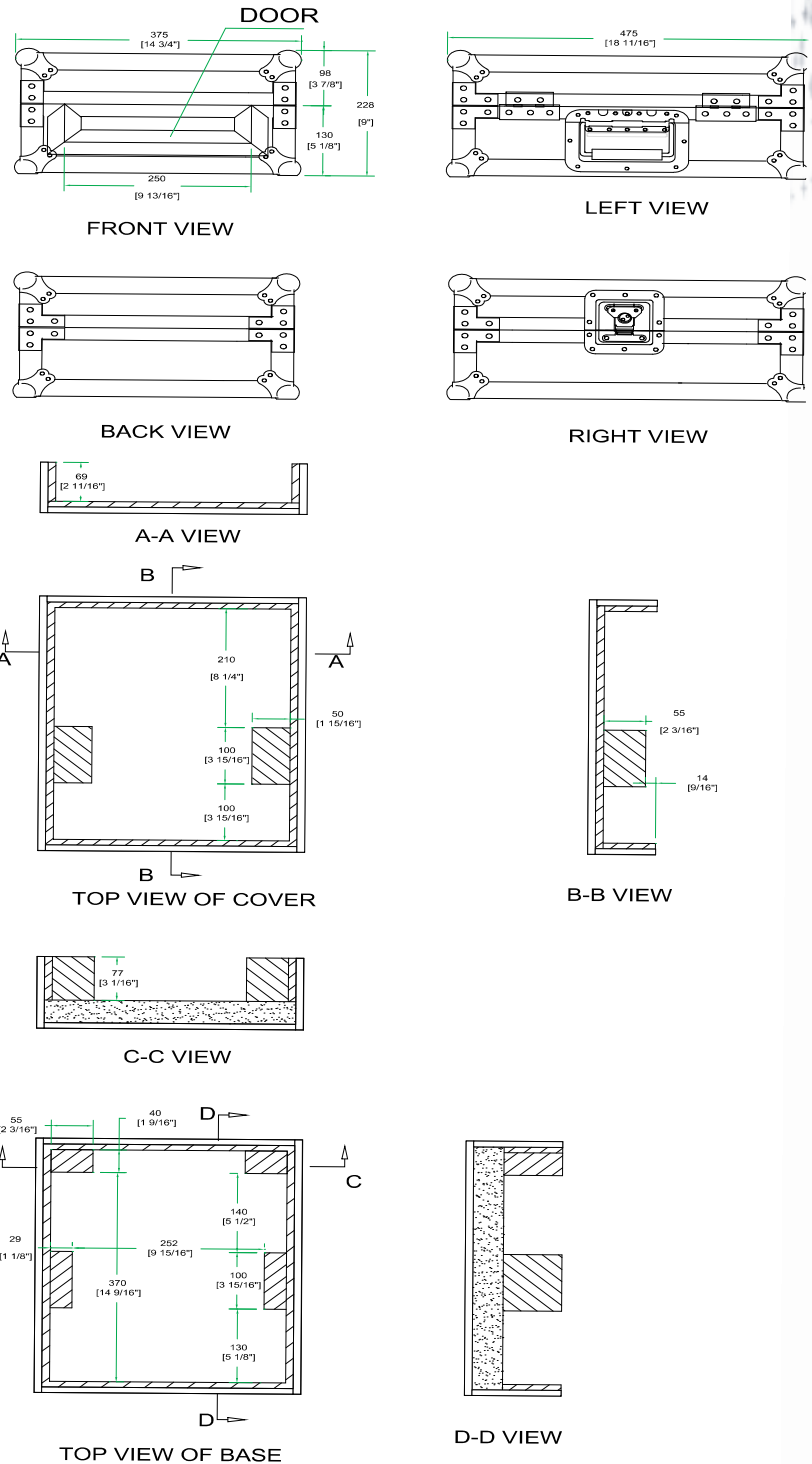
RRDJM909

Created for the Pro's, the RRDJM909 mixer case is made for the journey and built to hold strong in high stress situations. Designed to fit the Pioneer DJM909 Pro mixer, the RRDJM909 features a heavy-duty, removable cover crafted with our no-pressure design to protect your mixer controls. We also created the RRDJM909 with a front access door for easy access to controls. Tougher than the pavement! That's the idea.

Rugged Road Ready Features

- * Double Anchor Industrial Rivets
- * Beefy, Stackable Ball Corners
- * Recessed, Industrial Grade Latches
- * Spring Loaded Handle
- * Premium 3/8" Vinyl Laminated Plywood
- * Tongue and Groove Locking Fit
- * Front Access Door
- * Road Ready Limited Lifetime Warranty

Pioneer DJM909 Mixer Case



www.roadreadycases.com