



Rugged Road Ready Features

- * Beefy, Stackable Ball Corners
- * Double Anchor Industrial Rivets
- * Recessed, Industrial Grade Latches
- * Recessed Industrial Grade Handles
- * Industrial Grade Rubber Feet
- * Cool Tone Fan Technology
- * Premium 3/8" Vinyl Laminated Plywood
- * Tongue and Groove Locking Fit
- * Front Access Panels
- * Rear Access Cable Port
- * Low Profile Wheels
- * ATA 300 Rating
- * Road Ready Limited Lifetime Warranty

Product Dimensions

Shipping Dimensions (inch): 61.4 x 23.2 x 10.2

Shipping Weight (lbs):66

Product Dimensions (inch): 45 x 22.6 x 9.4

Product Weight (lbs): 61

Shipping Dimensions (cm): 156.0 x 59 x 26

Shipping Weight (kg):30

Product Dimensions (cm): 114.5 x 57.5 x 24

Product Weight (kg): 27.8

RRDJCDX10W

DJ COFFIN FOR 2 NUMARK CDX OR
HDX TURNTABLES, AND 10" MIXER
W/ LOW PROFILE WHEELS

PICTURE COMING SOON!

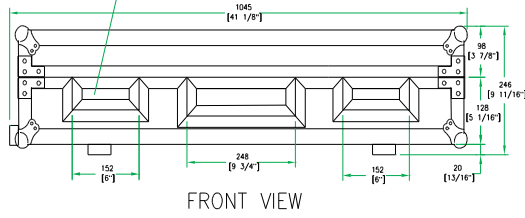
Definitive protection for your gear the RRDJCDX10W is a real heavy hitter. Built to take on the streets, the RRDJCDX10W is designed to hold two Numark CDX or HDX turntables and a 10" mixer. The RRDJCDX10W is built smart with Rugged Road Ready features like low profile wheels for sleek, stealth mobility, smart front access panels for easy access, and a rear cable port for hassle free connections. Go ahead give it a pounding

Road Ready Cases

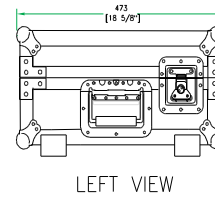
1226 Corral Place * Santa Fe Springs, CA 90670

ph: 562.906.6185 * fax: 562.906.6186

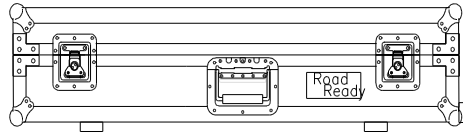
WWW.ROADREADYCASES.COM



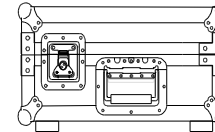
FRONT VIEW



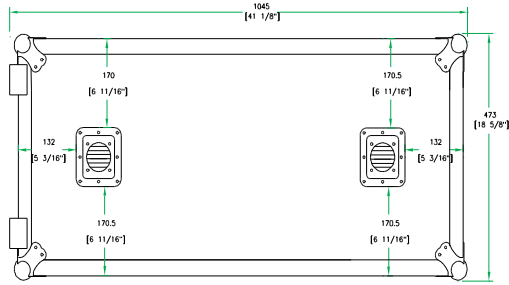
LEFT VIEW



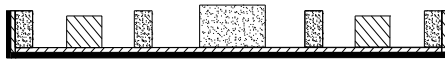
BACK VIEW



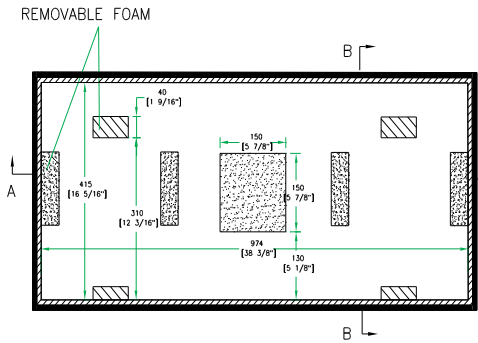
RIGHT VIEW



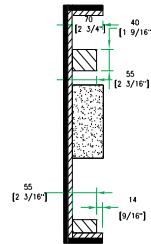
BOTTOM VIEW OF BASE



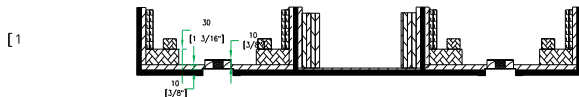
A-A VIEW



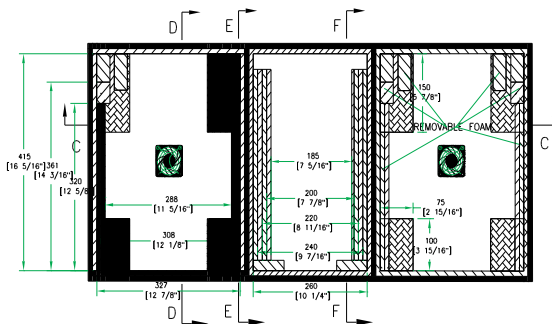
TOP VIEW OF COVER



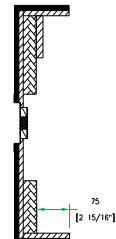
B-B VIEW



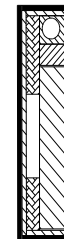
C-C VIEW



INSIDE VIEW OF BASE



D-D VIEW



E-E VIEW



F-F VIEW

REMOVABLE FOAM