



Rugged Road Ready Features

- * Beefy, Stackable Ball Corners
- * Double Anchor Industrial Rivets
- * Recessed, Industrial Grade Latches
- * Recessed, Spring Loaded Handles
- * Industrial Grade Rubber Feet
- * Premium 3/8" Vinyl Laminated Plywood
- * Tongue and Groove Locking Fit
- * Rugged Caster Kit
- * ATA 300 Rating
- * Road Ready Limited Lifetime Warranty

Fits the following models:

Coemar: Prospot 250 LX

Robe: Colorspot 250AT, Spot 250XT, Imagespot 250 AT, Mszoom 250XT, Wash 250XT

Martin: MAC 250 Crypton, MAC 250 Entour, MAC 300, MAC 250+, MAC 250

Product Dimensions

Shipping Dimensions (inch): 45.6 X 22.6 X 30.1

Shipping Weight (lbs): 81

Product Dimensions (inch): 39.3 X 21.7 X 29.3

Product Weight (lbs): 77

Shipping Dimensions (cm): 116 X 57.5 X 76.5

Shipping Weight (kg): 37

Product Dimensions (cm): 112.8 X 56 X 74.7

Product Weight (kg): 35

RR2MH250C

Universal Fit Case for 2 x 250 Type
Moving Heads in Hanging Position w/
Caster Board



Lights, Sound, Action! Designed to protect and transport two 250 Type moving heads, the RR2MH250C makes sure that the show will go on. Our unique hanging lock-in-place design securely holds your moving heads in place and provides the ultimate protection during transport. And to make transporting a breeze we included a rugged caster kit for easy mobility. Let there be light!.

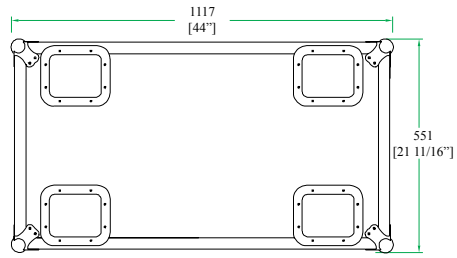
Road Ready Cases

1226 Corral Place * Santa Fe Springs, CA 90670

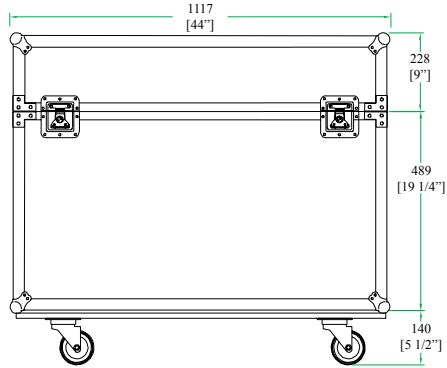
ph: 562.906.6185 * fax: 562.906.6186

WWW.ROADREADYCASES.COM

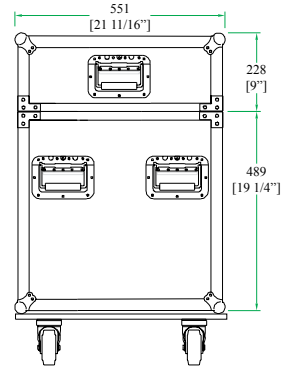
RR2MH250C



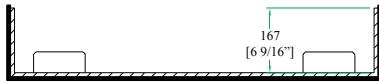
TOP VIEW



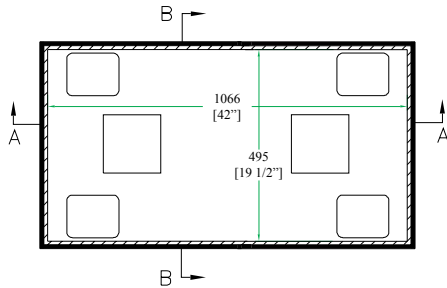
FRONT VIEW
BACK VIEW



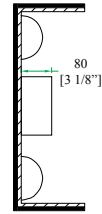
LEFT VIEW
RIGHT VIEW



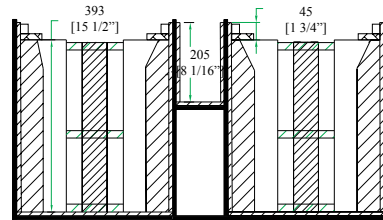
A-A VIEW



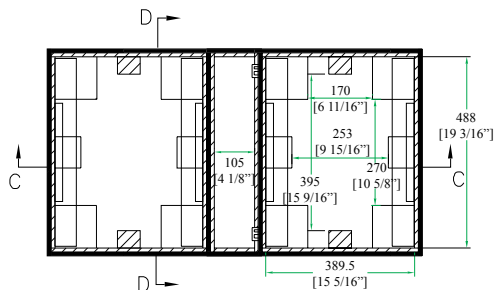
TOP VIEW OF COVER



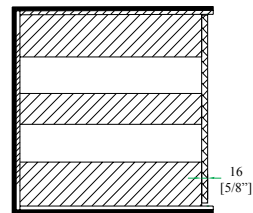
B-B VIEW



C-C VIEW



TOP VIEW OF BASE



D-D VIEW