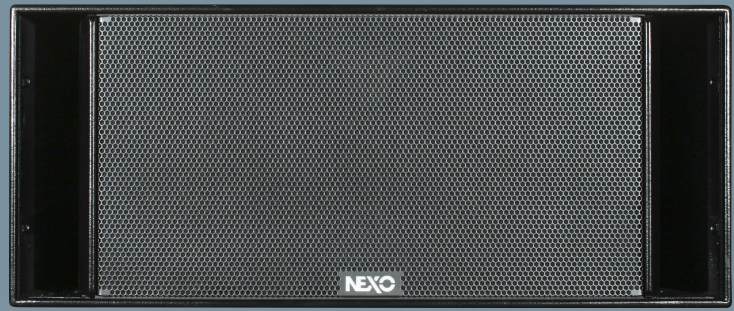
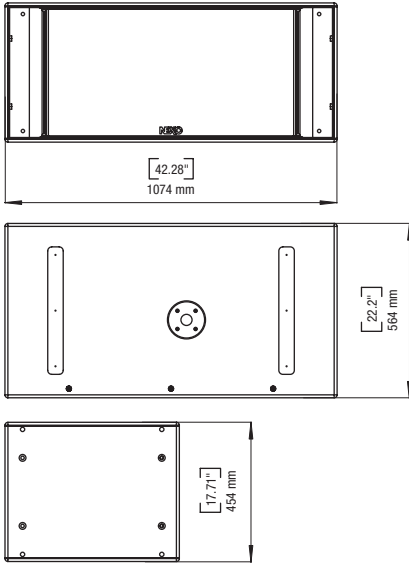


RS15



RS15 SubBass

RS15 Advantages

- Low Profile, High Output, Modular Scalable Bass
- Configurable directivity pattern
- Cardioid Pattern Reduces Rear Levels by Minimizing Rear/Side Wall Reflections
- Aerodynamic Profiled Vents with 20db Noise Reduction and improved Linearity at high SPL
- Applies across entire NEXO Product Line

Ray Sub Technology

The RS15 is the first offering of NEXO's patent pending RAY SUB Technology. The RAY SUB Technology is based on optimizing positioning and phase relationships of radiating surfaces in vented enclosures, permitting acoustic distance from rear to front sections to always increase as frequency decreases; consequently rear and front sections sum up efficiently over the entire subwoofer bandwidth, allowing for an average of 5 db gain from the rear section in the forward direction and cancelling in the rear direction.

Utilized in a stand alone format, RAY SUB Technology, allows the same cabinet to be configured for any polar pattern, omni-directional as a standard direct radiating subwoofer when speakers are facing the audience, or highly directional when a speaker cabinet is rotated sideways or upwards.

With arrays, RAY SUB subwoofers can be set back to back, front to front, alternate, in vertical columns, and when column length is sufficient be beam-steered upwards or downwards.

RS15

Comprised of a 15 inch transducer with a frequency response of 35Hz – 200Hz in omni or 35Hz- 150Hz in directional mode and a sensitivity of 105db SPL, the RS 15 presents an unchallenged versatility for installations and touring requirements.

DSP Processing & Control

Digital processing for the RS15 is provided either by NEXO's NX242 or NXAMP Powered TDcontrollers. The processing permits the RS15 to display precise directional pattern controls through DSP processed correlations of acoustic distances between transducer and vent sources.

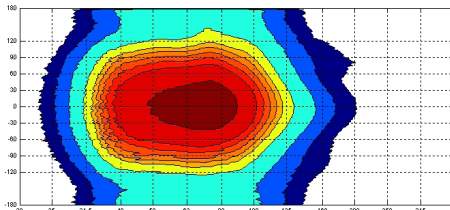
Analogue Processing

Analogue processing is provided by the S12 TDcontroller. The controller yields a traditional, omni-directional LF and VLF pattern and performance.

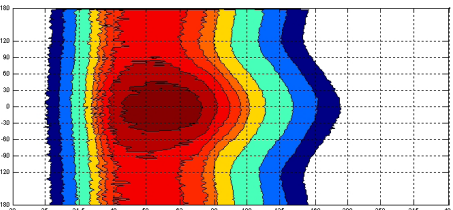
Accessories

- Bumper
- Dolly
- Rear Wheel Board
- Rigging Plates

Directional mode



Omni-directional mode



RS15

NEXO is one of the world's leading sound reinforcement loudspeaker manufacturers. Founded in 1979, the company is dedicated to crafting practical solutions with solid engineering. Each new design begins with a proprietary sophisticated computer simulation process that allows every parameter to be extensively modeled and simulated, leading to breakthrough cost and performance gains. NEXO's comprehensive product line includes loudspeakers, analogue and digital control electronics and amplification; all designed to deliver consistent sound quality and long term reliability for a broad range of applications.

NEXO S.A.
Parc d'Activité
du Pré de la Dame Jeanne
B.P. 5
60128 PLAILLY
Tel: +33 (0) 3 44 99 00 70
Fax: +33 (0) 3 44 99 00 30
e-mail: info@nexo.fr

NEXO LatAM
C.C. No 33. Suc 49
Caballito (1449)
Buenos Aires
Argentina
Tel: +54 114 432 1911
Fax: +54 114 431 1007
e-mail: info@nexo.fr

NEXO Asia
GPO Box 806
Hong Kong
SAR China
Tel: +852 9096 3472
Fax: +852 2104 3214
e-mail: info@nexo.fr

RS15 PRODUCT FEATURES

Components	2 x 15" (38cm) long excursion neodymium 8Ω drivers
Height x Width x Depth	454 x 564 x 1074mm (17.9" x 22.2" x 42.3") without accessories
Shape	Rectangular
Weight	Net Weight without accessories 52Kg (115 lbs)
Connectors	2 x NL4MP SPEAKON 4 pole (In & Through)
Construction	Baltic birch ply finish with structured black coating. Dark grey carpet finish also available.

RS15 WITH NX242-ES4 TDCONTROLLER OR NXAMP SYSTEM SPECIFICATION

	Omni	Directional
Frequency Response @ -3db [a]	35Hz - 100Hz	35Hz - 100 Hz
Usable Range @ -6db [a]	35Hz - 250Hz	35-Hz - 150Hz
Sensitivity 1W @ 1m [b]	105dB SPL Nominal	103dB SPL Nominal
Peak SPL @ 1m [b]	136 – 139dB Peak (2x700W to 2 x 1200W/8Ω)	133 – 136dB Peak (2x700W to 2 x 1200W/8Ω)
Dispersion	Omni & Directional pattern over the entire useable bandwidth depending on the NX242 or NXAMP TDCONTROLLERS setup. (two channels of the NX242ES4 or NXAMP are required to process directional setups)	
Directivity Index [c]	1.5<Q<2 1.7dB<DI<3dB	Q=4.3 DI=5.3dB
Crossover Frequency: NX242 or NXAMP TDCONTROLLERS preset dependent	From 80Hz to 200Hz	From 80Hz to 125Hz
Nominal Impedance	2 x 8Ω	2 x 8Ω
Recommended Amplifiers	1 amplifier channel is required for omni mode operation, rated at 1400 to 2400 Watts into 4Ω	2 amplifier channels are required for directional mode operation, each rated at 700 to 1200 Watts into 8Ω per channel

SYSTEM OPERATION

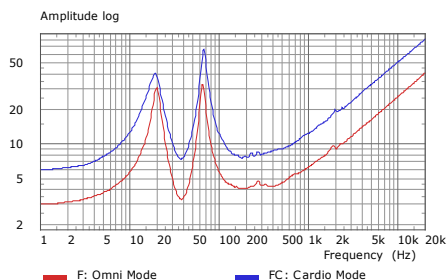
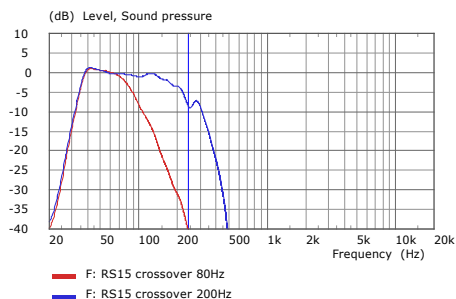
Electronic Controller	GEOS12 Analogue TDCONTROLLER, NX242ES4 Digital TDCONTROLLER & NXAMP Powered Digital TDCONTROLLER presets are precisely matched to RS15 and include sophisticated protection systems. Using RS15 without a properly connected NEXO TDCONTROLLER will result in poor sound quality and can damage components.
Speaker Cables	1-/1+ = Right or Rear 2-/2+ = Left or Front RS15 must use separate cables to the main system
Accessories	Bumper – Flying Plates – Handles - Dolly- Wheels – Push Pins
Rigging System [d]	Please refer to the user manual before any operation.

SHIPPING & ORDERING

Packaging	RS15s are packaged individually. Order as RS15 -C (finished in grey carpeting) or RS15 -P (finished in black structured coating)
-----------	--

As part of a policy of continual improvement, NEXO reserves the right to change specifications without notice.

[a] Response curves and data: anechoic far field above 400 Hz, half-space anechoic below 400 Hz. Usable range data: frequency response capability with TD crossover slopes removed. [b] Sensitivity & peak SPL: will depend on spectral distribution. Measured with band limited pink noise. Refers to the specified +/- 3 dB range. Data are for speaker + processor + recommended amplifier combinations. [c] Directivity curves and data: 1/3 octave smoothed frequency response, normalized to on-axis response. Data obtained by computer processing of off-axis response curves. [d] Please refer to the user manual.



NEXO

LIMITED WARRANTY

NEXO loudspeakers and electronics are covered against defects in workmanship or materials for a period of two (2) years from the original date of purchase. At the option of NEXO the defective item will be repaired/replaced with no charge for materials/labour. The item is to be adequately packaged and dispatched, pre-paid, to a NEXO authorised distributor/service centre. Unauthorised repair shall void the warranty. The NEXO warranty does not cover cosmetics or finish and does not apply to any items which in NEXO's opinion have failed due to used abuse, accidents, modifications or any type of misuse. All images and text herein are the property of NEXO SA, and deemed accurate, although specifications are subject to change without notice.