

MAG:CFX[®]

PRODUCT CATALOG



2009



MAG:CFX®

MAGIC FX is a Dutch manufacturer of professional special effects machines and equipment. A special effects specialist since its creation in 1995. All products are made under the brand MAGICFX® which has a strong reputation for quality. Our products are designed and produced in accordance with European quality standards. From idea till finished product, through the design, prototyping and production, MAGIC FX controls the complete production process in its own factory based in Holland.

Besides MAGIC FX is Europe's largest supplier of high quality confetti products and streamers. Because of our major stock level we are able to deliver any quantity for low prices directly from stock.

MAGICFX® serves special effects professionals all over the world and supplies products directly or through its sales network of distributors located in 58 countries.

In this catalog you will find our complete product range including some innovative new special effects.

OUR MISSION: ...TAKING SPECIAL EFFECTS TO THE NEXT LEVEL!





NEW!

POWER SHOT

03



NEW!

STAGE FLAME

10



NEW!

STADIUM SHOT

04



NEW!

POWER DROP

11



HANDHELD SHOT

05



STAGE BLOWER

12



MINI BLOWER

05



STAGE FAN

12



NEW!

SWIRL FANS

06



SKY TUBE FAN

12



SUPER BLASTERS

07



NEW!

CONTROL GEAR

13



CO2 JET

08



NEW!

WIRELESS / DMX CONTROLLERS

14



CO2 GUN

09



CONFETTI / STREAMERS

15



BUBBLE MONSTER

09



HANDHELD / ELECTRIC CANNONS

17



PRODUCT INFO

The new Power Shots are the most easy and professional confetti and streamer shot units available. The Power Shots can be placed on stages or mounted in trusses. The Power Shots are designed to fire prefilled single use electric cannons. Electric cannons are easy to replace, safe time and are available in many types at low prices. The Power Shots require electronic input from a 230V power source. This allows the user to fire cannons easily by a 230V power switch, by remote control, or by DMX. Imagine all the possibilities...

Product code :	MFX0301
Voltage :	230VAC / 50HZ
Power :	100W
Output :	40cm confetti cannons : 5m
	80cm confetti cannons : 12m
	40cm streamer cannons : 12m
	80cm streamer cannons : 20m



EFFECTS



ACCESSORIES



Electric confetti cannons

Electric streamer cannons

MFX0302 : Cannon clamp

MFX0303 : Base plate

MFX3101 : Truss clamp 50mm

NEW!

PRODUCT INFO

The new Stadium Shots are the most powerful confetti / streamer shot cannons available! The stadium shots give an enormous and spectacular burst of confetti or streamers up to 50m! They provide their "shot" via a compressed air accumulator tank which can be pressurized up to 8 bar! The Stadium Shots can be fired by 230V.

Product code	: MFX0401
Voltage	: 230VAC / 50HZ
Power	: 100W
Size	: closed roadcase 80cm x 60cm x 75cm
Weight	: 70kgs
Tank	: 33L / 8 bar (PED certified)
Output	: confetti : 25m
	: streamer 10m : 35m
	: stadium streamers 20m : 50m!



EFFECTS



ACCESSORIES



MFX0405 : Air Compressor 8 bar



MFX0406 : Flexible air hose



MFX0402 : Carton lifting cores



MFX0403 : Carton compression caps



MFX3101 : Compression caps tape



PRODUCT INFO

Handheld Shots are professional handheld confetti cannons. The Handheld Shots are provided with a handheld firing mechanism. Easily fill the pipe with slowfall confetti and / or streamers, screw in a CO2 cartridge and pull the rope. Easy to operate, great effect!

Product code	: MFX0101 Handheld Shot 40cm
	: MFX0102 Handheld Shot 80cm
Size	: 40cm Ø3cm / 80cm Ø3cm
Weight	: 200g / 350g
Power	: manual
Consumption	: 1 filling confetti and/or streamers
	: 1 CO2 cartridge
Output	: confetti : 5-6m
	: streamers 5m : 8m
	: streamers 10m : 15m

ACCESSORIES



MFX0104 : Carton compression caps



MFX0105 : Compression caps tape



MFX0216 : CO2 cartridges 16g



MINI BLOWER



PRODUCT INFO

The Mini Blower is a compact confetti machine. With its' specially designed inside flexible hose and special wand attachments, it can vacuum and shoot out confetti continuously, to approximately 5-7m.

Product code	: MFX0501
Voltage	: 230VAC / 50HZ
Power	: 1150W
Size	: 48cm x 22cm x 24cm
Weight	: 13kgs
Consumption	: 1kg confetti p/m
Output	: 5-7m

ACCESSORIES



MFX0502 - Roadcase for Mini Blower



PRODUCT INFO

The new MAGICFX® Swirl Fans are designed to create a silent rain of confetti. The Swirl Fans can be easily controlled by connecting them to a dimmer or a dimmer pack and using a dmx controller. Because of its low noise fan, the machine is perfect for theatres, television and fashion shows.

MFX0701	: Swirl Fan	MFX0702	: Swirl Fan XL
Voltage	: 230VAC / 50HZ	Voltage	: 230VAC / 50HZ
Power	: 240W	Power	: 460W
Size	: Ø50cm	Size	: Ø63cm
Height	: 37.5cm	Height	: 46.5cm
Weight	: 14kgs	Weight	: 17.5kgs
Capacity	: 1-2kgs confetti	Capacity	: 3-4kgs confetti
Output	: Ø4m (from 1m high)	Output	: Ø5m (from 1m high)
Duration	: up to 2 minutes	Duration	: up to 8 minutes



NEW!

ACCESSORIES



MFX0704 : Roadcase for Swirl Fan XL



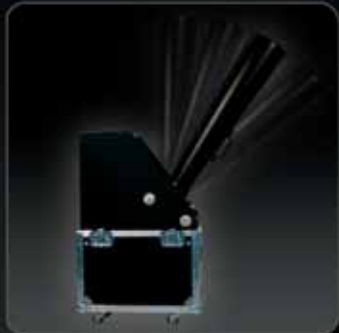
MFX0703 : Roadcase for Swirl Fan

EFFECTS





DETAILS



PRODUCT INFO

MAGICFX® Super Blasters, the world's most powerful confetti blasters, are famous from many large events and sports games. The Super Blasters are available in two sizes; The Super Blaster and the Super Blaster XL!

The Super Blaster can be used in medium size venues like clubs, discotheques and stages.

The Super Blaster XL is designed for large venues like arenas, stadiums and large outdoor events!

CO2 tanks must be purchased or rented separately.

EFFECTS



PRODUCT INFO

MFX0801 : Super Blaster
 Power : manual
 Size : 52cm x 27cm x 99cm
 (closed road case)
 Weight : 30kgs
 Consumption : CO2 gas (liquid)
 Capacity : 3-5kgs confetti p/m
 Output : 15m

MFX0802 : Super Blaster XL
 Power : manual
 Size : 66cm x 38cm x 135cm
 (closed road case)
 Weight : 51kgs
 Consumption : CO2 gas (liquid)
 Capacity : 10-15kgs confetti p/m
 Output : 25m



PRODUCT INFO

The famous MAGICFX® CO2 Jets create cryogenic fog plumes of approx. 8m. high. The effect is very reliable and repeatable because of it's high quality custom made valve. The CO2 Jets can be mounted in trusses or placed on stages. The CO2 Jets must be used with liquid CO2 tanks. When the CO2 comes out of the Jets there will be a loud sizzling sound which make the effect even more spectacular! Tanks can be purchased or rented separately. The new CO2 Jets are equipped with a 230V IEC in-out connector to control them separately or link them together in one line. Controllable by DMX if connected to a DMX switch pack.

MFX1101	: CO2 Jet
Voltage	: 230VAC / 50HZ
Power	: 20W
Size	: ground plate 20cm x 12.3cm enclosure 13cm x 8cm x 13cm pipe 20.5cm Ø5cm
Weight	: 2.6kgs
Consumption	: CO2 gas (liquid with a dip pipe)
Output	: approx. 8m (depending on the hummidity)



EFFECTS



ACCESSORIES



MFX1106 - CO2 flexible high pressure hose



MFX3101 - Truss clamp Ø50mm



MFX0305 - IEC male to female link cable



PRODUCT INFO

The CO2 Gun is a handheld gun which can blast white cryogenic fog plumes. The CO2 Gun is an innovative and spectacular eye catcher for DJ's and dancers!
The CO2 Gun must be connected to a CO2 tank (liquid CO2) by using a flexible high pressure CO2 hose.

- MFX1102 : CO2 Gun
- Power : manual
- Size : 57cm x 21cm
pipe 22cm Ø5cm
- Weight : 1.5kgs
- Consumption : CO2 (liquid with a dip pipe)
- Output : approx. 8m (depending on the humidity)



BUBBLE MONSTER



PRODUCT INFO

The MAGICFX® Bubble Monster is especially designed with large clubs, theatrical productions and major stages in mind. The machine projects enormous quantities of bubbles. The set of two large fans at the back of the unit spread the bubbles far and wide. The variable speed control allows the user great flexibility in the control of bubble output. The Bubble Monster's remote controller is equipped with a digital timer and allows for fan speed and bubble output control. The remote controller can also be separated from the machine and located up to a large distance by using standard XLR (5p) connector cable.

- MFX2001 : Bubble Monster
- Voltage : 230VAC / 50Hz
- Power : 100W
- Size : 72cm x 41cm x 41.5cm
- Weight : 9kgs
- Consumption : 5L Bubble Fluid p/h
- Output : approx. 10m

EFFECTS



ACCESSORIES



MFX2003 - Roadcase Bubble Monster

MFX3001 - Pro Bubble Fluid





NEW!

PRODUCT INFO

The new MAGICFX® Stage Flame is the most innovative, safe, professional and reliable flame system available. The Stage Flame allows the user to use aerosol cans or propane gas from a tank.

The Stage Flames are dmx controllable, designed for professional use and equipped with high quality European components for maximum safety. The on board dmx module uses two dmx addresses. One safety channel and one fire channel. The back side of the unit contains 2 red LED indicators which will light up to warn the artists on stage.

The MAGICFX® Stage Flame is equipped with a tilt sensor which shuts down the unit as soon as it is subject to a big shock or when it is tilted. Besides the Stage Flame has built-in flashback arrestors and an ionization sensor for maximum safety.

MFX1201	: Stage Flame
Voltage	: 230VAC / 50HZ
Power	: 100W
DMX 512	: 2 channels (3 pole XLR male, female)
Size	: 36cm x 31cm x 21cm
Weight	: 11.5kgs

EFFECTS



Aerosol cans



Propane gas

Little. The next big thing.

PRODUCT INFO

The new MAGICFX® Power Drop is the kabuki drop system of the future. Its a reliable and innovative 'plug and play' system to drop curtains, balloon nets or other things matching to your creativity from a truss or roof beam. Each Power Drop has a 230V IEC in-out connector to fire them separately or linked together in one line. As soon as the power is switched ON the system will drop. By using a switch pack controllable by DMX. A must have kabuki system for every show professional!

MFX1501	: Power Drop
Voltage	: 230VAC / 50HZ
Power	: 100W
Size	: 13.5cm x 7.6cm x 7.4cm
Weight	: 0.9kgs
Capacity	: 5kgs



MFX1504 - Power Drop Set Pro

NEW!

DETAILS



ACCESSORIES



MFX1506 - IEC male to female cable

MFX1502 - Curtain clamp

EFFECTS





PRODUCT INFO

The Stage Blower is a high power radial fan which can be used for spreading fog from a fog machine or as an extra power fan to enlarge the output for confetti, bubbles or snow effects.

The solid housing of the Stage Blower is made of long lasting synthetic material. The Stage Fans are equipped with a double wire-guard for high safety.

The Stage Blower has 3 different fan speeds.

MFX0701	: Stage Blower
Voltage	: 230VAC / 50HZ
Power	: 1000W
Size	: 51 x 49 x 45cm
Weight	: 18kgs

STAGE FANS



PRODUCT INFO

The Stage Fans are powerful and reliable fans especially designed to use for a low noise wind effect on stage. The Stage Fans are stackable and the solid housing is made of long lasting synthetic material.

The Stage Fans are equipped with a double wire-guard for high safety. Controllable by a dimmer. Different blowing directions possible.

MFX2501	: Stage Fan	MFX2502	: Stage Fan XL
Voltage	: 230VAC / 50HZ	Voltage	: 230VAC / 50HZ
Power	: 230W	Power	: 290W
Size	: Ø40cm	Size	: Ø50cm
Weight	: 12,5kgs	Weight	: 15kgs
Capacity	: 4500 M3 p/h	Capacity	: 7000 M3 p/h
Fan Speed	: 1400 RPM	Fan Speed	: 1400 RPM

SKY TUBE FAN



PRODUCT INFO

The Sky Tube Fan is a powerful and durable mobile fan for Sky Tubes and Sky Dancers. The solid housing is made of long lasting synthetic material. The durable motor is waterproof and has a low energy consumption. The Motor is equipped with an integrated thermal protection. The Sky Tube Fan is equipped with a double wire-guard for high safety.

The Sky Tube Fan can be used for Sky Tubes of 8m, 1 leg Sky Dancers of 6m and 2 leg Sky Dancers of 9m (2 Sky Tubes Fans required).

MFX2601	: Sky Tube Fan
Voltage	: 230VAC / 50HZ
Power	: 600W
Size	: Ø40cm
Weight	: 12,5kgs
Capacity	: 6000 M3 p/h
Fan Speed	: 2800 RPM



NEW!



PRODUCT INFO

The Effect'Ivator 1 is an easy 230V ON/OFF controller to control all machines which are activated by 230V.
The Effect'Ivator is equipped with a FIRE button for firing effects such as Power Shots, Stadium Shots, Power Drops and CO2 Jets.
Besides there's also a switch to control machines which require electronic input for a longer duration such as Stage Fans.

Product code : MFX3201
Size : 16cm x 11cm x 8cm
Weight : 1.5kgs
Power : 230VAC / 50Hz / 10Amp

EFFECT'IVATOR 4



NEW!



PRODUCT INFO

The Effect'Ivator 4 is the big brother of the Effect'Ivator 1.
The Effect'Ivator 4 is a 4 channel controller equipped with 4 FIRE buttons to cue effects and 4 switches to switch on effect machines, lights etc.

Product code : MFX3202
Size : 37.5cm x 16cm x 12cm
Weight : 2.8kgs
Power : 230VAC / 50Hz / 10Amp
(5Amp each channel)

FOOT SWITCH



NEW!

PRODUCT INFO

The Foot Switch (pedal) is an easy 230V ON/OFF controller which is ideal for bands when for example the drummer wants to control the effects with his foot.
The Foot Switch can be used as an extra security controller as well in combination with other control systems.

Product code : MFX3203
Size : 24cm x 15cm x 14cm
Weight : 1.6kgs
Power : 230VAC / 50Hz / 16Amp



NEW!



PRODUCT INFO

A reliable and secure 230V remote control system optimally engineered by MAGIC FX. The Effects Box has a built-in memorised learn decoder to program or link the different channels. Installation simply requires connections to power supply which saves a lot of time on site. The system has a unique identity of 65.536 code combinations (16 bit encryption) for maximum safety.

MFX3205 : Wireless Effects Box 4
 Voltage : 230VAC / 50HZ
 Freq (MHz) : 434.525

MFX3206 : Transmitter 4
 Range : up to 1000m. (open field)

MFX3207 : Transmitter 8
 Range : up to 1000m. (open field)

DMX CONTROLLERS



MFXEL01

MFXEL04

PRODUCT INFO

Operating special effects by dmX allows you endless possibilities to match your creativity. Programs can be run automatically or by external music input. Besides it is also possible to control your effects manual by using the faders and flash buttons.

MFXEL01 : Elatio 1 channel DMX dimm/switch pack

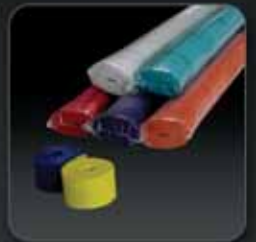
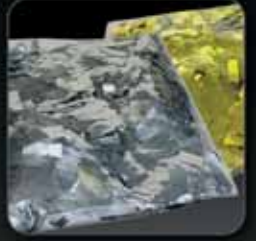
MFXEL04 : Elatio 4 channel DMX dimm/switch pack

MFXEL24 : Elatio 24 channel DMX controller



MFXEL24

EUROPE'S LARGEST SUPPLIER OF
CONFETTI PRODUCTS AND STREAMERS!



CONFETTI AND STREAMERS FOR SPECIAL EFFECTS PROFESSIONALS!
BEST QUALITY, FAST DELIVERY. ...LOW PRICES!

...10KGS ?
...100KGS ?
...1000KGS ?!





CON01 : rectangles 55x17mm



CON01 : rectangles 55x17mm



CON02 : rounds Ø55mm



CON02 : rounds Ø55mm



CON03 : stars Ø55mm



CON03 : stars Ø55mm



CON04 : hearts Ø55mm



CON05 : rose petals Ø55mm



CON06 : flowers Ø55mm



CON06 : flowers Ø55mm



CON07 : butterflies Ø55mm



CON07 : butterflies Ø55mm



CON20 : rectangles 55x17mm



CON20 : rectangles 55x17mm



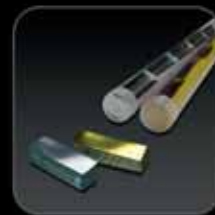
CON30 : snow 10x10mm



CON22 : twister



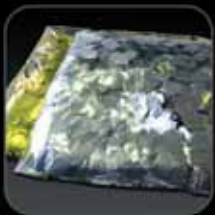
CON08 : twister 90x5mm



CON23 : rectangles 55x17mm



CON10 : rectangles 55x17mm



CON11 : squares 17x17mm



CON12 : raindrops 6x6mm



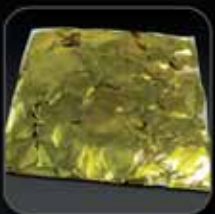
CON13 : rounds Ø55mm



CON14 : stars Ø55mm



CON15 : hearts Ø55mm



CON16 : flowers Ø55mm



CON17 : butterflies Ø55mm



STR01 : streamers 5m x 0,85cm



STR01 : streamers 5m x 0,85cm



STR02 : streamers 10m x 1,5cm



STR02 : streamers 10m x 1,5cm



STR03 : streamers 10m x 5cm



STR04 : streamers 20m x 5cm



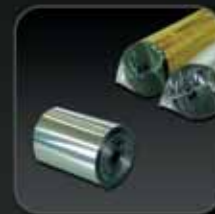
STR05 : streamers 5m x 0,85cm



STR06 : streamers 10m x 1,5cm



STR07 : streamers 10m x 5cm



STR08 : streamers 20m x 5cm

INFO

- All confetti products and streamers are directly available from stock in large quantities.
- Confetti products are available in many different shapes and colours.
- Low prices.
- Flameproof according to NEN-EN-ISO 6941.
- Best quality for special effects professionals.
- Fast delivery all over Europe.



PRODUCT INFO

Handheld cannons are single use cannons prefilled with confetti or streamers. The lowest part contains a pressurized nitrogen cartridge. Confetti and streamers are flameproof according to NEN-EN-ISO 6941. Easy to use, great effect and available at low prices.

Type	Output	Type	Output
- 28cm confetti	: 4m	- 28cm streamers	: 8m
- 50cm confetti	: 8m	- 80cm streamers	: 20m
- 80cm confetti	: 12m		



PRODUCT INFO

Electric cannons are single use cannons prefilled with confetti or streamers. Electric cannons can be fired by using Power Shots. The lowest part of the cannons contains a pressurized nitrogen cartridge for a powerful effect. Electric cannons save time and are available at a low price. Confetti and streamers are flameproof according to NEN-EN-ISO 6941.

Type	Output	Type	Output
- 40cm confetti	: 5m	- 40cm streamers	: 12m
- 80cm confetti	: 12m	- 80cm streamers	: 20m

HANDHELD CANNONS



HCC01 : 28cm multicolour



HCC02 : 28cm white+silver



HSC01 : 28cm multicolour



HSC02 : 28cm white+silver



HCC04 : 50cm multicolour



HCC05 : 50cm white+silver



HCC07 : 80cm multicolour



HCC07 : 80cm several colours



HCC08 : 80cm white+silver



HCC09 : 80cm silver or gold



HSC04 : 80cm multicolour



HSC04 : 80cm several colours



HSC05 : 80cm white+silver



HSC06 : 80cm silver or gold



HEC03 : 80cm EMPTY

ELECTRIC CANNONS



ECC01 : 40cm multicolour



ECC02 : 40cm white+silver



ECC03 : 40cm silver or gold



ESC01 : 40cm multicolour



ESC01 : 40cm several colours



ESC02 : 40cm silver or gold



EEC01 : 40cm EMPTY



ECC04 : 80cm multicolour



ECC04 : 80cm several colours



ECC05 : 80cm white+silver



ECC06 : 80cm silver or gold



ESC03 : 80cm multicolour



ESC03 : 80cm several colours



ESC04 : 80cm silver or gold



EEC02 : 80cm EMPTY

WWW.MAGICFX.EU

MAG:CFX[®]

Industrieweg 16
NL-5281 RW Boxtel
The Netherlands

T +31 (0)411 63 50 13
F +31 (0)411 63 50 12
E info@magicfx.eu

YOUR SUPPLIER

