



2010 CATALOG

Keyboard

Mobile Interfaces

Audio Controller

Processor

MIDI Interface

Monitor Speakers

Headphones

Microphones

Guitar Wireless

Accessories

**ICON Digital Receives
"Best in Show"
Honors at NAMM Show 2008**



ICON Digital was picked as one of the "Companies to Watch" in the popular "Best In Show" presentation at NAMM University's final 2008 breakfast session on Sunday, January 20th in Anaheim, CA. Six industry experts formed the panel of judges that shopped the NAMM Show for their favorite companies, products and services and then presented their top picks in five categories.

"Best in Show" judge Pete Gamber, owner of Alta Loma Music, selected ICON Digital from an all-time-record-breaking 1,560 exhibitors at the NAMM 2008 Show as his pick for a company to watch. His written comments about iCon Digital include "Cool wireless systems with a \$159 list. Keyboards with removable boards. A very cool, new company."

Commenting on the 2008 show in general, Gamber stated "The dealers I saw here were the ones who decided they were going to find a way to make their businesses work."

The ICON Inspire air series MIDI Keyboard includes 49-(Inspire 5air), 61-(Inspire 6air), 88-note (Inspire 8air and Inspire 8PSair) keyboard versions. Here are some of the main features:

Features:

- Inspire 5air: 49-keys semi-weighted piano style keyswitch with after touch
- Inspire 6air: 61-keys semi-weighted piano style keyswitch with after touch
- Inspire 8air: 88-keys semi-weighted piano style keyswitch with after touch
- Inspire 8PSair: 88-keys hammer action piano style keyswitch with After Touch
- Velocity sensitive semi-weighted action piano style keys with assignable "After touch" (except for InSpire 8PSair)
- X/Y touch pad
- Combined pitch/modulation joystick
- 8 fully programmable trigger pads
- 9 fully programmable faders
- 8 fully programmable knobs
- Multiple velocity curves available for selection
- LCD display, backlit for easy control
- Jog wheel shuttle for fast search and control
- 22 MIDI function buttons including 6 assignable transport buttons
- 20 non-volatile memory locations
- Mackie Control protocol build-in
- MIDI I/O, Sustain and Expression connectors
- "AirMIDI" Wireless MIDI module build-in
- Expansion slot for ICON's "Synth" series Synthesizer expansion card
- Expansion slot for ICON's "Satellite" series USB audio expansion card
- USB2.0 and USB bus-powered

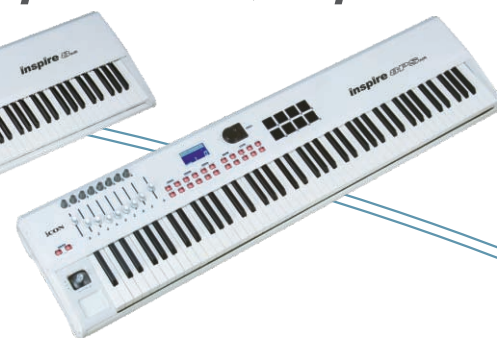
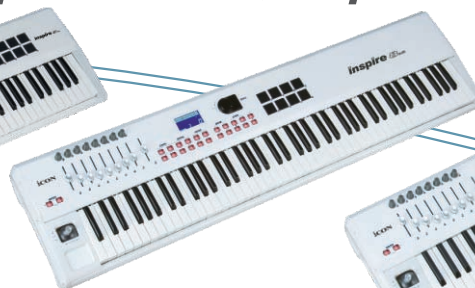


➤ **inspire 5AIR**

➤ **inspire 6AIR**

➤ **inspire 8AIR**

➤ **inspire 8PSAIR**



samplitude[®]
11 silver

The ICON logicon air series MIDI Keyboard includes 49-(logicon 5air),61-(logicon 6air),88-note (logicon 8air)keyboard versions. Here are some of the main features:



Features:

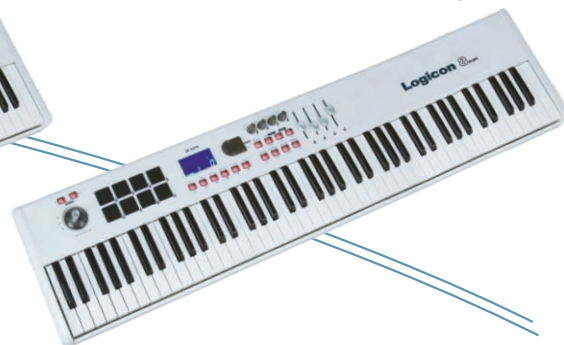
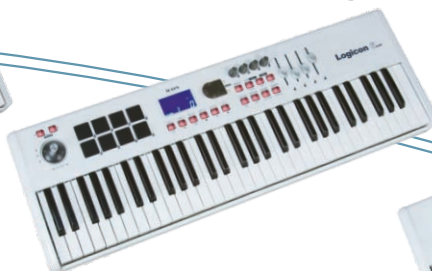
- Logicon 5air: 49-keys semi-weighted piano style keyswitch with after touch
- Logicon 6air: 61-keys semi-weighted piano style keyswitch with after touch
- Logicon 8air: 88-keys semi-weighted piano style keyswitch with after touch
- 8 integrated assignable trigger pads with 4 layers shift
- 4 assignable faders with 4 layers shift
- 4 variable data encoders with 4 layers shift for setting MIDI CC
- Combined pitch/modulation joystick
- Multi velocity curves available for selection including keyswitch and trigger pad
- Large LCD display with backlight
- Jog wheel shuttle for fast search and control
- 14 midi function buttons including 6 assignable transport buttons
- 20 non-volatile memory locations
- 1 x 1 midi I/O
- Expression & sustain pedal TRS connectors
- "AirMidi™" wireless midi module build-in
- 2 x expansion slots for ICON "Synth™" series synthesizer expansion cards
- 1 x expansion slot for ICON "Satellite™" series audio interface expansion card
- Compatible with Windows and Mac OS
- USB2.0 High Speed and USB bus-powered



➤ **Logicon 5_{AIR}**

➤ **Logicon 6_{AIR}**

➤ **Logicon 8_{AIR}**



samplitude[®]
11 silver

NEURON

Keyboard

The ICON Neuron series MIDI Keyboard includes 25-(Neuron 3), 49-(Neuron 5), 61-note (Neuron 6), keyboard versions. Here are some of the main features:

Features:

- Neuron 3: 25 velocity-sensitivity piano style keyboard
- Neuron 5: 49 velocity-sensitivity piano style keyboard
- Neuron 6: 61 velocity-sensitivity piano style keyboard
- Combined assignable pitch/modulation joystick
- 4 assignable knobs with 2 layers (8 Knobs in total)
- 1 assignable fader
- 3-segment LED display
- Octave up/down; transpose up/down
- Multi velocity curves available for selection
- 14 midi function buttons including 6 assignable transport buttons
- Additional programming functions on keybed
- 20 non-volatile memory locations
- Midi output jack
- Expression & sustain pedal TRS connectors
- Class-compliant with Windows XP, Vista (32 bit) & Mac OS X
- USB2.0 High Speed and USB bus-powered or optional power supply
- 5 difference colors including White, Black, Silver (Limited edition), Red and Blue for selection



➤ NEURON 3



➤ NEURON 5



➤ NEURON 6



samplitude[®]
11 silver



SPD-01

SPD-01

Features:

- Sustain foot pedal or Momentary FS controller for ICON keyboard, synthesizers, tone modules and drum – machines etc.
- 1.5m/5-foot cable with 1/4" phone plug
- Durable metal casing with non-slip rubber top & base





iKey

Features:

- Extremely compact and perfectly match with MacBook™
- 25-note velocity-sensitive synth- action keyboard
- Modulation touchpad
- Pitch touchpad
- Octave up/down
- Sustain button
- Multi velocity curves available for selection
- 2xUSB Connectors for daisy chain with iPad and iControls
- Class-compliant with Windows XP, Vista (32 bit), and Mac OS X
- USB bus-powered
- Difference colors and with printing aluminum cover is available (optional)
- Custom laser-engraving is available at on-line purchase



samplitude[®]
11 silver





iPad

Features:

- Extremely compact and perfectly match with MacBook™
- 12 integrated velocity-sensitive trigger pads send MIDI notes or control data
- X/Y touchpad
- MIDI CC assignable fader to control CC such as volume
- "Scene" button for customizing 4 scenes for instant control of multiple applications
- 2xUSB Connectors for daisy chain with iKey and iControls
- Class-compliant with Windows XP, Vista (32 bit), and Mac OS X
- USB bus-powered
- Difference colors and with printing aluminum cover is available (optional)
- Custom laser-engraving is available at on-line purchase



samplitude[®]
11 silver

COVER



Red

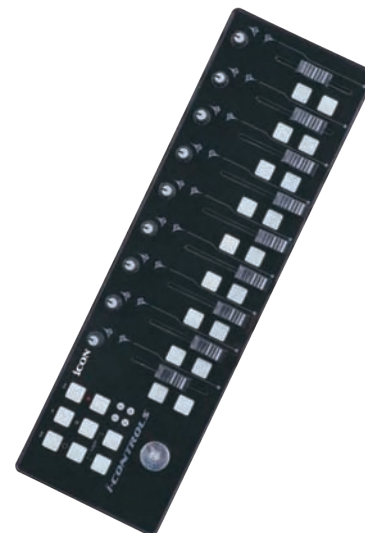
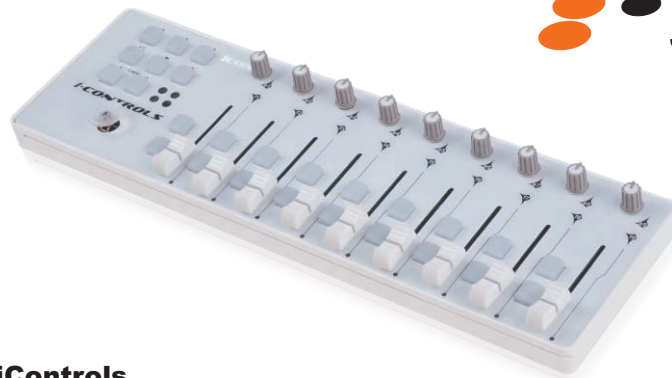
Pink

Blue

Black

Silver





iControls

Features:

- > Extremely compact and perfectly match with MacBook™
- > 9 assignable faders with 18 assignable buttons
- > 9 assignable data encoders for setting MIDI CC
- > Joystick for control
- > "Scene" button for customizing 4 scenes for instant control of multiple applications
- > 6 transport buttons
- > 2xUSB Connectors for daisy chain with iKey and iPad
- > Class-compliant with Windows XP, Vista (32 bit), and Mac OS X
- > USB bus-powered
- > Mackie control compatible
- > Difference colors and with printing aluminum cover is available (optional)
- > Custom laser-engraving is available at on-line purchase




samplitude[®]
11 silver



Red

Pink

Blue

Black

Silver



NEW

iDJ

Features:

- Touch sensitive scratch wheels with high resolution pulse sensor
Touch sensor scratch wheel platters give high resolution to experience an analog feel when scratching and mixing.
- Touch wheels sensitivity adjustable
- Vertical volume control faders
- Vertical tempo control faders
- Horizontal cross fader control
- 2x3-band EQ control knobs - Hi, Mid and Low (reassign able)
- Balance control knobs (reassign able)
- Gain control knobs (reassign able)
- 8 reassignable backlit buttons including "Vinyl Mode", "Sync", "Loop > ", "Loop < ", "Out", "In" & "Cue".
- 4 extra assignable knobs for effect control
- 8 extra assignable backlit buttons
- iMap™ midi mapping software included for reassigning midi mapping
- Extremely compact and perfectly match with MacBook™
- Class-compliant with Windows XP, Vista (32 bit), and Mac OS X
- USB bus-powered
- Available in Black and White
- Difference colors aluminum cover is available (optional)
- Custom laser-engraving service for aluminum cover is available at on-line purchase (optional)



Deckadance



NEW



**samplitude[®]
11 silver**



iCreative

Features:

- Very large and sensitive touch screen
- 8 x 16 notes layout on x and y axis
- 8 x 16 LED embedded
- 6 difference modes selectable for the touch screen for difference applications
 1. Piano: X-axis as 16 notes and Y-axis as 8 steps of modulation
 2. Drum: Touch screen divided into 8 drum pads.
 3. Fader: X-axis divided into 8 portions for 8 faders and Y-axis as sliding up and down for volume change
 4. Creativ 1-3: User simply rub, stroke, or tap to the touch screen to instantly create complex phrases with a single finger.
- AirLight™ 3D effector build in with adjustable sensitivity
- 20-arpeggio build-in with tempo
- 4-assignable encoders
- 2-assignable potentiometers
- 8-assignable buttons
- 8-layer change buttons for switching form one layer to another
- 1-assignable fader
- 2-segment LED screen
- 1-encoder for jog wheel
- Octave Up and Down buttons
- Transpose Up and Down buttons
- iMap™ midi mapping software included for reassigning midi mapping
- Extremely compact and perfectly match with MacBook™
- Class-compliant with Windows XP, Vista (32 bit), and Mac OS X
- USB bus-powered
- Available in Black and White
- Difference colors aluminum cover is available (optional)
- Custom laser-engraving service for aluminum cover is available at on-line purchase (optional)



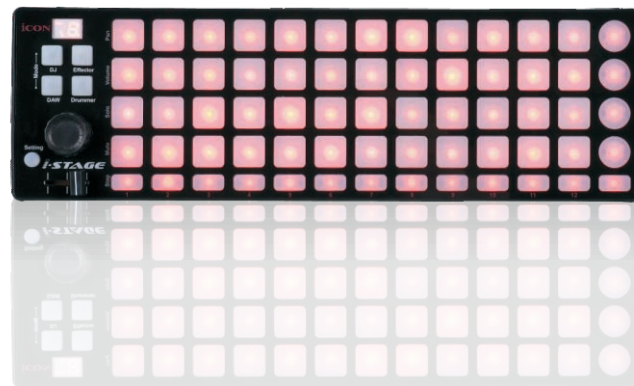
NEW



iStage

Features:

- 3 set of "4x4" velocity sensitive drum pads
- 4x16 buttons are equipped with dual color LED
- 17-buttons with red LED
- Buttons assignable for "Pan" control
- Buttons assignable for "Volume" control
- 4 difference modes for difference applications.
- 2-segment LED screen
- 1-encoder for jog wheel
- 1-assignable fader
- iMap™ midi mapping software included for reassigning midi mapping
- Extremely compact and perfectly match with MacBook™
- Class-compliant with Windows XP, Vista (32 bit), and Mac OS X
- USB bus-powered
- Available in Black and White
- Difference colors aluminum cover is available (optional)
- Custom laser-engraving service for aluminum cover is available at on-line purchase (optional)



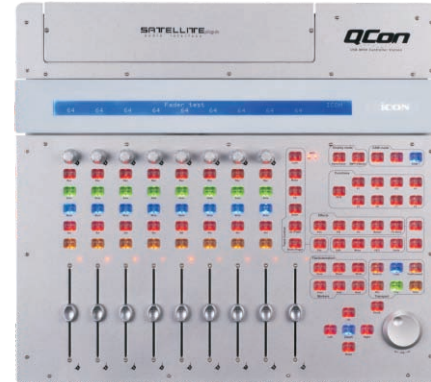
samplitude[®]
11 silver



QCon

Features:

- > 8 fully programmable motorized channel faders with layer shift
- > 1 touch-sensitive motorized fader for master channel
- > 8 fully programmable knobs with layer shift
- > Large backlit LCD to display channel name, control values etc. for each channel.
- > 18 assignable buttons
- > Jog wheel shuttle for fast search and control
- > Illuminated buttons for each channel including Rec-enable, Solo, Mute, Select and Monitor
- > 6- Illuminated transport buttons including Play, Stop, Rec, Rewind, Fastforward and loop
- > Illuminated zoom key with 4-direction keys
- > 9-illuminated assignable MIDI function buttons
- > Expansion slot for ICON's "Umix" series USB audio interface card
- > Class-compliant with Windows XP, Vista (32 bit), Windows 7 (32-bit & 64-bit) and Mac OS X (IntelMac)
- > USB 2.0 high speed connectivity
- > Mackie control build-in
- > Robust aluminum and metal casing with Kensington lock port.



samplitude[®]
11 silver



NEW

UMIX1008 SATELLITE



Umix1008 satellite

Features:

- 24bit 96/192KHz 10-In/8-Out USB recording Interface
- Use as a standalone USB audio interface or an audio plug-in for QCon
- 8x6 analog line I/O full duplex recording and playback
- Eight MIC/Instrument Preamps with gain controls
- Individual +48V phantom power supply switch for eight channels
- Individual Mic/Inst switch for eight channels
- 8-analog inputs and 6 analog outputs on 1/4" TRS jacks
- S/PDIF I/O on RCA coaxial connectors
- 1 x 1 – 16 channel MIDI I/O
- 2 headphone output with assignable source and individual volume control
- Supports sampling rates from 44.1Hz to 192K Hz
- Flexible channel routing via the software control panel
- USB2.0 High Speed equipped
- Supports Direct sound, WDM and ASIO2.0
- Compatible with Mac OSX and Windows XP, Vista (32bits) and Window 7 (32bits/64bits)
- Full duplex, simultaneous record/playback



**samplitude[®]
11 silver**



XSYNTH



X SYNTH

Features:

- DSP Synthesizer plug-in module
- 3 Synthesizer plug-ins each with 99 sound bank effects
 - Wild "Minimax"
 - Inspiring "Lightwave"
 - Charismatic "B4000"
- Extra online registration bonus, free plug-in "Vocoderizer"
- More plug-ins are available for "Buy online"
- Store up to 8 plug-ins to the card
- Load and perform any plug-in at a time
- USB 2.0 connection for remote control and configuration setup
- Plug-in Manager software for set up, fine tune and managing your plug-ins
- Microphone input
- Stereo headphone output



samplitude[®]
11 silver

G·SYNTH

s y n t h e s i z e r



G SYNTH

Features:

The ICON G-Synth synthesizer module offers a professional piano sound bank for your ICON midi controller. Main features include:

- 64MB Professional grand piano sound bank
- Build-in reverb and chorus effects
- 64-note (maximum) polyphony
- 2 balanced Line out (Left and Right) in TRS connectors
- Headphone output with volume control
- 2 Line outs
- Compatible with any ICON's Virtual, InSpire or Logicon series midi controllers
- Power supply by ICON keyboard (no external power adapter needed)



samplitude[®]
11 silver

FIREX^{ON} SATELLITE



FireXon Satellite

Features:

- 24bit 192KHz 2-In/2-Out firewire recording Interface
- 2x2 analog I/O full duplex recording and playback
- MIC input with +48V phantom power and gain control
- Hi-Z input with gain control
- 2 analog outputs on 1/4" TRS jacks
- 2 headphone outputs with volume control
- Two 6-pin Firewire ports for cascading
- Supports Direct sound, WDM and ASIO2.0
- Full duplex, simultaneous record/playback
- Power supply by ICON keyboard (No external power adapter needed)



samplitude[®]
11 silver

Utrack SATELLITE



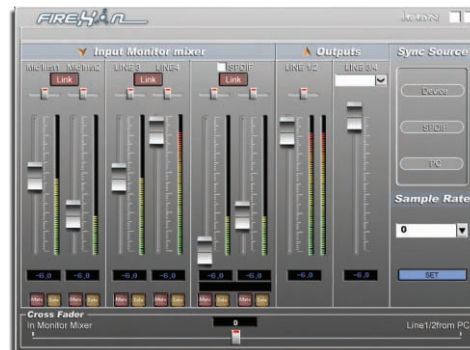
Utrack Satellite

Features:

- 24bit 192KHz 2-In/2-Out USB recording Interface
- 2x2 analog I/O full duplex recording and playback
- MIC input with +48V phantom power and gain control
- Hi-Z input with gain control
- 2 analog outputs on 1/4" TRS jacks
- 2 headphone outputs with volume control
- Supports Direct sound, WDM and ASIO2.0
- Full duplex, simultaneous record/playback
- Power supply by ICON keyboard (No external power adapter needed)



samplitude[®]
11 silver



Fire Xon

Features:

- 24bit 96/192KHz 6-In/6-Out Firewire recording Interface
- 4x4 analog balanced I/O full duplex recording and playback
- Dual MIC / Instrument preamps with LED display, gain controls and phantom power
- 2 analog inputs and 4 analog outputs on 1/4" TRS jacks
- S/PDIF I/O on RCA coaxial connectors
- 2 headphone outputs with assignable source and individual volume control
- 1 x 16-channels MIDI I/O
- Two 6-pin Firewire ports for cascading
- Supports Direct sound, WDM and ASIO2.0
- Full duplex, simultaneous record/playback
- Rugged aluminum construction



samplitude[®]
11 silver



Utrack Pro



Utrack Pro

Features:

- 24bit 96/192KHz 6-In/6-Out USB recording Interface
- 4x4 analog balanced I/O full duplex recording and playback
- Dual MIC / Instrument preamps with LED display, gain controls and phantom power
- 2 analog inputs and 4 analog outputs on 1/4" TRS jacks
- S/PDIF I/O on RCA coaxial connectors
- 2 headphone outputs with assignable source and individual volume control
- Adjustment for Direct Monitoring vs PC on the front panel
- Any four of the inputs could be routed to any four of the outputs on the software control panel.
- 1 x 1 16-channels MIDI I/O
- USB2.0
- Supports Direct sound, WDM and ASIO2.0
- Full duplex, simultaneous record/playback
- Rugged aluminum construction



**samplitude[®]
11 silver**

Utrack



Utrack

Features:

- 24bit 96/192KHz 4-In/4-Out USB recording Interface
- 2x2 analog balanced I/O full duplex recording and playback
- Dual MIC / Instrument preamps with LED display, gain controls and phantom power
- 2 analog outputs on 1/4" TRS jacks
- S/PDIF I/O on RCA coaxial connectors
- Headphone output with assignable source and individual volume control
- Adjustment for Direct Monitoring vs PC on the front panel
- Any two of the inputs could be routed to any two of the outputs on the software control panel.
- 1 x 1 16-channels MIDI I/O
- USB2.0
- Supports Direct sound, WDM and ASIO2.0
- Full duplex, simultaneous record/playback
- Rugged aluminum construction



**samplitude[®]
11 silver**



CUBE



CUBE

Features:

- 24bit 192KHz 2-In/2-Out USB recording Interface
- 2x2 analog line I/O full duplex recording and playback
- 2 analog inputs and 2 analog outputs on 1/4" TRS jacks
- Master volume control on the front panel
- 1 headphone output with individual volume control
- USB2.0 High Speed equipped
- USB bus-powered
- Supports Direct sound, WDM and ASIO2.0
- Full duplex, simultaneous record/playback
- Rugged aluminum construction



samplitude[®]
11 silver

CUBE

P R O



CUBE PRO

Features:

- 24bit 192KHz 4-In/4-Out USB recording Interface
- 4x4 analog line I/O full duplex recording and playback
- 4 analog inputs and 4 analog outputs on 1/4" TRS jacks
- Master volume control on the front panel
- 1 headphone output with individual volume control
- Any four of the inputs could be routed to any four of the outputs on the software control panel.
- USB2.0 High Speed equipped
- USB bus-powered
- Supports Direct sound, WDM and ASIO2.0
- Full duplex, simultaneous record/playback
- Rugged aluminum construction



samplitude[®]
11 silver

CUBE·G



CUBE·G

Features:

- 24bit 192KHz 4-In/4-Out USB recording Interface
- 2x2 analog line I/O full duplex recording and playback
- 1 Mic inputs with gain control on the front panel
- 1 Hi-Z input with gain control on the front panel to use with guitars, basses, etc..
- Master volume control on the front panel
- 1 headphone output with assignable source and individual volume control
- Midi I/O
- S/PDIF I/O on RCA coaxial connectors
- USB2.0 High Speed equipped
- USB bus-powered
- Supports Direct sound, WDM and ASIO2.0
- Full duplex, simultaneous record/playback
- Rugged aluminum construction



samplitude 11 silver

CUBE·Mini



CUBE·Mini

Features:

- Extremely compact size : around 9cm x 9cm
- 24bit 192KHz 2-In/2-Out USB recording Interface
- 2x2 analog I/O full duplex recording and playback
- 1 Mic in with preamp for dynamic mic, switchable to Hi-Z in for guitar
- 1 Hi-Z in for guitar
- 2 line out on a stereo 1/4" TRS jack
- 1 headphone output on 1/4" TRS jack
- USB2.0 High Speed equipped and USB bus-powered
- Supports Direct sound, WDM and ASIO2.0
- Compatible with Mac OSX and Windows XP, Vista (32bits)
- Full duplex, simultaneous record/playback
- Rugged aluminum construction



samplitude 11 silver

CUBE DJ

NEW



CUBE DJ

Features:

- 24bit 96/192KHz 4-In/4-Out USB recording Interface for DJ
- 4x4 analog line I/O full duplex recording and playback
- 4 analog inputs and 4 analog outputs on RCA jacks
- 1-mic input on XLR connector with gain control
- Individual "Line – Phono " level switch for input 1 & 2
- "Mic in – Line1/2 in" switch for input 1&2
- Horizontal cross fader for "Master" volume control for output 1/2 or 3/4.
- Cross fader master volume control allow instant switching between output 1/2 or 3/4.
- 1 headphone output with assignable source and individual volume control
- Flexible channel routing via the software control panel
- USB2.0 High Speed equipped and USB bus-powered
- Supports Direct sound, WDM and ASIO2.0
- Compatible with Mac OSX and Windows XP, Vista (32bits)
- Full duplex, simultaneous record/playback
- Rugged aluminum construction



CUBE 4nano

NEW



CUBE 4nano

Features:

- 24bit 96/192KHz 4-In/4-Out USB recording Interface
- 2x2 analog line I/O full duplex recording and playback
- Dual MIC/Instrument Preamps with gain controls
- LED metering, Phantom power and gain
- 2 analog outputs on 1/4" TRS jacks
- S/PDIF I/O on RCA coaxial connectors
- 1 x 1 – 16 channel MIDI I/O
- Master volume control on the front panel
- 1 headphone output with assignable source and individual volume control
- Supports sampling rates from 44.1Hz to 192K Hz
- Flexible channel routing via the software control panel
- USB2.0 High Speed equipped and USB bus-powered
- Supports Direct sound, WDM and ASIO2.0
- Compatible with Mac OSX and Windows XP, Vista (32bits)
- Full duplex, simultaneous record/playback
- Rugged aluminum construction



UMIX12

NEW



UMix 12

Features:

- ✓ 6-Mic / 8-Line input channels and 2-stereo input
- ✓ Expansion slot for 6x6 USB audio interface – Umix 66 plug-in
- ✓ (Umix 66 plug-in – 6x6 USB2.0 (24bit/96Hz) audio interface with MIDI & S/PDIF I/O) optional
- ✓ 6 individual +48V on/off switches for each mic input channels
- ✓ Build-in compressor effect for channels 1-4 with individual control knob.
- ✓ Build-in 16-program digital effect with on/off switch
- ✓ 3-band channel EQ – High, Mid and Low
- ✓ Build-in HPF for each input channel.
- ✓ Effect control knob on each channel to adjust effect value
- ✓ Pan control knob on each channel to adjust left and right pan.
- ✓ 8 x 60mm sliding fader to adjust each input channel level.
- ✓ 1 x 60mm sliding fader to adjust the level of Effect Return bus.
- ✓ 1 x 60mm sliding fader to adjust the output level of Output 1-2 buses.
- ✓ 1 x 60mm sliding fader to adjust the output level of Output 3-4 buses.
- ✓ Stereo headphone output with volume control
- ✓ Monitor (control room) L/R outputs
- ✓ Output 1 / 2 / 3 / 4 outputs on TRS
- ✓ Main mix Stereo L/R outputs on XLR.
- ✓ Monitor Headphone outputs 1/2 with individual volume control knobs for record monitoring (function only when Umix 66 installed)
- ✓ Direct Outputs 1 / 2 / 3 / 4 for connecting external recording devices.
- ✓ Footswitch connector for connecting footswitch to turn on/off the internal effect for instant comparison.

UMIX66 SATELLITE

NEW



Umix66 satellite

Features:

- ✓ 24-Bit 96/192KHz 6-In/6-Out USB Recording Interface
- ✓ 4x4 analog I/O full duplex recording and playback
- ✓ 4xMIC/Instrument preamps with individual gain control and phantom power switch on Umix12's Ch.1-4
- ✓ Input recording signal via Umix12's unique design EQ, Comp circuit
- ✓ Input gain level adjust by the Umix12's Ch.1-4 faders
- ✓ 4 analog outputs on "Output 1/2" & "Output 3/4" channels
- ✓ The output level is adjusted by the "Output 1/2" & "Output 3/4" faders
- ✓ 2xheadphone output with assignable source and individual volume control
- ✓ S/PDIF I/O on RCA coaxial connectors
- ✓ 1 x 1 – 16 channel MIDI I/O
- ✓ USB2.0 High Speed equipped and USB bus-powered
- ✓ Supports DirectSound, WDM and ASIO2.0
- ✓ Compatible with Mac OS (Intel-Mac) and Windows XP, Vista (32-bit/64-bit) & Windows 7 (32-bit/64-bit)
- ✓ Full duplex, simultaneous record/playback
- ✓ Rugged aluminum construction (Umix12)



samplitude[®]
11 silver

UMIX 8

NEW



Umix 8

Features:

- 4-Mic / 6-Line input channels and 1-stereo input
- Expansion slot for 6x6 USB audio interface – Umix 44 plug-in
- (Umix 44 plug-in – 4x4 USB2.0 (24bit/96Hz) audio interface with MIDI & S/PDIF I/O) optional
- 4 individual +48V on/off switches for each mic input channels
- Built-in compressor effect for channels 1-2 with individual control knob.
- Built-in 16-program digital effect with on/off switch
- 3-band channel EQ – High, Mid and Low
- Built-in HPF for each input channel from ch.1 to ch.6.
- Effect control knob on each channel to adjust effect value
- Pan control knob on each channel to adjust left and right pan.
- Level control knob on each channel to adjust input and output channel level
- Stereo headphone output with volume control
- Monitor (control room) L/R outputs
- Main mix Stereo L/R outputs on XLR.
- Monitor Headphone outputs 1/2 with individual volume control knobs for record monitoring (function only when Umix 44 installed)
- Direct Outputs 1&2 for connecting external recording devices.
- Footswitch connector for connecting footswitch to turn on/off the internal effect for instant comparison.

UMIX44 SATELLITE

NEW



Umix44 satellite

Features:

- 24-Bit 96/192KHz 4-In/4-Out USB Recording Interface
- 2x2 analog I/O full duplex recording and playback
- Dual MIC/Instrument preamps with individual gain control and phantom power switch on Umix 8's Ch.1 & Ch.2
- Input recording signal via Umix8's unique design EQ, Comp circuit
- Input gain level adjust by the Umix8's Ch.1 and Ch.2 faders
- 2 analog outputs on "Main Out L/R channels"
- The output level is adjusted by the "Main Out L/R knob"
- 1 headphone output with assignable source and individual volume control
- S/PDIF I/O on RCA coaxial connectors
- 1 x 1 – 16 channel MIDI I/O
- USB2.0 High Speed equipped and USB bus-powered
- Supports DirectSound, WDM and ASIO2.0
- Compatible with Mac OS (Intel-Mac) and Windows XP, Vista (32-bit/64-bit) & Windows 7 (32-bit/64-bit)
- Full duplex, simultaneous record/playback
- Rugged aluminum construction (Umix8)



samplitude[®]
11 silver

ReoTube G2X

Features:

- A true tube Microphone/Instrument preamp
- Limiter build-in for leveling control
- "Saturation" for harmonic/warmth adjustment
- Input gain control with LED metering displays
- Enhance control
- Analog VU meter with warm orange backlight
- 48V phantom power
- Low cut switch
- Phase switch
- 1/4" jack for external processor
- Balanced XLR microphone input and 1/4" TRS input
- XLR connector for balanced line output
- S/PDIF output via an internal analog-to-digital converter sends 24-bit digital audio to hard disk recorders via the rear panel RCA connector
- Rugged aluminum construction and adopted ICON's Reo series racking system



Reo TubeCom16



Features:

- Fully automatic and manual compression functions
- Interactive knee adoption circuit for hard/soft compression
- Vacuum tube circuitry for a warm sound with no unwanted noise, hum or hiss
- Large, backlit VU meter
- 16 compression presets
- Attack/Ratio/Saturation/Threshold/Release for "Manual" adjustment
- Balanced XLR and TRS input and output
- Rugged aluminum construction and adopted ICON's Reo series racking system

REORACK

Features:

- 19" rack mount cabinet
- Easy installation
- Rugged metal construction
- Mount any one or two units of Reo series processors, FireXon or UtrackPro



Processor

ReoTube G2



Features:

- A true tube Microphone/Instrument preamp
- Limiter build-in for leveling control
- "Saturation" for harmonic/warmth adjustment
- Input gain control with LED metering displays
- Enhance control
- Analog VU meter with warm orange backlight
- 48V phantom power
- Low cut switch
- Phase switch
- 1/4" jack for external processor
- Balanced XLR microphone input and 1/4" TRS input
- XLR connector for balanced line output
- Rugged aluminum construction and adopted ICON's Reo series racking system

ReoAmp



Features:

- Compact 4-channels headphone amplifier with 8 outputs
- Powerful to drive high impedance headphone such as studio reference headphone
- Independent level control and "Shape Out" switch for each channel
- LED output meter for each channel for monitoring
- Master level control with LED metering and L/R pan adjustment
- 2 Channel and Stereo selection switch
- Rugged aluminum construction and adopted ICON's Reo series racking system



NeoAmp



Features:

- 4-channels headphone amplifier
- Four 1/4" stereo headphone outputs
- Individual volume control for each headphone output
- 1/4" Stereo input
- Rugged aluminum construction and adopted ICON's Neo series racking system

NeoPreamp



Features:

- 2 independent combo inputs, as fully balanced XLR input or 1/4" unbalanced high-impedance input (ideal for electric guitar)
- Separate gain controls for each channel
- Phantom power switch with LED for each channel
- Dual-purpose, independent 1/4" outputs accept tip-ring-sleeve (balanced) or tip-sleeve (unbalanced) plugs
- Extremely low noise
- Rugged aluminum construction and adopted ICON's Neo series racking system

Processor

NeoPhantom



Features:

- 2 mic inputs with Phase switch
- 48V Phantom power
- Signal to noise ratio: 117dB
- Rugged aluminum construction and adopted ICON's Neo series racking system

Neo Series



MidiPort



Midi Port

Features:

- Standard USB MIDI cable, optimized for Windows Vista/XP and Mac OS X
- 1-In/1-Out 16 MIDI channels
- Perfect MIDI timing
- Compact and portable design
- True plug-and-play installation; no driver required
- LED displays for power, MIDI & USB signals

NEW

MidiPort 2



Midi Port 2

Features:

- MidiPort2 - 2-in / 2-out MIDI interface (32x32 MIDI channels)
- Supports multiple platforms with MultiPlat™ driver (Windows only)
- MultiPlat™ driver available for 32-bit and 64-bit Windows platforms
- USB 2.0 for high-speed connection
- Plug & play for Mac and Window platforms
- Class-compliant with Windows XP, Vista (32 bit), and Mac OS X
- No IRQ, I/O address or DMA channel setup
- Perfect MIDI timing
- USB bus powered, no external power supply required



samplitude 11 silver

24

Midi Interface

Neo Midi 2



NEW

Neo Midi 2 G2

Features:

- NeoMidi2 - 2-in / 2-out MIDI interface (32x32 MIDI channels)
- Supports multiple platforms with MultiPlat™ driver (Windows only)
- MultiPlat™ driver available for 32-bit and 64-bit Windows platforms
- USB 2.0 for high-speed connection
- Plug & play for Mac and Window platforms
- Class-compliant with Windows XP, Vista (32 bit), and Mac OS X
- No IRQ, I/O address or DMA channel setup
- Perfect MIDI timing
- MIDI-in and MIDI-out activity indicators for each port
- USB bus powered, no external power supply required



samplitude 11 silver

CUBE Mi3



NEW

CubeMi3

Features:

- CubeMi3 - 3-in / 3-out MIDI interface (48x48 MIDI channels)
- Supports multiple platforms with MultiPlat™ driver (Windows only)
- MultiPlat™ driver available for 32-bit and 64-bit Windows platforms
- USB 2.0 for high-speed connection
- Plug & play for Mac and Window platforms
- Class-compliant with Windows XP, Vista (32 bit), and Mac OS X
- No IRQ, I/O address or DMA channel setup
- Perfect MIDI timing
- MIDI-in and MIDI-out activity indicators for each port
- USB bus powered, no external power supply required



samplitude 11 silver

ReoMiDi4



NEW

ReoMiDi 4 G2

Features:

- ReoMiDi4 - 4-in / 4-out MIDI interface (64x64 MIDI channels)
- Supports multiple platforms with MultiPlat™ driver (Windows only)
- MultiPlat™ driver available for 32-bit and 64-bit Windows platforms
- USB 2.0 for high-speed connection
- Plug & play for Mac and Window platforms
- Class-compliant with Windows XP, Vista (32 bit), and Mac OS X
- No IRQ, I/O address or DMA channel setup
- Perfect MIDI timing
- MIDI-in and MIDI-out activity indicators for each port
- USB bus powered, no external power supply required



samplitude 11 silver

CUBE Mi5



NEW

CubeMi5

Features:

- CubeMi5 - 5-in / 5-out MIDI interface (80x80 MIDI channels)
- Supports multiple platforms with MultiPlat™ driver (Windows only)
- MultiPlat™ driver available for 32-bit and 64-bit Windows platforms
- USB 2.0 for high-speed connection
- Plug & play for Mac and Window platforms
- Class-compliant with Windows XP, Vista (32 bit), and Mac OS X
- No IRQ, I/O address or DMA channel setup
- Perfect MIDI timing
- MIDI-in and MIDI-out activity indicators for each port
- USB bus powered, no external power supply required



samplitude 11 silver



Air Midi Rx

USB MIDI Wireless Receiver for ICON keyboards

Features:

- 2.4GHz wireless MIDI receiver
- Hot plug support, no driver needed
- Auto searching for setting wireless channel
- 64 channels available
- Duplex MIDI data wireless transfer
- LED indicator for signal and power
- Auto installation feature
- USB2.0 High speed and USB bus-powered
- Class-compliant with Windows XP, Vista (32bit) and Mac OS X
- Compact size



NEW

DT-8A air

Features:

- Compact high performance active studio monitor
- Active 2-Way monitor system with professional crossover design
- The ideal solution for near-field monitoring in any recording or broadcasting facility
- Bi-amped: 150W (LF), 80W (HF)
- High-end 1" dome tweeter
- Soft fabric dome and surround with wide-dispersion optimized geometry
- Big surround to reduce distortion
- Low loss ferrofluid-free magnet system for open and detailed sound
- ICON Custom designed 8" woofer
- Nomex®reinforced paper cone for crisp, clean and very open reproduction
- Low loss SBR surround with low creep and long time reliability
- Progressive spider to achieve soft clipping and low distortion even under extreme load
- Heavy dual magnet ferrite magnet system with extended height for superb bass reproduction



DT-5A air

Features:

- Compact high performance active studio monitor
- Active 2-Way monitor system with professional crossover design
- The ideal solution for near-field monitoring in any recording or broadcasting facility
- Bi-amped: 80W (LF), 40W (HF)
- High-end 1" dome tweeter
- Soft fabric dome and surround with wide-dispersion optimized geometry
- Big surround to reduce distortion
- Low loss ferrofluid-free magnet system for open and detailed sound
- ICON Custom designed 5.25" woofer
- Nomex®reinforced paper cone for crisp, clean and very open reproduction
- Low loss SBR surround with low creep and long time reliability
- Progressive spider to achieve soft clipping and low distortion even under extreme load
- Heavy dual magnet ferrite magnet system with extended height for superb bass reproduction



NEW

DT-6A air

Features:

- Compact high performance active studio monitor
- Active 2-Way monitor system with professional crossover design
- The ideal solution for near-field monitoring in any recording or broadcasting facility
- Bi-amped: 120W (LF), 60W (HF)
- High-end 1" dome tweeter
- Soft fabric dome and surround with wide-dispersion optimized geometry
- Big surround to reduce distortion
- Low loss ferrofluid-free magnet system for open and detailed sound
- ICON Custom designed 6.5" woofer
- Nomex®reinforced paper cone for crisp, clean and very open reproduction
- Low loss SBR surround with low creep and long time reliability
- Progressive spider to achieve soft clipping and low distortion even under extreme load
- Heavy dual magnet ferrite magnet system with extended height for superb bass reproduction



AIRCON

Features:

- 2.4GHz wireless band
- Large white backlit LCD display
- Control up to 7 monitor system including front L/R, side L/R, rear L/R & Center
- Control up to 4 Subwoofer system
- Extremely easy setup
- Allow up to 64 Studio rooms installation in one location
- Large and well layout buttons for easy controlling
- Mute Control
- Hi-Pass setting control
- EQ Controls: Treble, Mid and Bass
- Volume control
- Build-in li-ion rechargeable battery
- Rugged aluminum construction





PX-T8A²

Features:

- Compact high performance active studio monitor
- Bi-amped: 100W (LF), 30W (HF)
- Active 2-Way Monitor System with complex Active Crossover design
- High, Mid and Low range contour control
- High-Pass Filter - Flat, 60Hz & 80Hz selectable
- The ideal solution for near-field monitoring in any recording or broadcasting facility
- Designed for use in stereo as well as multichannel setups
- Tuned by top-skilled acoustic engineer's ear to fulfill any requirements in real recording studio environments
- ICON's "Vasorb™" monitor stands are included



PX-T6A²

Features:

- Compact high performance active studio monitor
- Bi-amped: 80W (LF), 30W (HF)
- Active 2-Way Monitor System with complex Active Crossover design
- High, Mid and Low range contour control
- High-Pass Filter - Flat, 60Hz & 80Hz selectable
- The ideal solution for near-field monitoring in any recording or broadcasting facility
- Designed for use in stereo as well as multichannel setups
- Tuned by top-skilled acoustic engineer's ear to fulfill any requirements in real recording studio environments
- ICON's "Vasorb™" monitor stands are included



PX-T5A²

Features:

- Compact high performance active studio monitor
- Bi-amped: 60W (LF), 30W (HF)
- Active 2-Way Monitor System with complex Active Crossover design
- High, Mid and Low range contour control
- High-Pass Filter - Flat, 60Hz & 80Hz selectable
- The ideal solution for near-field monitoring in any recording or broadcasting facility
- Designed for use in stereo as well as multichannel setups
- Tuned by top-skilled acoustic engineer's ear to fulfill any requirements in real recording studio environments
- ICON's "Vasorb™" monitor stands are included



PX-Sub10A

Features:

- 10" Studio subwoofer system
- Phase adjustment in 0° / 180°
- 29-200Hz precise low-frequency reproduction
- Balanced XLR outputs
- Subwoofer level control
- Crossover frequency range adjustment
- Low frequency extension adjustment
- 200W output power





SX-8A

Features:

- Compact and powerful with very precise sound reproduction.
- Two-way active studio reference monitor with ported tuned enclosure providing extremely accurate monitoring for recording studio, post-production and multi-media applications.
- 1" silk dome tweeter with neodymium magnet, plus heat sink and ferrofluid cooling provide smooth and sweet high frequency response.
- HF: 60W / LF: 120W
- Active crossover uses a multi-pole design for linear response from bottom to top.
- A/V shielded for multimedia applications providing clean operation near computer CRT monitors.
- "Vasorb™" monitor rubber feet included



NEW

SX-6A

Features:

- Compact and powerful with very precise sound reproduction.
- Two-way active studio reference monitor with ported tuned enclosure providing extremely accurate monitoring for recording studio, post-production and multi-media applications.
- 1" silk dome tweeter with neodymium magnet, plus heat sink and ferrofluid cooling provide smooth and sweet high frequency response.
- HF: 40W / LF: 80W
- Active crossover uses a multi-pole design for linear response from bottom to top.
- A/V shielded for multimedia applications providing clean operation near computer CRT monitors.
- "Vasorb™" monitor rubber feet included



NEW

SX-5A

Features:

- Compact and powerful with very precise sound reproduction.
- Two-way active studio reference monitor with ported tuned enclosure providing extremely accurate monitoring for recording studio, post-production and multi-media applications.
- 1" silk dome tweeter with neodymium magnet, plus heat sink and ferrofluid cooling provide smooth and sweet high frequency response.
- HF: 30W / LF: 60W
- Active crossover uses a multi-pole design for linear response from bottom to top.
- A/V shielded for multimedia applications providing clean operation near computer CRT monitors.
- "Vasorb™" monitor rubber feet included



NEW

SX-4A

Features:

- Compact but powerful with very precise sound reproduction
- Two-way active studio monitor with ported tuned enclosure providing extremely accurate monitoring for recording studio or multi-media applications
- 4.5" NRSC Paper Cone and CU-cap on pole piece
- 1" silk dome tweeter with neodymium magnet, plus heat sink and ferrofluid cooling provide smooth and sweet high frequency response.
- 40-watt-per-channel amplifier
- Balanced 1/4" TRS input connector
- Left/Right RCA inputs
- Front panel controls for Volume, Treble and Bass level
- 1/4" Headphone input with volume control at front panel
- MDF cabinet with bass reflex port design, ideal for professional applications



SX-3A

Features:

- Compact but powerful with very precise sound reproduction
- Two-way active studio monitor with ported tuned enclosure providing extremely accurate monitoring for recording studio or multi-media applications
- 3.5" NRSC Paper Cone and CU-cap on pole piece
- 1" silk dome tweeter with neodymium magnet, plus heat sink and ferrofluid cooling provide smooth and sweet high frequency response.
- 40-watt-per-channel amplifier
- Balanced 1/4" TRS input connector
- Left/Right RCA inputs
- Front panel controls for Volume, Treble and Bass level
- 1/4" Headphone input with volume control at front panel
- MDF cabinet with bass reflex port design, ideal for professional applications



SX-Sub8A

Features:

- 8" Woofer
- Phase adjustment in 0° / 180°
- 30-150 Hz precision low-frequency reproduction
- LFE - Slave mode selectable
- Low Pass filter control ranged from 50Hz - 150Hz
- Subwoofer output level control (gain)
- Sat/Sub I/O connectors for right and left channel
- Unbalanced RCA output connectors
- 150W power handling @ 8 Ohms
- Studio cabinet ideal for professional applications



Scan 2



Scan 2

Features:

- > ICON unique, innovative "Scan™" 9mm Neodymium (JP) magnet driver provide ultra clean and pure sound output.
- > Smooth, well balanced frequency response
- > Noise isolation technology
- > Changeable ear "pad" in 3- sizes (small, medium and large) for perfect-fit to different user.
- > Super soft ear pads maximize comfort to ears and isolation from ambient sounds.
- > 0.7m cable with 3.5mm gold-plated jack for iPod™ user.
- > 1m extension cable with 6.5mm gold-plated headphone jack is provided for mobile recording user.
- > Handy pouch included



Scan 3



Scan 3

Features:

- > ICON unique, innovative "ScanPro™" 30mm Neodymium (JP) magnet driver provide ultra clean & pure sound output.
- > Smooth, well balanced frequency response.
- > Soft ear hook provide comfortable and secure fit to your ear.
- > 0.7m cable with 3.5mm gold-plated jack for iPod™ user.
- > 6.5mm gold-plated headphone jack adaptor is provided for mobile recording user.
- > Handy pouch included.



HP Series

NEW

HP-360

Features:

- > ICON unique, innovative "ScanPro™" 50mm
- > Neodymium (JP) magnet driver provide ultra clean & pure sound output.
- > Smooth, well balanced frequency response
- > Very soft earpad provide comfortable and secure fit to your ear
- > Very flexible bow provide comfort for extensive user
- > Axial pivot joint.
- > 1.5m cable with 3.5mm gold-plated jack for iPod™ user.
- > 3.5mm to 6.35mm gold-plated adaptor included.



HP-240

Features:

- > Closed and dynamic studio reference headphone
- > Impedance: 60ohms
- > Frequency response: 16Hz - 20KHz
- > Sensitivity: 98dB
- > Continuous power rating: 40mW
- > SPL: 98dB
- > Length of cable: 3.0m (9.84ft)
- > Connector: Gold-plated stereo mini jack with 1/4" adaptor
- > Headphone pressure: ~3N
- > Weight without cable: 220g



HP-280

Features:

- > Closed and dynamic studio reference headphone
- > Impedance: 140ohms
- > Frequency response: 20Hz - 20KHz
- > Sensitivity: 98dB
- > Continuous power rating: 30mW
- > SPL: 90dB
- > Length of cable: 3.0m (9.84ft)
- > Connector: Gold-plated stereo mini jack with 1/4" adaptor
- > Headphone pressure: ~4N
- > Weight without cable: 260g



HP-430

Features:

- > 1Closed and dynamic studio reference headphone
- > Impedance: 200ohms
- > Frequency response: 20Hz - 20KHz
- > Sensitivity: 99dB
- > Continuous power rating: 40mW
- > SPL: 94dB
- > Length of cable: 3.0m (9.84ft)
- > Connector: Gold-plated stereo mini jack with 1/4" adaptor
- > Headphone pressure: ~5N
- > Weight without cable: 300g



M Series

M² Large Diaphragm Condenser

- Golden painted "True" large diaphragm with active mylar foil diameter of 1in (25mm)
- Cardioids patterns
- Switch able high-pass filter and 10dB pad
- Low cut
- Class A, preamplifier circuitry eliminates cross-over distortion
- Very low self-noise
- Exceptional low-frequency reproduction
- High output level
- High input SPL capability
- No cross-over distortion
- Extremely uniform polar response
- Classic character and rugged construction
- Optional swivel mount



M³ Large Diaphragm Condenser

- Golden painted "True" large diaphragm with active mylar foil diameter of 1in (25mm)
- Cardioids, omni and figure 8 patterns
- Switch able high-pass filter and 10dB pad
- Low cut
- Class A, preamplifier circuitry eliminates cross-over distortion
- Very low self-noise
- Exceptional low-frequency reproduction
- High output level
- High input SPL capability
- No cross-over distortion
- Extremely uniform polar response
- Classic character and rugged construction
- Optional swivel mount



Microphones

O Series

O₂ Studio Condenser Microphone

- Golden painted 19mm capsule
- Cardioids patterns
- True 20Hz to 20KHz frequency response with pronounced presence boost
- Switch able high-pass filter and 10dB pad
- Low cut
- Very low self-noise
- Exceptional low-frequency reproduction
- High output level
- High input SPL capability
- Extremely uniform polar response
- Classic character and rugged construction
- Optional swivel mount



O₃ Studio Condenser Microphone

- Dual golden painted 19mm capsule
- Cardioids, omni and figure 8 patterns
- True 20Hz to 20KHz frequency response with pronounced presence boost
- Switch able high-pass filter and 10dB pad
- Low cut
- Very low self-noise
- Exceptional low-frequency reproduction
- High output level
- High input SPL capability
- Extremely uniform polar response
- Classic character and rugged construction
- Optional swivel mount





Series

D1 Dynamic Microphone

- Premium dynamic instrument/live-sound vocal microphone
- Neodymium magnet structure delivers higher output for increased dynamic range
- Response tailored for instrumental and vocal on-stage performance
- Accurate cardioids pattern for added immunity to feedback
- Extremely high sensitivity
- Light-weight die cast metal body with dark matte finish
- Dent-resistant spring steel grille with integrated windscreen



D2 Dynamic Microphone

- Premium dynamic instrument/live-sound vocal microphone
- Neodymium magnet structure delivers higher output for increased dynamic range
- Build-in suspension system ensures that mechanical and electronic noise is suppressed to inaudible level
- Response tailored for instrumental and vocal on-stage performance
- Accurate cardioids pattern for added immunity to feedback
- Extremely high sensitivity
- Light-weight die cast metal body with dark matte finish
- Dent-resistant spring steel grille with integrated windscreen



Series

U¹ USB Recording Microphone

- Plug & Play USB connection
- Support up to 16-bit sample rate
- Supports 8KHz, 11.025KHz, 22.05KHz, 44.1KHz and 48KHz sampling rates
- USB power supply, no extra power supply needed
- Wide frequency response : from 20Hz to 20KHz
- 19mm Capsule
- Cardioid pickup pattern
- Stand and bracket are included
- Ideal for recording and Podcasting



Beetles Series



Features:

- › Transmitter Angled Plug is adjustable for both Fender and Gibson-style guitar jacks
- › Charger is built into receiver unit
- › Rechargeable battery is included
- › Ultra-compact transmitter unit
- › Battery-level LED display for both receiver and transmitter
- › Excellent sound quality and reception
- › UHF frequencies drastically reduce interference
- › Available for acoustic, electric or bass guitars



Acoustic Guitar

Wireless System Design For Acoustic Guitar

Features:

- › Ultra-compact wireless transmitter for acoustic guitar
- › Rotary 1/4" plug works for Fender and Gibson-style jacks
- › Pedal-style receiver fits easily onto your pedal board
- › Battery powered operation
- › Red and green battery level LED display
- › RF signal LED display
- › UHF frequencies reduce interference



Electric Guitar

Wireless System Design For Electric Guitar

Features:

- › Ultra-compact wireless transmitter for electric guitar
- › Rotary 1/4" plug works for Fender and Gibson-style jacks
- › Pedal-style receiver fits easily onto your pedal board
- › Battery powered operation
- › Red and green battery level LED display
- › RF signal LED display
- › UHF frequencies reduce interference



Bass Guitar

Wireless System Design For Bass Guitar

Features:

- › Ultra-compact wireless transmitter for bass guitar
- › Rotary 1/4" plug works for Fender and Gibson-style jacks
- › Pedal-style receiver fits easily onto your pedal board
- › Battery powered operation
- › Red and green battery level LED display
- › RF signal LED display
- › UHF frequencies reduce interference

MB-01

Tripod Boom Microphone Stand

- Height adjustable mic stand comes with a durable tripod base and foldable legs for easy storage
- Heavy duty and robust
- Die-cast and steel construction
- Clip-on cable holder included
- Sleek black finish



MB-02

Microphone Table Stand

- Adjustable height from 21cm to 28cm
- Die-cast and steel construction
- Robust and heavy duty
- Sleek black finish
- Mic clip included
- Ideal for Pod-casting



MB-03

Desk Mount Scissor Style Microphone Stand

- Solid and easy handle microphone desk arm
- Height adjustable to 90cm
- Perfect for studios and multi-media workstations
- Die-cast & steel construction
- Sleek black finish
- 16-foot XLR microphone cable is included
- 55mm adjustable screw-on clamp and desktop placement with screws are included



MB-04

Ultra-Light Tripod Boom Stand

- Height adjustable mic stand comes with a durable tripod base and foldable legs for easy storage
- Light-weight construction for easy carry
- Clip-on cable holder included
- Sleek black finish



MB-05

Microphone Table Stand

- Adjustable height from 240mm to 400mm
- 57mm flexible neck included
- Die-cast and steel construction
- Robust and heavy duty
- Sleek black finish
- Mic clip included
- Ideal for Pod-casting



NEW

MB-07

Microphone Table Stand

- Height adjustable from 39cm to 51cm
- Durable steel construction
- Robust and heavy duty
- Mic clip included
- Sleek black finish
- Clip-on cable holder included
- Stable heavy metal base



NEW

PF-01

Pop Filter

- High efficiency double-layer acoustic pop filter
- Adjustable clamp for any microphone stand
- Flexible gooseneck for precise positioning
- Extra large pop filter



SM-02

Mic Shock Mount

- Shock mount for large diaphragm studio condenser microphone
- Compatible with M3, M2, O3 and O2



SB-100

Studio Monitor Stands

- Universal monitor stand, suitable for 5.5" or below monitor speaker
- Extremely stable and robust
- 4 adjustable fixtures fit perfectly with ICON "Vasorb"™ monitor rubber stands
- ICON difference model of monitors size are labeled for easy installation



SB-200

Studio Monitor Stands

- Universal monitor stand, suitable for 6.5" or above monitor speaker
- Extremely stable and robust
- 4 adjustable fixtures fit perfectly with ICON "Vasorb"™ monitor rubber stands
- ICON difference model of monitors size are labeled for easy installation





www.icon-global.com

info@icon-global.com

Contact Information

U.S.OFFICE:

ICON Digital Corporation

Add: 2222 Pleasant View Road Suite #1 Middleton, USA, WI 53562

Tel: 608-829-3450, Fax: 608-829-1972

E-mail: infous@icon-global.com

H.K.OFFICE:

ICON (Asia)

Add: Unit 808, 8/F., Sunley Centre, 9 Wing Yin Street, Kwai Chung, N.T. , Hong Kong.

Tel: 852-2398-2286, Fax: 852-2789-3947

E-mail: infoasia@icon-global.com

MIDI 2010 CATALOGUE