

B1030A

Studio Monitors

- Ultra-linear studio monitor with true active design
- Precision Class A/B amplifiers with active protection circuits: 50 W for LF / 25 W for HF
- Ultra-high resolution, ferrofluid-cooled 1" dome tweeter for ultimate sound reproduction
- Long-throw 5.25" woofer with deformation-resistant Kevlar cone for ultimate bass response
- Ultimate dispersion characteristics and extremely large "sweet spot" owing to advanced wave-guide technology
- High-precision crossover network with 4th order Linkwitz-Riley filters
- Adjustable to a wide range of acoustic conditions
- Separately controlled limiter for low and high frequency overload protection
- Magnetic shielding allows placement near computer monitors
- "Planet Earth" power supply for maximum flexibility (100 - 240 V~), noise-free audio, superior transient response plus low power consumption for energy saving
- Servo-balanced inputs with XLR, ¼" and unbalanced RCA connectors
- High-quality components and exceptionally rugged construction ensure long life
- Conceived and designed by BEHRINGER Germany

behringer.com

Studio Monitor Speakers

TRUTH — High-Resolution, Active 2-Way Reference Studio Monitor with 5.25" Kevlar Woofer



Honesty

When it comes to your studio recordings, you want honesty. In fact, considering how important your art is, you should demand it! That's why we designed the new B1030A Reference Monitors to speak nothing but the TRUTH. Oh, they still sound great hooked up to your stereo or your video surround system, but they were really built with the studio in mind — where every note you play or sing is "under the microscope."

Built on a Legacy

Our TRUTH B2030A and B2031A monitors have been so wildly

successful that we've sold thousands upon thousands of them to some of the most critical ears on the planet — ears that demand the neutral sound of a true reference monitor. Ask any recording engineer and they will tell you that listening to a recording on just a single set of monitors doesn't always paint an accurate picture of the mix. Since people listen to music at home, in their cars, on mp3 players, etc., it is critical your final mix be heard on as many sizes and types of speakers as possible. That's the reason we created these smaller B1030A monitors, plus

Continued on next page



B1030A

Studio Monitors

they make ideal rear channel speakers for surround sound applications.

Years of R'n'D

For the past two years our Research and Development team has been on a mission to create the "perfect" studio monitor. Since the TRUTH B2031A had already become the industry standard, our acoustic engineers decided to start there and see just how far they could push the envelope. They tried a variety of transducers and enclosure designs, along with existing and emerging technologies. When all the dust settled, they chose to deploy an ultra-high resolution 1" dome tweeter and a long-throw 5.25" Kevlar-coned woofer in the B1030A.

Why Kevlar?

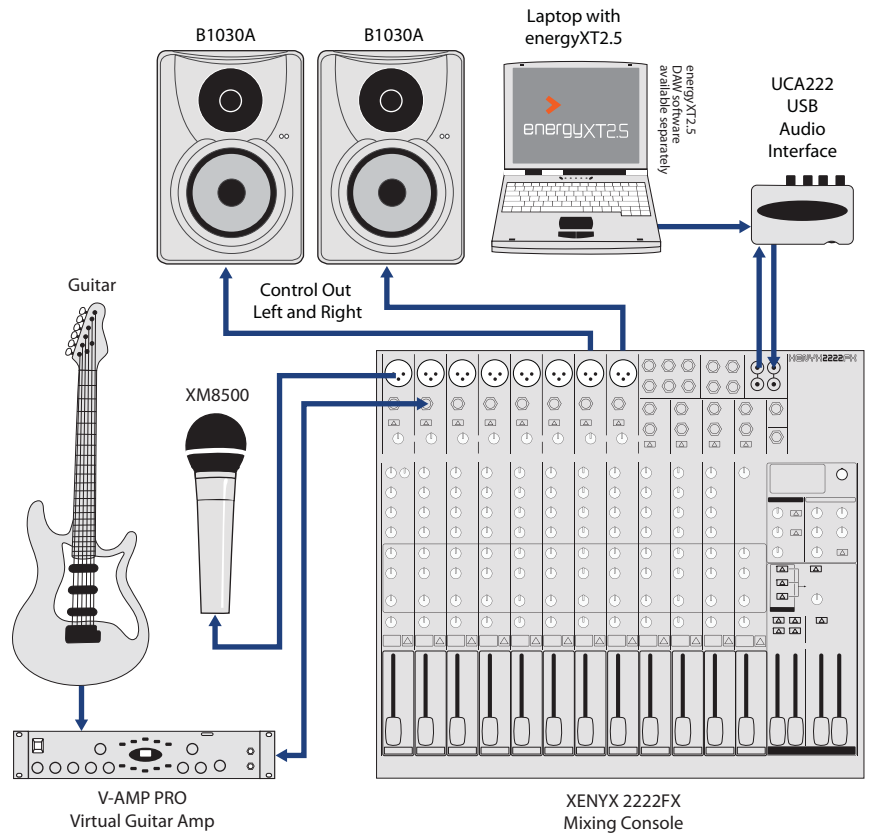
We're glad you asked. Kevlar has an incredible strength-to-weight ratio — that's one reason it's used in bulletproof vests. Kevlar gives our LF transducer the strength to handle the extremely high energy levels required for distortion-free, chest-pounding bass. And since they have such low mass, Kevlar speaker cones also respond much more quickly than those made of paper, important for not only maintaining bass content integrity, but critical for midrange accuracy and definition. Our Kevlar transducers reproduce even the subtlest nuance of the low-frequency realm without muddying the midrange.

Power to the People

It takes quite a bit more than just a "bulletproof" woofer and a high-tech tweeter stuck inside a fancy box to make a studio monitor of this class. It also takes power — and lots of it! But even more importantly, that power has to be matched to the individual high- and low-frequency transducers. While some of our competitors are content to stick whatever speakers they have on the shelf into haphazardly designed boxes and then strap on a one-size-fits-all amplifier package, we build every single component from the ground up.

We pack 75-Watts of bi-amped technology (including a time- and phase-corrected active crossover) into every B1030A, ensuring that you have the enormous power reserves you'll need to drive them really hard.

Recording



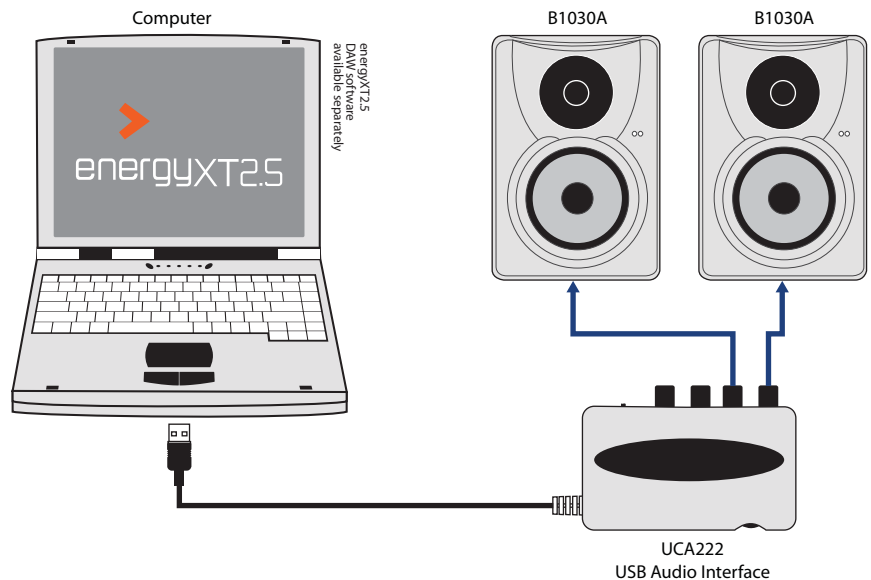
Designed to Work in Your Environment

The ideal environment for listening is a room that is "flat," neither too reflective (echoes) nor too absorptive (where the sound is muffled). But since

all rooms are not the same acoustically, all TRUTH monitors come equipped to function in a wide variety of situations. Switches are provided to adapt the monitor's low- and high-frequency

Continued on next page

Computer Monitoring

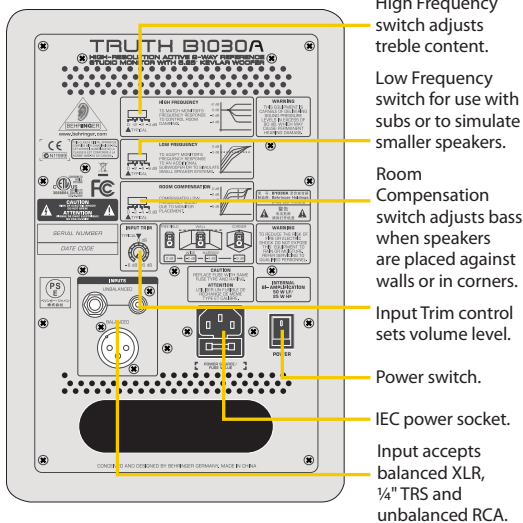
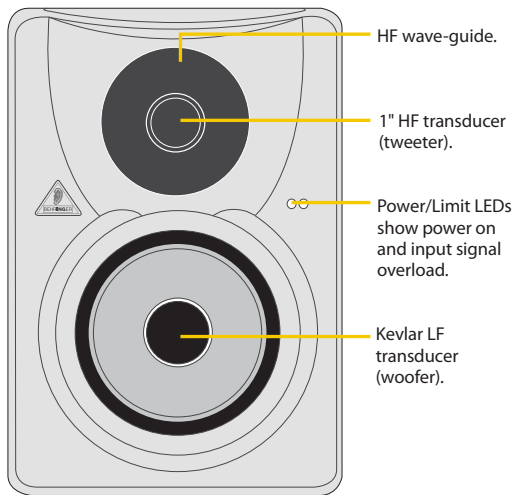


B1030A

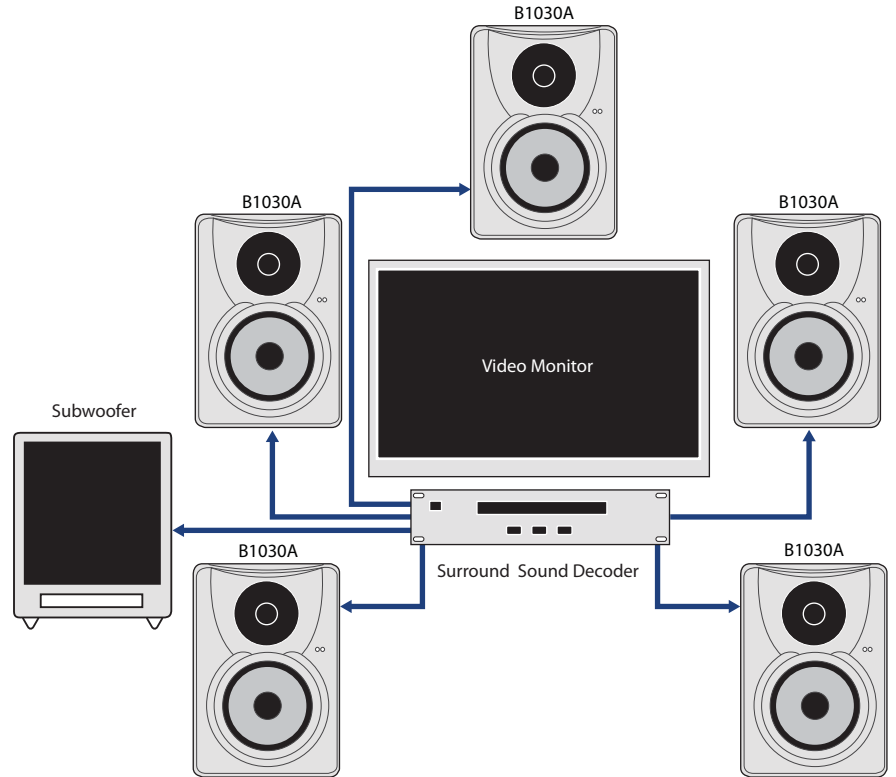
Studio Monitors

characteristics for optimal performance specific to your listening environment.

Placement is also critical. Ideally, all loudspeakers should be placed away from walls to ensure proper bass response. But fear not, B1030A monitors feature Room Compensation switches so you can place them against walls, or even in corners. Walls tend to enhance low-frequency content, and corners exaggerate bass even more, but your TRUTH monitor can be custom-tailored to provide honest bass response for your situation, with the simple flick of a switch or two.



Surround Setup



Non-fatiguing, Wide "Sweet Spot"

While some of our competitors' studio monitors have a highly focused "sweet spot" (the optimal listening position for a pair of loudspeakers), our wave-guide is designed to create a much more generous, broader listening zone. That means you won't wear a hole in the carpet in that one spot where everything sounds great. You are free to move around inside the stereo image to find the ideal spot in the mix for subtle instrument or effects placement opportunities. You also won't suffer the ravages of "monitor-fatigue-syndrome," an ailment that comes from listening to harsh high-mids and treble content for hours on end — a pretty important consideration for those all-night mix-down sessions that can really test your nerves.

What's Up with the RCA Connectors?

Yes, it is a bit unconventional to put RCA sockets on a studio monitor — but why not? Now you can connect B1030A loudspeakers

to your computer, mp3 player or television receiver for amazing sonic performance. For a truly versatile setup, use one of our USB audio interfaces (the UCA222, for example) to connect to/from your computer. This convenient setup allows you to monitor your recording projects, and mix and master them, directly from your computer. And you can place these speakers right next to your video monitor, thanks to B1030A's internal magnetic shielding.

Continued on next page



B1030A

Studio Monitors

Hearing is Believing

We could bore you to tears with all the technical jargon (if you really like that stuff, there's a special treat at the end), but hearing the TRUTH will make you a believer. From the "bulletproof"

bass of its Kevlar woofer to the silky top-end of its HF dome tweeter, we think you'll agree that nothing in this class outperforms the B1030A. Compare them to the competition and own BEHRINGER!

AUDIO INPUTS

XLR connector	servo-balanced input
¼" TRS	servo-balanced input
RCA	servo-balanced input
Input impedance	10 kΩ
Input Trim	-6 dB to +6 dB
Max. input level	+22 dBu

COMPONENTS

High-frequency driver	Ultra-high resolution 1" dome tweeter
Low-frequency driver	6 ¾" diameter Kevlar diaphragm

AMPLIFIER OUTPUT POWER

Low-frequency range

RMS @ 0.1 % THD (sine wave)	35 W @ 4 Ω
Peak power	50 W @ 4 Ω

High-frequency range

RMS @ 0.1 % THD (sine wave)	15 W @ 4 Ω
Peak power	25 W @ 4 Ω

CROSSOVER

Type	Active
Crossover frequency	4.3KHZ

SYSTEM SPECIFICATION

Frequency response	50Hz to 20kHz
Sound pressure level	max. 110dB SPL@1m(pair)
Low Frequency	0 dB @ 60 Hz
	-2 dB @ 60 Hz
	-4 dB @ 60 Hz
	-6 dB @ 60 Hz
Room Compensation	0 dB @ 300 Hz
	-2 dB @ 300 Hz
	-4 dB @ 300 Hz
	-6 dB @ 300 Hz
High Frequency	+2 dB @ 8 kHz
	0 dB @ 8 kHz
	-2 dB @ 8 kHz
	-4 dB @ 8 kHz

POWER SUPPLY

Voltage/Fuses	
90 - 254 V~, 50/60 Hz	T 1.6 A H 250 V

Power consumption

B1030A	100 W
--------	-------

Current consumption

100 - 120 V~, 50/60 Hz	max. 1.0 A
220 - 230 V~, 50/60 Hz	max. 0.5 A

Mains connection

B1030A	Standard IEC connector
--------	------------------------

DIMENSIONS/WEIGHT

Dimensions (HxWxD)	288mm x 198mm x 280mm
Weight	5.5 kg

BEHRINGER is constantly striving to maintain the highest professional standards. As a result of these efforts, modifications may be made from time to time to existing products without prior notice. Specifications and appearance may differ from those listed or illustrated.

For service, support or more information contact the BEHRINGER location nearest you:

BEHRINGER Australia tel.: +61 3 9877 7170, fax: +61 3 9877 7870 **BEHRINGER Germany** tel.: +49 21 54 9206 4149, fax: +49 21 54 9206 4199 **BEHRINGER Japan** tel.: +81 3 5281 1180, fax: +81 3 5281 1181 **BEHRINGER Singapore** tel.: +65 5845 1800, fax: +65 6214 0275 **BEHRINGER USA / CANADA** tel.: +1 425 672 0816, fax: +1 425 673 7647

behringer.com

