

APart  **AUDIO**
INSTALLED SOUND SOLUTIONS

2011



Affordable quality audio solutions create possibilities !

APart products are very competitively priced. These prices give APart installers a stronger position in a competitive market.

But what's more : we give you the opportunity to deliver an even better project. Because prices are always under pressure, many installers do not allow for some extra power reserve in their sound system. sometimes none at all. This may result in a competitive offer, but sadly also in a sound system that does not perform well. APart allows you to count in that extra headroom and install those extra speakers for better sound coverage.

Hi-Fi and consumer audio is not designed for pro-applications !

Are you also sick and tired of having to install an unreliable consumer hifi system instead of the professional solution you really wanted? (The one your customer saw at the electronics megastore for half the price?) In the next pages you will discover professional solutions for a price that can compete with consumer material.

Discover it now: the combination of APart quality products and attractive pricing allows you to offer, and deliver the project you really had in mind!

INTRODUCTION

Page 2

PNP GUIDE

Page 4

SOLUTIONS

Page 6

LOUDSPEAKERS

Page 17

ELECTRONICS

Page 49

ACCESSORIES INSTALLER TOOLS VOLUME CONTROL PAGING MICROPHONES

Page 75

LOUDSPEAKER COMPARISON TABLE AMPLIFIER COMPARISON TABLE

Page 80

INDEX

Page 84

Introduction





Welcome to the 2011 APart catalogue,

Regular readers will notice some changes to this version of our catalogue. In the front section of this book you will find a full chapter of ready to use solutions, put together especially to cover the projects you encounter most often.

A series of sets for use in shops, meeting rooms, bars, restaurants,...

This really is the stop and go part of the catalogue. It is a place to quickly find the quality sound you're looking for, without having to spend time matching the specifications of individual products.

We proudly present CHAMP-3D: a 3-channel, fully programmable digital amplifier.

It has all the same advantages as the other models in our series of convection cooled amplifiers and much more: a built-in DSP, a fully parametric 4-band equalizer and RS-232 control of all essential functions. Discover it in the electronics section of this catalogue.

Further we introduce the CM4: a discrete and elegant 4" low impedance speaker.

It's equipped with a back can, especially for use in strip- or perforated tile ceilings.

There is also the new bi-directional MPBD20-G sound projector and the SM-series; a range of budget-friendly and functional cabinet speakers. Two new wall control panels allow wired remote control of the SDQ5PIR. And finally, we are publishing GLL files of our complete loudspeaker range for use in the EASE acoustical modeling software.

We invite you to come and discover our new products at our booths at Integrated Systems Europe in Amsterdam, Pro Light+Sound in Frankfurt, Palme Dubai and other tradeshows in the course of 2011. And find out all about exiting APart projects from across the world on the realizations pages of our website www.apart-audio.com!

The APart team



Get your head out of the box, and discover how APart can drive your business. Start using our unique plugNplay guide! 100 pages of practical installed audio information : FAQ about installing audio, a comprehensive index to help you find the most appropriate example for your project and more than 40 case studies where we explain which audio installation works best for your project. We walk you through the set-up, explain which speakers to use at what power setting, which electronics to use and how to wire the system. The guide will help you with installations, and will make you win projects you've always considered out of reach. Ask your APart distributor for it now!

Production hall

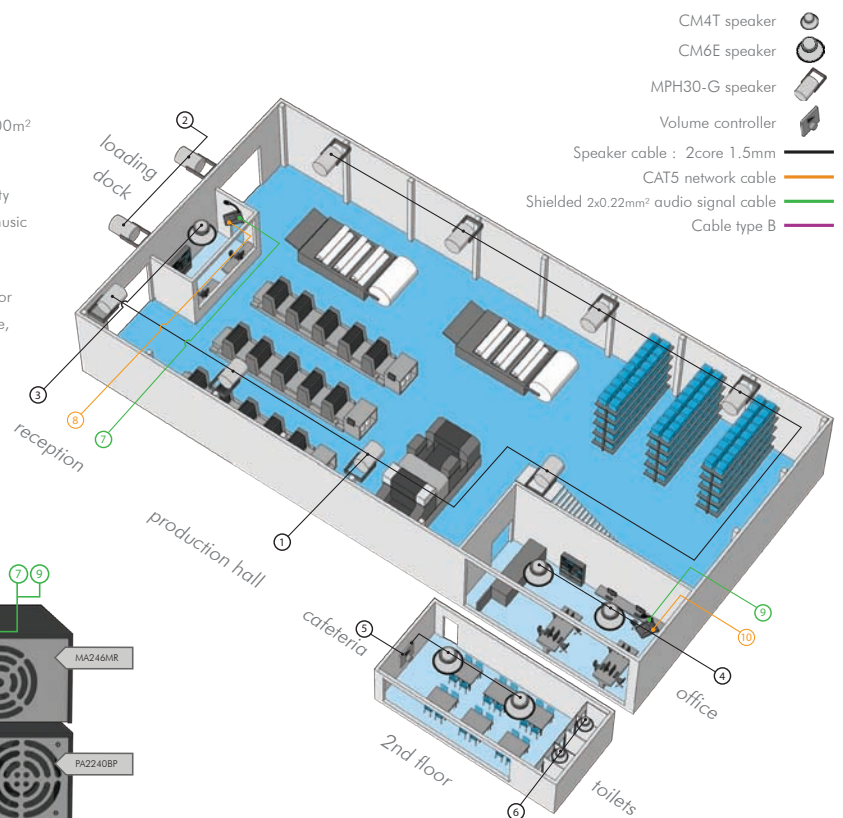
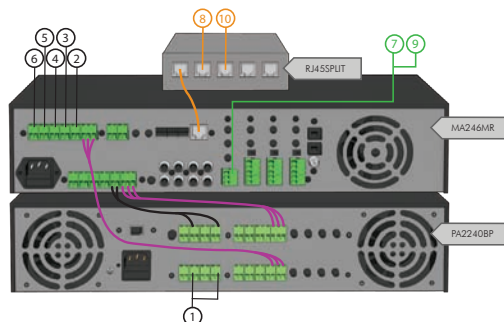
Area : 850m² - 1400m²

Situation

- Production hall, offices, cafeteria, loading dock : 1000m²

Customer requests

- One system versatile enough to cover the entire facility
- Powerful enough to ensure clarity of messages and music even in a noisy production area
- Outdoor speakers weatherproof and rustfree
- Speakers in the office stylish and fitting with the interior
- Different music in production area compared to office, loading dock, cafeteria and toilets
- Independent volume control for offices, reception, production, cafeteria and loading dock





SPEAKER CHOICE STEP ONE

- CM4T : 4.2" ceiling speaker
- CM6E : 6.5" ceiling speaker
- MPH30-G : horn loaded sound projector

Zone	Surface in m ²	Speakers	Speaker power setting	Colour
production hall	600-1000m ²	8 x MPH30-G	30 Watts	●
loading dock	150-250m ²	2 x MPH30-G	30 Watts	●
reception	15-30m ²	1 x CM6E	6 Watts	○ ● ●
office	30-60m ²	2 x CM6E	6 Watts	○ ● ●
cafeteria	30-60m ²	2 x CM6E + E-VOL40	6 Watts	○ ● ●
toilets	20-40m ²	2 x CM4T	3 Watts	○ ● ●

Is the project you are working on bigger than the production hall in this example?
Check the other case studies in the corporate section of this book, or contact your APart dealer.
He will help you to work out a project that exactly fits your clients requirements.



ELECTRONICS CHOICE STEP TWO

- MA246MR : 100 Volts mixing amplifier with radio & CD/MP3 player
- MICPAT-6 : selective 6-zone paging microphone
- RJ45SPLIT : to connect multiple paging microphones
- PA2240BP : 2 x 240W / 100V amplifier
- E-VOL40 : 100 Volts volume controller

Max. total power consumption of this installation : 1000 Watts



Production hall , Small factory , ...

Corporate

SOLUTIONS

Partying on the dance floor, meeting friends in a bar, or enjoying a classy dinner in a restaurant? Whether it is background music in a trendy boutique or a presentation in a meeting room, quality sound is an essential part of the experience. For exactly those situations, APart offers a full range of sets. All of them are combinations of products designed to be used together!

SHOPSET
Page 8

MEETINGSET
Page 9

AMBISET
Page 10

BISTROSET
Page 11

LOUNGESET
Page 12

SWINGSET
Page 13

BARSET
Page 14

PUBSET
Page 15

Stop and Go

This chapter of the catalogue comes first because it is meant to make life easy for you. It contains a full line up of sets. They always consist of an amplifier, the matching speakers and subwoofers. They'll make you obtain the quality sound you're looking for, without having to spend time matching the specifications of individual products.

All engineering of the sets guarantee a perfect 24/7 reliability.

Obviously, an APart set is always more advantageous than buying the products individually.

It is simple and convenient too: you'll receive all the products together in one box or one pallet.

We've selected eight of the most common product applications and designed the matching set for them.

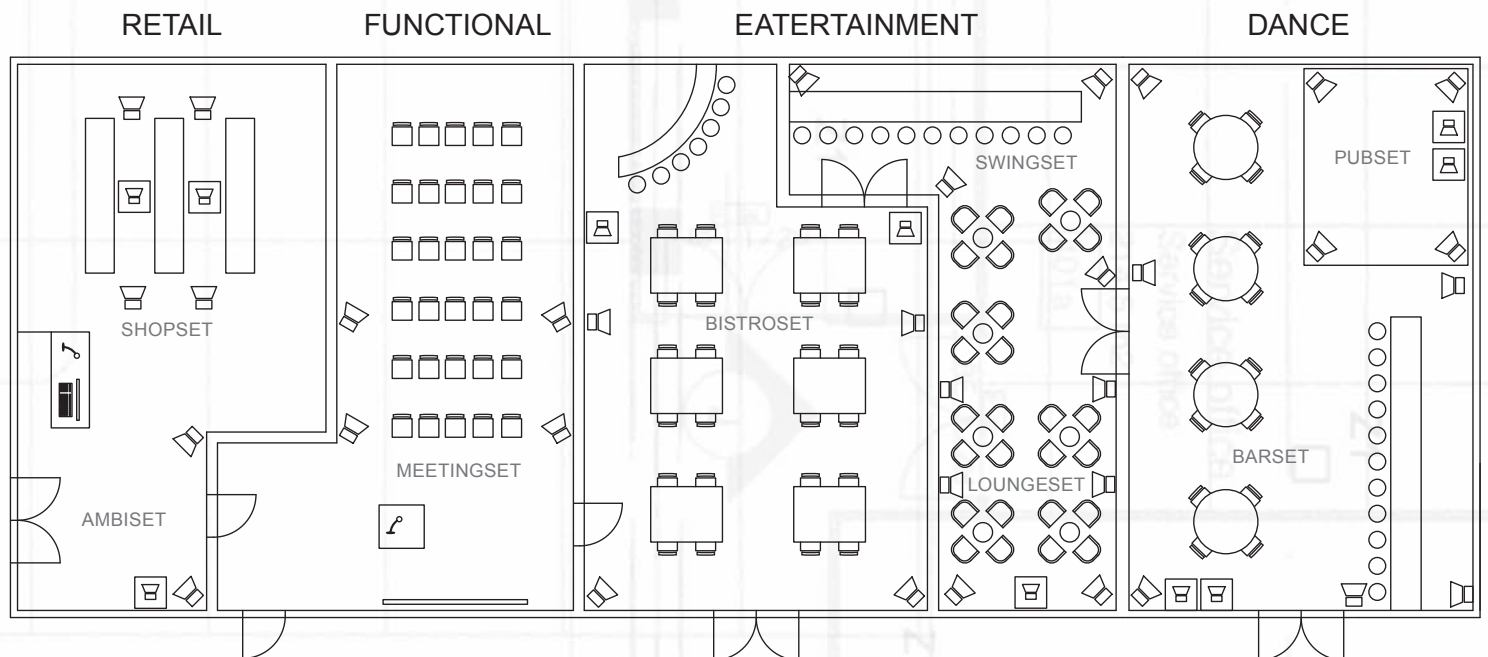
Depending on the application and the desired sound level, you decide which solution fits best to your project.

No complicated product comparisons, no lengthy studying of spec sheets: this really is the stop and go area of our catalogue!

Soft & dispersed

Volume

Loud & concentrated



Details of the specified products can be found elsewhere in this catalogue : please consult the following pages of this chapter or the index at the back of the catalogue.

Shopset

This set is the ideal ceiling speaker and amplifier solution for background music in small retail, professional or residential environments.

SHOPSET's CM4 build-in speakers fit discretely in every interior and design style. This solution is available in two versions: with an on-wall SUBLIME subwoofer or a discrete CMSUB8 ceiling subwoofer-especially for those situations where design or architecture does not allow an on-wall subwoofer. The CONCEPT1 amplifier has all the professional features like lockable user and installer settings, RS-232 or paging possibilities.



SHOPSET1 BUILD-IN



For use in shops, boutiques, mini-mart, hair stylist, art gallery, waiting room,...

- 4 x CM4 top speakers
- 2 x CMSUB8 subwoofer
- 1 x CONCEPT1 integrated amplifier

SHOPSET0 ON-WALL



For use in shops, boutiques, mini-mart, hair stylist, art gallery, waiting room,...

- 4 x CM4 top speakers
- 1 x SUBLIME-W subwoofer
- 1 x CONCEPT1 integrated amplifier

APart CM4 loudspeakers are equipped with a back can. This makes them especially suitable for strip ceilings or ceilings with perforated tiles. The back can prevents that the air displaced by the speaker cone 'escapes' through the gaps or perforations in the ceiling. The result is a much better sound quality.

Meetingset

is the set of choice for use in meeting rooms, board rooms, small places of worship,... and all other small to medium sized venues where you need a professional audio system for audio playback and crystal clear voice reproduction. The MASK6 speakers bring unequalled sound quality, while CONCEPT1 is an integrated amplifier with full professional features like lockable user and installer settings, RS232 control and a MIC input that can be mixed with line inputs.



MEETING SET



1 x CONCEPT1 integrated amplifier
4 x MASK6 speakers
2 x MASKL fixation brackets sets

- MEETING160-BL : with black top speakers
- MEETING160-W : with white top speakers

Ambiset

The AMBISET is the cabinet speaker solution of choice to provide background music in residential, small professional and retail environments. The two MASK2 satellite speakers offer a combination of great looks and superb sound, while the SUBLIME subwoofer is easy to hide behind a curtain or under a closet. It completes the sound with a rich, full bass.



AMBI SET



Especially for use in small residential or commercial areas: living room, waiting room, shop, boutique, art gallery, hair stylist, travel agency,...

For venues that need a 24/7 reliable system that offers a combination of stunning sound, great looks and professional extras like paging or RS-232 control.

- 2 x MASK2 top speakers
- 1 x SUBLIME subwoofer
- 1 x CONCEPT1 integrated amplifier

- AMBISET-BL : with black speakers & black subwoofer
- AMBISET-W : with white speakers & white subwoofer

Bistroset

If you are looking for full, rich background music in a small café, tearoom, ice cream parlor,... BISTROSET is the sound solution you need.

The APart CHAMP3D amplifier is the heart of this system. Its 'no-fan' convection cooling guarantees totally silent operation, while the lockable front panel makes sure that no one tampers with your settings. Four MASK4 speakers fit in any interior style, and are completed with two discrete but powerful on-wall SUBTILE subwoofers.



BISTRO SET



Thanks to the very small top speakers that are easy to hide to place discretely, this set is especially recommended for use in retail areas: gas station shop, hair stylist, boutique, travel agency, minimart, art gallery,...

For venues that need a 24/7 reliable system for background music, with paging possibilities.

4 x MASK4 top speakers
2 x SUBTILE subwoofer
1 x CHAMP-3D

- BISTROSET-BL : with black speakers & black subwoofers
- BISTROSET-W : with white speakers & white subwoofers

Loungeset

If you're looking for a sound system to take care of rich background music in lounge bars, restaurants,.. with just that little bit of extra headroom for the occasional party, LOUNGESET is the right choice for you.

Six MASK4T cabinet speakers take care of an optimum sound dispersion and a powerful SUB2201 add that extra bass punch. The versatile convection cooled CHAMP3D amplifier is completely lockable, and absolutely silent.



LOUNGE SET



Bars, cafés and restaurants are hostile environments for electronic equipment. The air is often full of dust, grease or cigarette smoke. APart's CHAMP series is built especially to work in such conditions. CHAMP-3D has no cooling fan, thus eliminating the need of regular cleaning and avoiding amplifier failure as a result of a clogged up fan.

- 6 x MASK4T top speakers
- 1 x SUB2201 subwoofer
- 1 x CHAMP-3D amplifier

- LOUNGESET-BL: with black speakers & subwoofer
- LOUNGESET-W: with white speakers & subwoofer

Swingset

is the perfect fit for venues where music is the key element, from ambiance to dance level. This combination is designed for situations where you want powerful music without having to place subwoofer cabinets. It's ideal for music bars, sport bars, dancefloor areas, gaming arcades, trendy fashion stores... Four powerful MASK8F two way speakers take care of amazing sound quality, while the convection cooled CHAMP-ONE amplifier guarantees perfect musical reproduction and 24/7 reliability, even in the most demanding environments.



SWING
SET



CHAMP-ONE is at the heart of this system. This audiophile amplifier is convection cooled. Because it has no fan, the amplifier is absolutely noise-free. It does not have dust or grease problems and does not need regular cleaning procedures. CHAMP-ONE takes care of pure musical quality in combination with high power and a powerful, dynamic punch. The APC Automatic Power Control function protect the speakers and assures the best musical experience.

4 x MASK8F full range speakers
1 x CHAMP-ONE amplifier

- SWINGSET-BL: with black speakers
- SWINGSET-W: with white speakers

Barset

Get the party started! BARSET is a winning combination of sound, performance and reliability. This set brings grooves to every bar or venues where you want to play music at ambient, party, or dance level. Six MASK6T speakers deliver crystal clear high and mid tones, while two SUB2201 subwoofers take care of powerful bass reproduction. The versatile CHAMP-3D amplifier has a built-in DSP with 3 operation levels. Thanks to its unique 'no-fan' design, it is insensitive to dust, grease or smoke.



BAR SET



Superior sound quality with the CHAMP-3D, a 3-channel, fully programmable digital amplifier. With the same advantages as the other models in APart's series of convection cooled amplifiers and much more: a built-in DSP, a fully parametric 4-band equalizer and RS-232 control of all essential functions. There are genuine Hypex amplifier modules at the core of the unit for a superior sound quality.

The CHAMP3-D amplifier has 3 operation levels :

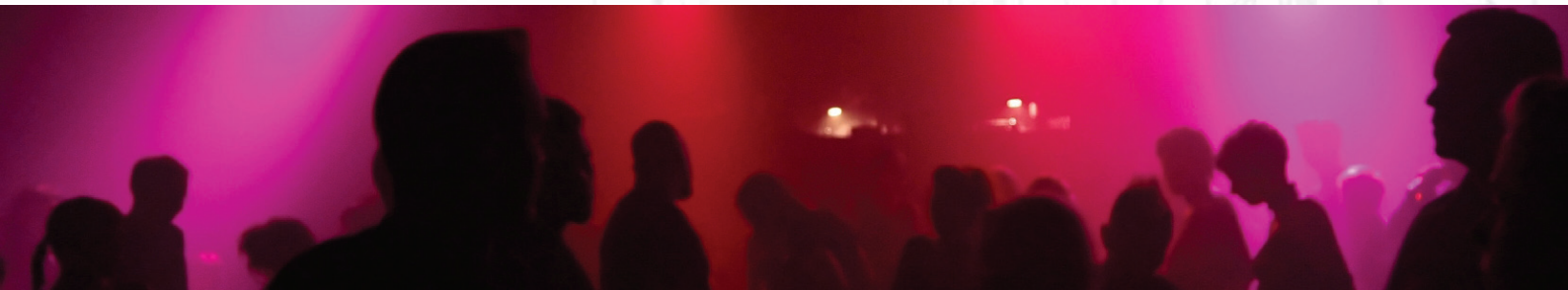
- Fully locked: the amplifier can only be switched ON/OFF
- Volume only: only the volume can be changed, all other settings are locked
- Accessible : all DSP parameters can be set

6 x MASK6T top speakers
2 x SUB2201 subwoofer
1 x CHAMP-3D amplifier

- BARSET-BL: with black top speakers and subwoofer
- BARSET-W: with white top speakers and subwoofer

Pubset

The legendary APart PUBSET is now powered by the digital CHAMP3-D amplifier. The unit has a DSP and because of the fanless convection cooling it is insensitive to dust, grease or smoke. This is the ultimate set for dance floor applications, dance cafés or flashy fashion flagship stores. The unequalled MASK8 speakers bring crystal clear high and mid tones, the powerful kick basses make you stop in your tracks and wonder....



PUB
SET



CHAMP-3D comes out of the box ready for plug and play use with PUBSET. It will get you started in no time. Take a look at what is under the cover: this amplifier has a built-in DSP with an extensive limiter, delay, full parametric 4-band equalizer, compressor and subsonic filter. It can be operated in 3 modes: fully locked, volume only or with all DSP functions fully accessible. Install it plug and play where possible; tweak it to the project's needs whenever required!

4 x MASK8 top speakers
2 x SUB2400 subwoofer
1 x CHAMP-3D amplifier

- PUBSET-BL: with black top speakers and subwoofers
- PUBSET-W: with white top speakers and subwoofers



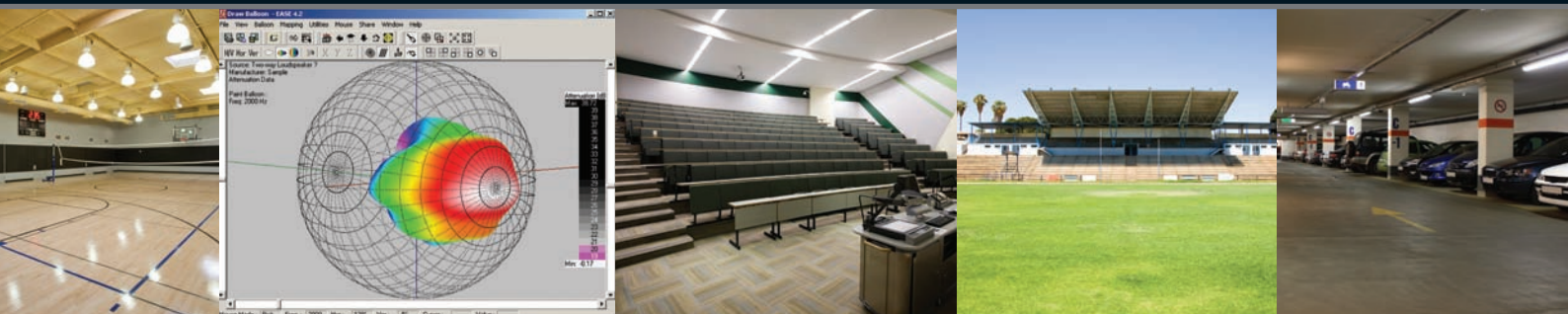
Enhanced Acoustic Simulator for Engineers

In order to allow industry professionals to simulate and predict interaction of APart speakers with the acoustics of rooms, APart has released high resolution data of all its loudspeakers in the GLL format. (Generic Loudspeaker Library). These data files can be used in EASE, an acoustic simulation software program that provides sound system designers a tool to predict the performance of a sound system in a specific venue.

The availability of this data is the result of a measuring program in Dr. Anselm Goertz' certified acoustic testing lab in Germany. Because of the effort and cost that go with such extensive measuring, most brands only publish data for parts of their range. APart wants to support installers, consultancies and has therefore decided to have its entire loudspeaker range tested!

EASE has an extensive library of speakers by major manufacturers. APart is now part of this select group. The software offers detailed realistic modeling and simulation of venue acoustics and sound system performance simulation. It is possible to make a 3-D model of a room, select materials for floor, walls,... position speakers within this room and visually simulate how sound will behave within the room.

GLL data of our loudspeakers are freely available for registered APart dealers on our website www.apart-audio.com. CLF data files for Ulysses®, Cat-Acoustic®, Lara®, Odeon®, Ramsete® and other acoustic modeling software are available on request.



MUSIC & DESIGN



CEILING SERIES

Page 18-23



IN-WALL SERIES

Page 25-27



MASK DESIGN SERIES

Page 29-34



SUB SERIES

Page 35-36



SDQ CABINET SERIES

Page 38-41



FUNCTIONAL CABINET

Page 42



SPECIALS

Page 43

SPEECH & FUNCTIONALITY



OUTDOOR MUSIC SERIES

Page 44



OUTDOOR PAGING SERIES

Page 45



SOUND COLUMN SERIES

Page 46-47

LOUDSPEAKERS

Size

does matter! The smallest models in our speaker range are ideal for use in restrooms, cloakrooms, quiet areas or discrete interiors. Both CM3T and CM4T are equipped with a transformer, so you can use these speakers perfectly in all your professional 100 Volt sound systems.

3" METAL MINI

- CM3T • CM3T-BL • CM3T-SLV 
- Halogen spot size, bright sound
- 3" full range speaker
- 6 - 3 - 1.5 Watts 100 V
- 20 Watts @ 16 Ohm
- PAINTCMM (option: any RAL colour)
- Dimensions: 105 (outside Ø), 82 (cutout Ø), 70 (d) mm



4" METAL MIDI

- CM4T • CM4T-BL • CM4T-SLV 
- Perfect match of size and sound
- Surprising quality for a 4"
- 6 - 3 - 1.5 Watts 100 V transformer
- 30 Watts @ 16Ω
- PAINTCMM (option: any RAL colour)
- Dimensions: 135 (outside Ø), 105 (cutout Ø), 74 (d) mm



Cunning

These back-can equipped speakers have distinct applications within APart's range. CM4 is a discrete 4" low-impedance speaker which is ideal in combination with a CMSUB8 ceiling subwoofer, and is designed especially for use in perforated ceilings or strip ceilings. CM6SF is protected by a metal fire dome and is your speaker of choice for voice evacuation purposes.

QUALITY SOUND
METAL



•CM4

- An ideal combination of discrete installation and quality sound
- 30 Watts @ 16 Ohm – up to 4 speakers in parallel on a 4 Ohm amplifier
- High efficiency full range loudspeaker, high pass filter for use with CMSUB8
- Metal back guarantees constant sound quality: ideal for use in strip ceilings or perforated tiles
- Easy and quick mounting with 2 spring clamps
- Ideal for combination with CMSUB8 or SUBLIME subwoofer
- PAINTCCM: option – any RAL color
- Dimensions: 135 (outside Ø), 105 (cutout Ø), 100 (d) mm

CM6SF
METAL



•CM6SF

- Safety first ... : voice evacuation alarms
- Compliant to the EN60849 regulation
- Steel firedome included
- 6.5" dual cone woofer
- 6 - 3 - 1.5 Watts 100 Volt transformer
- PAINTCM (option: any RAL colour)
- Dimensions: 217 (Outside Ø) , 205 (Cutout Ø) , 148 (d) mm

Easygoing

APart's dual cone speakers won't let you down. The CM6E is standard available in white, black and silver and can be used in any décor and style. The CM5E and CM6E are particularly suitable for voice applications and assure constant quality while keeping your budget in check. The CM6SF is protected by a metal fire dome and is your speaker of choice for voice evacuation purposes.

6.5" DUAL-CONE ELEGANCE



•CM6E •CM6E-BL •CM6E-SLV



- Start with elegance...
- 6.5" dual cone speaker
- 6 - 3 - 1.5 Watts 100 V transformer
- PAINTCM (option : any RAL colour)
- Dimensions : 205 (Outside Ø), 183(cutout Ø), 70 mm(depth)

5" DUAL-CONE BUDGET SOLUTION



•CM5E

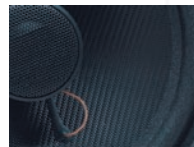


- Probably the most affordable in the world
- 5" dual cone speaker
- 6 - 3 Watts 100 V transformer
- Quick fit via 2 spring clamps
- PAINTCM (option : any RAL colour)
- Dimensions : 178(outside Ø), 160(cutoutØ), 53 mm(depth)

Heart & Soul

These 6.5" two way ceiling speakers bring HiFi quality sound to every imaginable setting. They have a stylish design and are now available in silver and black, which makes them fit into any interior or architect's project. Aluminium grills allow applications in humid environment.

6.5" TWO-WAY
REFERENCE



• BL

• SLV

•CM608 •CM608-BL •CM608-SLV

- The everlasting contractor's standard
- 6.5" enforced PP woofer, 1" tweeter
- 60 Watts program power @ 8Ω
- PAINTCM (option:any RAL colour)
- Dimensions: 205 (Outside Ø) , 183 (Cutout Ø), 80 (d) mm

•CM6T 

- The contractor's reference
- 6.5" enforced PP woofer, 1" Tweeter
- 60 Watts program power @ 16Ω
- 6 - 3 - 1.5 Watts 100 Volt transformer
- PAINTCM (option:any RAL colour)
- Dimensions: 205 (Outside Ø) , 183 (Cutout Ø), 80 (d) mm

•CM20T •CM20T-BL •CM20T-SLV



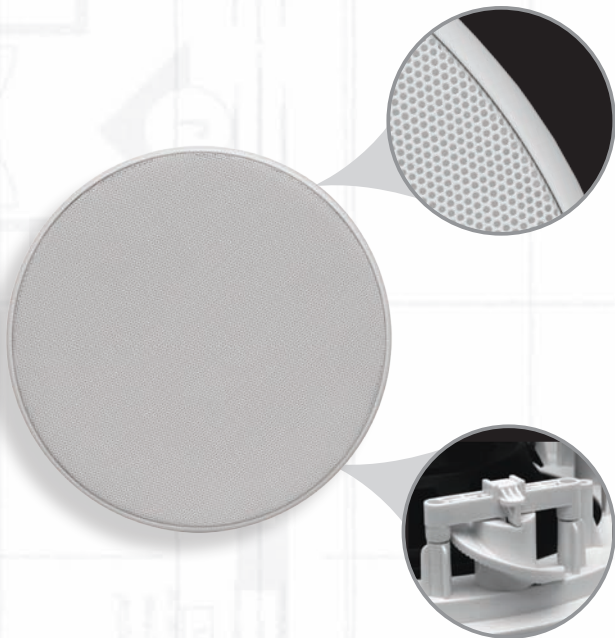
- Just that little extra ...Power!
- 6.5" enforced PP woofer, 1" tweeter
- 60 Watts program power @ 16Ω
- 20 - 10 - 5 - 2.5 Watts 100 Volt transformer
- PAINTCM (option:any RAL colour)
- Dimensions: 205 (Outside Ø) , 183 (Cutout Ø), 80 (d) mm

•CMBB

- The CMBB can be used as an on-wall or in-wall back-box for the APart build-in speakers CM6T, CM6E, CM20T & CM608
- The conical shape of the CMBB guarantees a perfect fit into a concrete or brick wall or ceiling
- PAINTCM (option:any ral colour)
- Dimensions: 230 (Outside Ø) , 80 (h) mm


Speed Record You've never installed ceiling speakers faster than the CM6QFT. This 6.5" ceiling speaker is equipped with the Quick Fit System that makes installing a large amount of ceiling speakers a piece of cake. No more fumbling with mounting screws and screw drivers on top of your ladder: count on APart for products that make an installers' life easier.

6.5" TWO-WAY
SPEED RECORD



- Thanks to its sleek, flat looks and ultrathin edge, this ceiling speaker can seamlessly be integrated into any interior.

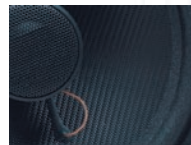
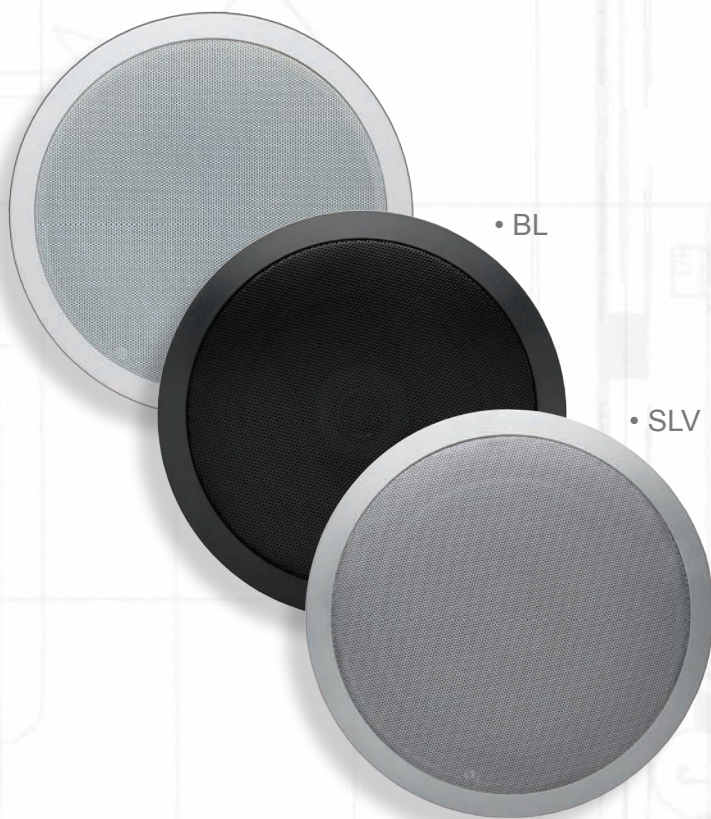
- The patented Quick Fit System allows easy installing. Connect the cabling, place the speaker in the cutout and push the clamp releases. It's as easy as that, a matter of seconds.

- CM6QFT 
- The new contractor's reference
- The patented Quick Fit System reduces install labor drastically
- Fits most ceilings 12,5 - 29mm thick
- 6.5" low-distortion paper cone woofer, 1" tweeter
- 6-3-1.5 Watts 100 Volt transformer
- 40 Watts program power @ 16 Ohm
- Strong metal grille
- PAINTCM (option: any RAL color)
- Dimensions: 237 (Outside Ø) , 216 (Cutout Ø), 65 (d) mm

High Profile

: this series of ceiling speakers bring background music to a level of perfection. The eight inch 2-way CM1008 and CMX20T offer a perfectly balanced sound, completed by the deep basses of the CMSUB. With exactly the same look as the ceiling speakers, this build-in subwoofer offers the ideal solution for situations where the interior design does not allow the use of cabinet subwoofers.

8" TWO-WAY PERFECTION



•CM1008

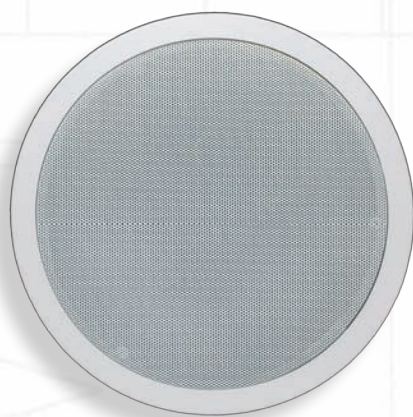
- Perfectly balanced full spectrum sound
- 8" enforced PP woofer, 1" tweeter
- 100 Watts program power @ 8Ω
- PAINTCM (option:any RAL colour)
- Dimensions: 244 (Outside Ø) , 220 (Cutout Ø), 90 (d) mm

•CMX20T •CMX20T-BL •CMX20T-SLV

- When top quality does matter...
- 8" enforced PP woofer, 1" tweeter
- 100 Watts program power @ 16Ω
- 20 - 10 - 5 - 2.5 Watts 100 Volt transformer
- PAINTCM (option:any RAL colour)
- Dimensions: 244 (Outside Ø) , 220 (Cutout Ø), 90 (d) mm



CMSUB8 BUILD-IN SUBWOOFER



•CMSUB8

- 8" built-in stereo subwoofer (dual coil)
- Discrete, stylish and inconspicuous design
- Passive X-over filter incorporated
- Ideal with compact cabinet speakers and small ceiling speakers
- Active configuration: ideal with CHAMP4 amplifier
- Can be used in humid places
- 2 x 80 Watts program power @ 8 Ohm
- Dimensions : 246 mm diameter x 106 mm depth
- Cutout diameter : 226 mm



Breathe the atmosphere: 5.1 surround with a white-knuckle movie, a quality sound in your meeting room or showroom that matches your company's image, trendy background beats in the hippest location or your favorite band in your own living room: high quality sound can add so much to the experience. APart's range of hi-end Kevlar speakers stands for enjoyment!

Style & Quality

meet in the CMRQ Kevlar speakers. These in-wall speakers bring crystal clear high notes and powerful deep basses that will astound the most demanding audience. Hi-end stereo enjoyment and stunning 5.1 sensations in the home environment, or ultra-discreet quality background music in a public building. And, with their tight, flat design the CMRQ speakers are the perfect match for a wall mounted flat screen, and seamlessly fit into the most exclusive interior designs.

CMRQ108 EXPERIENCE



• CMRQ108

- Enjoy the best musical experience a wall speaker can deliver
- Top quality 6.5" woofer with Kevlar Dupont® cone
- Pivotal silk dome tweeter, very low distortion
- Built-in crossover with HF tone control
- 120-Watts program power
- 8 ohm, selectable to 12 ohm
- PAINTCM (option: any RAL colour)
- Dim. (outside): 296 (h) x 196 (w) mm
- Cutout: 272(h) x 172(w) x 78(d) mm



• CMRQ108BBI

- Backbox for IN-WALL mounting
- Dim. (outside): 351 (h) x 251 (w) x 90 (d) mm

CMRQ108C CENTER



• CMRQ108C

- Hi-end center speaker for home theatre use
- Attractive design for other use as well
- Precisely engineered for clear voice reproduction
- Dual 5.3" woofers with Kevlar Dupont® cone
- Silk dome tweeter guarantees crystal clear sound
- Built-in crossover with HF tone control
- 100 Watts program power @ 8 ohm
- PAINTCM (option: any RAL colour)
- Dimensions (outside): 176 (h) x 346 (w) mm
- Cutout: 153 (h) x 323 (w) x 69 (d) mm



• CMRQ108CBBI

- Backbox for IN-WALL mounting
- Dim. (outside): 221 (h) x 402 (w) x 90 (d) mm

Distinct

: The design and sound quality of our range of square speakers will win the heart of every sound loving interior designer. The lineup has now been completed with two new discrete 5" speakers in low impedance and 100 V. These speakers can be integrated with any interior style, whether it is a family room, bathroom or small office.

5" TWO WAY SQUARE



•CMS508

- Compact, stylish and powerful...
- 2 way : HiFi 5" enforced woofer, 1" tweeter
- 50 Watts program power @ 8Ω
- PAINTCM: (option) any RAL colour
- Dim. (outside): 171(h) x 171(w) x 54(d)mm
- Cutout: 145 mm x 145 mm

•CMS5BBI



- Backbox for IN-WALL mounting
- Dim. (outside): 221 (h) x 221 (w) x 90 (d) mm

•CMS15T



- Small format to fit discretely into any interior
- 2 way : HiFi 5" enforced woofer, 1" tweeter
- 50 Watts program power @ 16 Ohm
- 15 - 10 - 5 - 2.5 W - 100 V transformer
- PAINTCM option: any RAL colour
- Dim. (outside): 171(h) x 171(w) x 61(d)mm
- Cutout: 145 mm x 145 mm

6.5" TWO WAY SQUARE



•CMS608

- Great shapes ..., quality sound
- 6.5" enforced woofer, 1" tweeter
- 60 Watts program power @ 8Ω
- PAINTCM (option: any RAL colour)
- Dim. (outside): 201(h) x 201(w) x 75(d)mm
- Cutout : 176 x 176mm

•CMS6BBI



- Backbox for IN-WALL mounting
- Dim. (outside): 251 (h) x 251 (w) x 90 (d) mm

•CMS20T

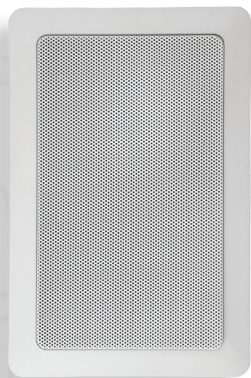


- Looks good..., sounds great !
- 6.5" enforced woofer, 1" tweeter
- 60 Watts program power @ 16Ω
- 20 - 10 - 5 - 2.5 Watts 100 Volt transformer
- PAINTCM (option: any RAL colour)
- Dim. (outside): 201(h) x 201(w) x 75(d)mm
- Cutout : 176 x 176mm

Design

driven by reason creates power : meet APart's range of rectangular in-wall speakers. The new 4" CMR15T combines an outstanding sound quality with a distinguished look, while three 5" speakers make sure you have the right alternative for even the most challenging project.

4" RECTANGULAR



• CMR15T

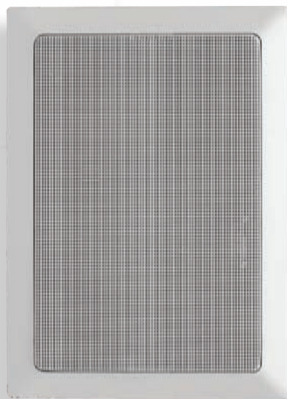
- Quality sound by a small and elegant design
- 4" enforced woofer, 1" tweeter
- 60 W program power @ 16Ω
- 15 - 10 - 5 - 2.5 Watts 100 V transformer
- PAINTCM option: any RAL colour
- Dim. (outside): 220(h) x 147(w) x 60(d) mm
- Cutout: 192(h) x 118(w) mm



• CMR4BBI

- Backbox for IN-WALL mounting
- Dim. (outside): 301 (h) x 221 (w) x 90 (d) mm

5" RECTANGULAR



• CMR608

- Quality sound in style ...
- 5" enforced woofer, 1" tweeter
- 60 Watts program power @ 8Ω
- PAINTCM (option: any RAL colour)
- Dim. (outside): 237(h) x 170(w) x 65(d) mm
- Cutout : 210(h) x 143(w) mm

• CMR5

- The essentials
- 5" dual cone woofer
- 6 - 3 - 1.5 Watts 100 Volt transformer
- PAINTCM (option: any RAL colour)
- Dim. (outside): 237(h) x 170(w) x 65(d) mm
- Cutout : 210(h) x 143(w) mm

• CMR20T

- When sound meets design ...
- 5" enforced woofer, 1" tweeter
- 60 Watts program power @ 16Ω
- 20 - 10 - 5 - 2.5 Watts 100 Volt
- PAINTCM (option: any RAL colour)
- Dim. (outside): 237(h) x 170(w) x 65(d) mm
- Cutout : 210(h) x 143(w) mm

• CMRBB

- With the CMRBB on-wall back-box you can change a 5" CMR-build-in type into a cabinet speaker.
- PAINTCAB6 (option: any ral colour)
- Dim. 235(h) x 167(w) x 85(d)



• CMRBBI

- CMRBBI is used to build-in rectangular APart 5" CMR-Loudspeakers into concrete or brick walls.
- The build-in box has special grooves to guarantee an optimal grip into concrete and cement.
- Dim. 213(h) x 146(w) x 84(d)



* All dimensions are in mm

Cabinet

, APart offers you a full range of cabinet speakers to fit into any interior style or décor. Cabinet speakers that can be used independently or in a combination with our range of incredible compact and powerful subwoofers. Residential, retail, public buildings or catering,...

APart has a speaker to fit every budget and project !



Miniatures

without compromising on sound quality. MASK2 speakers in combination with a SUBLIME subwoofer offer a combination of cute looks and great sound. These incredibly small satellite speakers are designed especially for use in small to medium sized rooms in residential as well as public areas, while SUBLIME offers the ultimate blend of a compact size and deep, fat basses.

MASK2 SATELLITE SPEAKER



• MASK2-BL



• MASK2-W

- Sound quality that exceeds the market's standard
- Incredibly small design allows inconspicuous integration
- Easy mounting in corners or on ceilings with the included special bracket
- Full range 2.5" speaker, 50 Watts program power @ 8 Ohm
- Should always be used in combination with the SUBLIME subwoofer
- Dimensions : 94 (h) x 82 (w) x 108 (d) mm

SUBLIME SUBWOOFER

- Extremely slim and compact, but yet produces a full, deep bass
- Built-in stereo X-over : the ideal partner for MASK2 satellite speakers
- Wall mounting brackets included
- 6.5" dual coil woofer
- 2 x 80 Watts @ 8 Ohm
- Dimensions : 420 (h) x 470 (w) x 120 (d) mm



• SUBLIME-W

• SUBLIME-BL




Champion


Thanks to their unique design, easy mounting and outstanding sound reproduction, MASK speakers have become one of the best selling APart products. They are available both in 8 Ohm and 16 Ohm/100 V, which makes them suitable for both low impedance as well as constant voltage installation. This series offers a combination of amazing sound and stunning looks: your guarantee for success in residential as well as commercial installations!

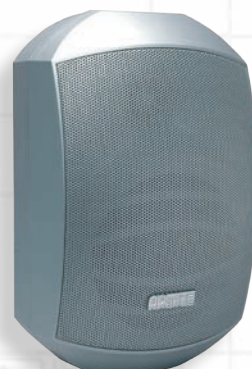
MASK4 INNOVATION




- MASK4T-BL 
- MASK4-BL



- MASK4T-W 
- MASK4-W



- MASK4T-SLV 
- MASK4-SLV

• MASK4-BL • MASK4-W • MASK4-SLV

- Cute as a baby
- 4.2" HD woofer, 1" tweeter
- 70 Watts program power @ 16 Ohm
- 20 - 10 - 5 - 2.5 Watts 100V transformer
- Protection Guard™ Technology
- PAINTCAB6 (option: any RAL colour)
- IP64 / Dimensions : 223 (h) x 129 (w) x 130 (d) mm

• MASK4-BL • MASK4-W • MASK4-SLV

- small and elegant
- fits into every décor and interior style
- 4.2" HD woofer, 1" tweeter
- 70 Watts program power @ 8 Ohm
- Protection Guard™ Technology
- PAINTCAB6 (option: any RAL colour)
- IP64 / Dimensions : 223 (h) x 129 (w) x 130 (d) mm

MASK6
REFERENCE



• MASK6-BL

• MASK6T-BL



• MASK6-W

• MASK6T-W



• MASK6-BL • MASK6-W

- The new reference ...
- 6.5" HD Woofer, 1" tweeter
- 200 Watts program power @ 8Ω
- Protectionguard™ technology
- PAINTCAB6 (option: can be painted in any RAL colour)
- IP64 / Dimensions: 315 (h) x 175 (w) x 195 (d) mm

• MASK6T-BL • MASK6T-W



- Quality & design 100V / 16Ω solution
- 6.5" HD Woofer, 1" tweeter
- 200 Watts program power @ 16Ω
- 60 - 30 - 15 - 6 Watts 100V transformer
- Protectionguard™ technology
- PAINTCAB6 (option: can be painted in any RAL colour)
- IP64 / Dimensions: 315 (h) x 175 (w) x 195 (d) mm

Involvement

of both end users and contractors alike formed the basis of the design for the INTELLI-MOUNT. The INTELLI-MOUNT is the perfect result of synergy between our years of experience and the wishes and remarks made by contractors in the field. This bracket comes as standard with all MASK4 & MASK4T, MASK6 & MASK6T models. A series of handy mounting accessories have been added to the range.

MASK1W - MASK1BL L-BRACKET



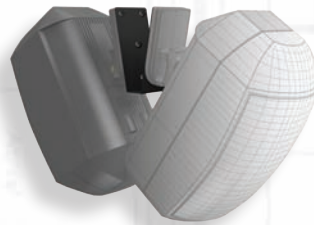
- MASKL-W
 - MASKL-BL
- (a set contains 1 pair)



MASKVW - MASKVBL V-BRACKET



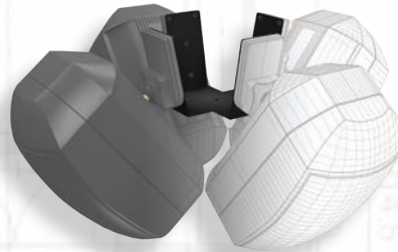
- MASKV-W
- MASKV-BL



MASKWW - MASKWBL W-BRACKET



- MASKW-W
- MASKW-BL



MASK4 & MASK6 SERIES INTELLI-MOUNT



- INTELLI-MOUNT
- (Included in MASK4 & MASK6 series)

MASK4 & MASK6 SERIES SAFETY



- SAF CAB6
- (Included in MASK4 & MASK6 series)



Flagship

Mask8 is the flagship of the MASK loudspeaker series.

Its sound quality and output level fits both background and high-level dance music.

Next to the MASK8 top speakers we now introduce the MASK8F : a full range speaker that can be used without subwoofer and that has a sound that comes close to a studio monitor. Whatever model you choose, you are always sure to experience every musical characteristic and any vocal detail of any musical style!

MASK8 PRECISION



- MASK8-BL*
- MASK8F-BL*



- MASK8-W
- MASK8F-W

• MASK8-BL • MASK8-W

- Vocal perfection and dynamic music
- Protection-Guard™ technology
- MDF Wooden cabinet
- 8"HD woofer, 1" tweeter
- 300 Watts program power @ 8 Ohm
- PAINTCAB8 (option: any RAL colour)
- Dimensions : 411(h) x 250 (w) x 250 (d) mm

• MASK8F-BL • MASK8F-W

- Full range speaker for stand-alone use without subwoofer
- HiFi quality at amazing high levels
- Protection-Guard™ technology
- 8"HD woofer, 1" tweeter
- 300 Watts program power @ 8 Ohm
- PAINTCAB8 (option: any RAL colour)
- Dimensions : 411(h) x 250 (w) x 250 (d) mm



- 90° rotatable 100°H x 70°V horn for vertical installation



- Mounting bracket included with all MASK8 models

Powerful yet so small is the most often heard comment about our passive subwoofers. The 10" dual coil, professional woofer produces an incredibly strong low bass that makes it easy for the satellites to complete the sound without fuss. The modest looking subwoofers occupy so little space they can be put under a bench, in a corner or they can be built into furniture.

**SUB2400
FOUNDATIONS**



• SUB2400*

• SUB2400-W

- SUB2400* • SUB2400-W
- David beats Goliath
- Very robust Plywood construction
- Stronger and "faster" than bigger 15" subs
- 2 pcs 10" dual coil long Xmax woofer
- 2 x 400 Watts program power
- 4Ω or 16Ω selector at back panel
- Protection-Guard™ technology
- Dimensions: 700 (h) x 352 (w) x 450 (d) mm

**SUB2201
SUBWOOFER**

- Smooth and punchy bass from a compact enclosure
- 10" long-stroke woofer
- 250 Watts music power @ 4 Ohm
- Ideal partner for APart MASK speakers in active setup, X-over frequencies at 150 Hz
- Now in plywood and with structured paint
- Dimensions : 600 (h) x 300 (w) x 380 (d) mm



• SUB2201-BL*

• SUB2201-W

**POLE
MOUNT**



- STFLOOR
- Floorstand for MASK8F-BL or MASK8-BL speaker



- STSUB
- Pole to combine the SUB2400 or SUB2201 with MASK8F-BL or MASK8-BL speaker



- STT
- T-mount to mount two MASK8F-BL or MASK8-BL speakers on a single STSUB pole or STFLOOR stand.

* Our black cabinets are equipped with 35mm pole mount adaptor.

Vibrations

Can you believe your ears? These small subwoofers make people stop in their tracks and wonder... They are responsible for the deep bass that give you this perfect sound! They are compact and available in white and black color – a guarantee that they can be integrated in any interior, private or public. SUBA165, SUBLIME and SUBTILE fill the room with a full rich sound, even in combination with small top speakers.

SUBA165 COMPACT



• SUBA165 • SUBA165-W

- Compact, yet powerfull
- 8" HD type woofer
- Adjustable active x-over
- 140 Watts power amplifier, auto -on/off
- Line or speakerline inputs
- Passive stereo low-Cut x-over for top satellites
- Dimensions : 362 (h) x 261 (w) x 405 (d) mm

SUBTILE THIN



• SUBTILE-BL • SUBTILE-W

- Brings incredible vibes in shops, lounge bars or in a living room
- 125 W @ 4 Ohm program power
- Wall bracket suspension system included
- Perfect match with Champ-4 amplifier
- Probably the thinnest sub in the world...
- Custom-designed to be integrated inconspicuously into any interior, or to be hidden under a closet, behind a curtain or under a sofa.
- Dimensions: 450 (H) x 500 (W) x 120 (D) mm

SUBLIME SLIM



• SUBLIME-BL • SUBLIME-W

- Extremely slim and compact, but yet produces a full, deep bass
- Built-in stereo X-over
- Wall mounting brackets included
- 6.5" dual coil woofer
- 2 x 80 Watts @ 8 Ohm
- Dimensions : 420 (h) x 470 (w) x 120 (d) mm

Evolutionary

A proven value in active speaker sets taken one step further: please welcome the SDQ5PIR. It has all the functionalities of the SDQ5P and more: IR and RS-232 control allow full control. No more waste of energy in hastily deserted meeting rooms or class rooms thanks to the auto-standby function. Optionally available wall control panels with local input, turn this active speaker set into a full, yet surprisingly affordable sound system.



All your possibilities covered – SDQ5PIR offers the unique combination of convenience and affordability of the SDQ5P, now with IR and RS-232 control to give you even more control. And, two wall panels that make you forget the worries so often associated with audio in public rooms. No more lost or stolen remotes, no battery problems, no IR reflections. ACP has volume control, while ACPL also offers a microphone and stereo line input.

SDQ5PIR DIGITAL



RS 232
CONTROL



• SDQ5PIR-BL

• SDQ5PIR-W

- Stereo speaker set with 1 active and 1 passive speaker
- Input A: unbalanced stereo mini-jack connector
- Input B: balanced euroblock connectors
- 2 x 30 Watts music power
- Volume, bass + treble control
- Energy-saving auto standby function
- IR remote control, mounting brackets and 3 m power cord included
- Wall remote control panels available as an option
- Dimensions (L=R): 243 (h) x 180 (w) x 148 (d) mm

AUDIO CONTROL PANEL



• ACP

- ON/OFF, VOLUME, MUTE
- All connection and power via CAT5 cable
- Compatible with E-MODIN / N-MODIN
- Dimensions: 85x85x28mm (h x w x d)



• ACPL

- Same as ACP + selectable MIC-input (jack) + stereo line input (mini-jack)
- Increased input sensitivity for laptops and MP3 players
- Low cut filter on MIC-input: better speech intelligibility + no 'popping'
- Dimensions: 85 x 85 x 28mm (h x w x d)



• N-MODIN

• E-MODIN

- N-MODIN: brick wall mounting
- E-MODIN: dry wall mounting

Industry standard

Public rooms with different users on almost-hourly basis are a challenge to any sound system – and a major headache for every facility manager! SDQ5P is designed exactly for those situations. It is a classic in the APart line up and combines quality sound with affordability, flexibility, reliability and easy operating.



•SDQ5P-BL

•SDQ5P-W

SDQ5P
ACTIVE



- Comes as a stereo speaker set: 1 active and 1 passive LS
- Dynamic music and detailed voice clarity
- 2 x 30 Watts RMS power for high level outputs
- Balanced inputs allow long input-signal cables
- Bass & treble control
- RCA and mini-jack stereo inputs (MP3 players)
- Low distortion, high efficient 5.25" woofer and 1" tweeter
- Magnetically shielded components
- Brackets and 3 metres long power cord included
- Dimensions (L = R): 243 (h) x 180 (w) x 148 (d) mm

Established Value

probably is the key feature of the SDQ series. With the price quality ratio becoming more and more important in the contractor market, the SDQ loudspeaker range perfectly matches this criterion!

Its new discrete, yet distinguished design is in perfect harmony with the transparent sound exhibited. The SDQ series are available for both constant voltage and- or low impedance use, all with overload protection and brackets included.

SDQ3 MINI



•SDQ3T-BL



•SDQ3T-W



•SDQ3T-SLV



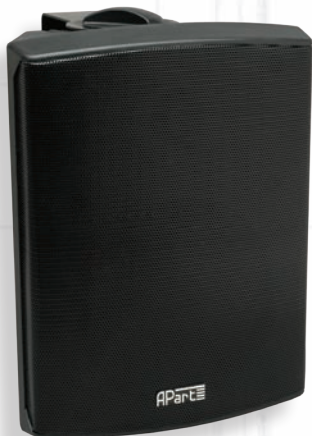
- Small & Cute, but yet a great sound
- 3" woofer, 1" tweeter
- 40 Watts program power @ 16Ω
- 6 - 3 - 1,5 Watts 100V transformer
- PAINTCAB6 (option: can be painted in any ral colour)
- Dimensions: 152 (h) x 105 (w) x 110 (d) mm

SDQ3 & SDQ5 SERIES SAFCAB6



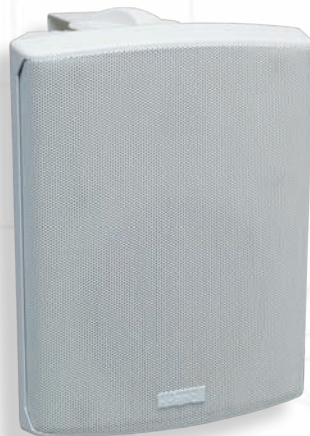
- available as an option

SDQ5 SERIES



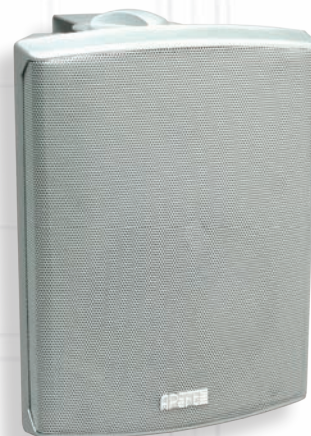
•SDQ5-BL

•SDQ5T-BL



•SDQ5-W

•SDQ5T-W



•SDQ5T-SLV

- SDQ5T-BL • SDQ5T-W • SDQ5T-SLV

- Reliable & competitive install solution
- 5.25" woofer, 1" tweeter
- 80 Watts program power @ 16Ω
- 30 - 15 - 6 - 3 Watts 100V transformer
- PAINTCAB6 (option: any ral colour)
- Dimensions: 245 (h) x 180 (w) x 154 (d) mm

- SDQ5-BL • SDQ5-W

- Powerfull HiFi sound
- The winner takes it all!
- 5.25" woofer, 1" tweeter
- 80 Watts program power @ 8Ω
- PAINTCAB6
- Dimensions: 245 (h) x 180 (w) x 154 (d) mm

Engineered

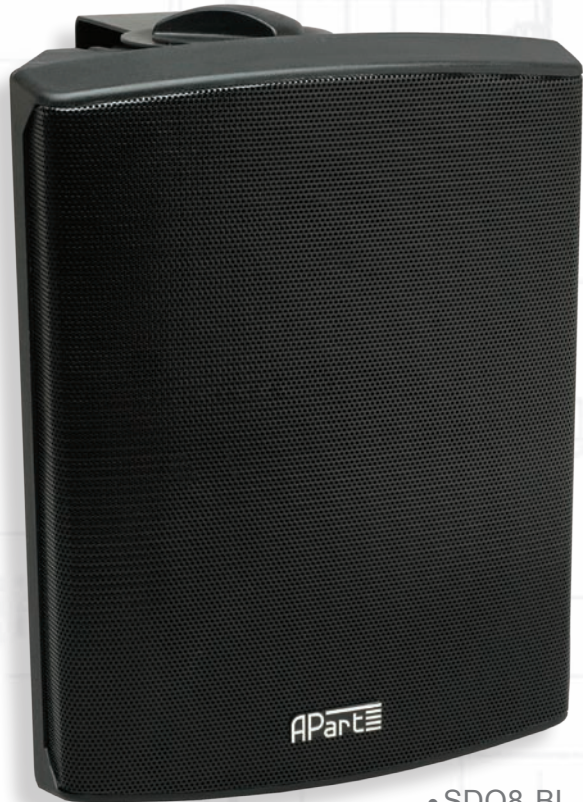
thanks to the 8" woofer and 1" silk-dome tweeter, the SDQ8 provides you with HiFi quality sound for ambient background music applications. The well engineered woofer coupled with an optimised bass-reflex housing results in a high performance sound, not normally associated with a relatively small cabinet. The SDQ8 is available in black or white and comes with a sturdy U-bracket.

SDQ8
SERIES



•SDQ8-W

•SDQ8T-W 



•SDQ8-BL

•SDQ8T-BL 

•SDQ8-BL •SDQ8-W

- Power at a price easy to live with!
- 8" woofer, 1" tweeter
- 160 Watts program power @ 8Ω
- PAINTCAB8 (option: any ral colour)
- Dimensions: 381 (h) x 283 (w) x 243 (d) mm

•SDQ8T-BL •SDQ8T-W 







- A powerfull contractor solution
- 8" woofer, 1" tweeter
- 160 Watts program power @ 16Ω
- 60 – 30 – 15 - 6 Watts 100V transformer
- PAINTCAB8 (option: any ral colour)
- Dimensions: 381 (h) x 283 (w) x 243 (d) mm

Fundamentals

the SM series offers a complete range of budget friendly multi-purpose functional cabinet speakers. With excellent sound quality and a no-frills design that is yet instantly recognizable as 'APart'. Available in white and grey, with or without a volume control hidden under the logo shield and as model with priority relay. This series has all the options for professional use in public buildings, schools, parking garages, supermarkets... Even where budget is vital, APart puts you in pole position!



- Complete range: with or without volume control or priority relay
- Volume control, if available, is recessed and can be hidden under the logo shield
- With or without bracket and back plate: multiple mounting positions possible
- Available in white and grey
- Excellent sound quality and intelligibility due to it's 5" woofer
- Quick fit cable clamps for easy quick installing
- ABS plastic housing / metal grill
- IP 50 – indoor use only
- Dimensions: 202 (w) x 142 (h) x 72 (d) mm

					
Model	Colour	On wall mounting	Bracket	Volume control	Priority relay
SM6-G	Grey	•			
SM6-W	White	•			
SM6V-G	Grey	•		•	
SM6V-W	White	•		•	
SM6VP-G	Grey	•		•	•
SM6VP-W	White	•		•	•
SMB6-G	Grey		•		
SMB6-W	White		•		
SMB6V-G	Grey		•	•	
SMB6V-W	White		•	•	
SMB6VP-G	Grey		•	•	•
SMB6VP-W	White		•	•	•

Inconspicuous

Part sphere loudspeakers are suspended in buildings that exceed 4 meter in height and with low environmental noise. Because of the equal and spherical sound dispersion, they can cover an expansive area with a minimum number of speakers.

The Rock series is designed to be hidden in the gardens of private homes, theme parks, pool areas...

Suspended high up in a building or hidden in shrubs: it's hard to tell where this amazing sound is coming from!

ROCK ESPECIALLY



• ROCK608

- Inconspicuous integration, amazing sound
- 6.5" woofer, 1" tweeter
- 60 Watts program power @ 8Ω
- PAINTCAB8 (option: any RAL colour)
- Dimensions: 260 (h) x 200 (w) x 280 (d) mm

• ROCK20

- The reference for large gardens
- Inconspicuous integration
- 6.5" woofer, 1" tweeter
- 20 - 10 - 5 - 2.5 Watts 100 Volt transformer
- PAINTCAB-8 (option: any RAL colour)
- Dimensions: 260 (h) x 200 (w) x 280 (d) mm

SPH16 SMOOTH



• SPH16

- Imperceptible design, great 2-way sound quality
- 5.25" woofer & 1" tweeter
- 16 - 8 - 4 Watts 100 Volt transformer
- 3 metres connection cable with metal safety wire
- PAINTCAB6 (option: any ral colour)
- Dimensions: 180 mm outside Ø

SPH20 DISPERSION




• SPH20

- Loud and wide sound dispersion ...
- 8" dual paper cone woofer
- 20 - 10 - 5 Watts 100 Volt transformer
- 3,3 metres connection cable with metal safety wire
- PAINTCAB8 (option: any ral colour)
- Dimensions: 254 mm outside Ø


STURDY

quality. This range of sound projectors is designed for high quality music and speech reproduction in many industrial or professional applications, both in- or outdoors. These speakers combine a rugged housing with good sound quality, and have either epoxy coated, aluminum or stainless steel mounting brackets. Your only guarantee for long-term outdoor use without rusting!




- **MPBD20-G** 
 - Unique design for less reflection and bigger intelligibility
 - 2 x 5" moisture resistant full range speaker
 - 20 - 10 - 5 Watts 100 Volt transformer
 - IP64, all parts aluminium or stainless steel – no rust
 - Multi positioning bracket for ceiling, wall or corner mounting
 - PAINTMP (option any RAL color)
 - Dimensions 270 (l) x 135 (w) x 165 (h) mm bracket included





- **MP16-G** 
 - Compact and stylish sound projector
 - 5.5" coated paper dual cone woofer
 - 16 - 10 - 5 Watts 100 Volt transformer
 - IP56 + All metal parts aluminum or stainless steel: no rust
 - PAINTMP (option: any RAL colour)
 - Dimensions: 138 (diameter) x 200 (l) mm



- **MP26-G** 
 - Powerful and stylish sound projector
 - 6.5" coated paper dual cone woofer
 - 26 - 20 - 10 Watts 100 Volt transformer
 - IP56 + All metal parts aluminum or stainless steel: no rust
 - PAINTMP (option: any RAL colour)
 - Dimensions: 170 (diameter) x 240 (l) mm




- **MPH30-G**  
 - Horn loaded sound projector
 - 5.25" treated paper cone woofer
 - 30 - 20 - 15 - 10 - 5 Watts 100 Volt or 8Ω
 - IP54 + Epoxy coated bracket included : no rust
 - PAINTMP (option : any RAL colour)
 - Dimensions : 180 (diameter) x 200 (l) mm


Heavy Duty

These horns are loud! Especially for high output speech, alarm signal, or even music reproduction in the industry or outdoors. Every horn has an in-house designed driver, and is equipped with a stainless steel or aluminum mounting bracket, to avoid rust. APart horn speakers are ready to do the job even in the most demanding of circumstances, indoors or outdoors.




- **H10-G** 
- Compact compression horn loudspeaker
- For high background noise use
- Ideal for speech and alarm signals
- Selector 10 - 5 - 2.5 - 1.25 W in 100 V or 8Ω
- IP66 + Stainless steel bracket (no rust)
- Diameter: 140 mm – Length: 192 mm





- **H20-G** 
- Powerful compression horn loudspeaker
- For high background noise use
- Ideal for speech and alarm signals
- Selector 20 - 10 - 5 - 2.5 W in 100 V or 8Ω
- IP66 + Stainless steel bracket (no rust)
- Diameter: 200 mm – Length: 232 mm



- **H30LT-G** 
- Long throw compression horn loudspeaker
- Wide dispersion, high efficiency
- Ideal for speech and alarm signals
- Selector 30 - 15 - 7.5 - 3.75 W in 100 V or 8Ω
- IP66 + Stainless steel bracket (no rust)
- Dimensions : 208 (h) x 285 (w) x 290 (d) mm




- **MPLT32-G** 
- High quality 2-way long throw music projector
- 6.5" cone woofer & 1" horn driver
- 32 - 16 - 8 - 4 Watts 100 Volt transformer
- IP66 + Aluminium bracket (no rust)
- PAINTMPLT (option: any RAL colour)
- Dimensions : 250 (h) x 360 (w) x 290 (d) mm


- **MPLT62-G** 
- Very powerful 2-way long throw music projector
- 6.5" cone woofer & 1" horn driver
- 62 - 32 - 16 - 8 Watts 100 Volt transformer
- IP66 + Aluminium bracket (no rust)
- PAINTMPLT (option: any RAL colour)
- Dimensions : 250 (h) x 360 (w) x 290 (d) mm


Elegant

APart's range of slim but powerful columns offers excellent audio directivity for music as well as speech. Thanks to the elegant design, these speakers are ideal for indoor and outdoor use: from sports fields to public buildings or recreational areas, meeting rooms or educational facilities. The high power COLW series, with both 100V and low impedance inputs, have an amazing high output level, combined with well controlled sound dispersion.

COLW COLUMNS

- COLW41 
 - 4 x 3.3" full range woofer + 1 x 1" tweeter
 - 40 - 30 - 15 Watts 100 V transformer
 - 60 Watts music power @ 16 Ohm
 - PAINTCOL (option: any RAL colour)
 - IP66 / Dimensions : 555 (h) x 100 (w) x 83 (d)

- COLW81 
 - 8 x 3.3" full range woofer + 1 x 1" tweeter
 - 80 - 40 - 30 Watts 100 V transformer
 - 120 Watts music power @ 8 Ohm
 - PAINTCOL (option: any RAL colour)
 - IP66 / Dimensions : 974 (h) x 100 (w) x 83 (d)

- COLW101 
 - 10 x 3.3" full range woofer + 1 x 1" tweeter
 - 100 - 60 - 40 Watts 100 V transformer
 - 140 Watts music power @ 8 Ohm
 - PAINTCOL (option: any RAL colour)
 - IP66 / Dimensions : 1010 (h) x 100 (w) x 83 (d)

• DID YOU KNOW

- Tall columns have a much wider and controlled dispersion than shorter models.
- Our larger models also cover a wider area than conventional speakers, so less speaker cabinets are needed to achieve the same sound pressure in a certain area.

• COLWBRA



bracket for COLW range



Standard bracket included





Graceful


Our range of extra slim columns is especially suitable for sound reproduction in acoustically difficult venues. Advanced technology guarantees optimized sound dispersion and improved speech intelligibility. This decreases microphone feedback in reverberant locations such as houses of worship, sport facilities, public buildings as well as conference facilities and auditoriums. A low-impedance input allows an easy connection to flat screens.


Timeless design combined with impeccable sound reproduction.

COLS COLUMNS

- COLS41 
 - 4 x 2" full range woofer + 1 x 1" tweeter
 - 20 - 10 - 5 Watts 100 V transformer
 - 30 Watts music power @ 8 Ohm
 - PAINTCOL (option: any RAL colour)
 - IP66 / Dimensions : 400 (h) x 66 (w) x 66 (d)

- COLS81 
 - 8 x 2" full range woofer + 1 x 1" tweeter
 - 30 - 15 - 6 Watts 100 V transformer
 - 40 Watts music power @ 16 Ohm
 - PAINTCOL (option: any RAL colour)
 - IP66 / Dimensions : 613 (h) x 66 (w) x 66 (d)

- COLS101 
 - 10 x 2" full range woofer + 1 x 1" tweeter
 - 40 - 20 - 10 Watts 100 V transformer
 - 60 Watts music power @ 8 Ohm
 - PAINTCOL (option: any RAL colour)
 - IP66 / Dimensions : 723 (h) x 66 (w) x 66 (d)

- COLS141 
 - 14 x 2" full range woofer + 1 x 1" tweeter
 - 60 - 30 - 20 Watts 100 V transformer
 - 80 Watts music power @ 8 Ohm
 - PAINTCOL (option: any RAL colour)
 - IP66 / Dimensions : 940 (h) x 66 (w) x 66 (d)

- COLSBRA



bracket for COLS range



Standard bracket included



Reliable

APart brings a full range of pre-amplifiers, mixing amplifiers, low impedance and 100V power amplifiers. With the soundblock modular amplifier series, any installer is up to the challenge of building an extensive multi-zoning system. Next to an assortment of various sound sources, you'll also find an easy-to-use microphone system for both fixed installation and mobile use. Reliability and sound quality combined; the perfect match with our APart philosophy.





PRE-AMPLIFIERS

Page 50-54



SIGNAL PROCESSING

Page 55



POWER AMPLIFIERS

Page 56-62



INTEGRATED AMPLIFIERS

Page 64-65



MIXING AMPLIFIERS

Page 66-69



100V POWER AMPLIFIERS

Page 70-71



MUSIC SOURCES & SOUND SYSTEMS

Page 72-73

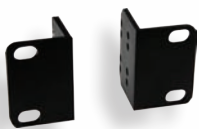
Multifunctional that's probably how colleagues will see the PM1122. Imagine a stereo pre-amplifier that can be used in a supermarket with 10 check-out lines, a church with 5 mics that need a noisegate, or even a professional 2 stereo zone wireless or RS232 controlled meeting room ? Your wish has now become reality : the PM1122 can handle every application and makes the use of a whole string of pre-amplifiers superfluous !

PM1122
STEREO PRE-AMPLIFIER

- High-grade electronics & engineering
- Nice LED's for a clear overview
- 4-Level priority system with emergency input
- Built in chime (volume adjustable)
- 230 V to 24V DC adaptor & 19" brackets included
- Dimensions : 44 (h) x 433 (w) x 222 (d)

INPUT
MICROPHONE SECTION

- 5 MIC/Line inputs with phantom power each
- Assignable to one or both stereo output zones
- Individual tone, gain and volume control per input
- Noise gate with adjustable threshold for Mic Mix
- Priority can be switched off per stereo output zone
- Mic input 5 can be link input to/from another PM1122



• 19" brackets included



• Metal cover for MIC inputs and Zone 2 output included



- NTM-1
- Optional balanced microphone transformer



W-BL



W-SLV

W-W

- PM1122W-BL
- PM1122W-SLV
- PM1122W-W

- Ultra flat wireless wall control can be fixed everywhere
- Source selection – Mic mix volume – music volume control
- Battery included, NO cables



• On and in-wall mounting boxes for the PM1122R & PM1122RL remote controls.

STEREO OUTPUTS 2-ZONE SECTION

- 4 stereo line inputs
- Line (music) selector per output zone
- Individual gain control per input at the rear side
- Music and Mic Mix level control by VCA
- Bass – treble tone control per output zone
- Multiple remote options available



• PM1122R ANALOG REMOTE CONTROL

- Very affordable
- Source select, Mic mix volume, Music volume

• PM1122RL ANALOG REMOTE WITH LOCAL AUDIO INPUT

- Same as PR1122R, but with additional;
- Balanced MIC & line input via stereo mini jack
 - Level control & Tone control for local input
 - Easy wiring via standard UTP CAT5 cable



UTP CAT5



RS 232
CONTROL



• PM1122WR

- Plug-in receiver module for RF wireless remote control panels
- Makes multiple remote controls possible per zone
- Optional with PM1122-INT

• PM1122-INT 2-ZONE DIGITAL REMOTE INTERFACE

- Connection with PM1122 via UTP CAT5 cable per zone
- SUB-D9 connector for RS232 control
- Up to 64 presets programmable and accessible via RS232
- 2 x 6 presets direct accessible via contact closure
- Clear LED status indication on front panel

• PC software included



More Zones

Following the overwhelming success of the 2-zone PM1122, APart now introduces a sophisticated pre-amplifier that allows you to control four stereo zones with just one affordable unit! ZONE4 allows the user to assign 3 microphones and 4 stereo line inputs to any of four output zones. A digital display, remote control, versatile, affordable: ZONE4 gives you the competitive edge to tackle even the most daunting challenges!

4 ZONE STEREO PRE-AMPLIFIER

- Perfect for multi-room and multi-zone
- Easy-to-use controls and display per zone
- Digital Control by RS-232, remote control panel, IR serial
- Priority input for paging or emergency
- Removable brackets included
- Dimensions : 44 (h) x 419 (w) x 184 (d)



INPUT MICROPHONE SECTION

- 3 mono MIC/LINE inputs via Euroblock connector
- Tone, gain and level controls available
- Every MIC input assignable to any of the 4 zones
- Phantom power selectable on MIC 2 and 3
- Paging : MIC1 mutes line input, MIC 2 + MIC 3 mix with line input
- Designed to work with MICPAT-4, four-zone paging microphone



MICPAT-4 PAGING MICROPHONE

- Designed to operate plug and play with ZONE4
- Selective paging and "page ALL"



ZONE4R REMOTE



- Basic controls : easy to use ! source select
- Status display
- Music level and mic-mix level control+mute, source select
- Sophisticated and yet affordable!
- Easy to wire with UTP CAT5

- On- and in-wall mounting box for the ZONE4R remote control



• BB1



• BB1i

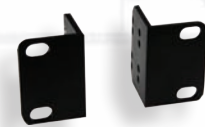


OUTPUT SECTION

- Line input selector per zone
- Bass - Treble control per zone
- Music level control per zone
- Independent mic-mix level control per zone
- Push to mute function for music and mic-mix per zone
- Mono or stereo configurable

RJ45SPLIT CONNECT

- RJ45 splitter : 1 in, 4 out
- to connect more MICPAT-4 or ZONE4R's



- 19" brackets included



- Metal cover for MIC settings included



POWER

Clear

You like things crystal clear, well organised, and above all easy-to-use. For all applications where standard pre-amplifiers lack possibilities, we step in and offer you clever solutions in both technical and non-technical ways.

PIR7600 PRE-AMPLIFIER



- Remote controlled stereo pre-amplifier mixer
- 6 Line, 2 mic inputs (MIC1: mic/line/tel. switch)
- 2 Stereo output zones
- IR or wired (RJ45) remote control
- Transfers IR signal of other devices
- Dimensions: 44 (h) x 483 (w) x 275 (d) mm



•PIR-REM
(Included)



•PIR-EMIT
(Included)



•PIR-REC
(Included)

PM7400MKII PRE-AMPLIFIER



- Versatile stereo Mic-Line pre-amplifier mixer
- 6 Line, 2 mic inputs (VOX mute on MIC 1)
- 2 stereo outputs
- Independant tone control for mic & line inputs
- Easy to use
- Dimensions: 44 (h) x 483 (w) x 275 (d) mm

POWER

SIGNAL OK

CH1

MAX

THE MAX INPUT LEVEL
CANNOT BE EXCEEDED

CH2

MAX

SIGNAL OK

Control

These electronics give you extra control of your soundsystem. APart's Audiolock is a automatic level controller that has grown into yet another industry standard. It protects the speakers as well as the bar's license. The PXQ2215 is an equalizer as well as crossover.

AUDIOLOCK LEVEL CONTROLLER



- Automatic Level Controller: a pre-adjusted maximum SPL can not be exceeded
- Protects not only your loudspeakers but also your license
- No more broken woofers and tweeters
- Connected between the output of the mixer/pre-amplifier and the input of the power amplifier
- Unit can be sealed with included numbered seals

PXQ2215 EQUALIZER / X-OVER



- Professional stereo equalizer / X-over
- Equalizer : 2 x 15 bands, 2/3 octave
- Bypass & 6/12dB switch for L & R on frontpanel
- X-over: 20 - 300 Hz adjustable
- 24dB / octave Linkwitz Riley
- Dimensions: 44 (h) x 483 (w) x 280 (d) mm

Digital

CHAMP-3D is a 3-channel, fully programmable digital amplifier. With the same advantages as the other models in APart's series of convection cooled amplifiers and much more: a built-in DSP, a fully parametric 4-band equalizer and RS-232 control of all essential functions. Genuine Hypex amplifier modules at the core of the unit for a superior sound quality. And a loudspeaker wizard for quick and easy set up with APart loudspeakers. Are you ready for the future?



EASY TO OPERATE

USER LEVELS

1. Fully locked
2. Volume only
3. Installer: All DSP parameters and speaker levels can be set

BUILD IN SPEAKER WIZARD

Adjusts all parameters in function of the chosen APart loudspeakers and subwoofers
Guarantees an optimized sound quality and fully protected sound solution with 24/7 reliability

FULL PROTECTION

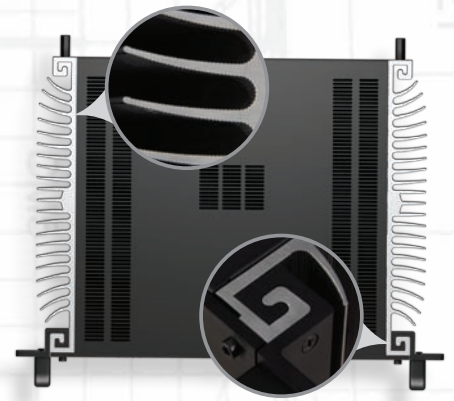
A correct installation with the speaker wizard guarantees a fully protected system: No clipping
The pre-set maximum level cannot be exceeded: the limiter-leveler protects the bar's license
Damaging clipped input signals result in overload protection

OVERALL

All firmware & the speaker wizard can be updated via RS232
Low power consumption (1,5 Watts) in standby mode
Wired external volume control optionally available
Only 2 rackunits high

AMP DESIGN

- Versatile power center: for all medium to mid-sized applications up to 2100 Watts
- Convection cooled 3 channel power amplifier
- High End Hypex class D amplifier modules with a high damping factor
- Toroidal transformer with oversized capacitors for guaranteed dynamic sound. Independent for Sub & L+R channel
- Balanced analogue internal signal flow
- Analogue Devices™ DSP



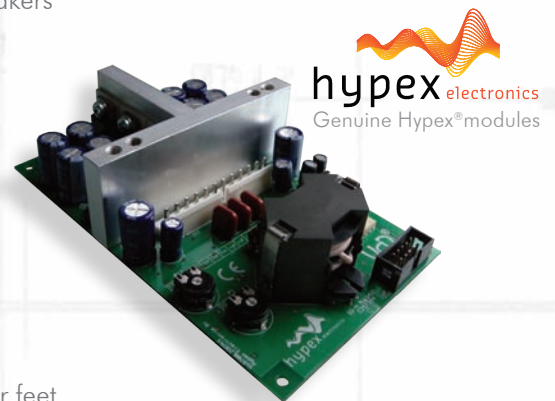
DIGITAL DSP

- 4 band full parametric EQ
- X-Over
- Defeatable automatic loudness
- Delay : time alignment of the top speakers
- Compressor : increases musical density
- Limiter - leveler (similar to Audiolock) protects your speakers and the bar's license
- Subsonic filter : filters harmful frequencies to protect the amplifier and speakers



PERFORMANCE CHARACTERISTICS

- Dynamic program power:
L + R top channel: 2 x 530 Watts @ 2.7Ω
Subwoofer channel: 1350 Watts @ 2Ω
- Input channels:
2 x balanced XLR male + 2 x balanced XLR female
2 x balanced Euroblock
- Dimensions: 483 (w) x 89 (h) x 380 (d) mm - with rack ears, without rubber feet
- Weight: 16 Kg



hypex electronics
Genuine Hypex® modules

Silent Revolution

Champ One realises what many in the audio industry deemed impossible: an amplifier without cooling fans that is capable of delivering pleasing musical sound quality, high dynamics and high reliability. Finally a high-end power solution for the installers market at an affordable price !

CHAMP-ONE POWER AMPLIFIER



WHY AUDIOPHILE

- Created by our high-end audio engineering team
- Realised by our professional-audio engineering team
- Approved by our customers' listening teams
- Pure, open, pleasing sound quality
- High power, incredible dynamic punch
- Very loud sounding ... without sounding hard
- It loves music! - No clipping allowed...
- 'tube' emulation for exceptional warm sound
- Full analogue design, but close to class-D efficiency

CHAMP-ONE SILV SILVER





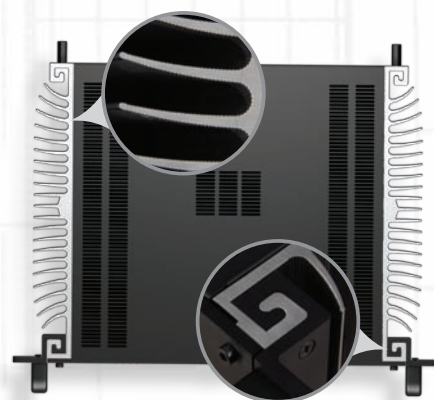
PERFORMANCE CHARACTERISTICS

- Headroom power 2x400W – 2x600W (8 - 4 Ohm / Ch.)
- Dynamic power capacity ; 750 Watts/Ch. , > 20 Ampere
- Sine wave power(*) 2x300W – 2x450W (8 - 4 Ohm / Ch.)
- 46.000 uF high grade electrolytic capacitors
- Compact and high power toroidal transformer
- Genuine Neutrik speakon connectors
- Speaker wire binding posts
- Doubled RCA - XLR Neutrik input connectors
- Net dimensions and weight : 483 (w) x 88 (h) x 380 (d)mm, 13 kg
- (*) Sine wave is like a siren, it is not an audiophile music experience

INSTALLER BENEFITS

SILENT – FREE AIR COOLING – NO FAN

- Electronics stay dustfree
- No ventilator noise
- No maintenance or cleaning
- 24h/24h hour operation



- Most efficient APart heatsink design
- Temperature and power monitored by APC
- One big PCB, so no internal cables and connectors
- Light weight, self-supporting aluminium chassis
- Strong and detachable 19" bracket system

INSTALLER BENEFITS

APC – AUTOMATIC POWER CONTROL



- Keeps music musical, no harsh or overload sound
- Keeps your speakers and the users out of trouble
- Preset of max program power (150 – 600W/ch)
- One model can fulfill all your applications
- Settings can be covered and secured

Family

affair: built on the same unique platform as its bigger sibling, CHAMP-2 offers equally peerless characteristics. This amplifier has no fans, and relies entirely on convectional cooling only. It's affordable, and it brings installers a dynamic, powerful sound that is unrivalled in its category!

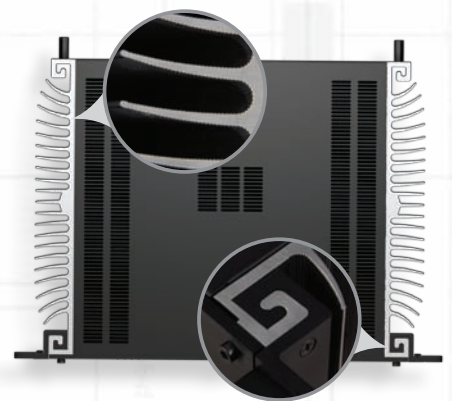
CHAMP-2 STEREO AMPLIFIER



- High power, dynamic punch
- Unequaled pure music quality
- Loud, without sounding hard
- No clipping, no distortion : APC keeps control
- Can drive 3 pcs of 8 Ohm speakers in parallel per channel
- Individual level control on front

INSTALLER BENEFITS

- No ventilator, no noise, no dust problem
- No maintenance or cleanout procedure needed
- unique self-supporting aluminum chassis
- strong detachable 19" brackets



PERFORMANCE CHARACTERISTICS

- Headroom power 2x200 W (8 Ohm), 2 x 350 W (4 Ohm), 2 x 450 W (2.7 Ohm)
- Dynamic power capacity : 600 W/ch
- Sine Wave power(*): 2 x 120 W (8 Ohm) / 2 x 180 W (4 Ohm) / 2 x 200 W (2.7 Ohm)
- Heavy duty power supply
- Doubled RCA-XLR input connectors, speaker wire binding posts
- Net dimensions : 483 (w) x 44 (h) x 36 (d) mm

(*) Sine wave is like a siren, it is not an audiophile music experience

Flexible

Solution, CHAMP-4 has the same unique features as the bigger models in APart's range of convection cooled amplifiers. The bridging possibilities and the built-in X-over in this 4-channel amplifier allow you to create many superior sound systems.

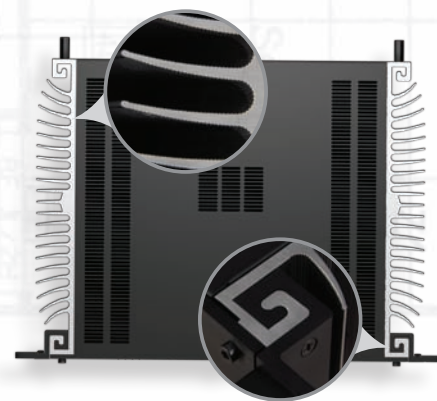
CHAMP-4 QUAD AMPLIFIER



- Flexible 4 channel amplifier
- For small and medium sized areas
- Pure musical sound
- APC avoids clipping and distortion
- Individual level control on front
- Built in X-over

INSTALLER BENEFITS

- Use 2 channels as subwoofer channels and drive the top speakers with the 2 remaining channels. The built in X-over guarantees a superior sound result.
- No ventilator, no noise, no dust problem
- No maintenance or cleanout procedure needed
- unique self-supporting aluminum chassis
- strong detachable 19" brackets



PERFORMANCE CHARACTERISTICS

- Headroom power: 4 x 75 Watts (8 Ohm), 4 x 125 Watts (4 Ohm)
- Sine wave power(*): 4 x 60 Watts (8 Ohm), 4 x 80 Watts (4 Ohm)
- High power, high reliability toroidal transformer
- Low impedance power supply for improved dynamic response
- Net dimensions 483 (w) x 44 (h) x 36 (d) mm

Robust The PA8250 is a compact but powerful 8-zone power amplifier that provides 8 x 250 Watts or 4 x 500 Watts in bridged mode. It is an ideal low-impedance amplifier for multi zone applications. To make installers' lives easier all the speaker terminals are Euroblock. No more soldering in difficult on-site circumstances!

PA8250
8-CHANNEL



- 8-channel power amplifier
- 8 x 150 Watts in 8 ohm, 8 x 250 Watts in 4 Ohm
- Per 2 channels bridgeable: 4 x 500 Watts in 8 Ohm bridged
- Clever Input signal routing by switches on rear panel
- 75Hz Low-cut Filter (defeatable)
- Mono – stereo switches
- Dimensions : 132 (h) x 483 (w) x 484 (d) mm



Worldwide Are you planning a family holiday to a Mediterranean resort this year? Shopping at a local fashion megastore, working out in a fitness club or moving through your local airport on the way to a business meeting? Installers from across the world use APart speakers and electronics in the most challenging projects. Check out these and other case studies on the realizations pages of our website www.apart-audio.com.



Tailor made for small businesses: Concept1 bridges the gap between consumer hifi and pro-audio. Affordable, reliable, and loaded with professional features - available at the touch of a button!.

CONCEPT1
THE PROFESSIONAL SOLUTION

- 4 stereo line inputs
- 1 Mic input - can be mixed with line inputs
- Separate user and expert settings
- Control via RS-232 or optional IR
- Reliable 24/7 : extended limiters inside
- Dimensions : 430 (w) x 88 (h) x 320(d)



CONCEPT1
2X4Ω AMPLIFIER

- 2-zone integrated stereo mixing amplifier
- 2 x 80 Watts @ 4 Ohm

CONCEPT1T
100V AMPLIFIER



- 2-Zone 100V integrated mixing amplifier
- 2 x 60 Watts in 100 V

SETTINGS
USER

- SIMPLE and EASY
- Music Volume Control
- Mic level control
- Bass-Treble tone control

EXPERT

- ADVANCED and SECURED
- Zone mode settings
 - 1 stereo zone
 - 2 volume linked mono zones
 - 2 individual mono zones
- Maximum music & Mic volume
- Gain input adjustment
- Automatic loudness on/off
- Paging on/off per zone



- Removable rack ears included

A Parte

1 UNIT 3 OPERATING MODES

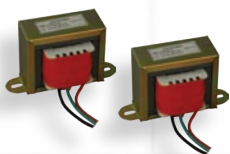
Concept1 gives you the choice between 1 stereo zone, 2 individual zones or 2 individual volume-linked zones*, at the touch of a button!

*In a volume-linked zone system, the volume of both zones goes up or down simultaneously at the turn of the volume button, while maintaining the proportional volume difference between the two zones.



RS 232 CONTROL

CONCEPT1 OPTIONS



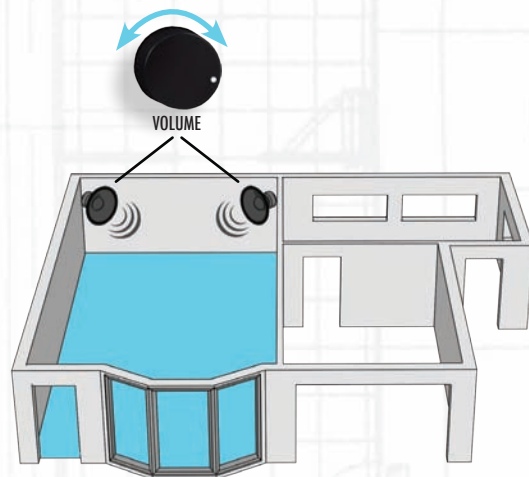
- CONCEPT1T-KIT : transfers a Concept1 into a 100V CONCEPT1T



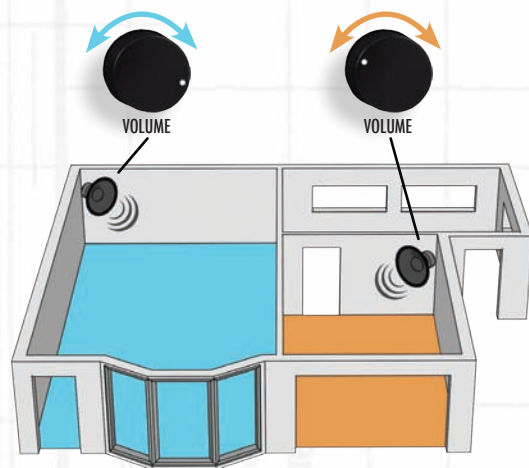
- MICPAT-2 : 2 Zone dynamic paging microphone (see p 70)



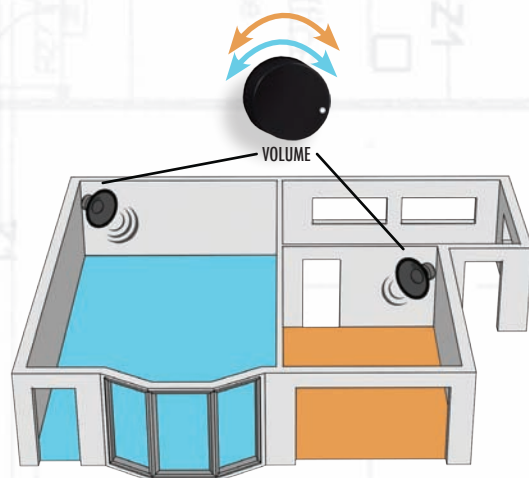
- CONCEPT1-RC : Infrared remote control



• 1 STEREO zone



• 2 individual zones



• 2 individual volume linked zones

Mixing

amplifiers are the heart of many small- and medium sized installation projects. APart brings an exhaustive range with essential and user-friendly features combined into compact units. Whether it is stereo, 100V technology or low-impedance, this series offers the complete and cost-effective solution every installer is looking for!

MA35 COMPACT



- Compact 35 Watts 100 Volt mixing amplifier
- 3 mic (phantom via internal switch), 2 line inputs
- 2 level priority system (VOX & contact closure)
- Integrated 2-tone chime (adjustable volume)
- Operates with 12V DC or 230V AC
- Build-in dynamic limiter (-3 dB)
- Dimensions: 88 (h) x 272 (w) x 286 (d) mm

MA65 COMPLETE



- Same features as MA35
- Compact 65 Watts 100 Volt mixing amplifier
- Operates with 24V DC or 230V AC
- Dimensions: 88 (h) x 272 (w) x 286 (d) mm

MA35-19 BRACKET



- Metal 19" 2U mounting bracket for the MA35 and MA65 amplifier

MA125 POWER



- High quality 125 Watts 100 Volt mixing amplifier
- 4 mic (phantom via switch at the back), 4 line inputs
- 3 level priority system, 24V priority output
- Integrated 2-tone chime (adjustable volume)
- Build-in dynamic limiter (-3dB)
- Dimensions: 88 (h) x 430 (w) x 240 (d) mm

All in one With the MA200 series, APart has created a range of extremely versatile and complete units. A series of 200 Watts mixing amplifiers with 4-zone selection, available with an AM/FM tuner or with CD/MP3 player and tuner combined. This line up has all the features - ready for use in almost every project!

MA200CDR
ALL IN ONE



- High quality 200 Watts 100 Volt mixing amplifier
- Integrated AM/FM tuner and CD/MP3 player
- 4 mic (phantom via internal switch), 4 line inputs
- 3 level priority system, 24V priority output
- Integrated 2-tone chime (adjustable volume)
- 4 output zones (Zone 4: Mic / music selection)
- Build-in dynamic limiter (-3 dB)
- Dimensions: 88 (h) x 430 (w) x 375 (d) mm

MA200R
RECEIVER



- Same as above, with AM/FM tuner only

MA200
BASICS



- Same as above, without any music source

Zoning

the MA246 brings a new dimension to using a 100 V PA mixing amplifier. This 240 watts 6-zone unit can be used stand-alone, or as the core of an expandable sound system. Because it offers independent source selection and volume control for zones 1 and 2-6, you can use it as a full multizoning system. The first in its kind; combined with an external paging amplifier, you can obtain an affordable selective paging system without any compromise.

MA246 INPUTS

- 4 line, sources
- Zone paging mic/line
- 3 line/mic-phantom
- Emergency/telephone
- Chime with level control
- 6 priority levels possible
- Tone control per input
- External paging amplifier input



MA246MR TUNER & MEDIA PLAYER



- 6-zone PA mixing amplifier
- Integrated digital FM/AM tuner - 10 presets
- Media Player, plays MP3, WMA, CD
- USB memory stick slot & SD/MMC cards

MA246R TUNER



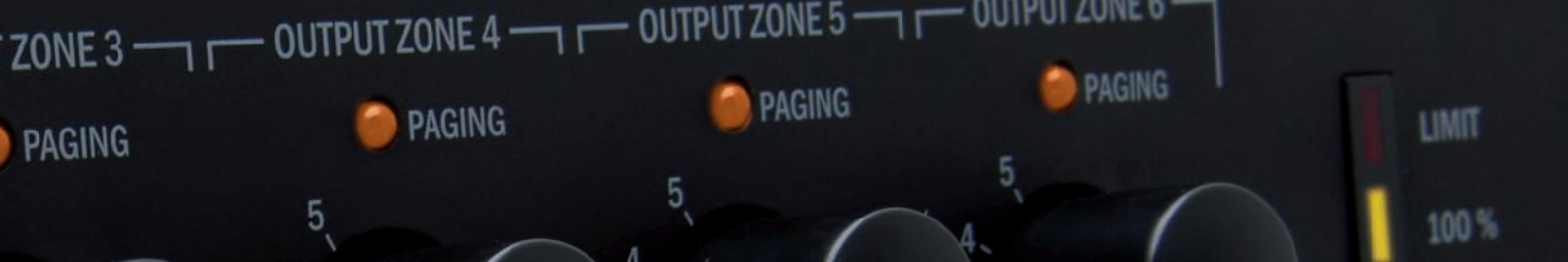
- 6-zone PA mixing amplifier
- Integrated digital tuner - 10 presets

MA246 AMPLIFIER



- 6-zone 100 Volts PA mixing amplifier
- Removable rack ears included





MA246 OUTPUTS

Zone 1

- Selective paging possible
- Independent zone for use with external amp
- Individual source selection and volume control

Zone 2 - 6

- 240 watts internal amplifier
- Can have a different line source than zone 1 amplified zone
- Individual volume control per zone
- Zone 2-3-4 : 100 V
- Zones 5 & 6 : 70 V for 'silent areas'



MICPAT-6 MICROPHONE



- Selective 6-zone paging microphone.
- Connect Up to 5 pcs MICPAT-6 on 1 MA246
- RJ45 connector for zone selection, EUROBLOCK for mic signal.

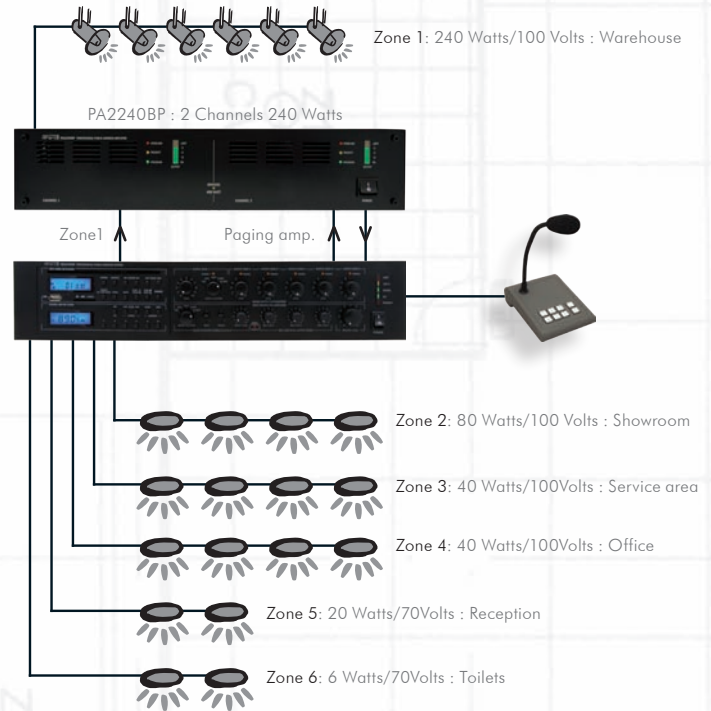
MICPAT-2 MICROPHONE



- With use of MICPAT2, MA246 allows you to merge zones into 2 major paging groups.

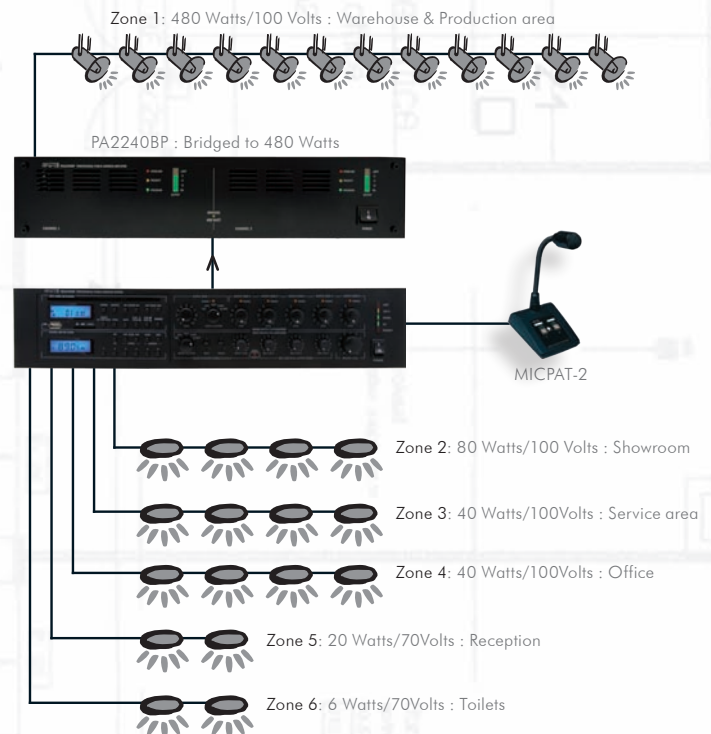
COMPACT 480 WATTS 6-ZONE SYSTEM

- Selective paging with selective music interruption.
- Radio "GAGA" in the warehouse, radio "SERIOUS" elsewhere.



POWERFUL 720 WATTS 2-ZONE SYSTEM

- Selective paging in 2 assignable paging groups.
- Total control : 2 major zones, one with 5-sub zones.



Endurance

In addition to the mixing and pre-amplifier series, the APart engineering team came up with fully equipped constant voltage power amplifiers that will meet all of your requirements. Besides high reliability and the basic functions of a power amplifier the PA240P excels above similar products by the inclusion of its extra technical features, possibilities and protection. In brief, it's the model you can rely on!

PA240P
ENDURANCE

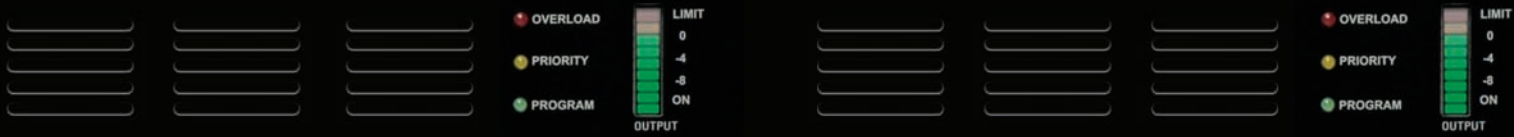
100VOLT



- Metal cover to avoid unauthorized volume and tone control adjustment of the amplifier



- Ultra reliable 240 Watts 100 Volt power amplifier
- Line input & adjustable priority line input
- 24V priority output
- Operates with 24V DC or 230V AC
- Bass – treble tone control
- Dimensions: 88 (h) x 433 (w) x 360 (d) mm



Finally an ultra-reliable and versatile 100V power amplifier is introduced to complete the APart 100V mixing amplifier and power amplifier series. The PA2240BP is fully equipped and can be used as a single (bridge mode) channel 480 Watts or dual channel 2 x 240 Watts power amplifier.

Its multi-functional use together with the technical features available will make the PA2240BP your favorite constant voltage power amplifier!

PA2240BP
1 OR 2-CHANNEL 



- 2-channel 100 Volt power amplifier
- 2 x 240 Watts, bridgeable into 1 x 480 Watts 70-100V
- Extra priority input per channel
- Volume and tone control per channel
- 24V output power available when priority is activated
- Operates with 230V AC or 24V DC
- Detachable 19" brackets included



- 2-channel 100 Volt power amplifier
- 2 x 240 Watts, bridgeable into 1 x 480 Watts 70-100V
- Extra priority input per channel
- Volume and tone control per channel
- 24V output power available when priority is activated
- Operates with 230V AC or 24V DC
- Detachable 19" brackets included

◀◀ FOLDER SELECT ▶▶ ◀◀ REV TRACK FFW ▶▶ STOP PLAY/PAUSE EJECT



Two units

one goal : PCR3000R is a DAB+/FM-RDS tuner, CD-player and memory card media player, PC1000R is a CD-player and media player only. APart brings the tuner/media player that will finally allow you to ban cheap consumer Hi-Fi from your projects!

PCR3000R

TUNER & MEDIA PLAYER



RS 232 CONTROL



• 19" brackets included

- DAB - RDS FM tuner + CD player + MP3 from CD, SD-card or USB memory stick
- New technology guarantees perfect radio reception, both with DAB and FM
- RS232 and IR remote control (included)
- Combined and individual output with gain control for tuner and CD/MP3 section
- Coaxial and optical digital audio output for CD section
- Dimensions : 44 (h) x 483 (w) x 280 (d) mm



PC1000R

MEDIA PLAYER



RS 232 CONTROL



• 19" brackets included

- CD player and MP3 from CD, SD-card or USB memory stick
- RS232 and IR remote control (included)
- Coaxial and optical digital audio output
- XLR balanced and RCA audio outputs
- Double USB and SD slots (front and back)
- Dimensions : 44 (h) x 483 (w) x 280 (d) mm



PCD-REM

REMOTE CONTROL

- Optional IR remote control enables DVD functionality on PCR3000R and PC1000R
- Dimensions: 196 (h) x 48 (w) x 14 (d) mm





Proficiency

APart's all new PR1000R and PR4000R mark a new era in tuner functionality! Highly recommended for use with Concept1, they are loaded with all the professional features. They are designed for 24/7 reliability. And best of all: they'll convince your customers to finally choose a professional system and avoid cheap, unreliable hifi consumer sets!

PR1000R RDS TUNER



• 19" brackets included



IR handheld remote control

- Professional 19" AM/FM RDS tuner
- RS232 and infrared control
- RDS information available on RS232 interface
- Galvanically separated antenna to avoid hum
- Comes with IR handheld remote and FM antenna
- Output attenuator on rear panel
- Dimensions: 44(h) x 483 (w) x 280 (d) mm

PR4000R QUAD RDS TUNER



• 19" brackets included



IR handheld remote control

- Four independent FM-RDS tuners in one 19" unit
- RS232 and infrared control
- RDS information available on RS232 interface
- Improved reception by DSP-technology
- Comes with IR handheld remote and FM antenna
- 4 output attenuators on rear panel
- Dimensions: 44(h) x 483 (w) x 280 (d) mm

Both the PR1000R and PR4000R now have RDS data available via the RS232 serial port. A huge added value for your (residential) projects!



Instant recognition A comprehensive assortment of volume controls and accessories completes the APart product range. These items are designed and selected to fit in seamlessly with our main product range.



VOLUME CONTROL

Page 76-77



PAGING MICROPHONES

Page 78



ACCESSORIES

Page 79



INSTALLER TOOLS

Page 79



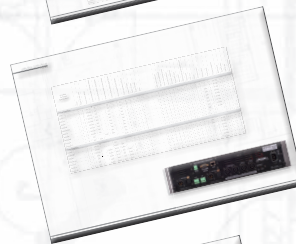
CABLES

Page 79



LOUDSPEAKER COMPARISON TABLE

Page 80-81



AMPLIFIER COMPARISON TABLE

Page 82-83



INDEX

Page 84

ACCESSORIES
VOLUME CONTROL

Complete

is the range of euro volume controls. Their inconspicuous design allows a perfect integration with your light switches and power plugs. Being available in a constant voltage and a low impedance version ensures a solution in almost every application. Different cover plates are available in order to match the UK standard. If you need more remote control for more functions, then you can reconsider your system design with the PM1122 (page50) ZONE4 (page52).

CONTROL EURO SERIES

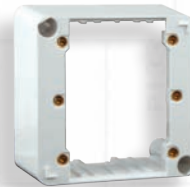
MOUNTING IN- / ON-WALL



Fig1



Fig2



•E-MODON



•E-MODIN


MODEL	100Volt 	Stereo	24V Priority	Inverted Priority feature	Power	Steps	H (mm)	W (mm)	D built- in (mm)	E-MOD IN	E-MOD ON	Fig
E-VOL20	•		•	•	20W	12	80	80	32	•	•	1
E-VOL20-BL	•		•	•	20W	12	80	80	32	•	NA	2
E-VOL40	•		•		40W	12	80	80	45	•	•	1
E-VOL60	•		•		60W	12	80	80	45	•	•	1
E-VOL60-BL	•		•		60W	12	80	80	45	•	NA	2
E-VOL120	•		•		120W	12	80	80	46	NA	•	1
E-VOLST		•			2x40W @ 4Ω	10	80	80	46	NA	•	1
E-VOLST-BL		•			2x40W @ 4Ω	10	80	80	46	NA	NA	2
19-VOL660	•		•		6 x 60W	12	88	483	230	NA	NA	4
19-VOL6120	•		•		6 x 120W	12	88	483	230	NA	NA	4



Fig4



Great expectations : add that little extra touch of refined class to your home or business interior. The NIKO series of volume controls has been developed to fit the coverplates and the the timeless design, the warm character and soft lines of Belgian NIKO controllers.

CONTROL
NIKO SERIES



- Creme
- White
- Sterling
- Anthracite



•E-MODIN



•N-MODIN

Model	NIKO style	Colour	Stereo	100 Volt	Steps
N-VOLST-CO	Original	○	•		5+0
N-VOLST-WO	Original	○	•		5+0
N-VOLST-W	Intense	○	•		5+0
N-VOLST-SLV	Intense	●	•		5+0
N-VOLST-BL	Intense	●	•		5+0
N-VOL30-CO	Original	○		•	10+0
N-VOL30-WO	Original	○		•	10+0
N-VOL30-W	Intense	○		•	10+0
N-VOL30-SLV	Intense	●		•	10+0
N-VOL30-BL	Intense	●		•	10+0

•N-VOL30

- Type : NIKO volume controller
- Loudspeaker : 100 Volt mono
- Music power : 30 Watts
- Protected against overload
- 24V priority set's volume on max.
- Mounting : screw and clamp
- Cable : max. 2.5 mm²

•N-VOLST

- Type : NIKO volume controller
- Loudspeaker : stereo / 4, 8 of 16 Ω
- Music power : 2x20 Watt
- Protected against overload
- Mounting : screw and clamp
- Cable : max. 2.5 mm²



Solution

APart has all the accessories for your sound system in-house. We offer a range of four table type paging microphones and a CB-type microphone, especially designed to function plug-and-play with our electronics. APart makes the life of installers and end users a lot easier!

MICPA MICROPHONE



• MICPAT-D

- Robust table type, dynamic microphone
- Clear voice, no feedback
- Toggle switch: Talk - Off - Continuous talk
- No batteries, no power supply required
- With 3m cable and DIN5 connector



• MICPAT-2

- Robust 2-zone table type, dynamic microphone
- Push-to-talk button per zone with LED indication
- No batteries, no power supply required
- Perfect fit to APart Concept1, MA246
- With 5m cable, open wire



• MICPAT-4

- Elegant 4-zone table type directional condenser microphone
- Selection button per zone with LED-indicator
- PTT with green/red led busy indicator
- Perfect fit to APart ZONE4 pre-amplifier
- With 5 m cable and CAT5 RJ45 connector provided



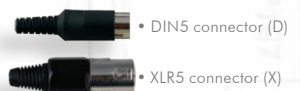
• MICPAT-6

- Compact 6-zone table type directional condenser microphone
- Selection button per zone with LED-indicator
- PTT with green/red led busy indicator
- Perfect fit to APart MA246 6-zone mixing amplifier
- With 5m cable, CAT5 RJ45 connector and line cable provided



• MICPACB-D / MICPACB-X

- Sturdy CB type dynamic paging microphone
- Ideal for close talking
- On/off by pressing the non-latching switch
- DIN5 connector (D) or XLR-5 (X)
- Wall mount included



Colour

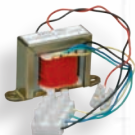
Do you want your speakers to match your interior design, disappear in the background? Or do you want to accentuate them with an extravagant colour? It's up to you ... From a minimum of 12 pieces you can have every speaker painted into the RAL colour you want. We make sure that the paint quality is just as excellent as the sound you are listening to!

PAINT CUSTOM COLOUR

- PAINTCMM
- PAINTCM
- PAINTCAB-6
- PAINTCAB-8
- PAINTCOL
- PAINTMP
- PAINTMPLT




TRANSFORMERS ACCESSORIES



- T20 
- 8Ω to 100 Volt transformer
- 20 - 10 - 5 - 2.5 Watts power taps



- T60 
- 8Ω to 100 Volt transformer
- 60 - 30 - 15 - 6 Watts power taps

INSTALLER UTILITY ACCESSORIES



- BUZZSTOP-MKIII
- Converts any line, mic or tel signal into any line level output
- Converts from unbalanced to balanced and vice versa
- The audio transformer isolation avoids ground loops (Hummm)
- Dimensions: 44 (h) x 241 (w) x 60 (d) mm

CABLES ACCESSORIES



- CE2E2 : euroblock2 – euroblock2
- CE3E3 : euroblock3 – euroblock3
- CE3XM : euroblock3 – XLR3 male
- CE3RY : euroblock3 – RCA cinch stereo
- CRYRY : RCA – RCA cinch stereo
- CXFXM : XLR3 female – XLR3 female
- CXFRY : XLR3 female – RCA cinch stereo
- MBAC: Short 230V AC power cord

LOUDSPEAKER COMPARISON TABLE

Loudspeaker Technical Specifications	Outside diameter or height dimensions in mm	Outside width in mm	depth dimension in mm	colour dimension in mm	Speaker type: D=Dual cone, Z=2-way, DC=Dual Coil, S=single, M=Multiple, CD=Comp Driver	Woofer size in inches	Woofer construction	Tweeter size in inches	Fixing type included	Black	White
Circular Ceiling Speakers											
CM3T	105		70	82	D	3,0	paper		2 springs	•	•
CM4T	135		74	105	D	4,0	paper		3 springs	•	•
CM6T	205		80	183	2	6,5	poly	1	3 screws	•	•
CM6SF	217		148	205	D	6,5	paper		3 springs	•	•
CM6E	205		70	183	D	6,5	paper		3 screws	•	•
CM5E	178		53	160	D	5,0	paper		2 clamps	•	•
CM608	205		80	183	2	6,5	poly	1	3 screws	•	•
CM20T	205		80	183	2	6,5	poly	1	3 screws	•	•
CM100B	244		90	220	2	8,0	poly	1	3 screws	•	•
CMX20T	244		90	220	2	8,0	paper	1	3 screws	•	•
CM6QFT	237		65	216	D	6,5	paper		Spiral QF	•	•
CM4	135		100	105	D	4,0	paper		2 springs	•	•
CMSUB8	246		106	226	DC	8,0	paper		3 screws	•	•
CMBB	230		80							•	•
Square Ceiling Speakers											
CMS508	171	171	145	145	2	5,25	poly	1	4 screws	•	•
CMS15T	171	171	145	145	2	5,0	poly	1	4 screws	•	•
CMS608	201	201	75	176 x 176	2	6,5	poly	1	4 screws	•	•
CMS20T	201	201	75	176 x 176	2	6,5	poly	1	4 screws	•	•
Rectangular Ceiling Speakers											
CMR15T	220	147	60	192 x 118	2	4,0	paper	1	4 screws	•	•
CMR608	237	170	70	210 x 143	2	5,0	paper	1	4 screws	•	•
CMR5	237	170	65	210 x 143	D	5,25	paper		4 screws	•	•
CMR20T	237	170	65	210 x 143	2	5,25	paper	1	4 screws	•	•
CMRQ108	296	196	78	272 x 172	2	6,50	kevlar		4 screws	•	•
CMRQ108C	176	346	69		3	2 x 6.50	kevlar		4 screws	•	•
CMRBB	235	167	85							•	•
CMRBBi	214	150	85							•	•
Cabinet Speakers											
MASK2	130	146	310		S	2,5	paper		w/c bracket	•	•
MASK4	223	129	130		2	4,2	paper	1	intellimount	•	•
MASK4T	223	129	130		2	4,2	paper	1	intellimount	•	•
MASK6	315	175	195		2	6,5	paper	1	intellimount	•	•
MASK6T	315	175	195		2	6,5	paper	1	intellimount	•	•
MASK8	411	250	250		2	8	paper	1	u bracket	•	•
MASK8F	411	250	250		2	8	paper	1	u bracket	•	•
SDQ3T	152	105	110		2	3,2	poly	1	swivel bracket	•	•
SDQ5	245	180	154		2	5,25	poly	1	u bracket	•	•
SDQ5T	245	180	154		2	5,25	poly	1	u bracket	•	•
SDQ8	381	283	243		2	8	poly	1	u bracket	•	•
SDQ8T	381	283	243		2	8	poly	1	u bracket	•	•
SM6	202	142	72		S	5	paper			•	•
SM6V	202	142	72		S	5	paper			•	•
SM6VP	202	142	72		S	5	paper			•	•
SMB6	202	142	72		S	5	paper		u bracket	•	•
SMB6V	202	142	72		S	5	paper		u bracket	•	•
SMB6VP	202	142	72		S	5	paper		u bracket	•	•
Powered Cabinet Speakers											
SDQ5P/IR (2x30W)	243	180	148		2	5,25	poly	1	u bracket	•	•
Subwoofers											
SUBA165 (140W)	362	261	405		S	8				•	•
SUB2400	700	352	450		DC	2 x 10				•	•
SUB2200	619	298	385		DC	10				•	•
SUBLIME	420	470	120		D	8			wall bracket	•	•
SUBTITLE	450	500	120		S	8			wall bracket	•	•
Specials											
ROCK20	260	200	280		2	6,5	poly	1			
ROCK608	260	200	280		2	6,5	poly	1			
SPH16	180				2	5,25		1			•
SPH20	254				D	8	paper				•
Sound Columns											
COLW41	555	100	83		M	4 x 3.3		1	'L' brackets	•	•
COLW81	974	100	83		M	8 x 3.3		1	'L' brackets	•	•
COLW101	1010	100	83		M	10 x 3.3		1	'L' brackets	•	•
COLWBRA										•	•
COLS41	400	66	66		M	4 x 2		1	'L' brackets	•	•
COLS81	613	66	66		M	8 x 2		1	'L' brackets	•	•
COLS101	723	66	66		M	10 x 2		1	'L' brackets	•	•
COLS141	940	66	66		M	14 x 2		1	'L' brackets	•	•
COLSBRA										•	•
Music Projectors and Horns											
MP16-G	138		200		D	5,5	paper		u bracket		
MP26-G	170		240		D	6,5	paper		u bracket		
MPH30-G	180		200		D	5,25	paper		u bracket		
H10-G	140		192		CD				u bracket		
H20-G	200		232		CD				u bracket		
H30LT-G	208	285	290		CD				u bracket		
MPLT32-G	250	360	290		2	6,5		1	u bracket		
MPLT62-G	250	360	290		2	6,5		1	u bracket		
MPBD20-G	135	270			D	5	paper		u bracket		

	Silver	Grey	100Vrms transformer power taps (in Watts)	Impedance (in ohms)	Low impedance power (in Watts)	spl 1W/1M in dB	spl MAX/1M in dB	Frequency response (in Hz)	Chassis construction type (Metal, Plastic, Wood)	Grille construction (Aluminium, Plastic, Steel)	IP rating	Find the product on this page	Type nr.
	•		6-3-1,5	16	20	87	93	120-18k	M	AL	55	18	CM3T
	•		6-3-1,5	16	30	88	95	90-19k	M	AL	55	18	CM4T
			6-3-1,5	16	40	92	95	60-20k	P	AL		21	CM6T
			6-3-1,5	8	---	93	100	70-18k	M	M		19	CM6SF
	•		6-3-1,5	8	---	93	97	70-20k	P	M		20	CM6E
			6-3	---	---	91		100-18k	P	S		20	CM5E
	•			8	60	92	104	60-20k	P	AL		21	CM608
			20-10-5-2,5	16	60	92	99	60-20k	P	AL		21	CM20T
				8	60	93	107	50-20k	P	AL		23	CM1008
	•		20-10-5-2,5	16	100	93	100	50-20k	P	AL		23	CMX20T
			6-3-1,5	16	40		96		P	S		22	CM6QFT
				16	15	85	99	100-20k	M	AL	50	19	CM4
				2x8	2x80	88		50-200	P	AL		23	CM5UB8
			on wall or in wall back box for CM6T, CM6E, CM20T, CM608									21	CM8B
				8	50	90	101	60-20k	P	AL		26	CM508
			15-10-5-2,5	16	50	90	95	60-20k	P	AL		26	CM515T
				8	40	92	104	60-20k	P	AL		26	CM5608
			20-10-5-2,5	16	40	91	99	60-20k	P	AL		26	CM520T
			15-10-5-2,5	16	60		95		M	M		27	CMR15T
				8	40	92		60-20k	P	AL		27	CMR608
			6-3-1,5	8	6	90		70-18k	P	AL		27	CMR5
			20-10-5-2,5	16	40	92	95	60-20k	P	AL		27	CMR20T
				8 / 12	120	85,4	107	45-25k	P	S		25	CMRQ108
				8	100	85	105	55-25k	P	S		25	CMRQ108C
			on wall back box for CMR608, CMR5, CMR20T									27	CMR8B
			in wall back box for CMR608, CMR5, CMR20T									27	CMR8Bi
	•			8	50	87	98	120-20k	P			29	MASK2
				8	70	89	104	80-20k	P		64	31	MASK4
	•		20-10-5-2,5	16	70	89	98	80-20k	P		64	31	MASK4T
				8	200	92	110	65-20k	P		64	32	MASK6
			60-30-15-6	16	200	91	105	65-20k	P		64	32	MASK6T
				8	300	93	116	60-20k	W		40	34	MASK8
				8	300	93	112	50-25k	W		40	34	MASK8F
	•		6-3-1,5	16	40	86	90	90-20k	P		50	40	SDQ3T
	•			8	80	90	106	70-20k	P		54	40	SDQ5
	•		30-15-6-3	16	80	90	100	70-20k	P		50	40	SDQ5T
				8	160	94	110	45-20k	P		40	41	SDQ8
			60-30-15-6	16	180	94	107	45-20k	P		40	41	SDQ8T
	•		6-3-1,5	---	---	92		200-20k	P	S	50	42	SM6
	•		6-3-1,5	---	---	92		200-20k	P	S	50	42	SM6V
	•		6-3-1,5	---	---	92		200-20k	P	S	50	42	SM6VP
	•		6-3-1,5	---	---	92		200-20k	P	S	50	42	SMB6
	•		6-3-1,5	---	---	92		200-20k	P	S	50	42	SMB6V
	•		6-3-1,5	---	---	92		200-20k	P	S	50	42	SMB6VP
				---	---	91	100	45-20k	P			40	SDQ5PIR
				4 or 16	2 x 400	99		30-180	W			36	SUBA165
				---	2 x 200	95		45-150	W			35	SUB2400
				2 x 8	2 x 80	85		45-150	W			35	SUB2200
				4	125	85		50-200	W			36	SUBLIME
				4	125	85		50-200	W			36	SUBTILE
	•		20-10-5-2,5	8	32	105	105	60-20k	P		64	43	ROCK20
	•			8	60	106		60-20k	P		64	43	ROCK608
			16-8-4	8	25	92	100	80-20k	P		53	43	SPH16
			20-10-5	8	30	99	109	80-18k	P		63	43	SPH20
			40	16	60	97	108	190-20k	M		66	46	COLW41
			80	8	120	98	115	170-20k	M		66	46	COLW81
			100	8	14	99	116	160-20k	M		66	46	COLW101
			optional tilt and rotate bracket for COLW sound columns									46	COLWBRA
			20	8	30	95	98	250-20k	M		66	47	COLS41
			30	16	40	96	100	250-20k	M		66	47	COLS81
			40	8	60	97	105	200-20k	M		66	47	COLS101
			60	8	80	98	109	195-20k	M		66	47	COLS141
			optional tilt and rotate bracket for COLS sound columns									47	COLSBRA
	•		16-10-5	---	---	95	103	100-18k	P		56	44	MP16-G
	•		26-20-10	---	---	96	107	90-19k	P		56	44	MP26-G
	•		30-20-15-10-5	---	---	101	108	120-15k	P		54	44	MPH30-G
	•		10-5-2,5-1,25	8	20	101	109	400-10k	P		66	45	H10-G
	•		20-10-5-2,5	8	30	105	116	280-9,5k	P		66	45	H20-G
	•		30-15-7,5-3,75	8	45	110	120	350-9k	P		66	45	H30LT-G
	•		32-16-8-4	---	---	106	113	75-18k	P		66	45	MPLT32-G
	•		62-32-16-8	---	---	106	115	75-18k	P		66	45	MPLT62-G
	•		20-10-5	---	---	93		150-20k	P	AL	64	44	MPBD20-G



AMPLIFIER COMPARISON TABLE

Amplifier Technical Specifications	19inch	Height (in rack units)	Power source (Volts)	Output Power RMS 100Volts (Watts)	Output Power RMS 4 ohms (Watts)	Output Power RMS 8 ohms (Watts)	Output Power RMS bridged (Watts)	Music Program Power (Watts)	Output impedance (Ohms)	Output 100 Volts	Output 70 Volts	Output 50 Volts	Zones
Mixing Amplifiers													
MA35	n	2	240/12	35		35		40	8	y	y	n	1
MA65	n	2	240/24	65		65		80	8	y	y	n	1
MA125	y	2	240/24	125		125		150	8	y	y	y	1
MA200	y	2	240/24	200		200		240	8	y	y	y	4
MA200R	y	2	240/24	200		200		240	8	y	y	y	4
MA200CDR	y	2	240/24	200		200		240	8	y	y	y	4
MA246	y	2	240/24	240		240		290	8	y	y	y	6
MA246R	y	2	240/24	240		240		290	8	y	y	y	6
MA246MR	y	2	240/24	240		240		290	8	y	y	y	6
CONCEPT1	y	2	240		2x80	2x60		100	4	n	n	n	2
CONCEPT1T	y	2	240	2x60				2x75	n	y	n	n	2
Power Amplifiers													
PA240P	y	2	240/24			240			4	y	y	y	1
PA2240BP	y	2	240/24			2x240	480		4	y	y	y	2
PA8250	y	3	240/24		8x250	8x150	4x500		4	n	n	n	8
CHAMP ONE	y	2	240		2x450	2x300	900	2x600	4	n	n	n	2
CHAMP-2	y	1	240		2x180	2x120	350	2x350	2,7	n	n	n	2
CHAMP-4	y	1	240		4x80	4x60	130	4x125	4	n	n	n	4
CHAMP-3D	y	2	240		2x350 + 1x1100@2Ω	2x225 + 1x1100@2Ω	N/A	2x370 + 1x1350@2Ω	4	n	n	n	3

MIC inputs balanced	MIC inputs unbalanced	Inputs with phantom power	Line input balanced	Line input unbalanced	Paging MIC input	Tone control	RS232 (serial communication port)	Mute switch	VOX mute	Chime	Emergency input	Priority output	Priority levels	Frequency response	AM/FM tuner	CD/MP3 player	USB/SD slot	Fan or Convection	Find the product on this page	Type Nr.
3	0	3	0	2	y	y	n	1	1	y	n	n	2	60-18k	n	n	n	F	66	MA35
3	0	3	0	2	y	y	n	1	1	y	n	n	2	60-18k	n	n	n	F	66	MA65
4	0	4	0	4	y	y	n	1	1	y	y	24V	3	40-22k	n	n	n	F	66	MA125
4	0	4	0	4	y	y	n	1	1	y	y	24V	3	40-25k	n	n	n	F	67	MA200
4	0	4	0	4	y	y	n	1	1	y	y	24V	3	40-25k	y	n	n	F	67	MA200R
4	0	4	0	4	y	y	n	1	1	y	y	24V	3	40-25k	y	y	n	F	67	MA200CDR
4	0	3	3	4	y	y	n	7	1	y	y	24V	6	40-25k	n	n	n	F	68	MA246
4	0	3	3	3	y	y	n	7	1	y	y	24V	6	40-25k	y	n	n	F	68	MA246R
4	0	3	3	2	y	y	n	7	1	y	y	24V	6	40-25k	y	y	y	F	68	MA246MR
1	0	0	0	4	y	y	y	2	n	n	n	n	0		n	n	n	C	64	CONCEPT1
1	0	0	0	4	y	y	y	2	n	n	n	n	0		n	n	n	C	64	CONCEPT1T
0	0	0	1	0	0	y	n	1	0	n	y	24V	1	35-22k	n	n	n	F	70	PA240P
0	0	0	2	0	0	y	n	2	0	n	y	24V	1	35-22k	n	n	n	F	71	PA2240BP
0	0	0	8	8	0	n	n	0	0	n	n	n	0	20-20k	n	n	n	F	62	PA8250
0	0	0	2	2	0	n	n	0	0	n	n	n	0	10-50k	n	n	n	C	58	CHAMP ONE
0	0	0	2	2	0	n	n	0	0	n	n	n	0	10-50k	n	n	n	C	60	CHAMP-2
0	0	0	0	4	0	n	n	0	0	n	n	n	0	20-40k	n	n	n	C	61	CHAMP-4
0	0	0	2	0	0	y	y	0	0	n	n	n	0	10-24k	n	n	n	C	56	CHAMP-D



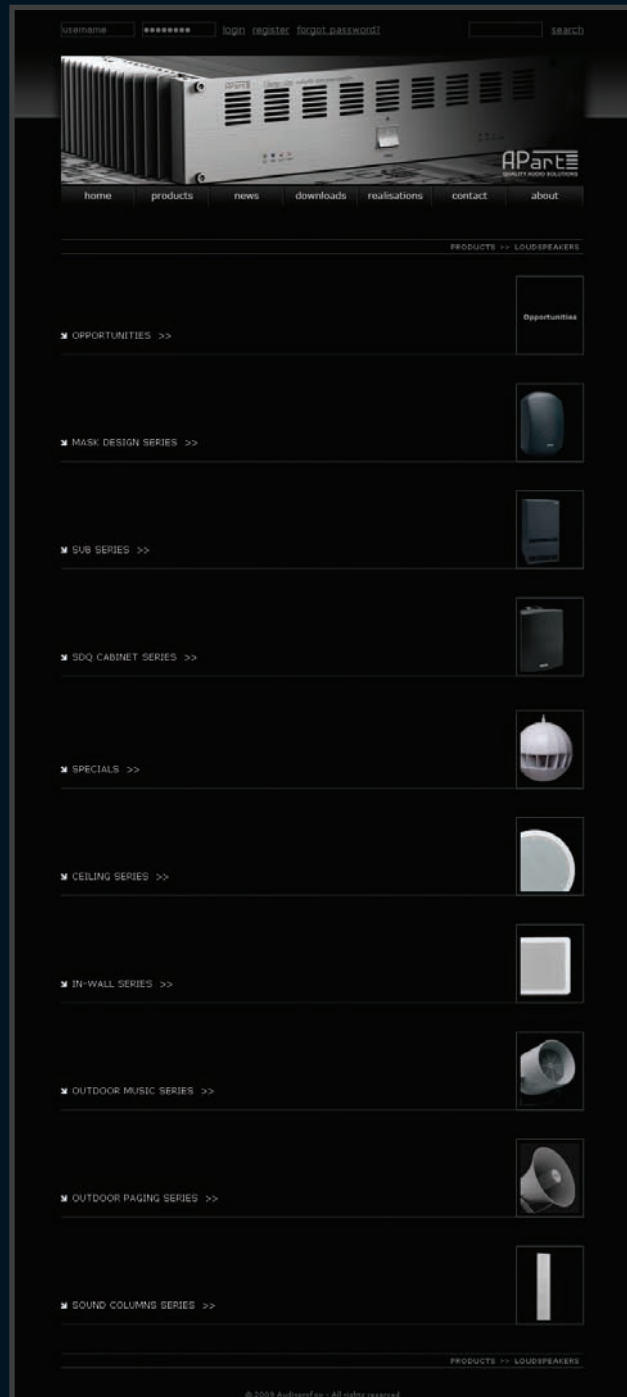
INDEX TABLE

PRODUCT	PAGE	PRODUCT	PAGE	PRODUCT	PAGE	PRODUCT	PAGE
19-VOL6120	76	CMS5BBI	26	MASK8-BL	34	RJ45-SPLIT	53
19-VOL660	76	CMS608	26	MASK8-W	34	ROCK20	43
ACP	38	CMS6BBI	26	MASK8F-BL	34	ROCK608	43
ACPL	38	CMSUB8	23	MASK8F-W	34	SAFCAB6	33
AMBISET-BL	10	CMX20T	23	MASKL-BL	33	SDQ3T-BL	40
AMBISET-W	10	CMX20T-BL	23	MASKL-W	33	SDQ3T-SLV	40
AUDIOLOCK	55	CMX20T-SLV	23	MASKV-BL	33	SDQ3T-W	40
BARSET-BL	14	COLS101	47	MASKV-W	33	SDQ5-BL	40
BARSET-W	14	COLS141	47	MASKW-BL	33	SDQ5-W	40
BB1	51	COLS41	47	MASKW-W	33	SDQ5P-BL	39
BB2	51	COLS81	47	MBAC	79	SDQ5P-W	39
BB11	51	COLSBRA	47	MEETINGSET-BL	9	SDQ5PIR-BL	38
BB12	51	COLW101	46	MEETINGSET-W	9	SDQ5PIR_W	38
BISTROSET-BL	11	COLW41	46	MICPACB-D	78	SDQ5T-BL	40
BISTROSET-W	11	COLW81	46	MICPACB-X	78	SDQ5T-SLV	40
BUZZSTOP-MKIII	79	COLWBRA	46	MICPAT-2	78	SDQ5T-W	40
CE2E2	79	CONCEPT1	64	MICPAT-D	78	SDQ8-BL	41
CE3E3	79	CONCEPT1-RC	65	MICPAT-4	78	SDQ8-W	41
CE3RY	79	CONCEPT1-TKIT	65	MICPAT-6	78	SDQ8T-BL	41
CE3XM	79	CONCEPT1T	64	MP16-G	44	SDQ8T-W	41
CHAMP-2	60	CRYRY	79	MP26-G	44	SHOPSETI	8
CHAMP-3D	56	CXFRY	79	MPBD20-G	44	SHOPSETO	8
CHAMP-4	61	CXFXM	79	MPH30-G	44	SM6-G	42
CHAMP-ONE	58	E-MOD-IN	76	MPLT32-G	45	SM6-W	42
CHAMP-ONE SLV	58	E-MOD-ON	76	MPLT62-G	45	SM6V-G	42
CM1008	23	E-VOL120	76	N-MODIN	77	SM6V-W	42
CM20T	21	E-VOL20	76	N-VOL30-BL	77	SM6VP-G	42
CM20T-BL	21	E-VOL20-BL	76	N-VOL30-CO	77	SM6VP-W	42
CM20T-SLV	21	E-VOL40	76	N-VOL30-SLV	77	SMB6-G	42
CM3T	18	E-VOL60	76	N-VOL30-W	77	SMB6-W	42
CM3T-BL	18	E-VOL60-BL	76	N-VOL30-WO	77	SMB6V-G	42
CM3T-SLV	18	E-VOLST	76	N-VOLST-BL	77	SMB6V-W	42
CM4	19	E-VOLST-BL	76	N-VOLST-CO	77	SMB6VP-G	42
CM4T	18	H10-G	45	N-VOLST-SLV	77	SMB6VP-W	42
CM4T-BL	18	H20-G	45	N-VOLST-W	77	SPH16	43
CM4T-SLV	18	H30LT-G	45	N-VOLST-WO	77	SPH20	43
CM5E	20	INTELLI-MOUNT	33	NTM-1	79	STFLOOR	35
CM608	21	LOUNGESET-BL	12	PA2240BP	71	STSUB	35
CM608-BL	21	LOUNGESET-W	12	PA240P	70	STT	35
CM608-SLV	21	MA125	66	PAB250	62	SUB2201-BL	35
CM6E	20	MA200	67	PC1000R	73	SUB2201-W	35
CM6E-BL	20	MA200CDR	67	PCD-REM	72	SUB2400	35
CM6E-SLV	20	MA200R	67	PCR3000R	72	SUB2400-W	35
CM6QFT	22	MA246	68	PIR-EMIT	54	SUBA165	36
CM6SF	19	MA246MR	68	PIR-REC	54	SUBA165-W	36
CM6T	21	MA246R	68	PIR-REM	54	SUBLIME-BL	36
CMBB	21	MA35	66	PIR7600	54	SUBLIME-W	36
CMR15T	27	MA35-19	66	PM1122	50	SUBTILE-BL	36
CMR20T	27	MA65	66	PM1122-INT	51	SUBTILE-W	36
CMR4BBI	27	MASK2-BL	29	PM1122R	51	SWINGSET-BL	13
CMR5	27	MASK2-W	29	PM1122RL	51	SWINGSET-W	13
CMR608	27	MASK4-BL	31	PM1122W-BL	50	T20	79
CMRBB	27	MASK4-SLV	31	PM1122W-SLV	50	T60	79
CMRBBI	27	MASK4-W	31	PM1122W-W	50	ZONE4	52
CMRQ108	25	MASK4T-BL	31	PM1122WR	51	ZONE4R	53
CMRQ108BBI	25	MASK4T-SLV	31	PM7400MKII	54		
CMRQ108C	25	MASK4T-W	31	PR1000R	73		
CMRQ108CBBI	25	MASK6-BL	32	PR4000R	73		
CMS15T	26	MASK6-W	32	PUBSET-BL	15		
CMS20T	26	MASK6T-BL	32	PUBSET-W	15		
CMS508	26	MASK6T-W	32	PXQ2215	55		

Do you need advice on how to make a choice between 100V and low impedance? Are you looking for technical sheets, new products, or the latest update of our catalogue?

www.apart-audio.com

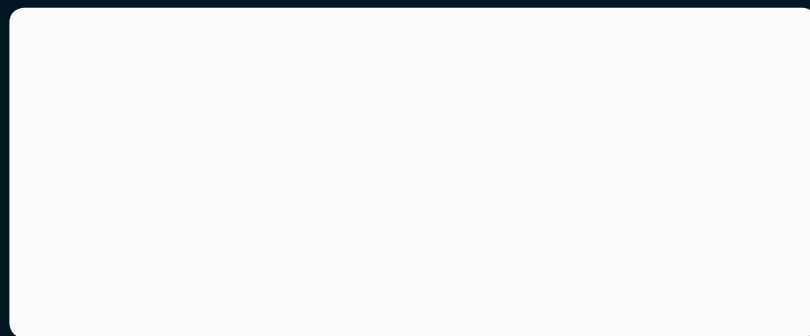
Our website is the gateway to everything that happens at APart. Check regularly for news and updates!



Technical questions: mail to tech.support@apart-audio.com

Product suggestions or remarks: mail to suggestions@apart-audio.com

Thank you for being APart.



WWW.APART-AUDIO.COM

INFO@APART-AUDIO.COM

Tel. +32 (0)3 448.01.60

Fax. +32 (0)3 448.01.59

AUDIOPROF nv
Industriepark Brechtsebaan 8 bus1
BE-2900 Schoten
BELGIUM