

Visual Productions Hardware installation instructions

Step 1

Connect the box to your PC using the USB cable.



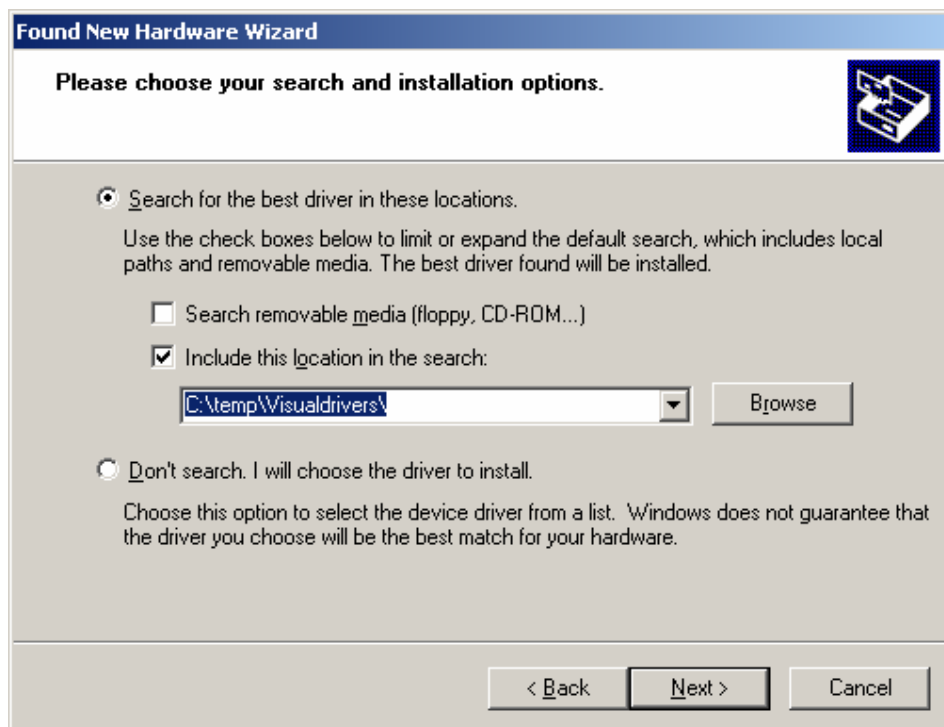
New hardware has been detected and Windows will search for the driver.

Step 2



Select *Install from a list or specific location*.

Step 3



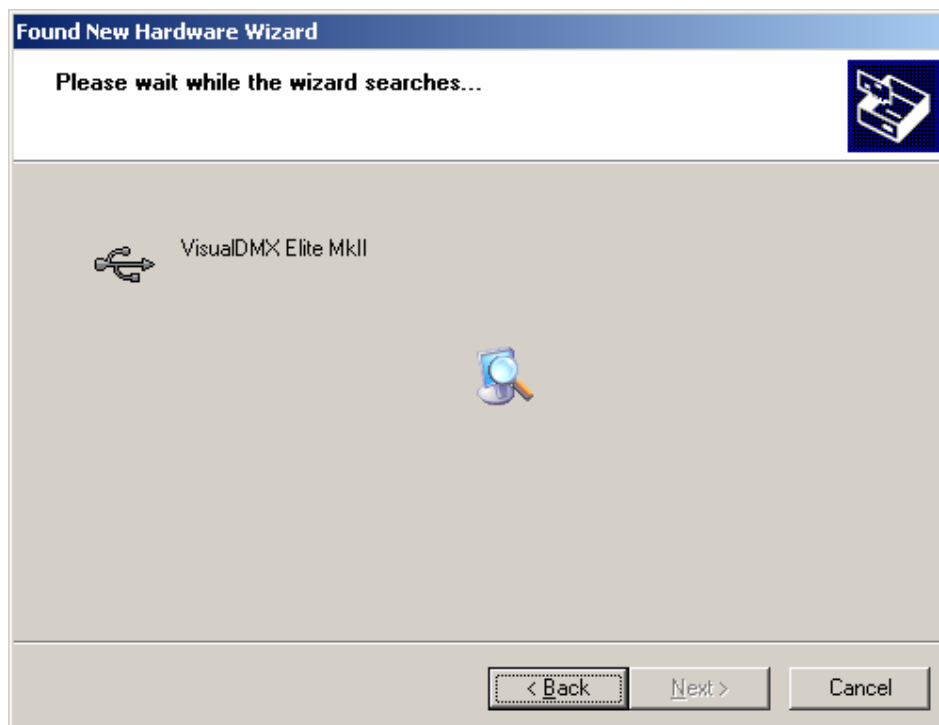
Make sure *Search for the best drivers in these locations* and *Include this location in the search* are checked.

Click *Browse* to select the drivers location:

- The drivers are installed with each software-release, in the "Drivers" folder (e.g. 'C:\Program Files\Visual Productions\VisualDMX\Drivers').
- If you downloaded the drivers from our website, navigate to the folder where you extracted the archive and select the folder 'Drivers'.

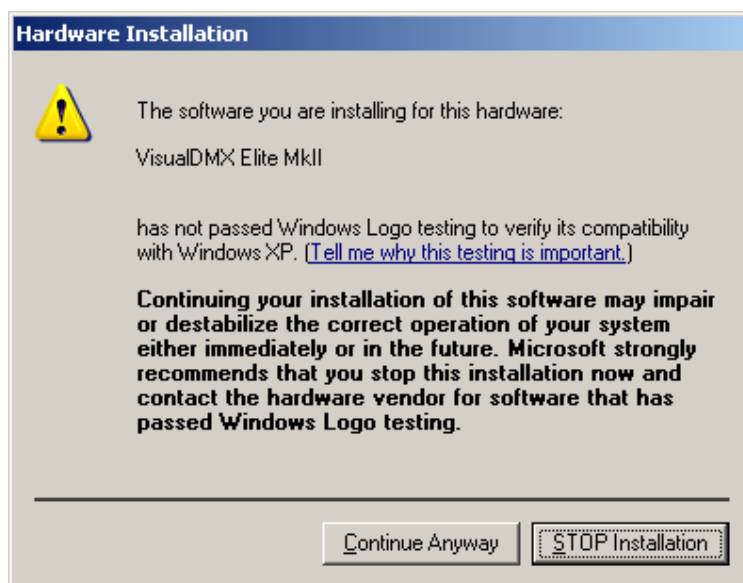
Click *Next*.

Step 4



Windows will search for the drivers in the selected location.

Step 5



When this security warning dialog box appears, click *Continue Anyway*.

Step 6

Click *Finish*.

The device is now fully installed and ready to be used by our software.