



### Features

- High grade, long life
- Wide operating temperature range
- T-bar lever



## RODEC High Grade Slide Potentiometer

### Electrical Characteristics

Standard Resistance Range ..... 1K ohms to 1 megohm  
 Standard Resistance Tolerance...  $\pm 20\%$   
 End Resistance ..... 1 ohm max.  
 Insulation Resistance @ 500 VDC ..... 100 megohms min.  
 Dielectric Withstanding Voltage ..... 1000 VAC  
 Tracking Error .....  $\pm 3$  dB  
 Standard Taper ..... Linear, Audio  
 Power Rating  
 Linear ..... 0.5 watt  
 Audio ..... 0.25 watt  
 Slider Noise ..... 60 mV max.

### Environmental Characteristics

Operational Life ..... 100,000 cycles  
 TR Shift .....  $\pm 15\%$   
 Operating Temperature Range .....  $-10^\circ\text{C}$  to  $+55^\circ\text{C}$   
 Resistance to Solder Heat.....  $\pm 5\%$

### Mechanical Characteristics

Mechanical Travel..... Length  $\pm 0.5$  mm  
 Operating Force ..... 60 gf  
 Stop Strength ..... 5 kgf min.  
 Shaft Axial Force ..... 10 kgf min.  
 Shaft Wobble..  $2(2 \times L/25)$  mm p-p max.  
 Soldering Condition  
 Manual .....  $300^\circ\text{C} \pm 5^\circ\text{C}$  for 3 sec.  
 Wave .....  $260^\circ\text{C} \pm 5^\circ\text{C}$  for 5 sec.  
 Wash ..... Not recommended

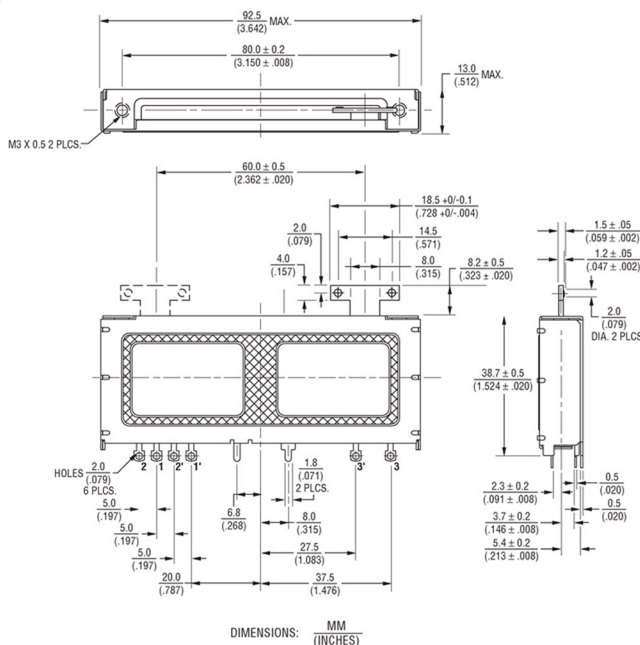
### Applications

- Professional mixing consoles
- Professional outboard gear

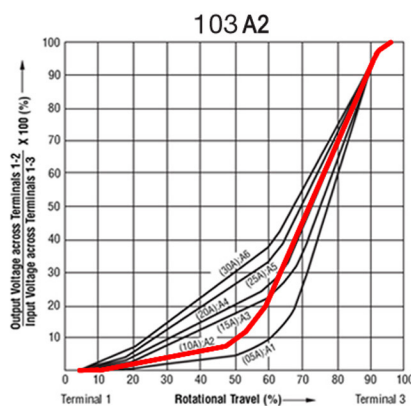
Resistance (Ohms)	Resistance Code
10,000	103A2

### Product Dimensions

60 mm Length of Travel  
 Lever End Style "T"

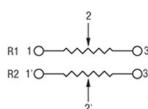


### Taper



### Schematic

Dual Gang



\*RoHS Directive 2002/95/EC Jan 27 2003 including Annex Specifications are subject to change without notice. Customers should verify actual device performance in their specific applications.

**PRODUCT CODE**  
**94 001 0081**