

# PRODUCT GUIDE

2009



**ROBE.**



ROBE lighting is dedicated to providing the very best and most elegant lighting solutions for the professional entertainment, leisure and architectural industries.

A well balanced mix of innovation, imagination and experience has led to the development of a wide range of well-engineered products appropriate to all sectors. Robe's products have set standards for others to follow and earned their own reputation for being reliable and robust. They have also established themselves as an invaluable creative tool for designers, operators and programmers of all genres of lighting - from clubs to cathedrals.

This Product Guide illustrates Robe lighting's commitment to excellence and to the design and production of top quality products with real long term investment value.

Here you will find detailed, useful, easy-to-read information on the entire Robe range that will help guide you to the right product for your specific application.

Robe products are available through a world-wide dealer network.

Robe lighting welcomes your feedback to help it stay at the forefront of innovation and style.

Moving Heads .....	6 - 57	●
Scanners .....	58 - 73	●
Colour Changers .....	74 - 83	●
Lighting Effects .....	84 - 97	●
Digital Technology .....	98 - 107	●
RED Series.....	108 - 119	●
LED Video Wall.....	120 - 123	●
Media Spinners .....	124 - 131	●
Controllers.....	132 - 147	●
Fog and Haze.....	148 - 153	●
Lighting Tools .....	154 - 181	●
Accessories.....	182 - 193	●
Lamps .....	194 - 199	●
Contacts and Distributors.....	200 - 201	○

ColorSpot 2500E AT .....	8	●
ColorWash 2500E AT .....	10	●
ColorSpot 1200E AT .....	12	●
ColorSpot 1200 AT .....	14	●
ColorWash 1200E AT .....	16	●
ColorWash 750 AT Tungsten .....	18	●
ColorSpot 700E AT .....	20	●
ColorWash 700E AT .....	22	●
ColorSpot 575E AT .....	24	●
ColorSpot 575 AT .....	26	●
ColorWash 575E AT .....	28	●
ColorWash 575E AT Zoom .....	30	●
ColorWash 575 AT .....	32	●
ColorWash 575 AT Zoom .....	34	●
ColorSpot 250 AT .....	36	●
ColorWash 250 AT .....	38	●
ColorSpot 170 AT .....	40	●
ClubSpot 500 CT .....	42	●
ClubWash 500 CT .....	44	●
ClubSpot 300 CT .....	46	●
ClubWash 300 CT .....	48	●
ClubSpot 250 CT .....	50	●
ClubWash 250 CT .....	52	●
ClubSpot 160 CT .....	54	●
ClubSpot 150 CT .....	56	●



# ColorSpot 2500E AT



The ColorSpot 2500E AT comes to the market as the most powerful Robe moving light fixture. It is a moving head featuring the MSR GOLD 1200 FastFit lamp and a 1400W electronic ballast. These components enable the ColorSpot 2500E AT's extremely powerful light output, with a zoom range of 10-30°. The mechanical dimmer/shutter system provides very smooth dimming. The fixture was designed specifically for large stages, big concert halls, outdoor applications and all professional installations where a large light output is needed.

## ● Source

- Lamp: MSR GOLD 1200 FastFit
- Base: PGJX50
- Control: Automatic and remote on/off
- Ballast: Electronic

## ● Electrical Specification

- Wiring options: 208/230/250V, 50/60Hz
- Power consumption: 1760VA at 230V/50Hz

## ● Mechanical Specification

- Height: 638 mm (25.1") - head in horizontal position
- Width: 536 mm (21.1")
- Depth: 678 mm (26.7")
- Weight: 42.5 kg (93.7 lbs)

## ● Thermal

- Maximum ambient temperature : 40°C (104°F)
- Maximum surface temperature: 135°C (275°F)

## ● Gobos

- Outside diameter: 37.5 +0/-0.25 mm
- Image diameter: 31.5 mm
- Thickness: 1.1 mm up to 5 mm in rotating slots
- Material: High-temperature borofloat glass

## ● Prisms and Effects

- Outside diameter: 47+0/-0.3 mm
- Thickness: Up to 5 mm in rotating slots (up to 8 mm in the center)

## ● Control and Programming

- Protocol: USITT DMX-512, RDM support
- Control channels: 24 or 32
- 3 DMX control modes
- Setting & Addressing: ROBE Navigation System (RNS)
- Display: Blue/white LCD graphic
- Pan/Tilt resolution: 16-bit
- Gobo indexing: 8- or 16-bit
- Prism indexing: 8- or 16-bit
- Dimmer: 8- or 16-bit
- Movement control: Tracking and vector
- Ethernet port: Art-Net protocol, ready for ACN
- Data in/out: Locking 3-pin & 5-pin XLR
- Stand-alone operation
- 3-editable programs, each up to 99 steps

## ● Electromechanical Effects

- Cyan: 0 - 100%
- Magenta: 0 - 100%
- Yellow: 0 - 100%
- CTO: 0 - 100%
- Colour wheel: 6 replaceable "SLOT&LOCK" colours + open
- Gobo wheel 1: 6 rotating, indexable, replaceable "SLOT&LOCK" dichroic glass gobos + open
- Gobo wheel 2: 6 rotating, indexable, replaceable "SLOT&LOCK" dichroic glass gobos + open
- Iris: Motorized, stepless
- Effect wheel: 4 rotating, indexable, replaceable "SLOT&LOCK" prisms and effects + open
- Frost effect: Separate, variable
- Dimmer/Shutter: Full range dimming and variable strobe effect
- Focus: 2 m - infinity
- Zoom: 10° - 30°
- Pan: 530°
- Tilt: 260°

## ● Rigging

- Mounting points: 8 pairs of ¼-turn locks
- Fastening system: ROBE's own 2x Omega clamps
- Fixation option: Pan/Tilt-lock mechanism

## ● Optional Accessories

- Remote control IR



# ColorWash 2500E AT



The ColorWash 2500E AT is the sister fixture of the ColorSpot 2500E AT and it is the most powerful Robe moving wash light fixture. It features Philips MSR GOLD 1200 FastFit lamp and 1400W electronic ballast. This fixture comes complete with CMY colour mixing system, variable CTO, 2 colour wheels and combined dimmer/shutter unit. The linear zoom has a standard range of 7° - 44°. The fixture was designed specifically for large stages, big concert halls, outdoor applications and all professional installations where large light output is needed

## ● Source

- Lamp: MSR Gold 1200 FastFit
- Base: PGJX50
- Control: Automatic and remote on/off
- Ballast: Electronic

## ● Optical System

- High luminous glass reflector
- Zoom angle from 7° to 44°

## ● Electrical Specification

- Wiring options: 208/230/250V, 50/60Hz
- Power consumption: 1670VA at 230V/50Hz

## ● Mechanical Specification

- Height: 641 mm (25.2") - head in horizontal position
- Width: 542 mm (21.3")
- Depth: 545 mm (21.5")
- Weight: 41 kg (90.4 lbs)

## ● Thermal

- Maximum ambient temperature (Ta): 40°C (104°F)
- Maximum surface temperature: 130°C (266°F)

## ● Control and Programming

- Protocol: USITT DMX-512, RDM support
- Control channels: 17, 21, 23, 24 and 30
- DMX channels: 5 protocol modes
- Setting & Addressing: ROBE Navigation System (RNS)
- Built-in demo sequences
- Display: Blue/white LCD graphic
- Pan/Tilt resolution: 16-bit
- Color wheel 1 positioning: 8- or 16-bit
- Color wheel 2 positioning: 8- or 16-bit
- Zoom: 8- or 16-bit
- Dimmer: 8- or 16-bit
- Controllable speed of fans
- Movement control: Tracking or vector
- Built-in analyzer for easy fault finding
- Ethernet port: Art-Net protocol, ready for ACN
- Data in/out: Locking 3-pin XLR & 5-pin XLR
- Stand-alone operation
- 3-editable programs, each up to 99 steps

## ● Electromechanical Effects

- Cyan: 0 - 100%
- Magenta: 0 - 100%
- Yellow: 0 - 100%
- CTO: 0 - 100%
- Colour wheel 1: 6 replaceable „SLOT&LOCK“ colours + open
- Colour wheel 2: 6 replaceable „SLOT&LOCK“ colours + open
- Dimmer/Shutter: Full range dimming and variable strobe effect, Electronic strobing „ZAP“
- Zoom: 7° - 44° (standard front Fresnel lens), 87° (wide-angle front lens), 6° - 35° (front PC lens)
- Pan: 530°
- Tilt: 280°

## ● Rigging

- Mounting points: 8 pairs of ¼-turn locks
- Fastening system: ROBE's own 2x Omega clamps
- Fixation option: Pan/Tilt-lock mechanism

## ● Optional Accessories

- Remote control IR
- Module of lens D200 PC
- Top Hats



# ColorSpot 1200E AT



The ColorSpot 1200E AT is an electronic ballast version of ColorSpot 1200 AT, which adds even more features like flicker-free operation, enhanced light output, extended lamp life, power-saving mode for economy and reduced weight.

## ● Source

- Lamp: 1200W short arc discharge
- Base: GY22
- Approved model: Philips MSR 1200 SA
- Control: Automatic and remote on/off
- Ballast: Electronic

## ● Electrical Specification

- Wiring options: 100/120/208/230/250V, 50-60Hz
- Power consumption: 1600VA at 230V/50Hz
- Automatic voltage and frequency selection for lamp

## ● Mechanical Specification

- Height: 619 mm (24.4") - head in horizontal position
- Width: 536 mm (21.1")
- Depth: 616 mm (24.3")
- Weight: 42 kg (92.6 lbs)

## ● Thermal

- Maximum ambient temperature (T<sub>a</sub>): 40°C (104°F)
- Maximum surface temperature: 135°C (275°F)

## ● Gobos

- Outside diameter: 37.5+0/-0.25 mm
- Image diameter: 31.5 mm
- Thickness: 1.1 mm up to 5 mm in rotating slots
- Material: High-temperature borofloat glass

## ● Prisms and Effects

- Outside diameter: 47 +0/-0.3 mm
- Thickness: Up to 5 mm in rotating slots (up to 8 mm in the center)

## ● Control and Programming

- Protocol: USITT DMX-512, RDM support
- Control channels: 24 or 32
- 3 DMX control modes
- Setting & Addressing: ROBE Navigation System (RNS)
- Display: Blue/white LCD graphic
- Pan/Tilt resolution: 16-bit
- Gobo indexing: 8- or 16-bit
- Prism indexing: 8- or 16-bit
- Dimmer: 8- or 16-bit
- Movement control: Tracking and vector
- Ethernet port: Art-Net protocol, ready for ACN
- Data in/out: Locking 3-pin & 5-pin XLR
- Lamp power save mode while black-out
- Stand-alone operation
- 3-editable programs, each up to 99 steps

## ● Electromechanical Effects

- Cyan: 0 - 100%
- Magenta: 0 - 100%
- Yellow: 0 - 100%
- CTO: 0 - 100%
- Colour wheel: 6 replaceable "SLOT&LOCK" colours + open
- Gobo wheel 1: 6 rotating, indexable, replaceable "SLOT&LOCK" dichroic glass gobos + open
- Gobo wheel 2: 6 rotating, indexable, replaceable "SLOT&LOCK" dichroic glass gobos + open
- Iris: Motorized, stepless
- Effect wheel: 4 rotating, indexable, replaceable "SLOT&LOCK" prisms and effects + open
- Frost effect: Separate, variable
- Dimmer/Shutter: Full range dimming and variable strobe effect, ZAP effect (electronic strobing)
- Focus: 2 m - infinity
- Zoom: 13° - 42°
- Pan: 530°
- Tilt: 280°

## ● Rigging

- Mounting points: 8 pairs of ¼-turn locks
- Fastening system: ROBE's own 2x Omega clamps
- Fixation option: Pan/Tilt-lock mechanism

## ● Optional Accessories

- Remote control IR



# ColorSpot 1200 AT



The ColorSpot 1200 AT is designed as the ultimate creative tool for large theatre, TV and live shows and for installations in multi-purpose venues and large clubs. The fixture uses a powerful Philips 1200 SA discharge lamp light source. This is further boosted by a high quality super-efficient optical system, making the ColorSpot 1200 AT one of the brightest moving fixtures currently on the market. Major features include a versatile CMY colour mixing system, variable CTO plus an additional colour wheel, 12 rotating indexable, replaceable dichroic glass gobos on two wheels offering 48 gobo combinations, iris, 4 rotating prisms and effects, variable frost, an incredibly flexible 13 – 42 degree linear zoom, remote focus, dimmer and shutter. Its progressive colour temperature correction system – from 5600K to 3200K is designed for use in television and film applications.

## ● Source

- Lamp: 1200W short arc discharge
- Base: GY22
- Approved model: Philips MSR 1200 SA
- Control: Automatic and remote on/off
- Ballast: Magnetic

## ● Electrical Specification

- Wiring options: 208/230/250V, 50/60Hz;
- Power consumption: 1600VA at 230V/50Hz

## ● Mechanical Specification

- Height: 619 mm (24.4") - head in horizontal position
- Width: 536 mm (21.1")
- Depth: 616 mm (24.3")
- Weight: 51.5 kg (113.5 lbs)

## ● Thermal

- Maximum ambient temperature (Ta): 40°C (104°F)
- Maximum surface temperature: 135°C (275°F)

## ● Gobos

- Outside diameter: 37.5+0/-0.25 mm
- Image diameter: 31.5 mm
- Thickness: 1.1 mm up to 5 mm in rotating slots
- Material: High-temperature borofloat glass

## ● Prisms and Effects

- Outside diameter: 47+0/-0.3 mm
- Thickness: Up to 5 mm in rotating slots (up to 8 mm in the center)

## ● Control and Programming

- Protocol: USITT DMX-512, RDM support
- Control channels: 24 or 32
- 3 DMX control modes
- Setting & Addressing: ROBE Navigation System (RNS)
- Display: Blue/white LCD graphic
- Pan/Tilt resolution: 16-bit
- Gobo indexing: 8- or 16-bit
- Prism indexing: 8- or 16-bit
- Dimmer: 8- or 16-bit
- Movement control: Tracking and vector
- Ethernet port: Art-Net protocol, ready for ACN
- Data in/out: Locking 3-pin & 5-pin XLR
- Stand-alone operation
- 3-editable programs, each up to 99 steps

## ● Electromechanical Effects

- Cyan: 0 - 100%
- Magenta: 0 - 100%
- Yellow: 0 - 100%
- CTO: 0 - 100%
- Colour wheel: 6 replaceable "SLOT&LOCK" colours + open
- Gobo wheel 1: 6 rotating, indexable, replaceable "SLOT&LOCK" dichroic glass gobos + open
- Gobo wheel 2: 6 rotating, indexable, replaceable "SLOT&LOCK" dichroic glass gobos + open
- Iris: Motorized, stepless
- Effect wheel: 4 rotating, indexable, replaceable "SLOT&LOCK" prisms and effects + open
- Frost effect: Separate, variable
- Dimmer/Shutter: Full range dimming and variable strobe effect
- Focus: 2 m - infinity
- Zoom: 13° - 42°
- Pan: 530°
- Tilt: 280°

## ● Rigging

- Mounting points: 8 pairs of ¼-turn locks
- Fastening system: ROBE's own 2x Omega clamps
- Fixation option: Pan/Tilt-lock mechanism

## ● Optional Accessories

- Remote control IR





# ColorWash 1200E AT



The ColorWash 1200E AT is a powerful moving head wash light that comes complete with a CMY colour mixing system; variable CTO; 2 colour wheels - each with 6 easily replaceable slots for colours and effects; a combined dimmer/shutter and many more features. The ColorWash 1200E AT zoom has a range of 10 - 87° depending on the lens type used. The electronic ballast enables features like flicker-free operation, extended lamp life and power-saving mode. The large LCD display - highly successful on Robe's ColorSpot 1200 AT profile fixture, makes the operation of the ColorWash 1200E AT quick and easy. An Ethernet connection offers additional connectability. The ColorWash 1200E AT is an ideal tool for large theatres, live and television shows, and for all types of installations from multi-purpose venues to large clubs.

## ● Source

- Lamp: 1200W short arc discharge
- Base: GY22
- Approved model: Philips MSR 1200 SA
- Control: Automatic and remote on/off
- Ballast: Electronic

## ● Electrical Specification

- Wiring options: 100/120/208/230/250V, 50/60Hz
- Power consumption: 1480VA at 230V/50Hz

## ● Mechanical Specification

- Height: 621 mm (24.5") - head in horizontal position
- Width: 536 mm (21.1")
- Depth: 620 mm (24.4")
- Weight: 41 kg (90.4 lbs)

## ● Thermal

- Maximum ambient temperature: 40°C (104°F)
- Maximum surface temperature: 135°C (275°F)

## ● Control and Programming

- Protocol: USITT DMX-512, RDM support
- Control channels: 17, 21, 23, 24, 30
- DMX channels: 5 protocol modes
- Built-in demo sequences
- Display: Blue/white LCD graphic
- Pan/Tilt resolution: 16-bit
- Color wheel 1 positioning: 8- or 16-bit
- Color wheel 2 positioning: 8- or 16-bit
- Zoom: 8- or 16-bit
- Dimmer: 8- or 16-bit
- Controllable speed of fans
- Movement control: Tracking or vector
- Built-in analyzer for easy fault finding
- Ethernet port: Art-Net protocol, ready for ACN
- Data in/out: Locking 3-pin XLR & 5-pin XLR
- Stand-alone operation
- 3-editable programs, each up to 99 steps

## ● Electromechanical Effects

- Cyan: 0 - 100%
- Magenta: 0 - 100%
- Yellow: 0 - 100%
- CTO: 0 - 100%
- Colour wheel 1: 6 replaceable "SLOT&LOCK" colours + open
- Colour wheel 2: 6 replaceable "SLOT&LOCK" colours + open
- Dimmer/Shutter: Full range dimming and variable strobe effect
- Zoom: 10° - 87° depending on the lens type used
- Pan: 530°
- Tilt: 280°

## ● Rigging

- Mounting points: 8 pairs of ¼-turn locks
- Fastening system: ROBE's own 2x Omega clamps
- Fixation option: Pan/Tilt-lock mechanism

## ● Optional Accessories

- Remote control IR
- Module of lens D200 PC
- Top Hats



# ColorWash 750 AT Tungsten



The ColorWash 750AT Tungsten's potent 750W halogen lamp makes ideal for theatre, TV and architectural markets, requiring colour temperatures of 3200K. The beam path is uniform and without hotspots, it has warm colour tones and smooth electronic dimming. The fixture has a 1-12 FPS strobe effect, full CMY + CTB colour mixing system, a rotating beam shaper and a linear zoom ranging between 8° and 45°.

## ● Source

- Lamp: Halogen Hi-Bright Lamp
- Base: PGJX50
- Approved model: Philips Hi-Bright 750 FastFit
- Control: Automatic and remote on/off

## ● Optical System

- Dichroic glass reflector for maximising the light efficiency
- Front Fresnel lens of diameter of 200 mm
- Beam angle: 8° - 45°

## ● Electrical Specification

- Power supply: Electronic auto-ranging
- Input voltage range: 110-240V/ 50/60Hz
- Power consumption: 900 VA at 230V/50Hz

## ● Mechanical Specification

- Height: 597 mm (23.5") - head in horizontal position
- Width: 514 mm (20.2")
- Depth: 499 mm (19.7")
- Weight: 30.9 kg (68 lbs)
- Fixation option: Pan/Tilt-lock mechanism

## ● Thermal

- Maximum ambient temperature: 40°C (104°F)
- Maximum surface temperature: 120°C (248°F)

## ● Control and Programming

- Setting & Addressing: ROBE Navigation System (RNS)
- Protocol: USITT DMX-512, RDM support
- Control channels: 18, 20, 21 or 23
- 5 DMX protocol modes
- 3-editable programs, each up to 99 steps
- Stand-alone operation
- Display: Blue/white LCD graphic
- Pan/Tilt resolution: 16-bit
- Movement control: Tracking and vector
- Beam shaper: 8- or 16-bit
- Zoom: 8- or 16-bit
- Mechanical dimmer: 8- or 16-bit
- Ethernet port: Art-Net protocol, ready for ACN
- Data in/out: Locking 3-pin & 5-pin XLR
- Built-in analyser for easy fault finding

## ● Electromechanical Effects

- Cyan: 0 - 100%
- Magenta: 0 - 100%
- Yellow: 0 - 100%
- CTB: 0 - 100%
- Beam shaper: Indexable, continuous rotation in both directions at different speeds
- Mechanical Dimmer/Shutter: Full range dimming and variable strobe effect
- Electronic Dimmer: Full fine dimming
- Motorized zoom
- Pan: 530°
- Tilt: 280°

## ● Rigging

- Mounting points: 4 pairs of ¼-turn locks
- 2 x Omega bracket with ¼-turn quick locks
- Safety chain/rope attachment point

## ● Optional Accessories

- Module of front wide-angle lens D200
- Remote Control IR
- Top Hats



# ColorSpot 700E AT



The ColorSpot 700E AT marks a new series of Robe 700W moving head fixtures. Featuring the MSR GOLD 700 FastFit lamp, it is ideal for all professional applications and installations. It also offers a full CMY and CTO colour mixing systems, a colour wheel with 7 replaceable "SLOT&LOCK" dichroic filters; a static gobo wheel with 9 replaceable "SLOT&LOCK" gobos and a rotating gobo wheel with 7 replaceable "SLOT&LOCK" gobos; a replaceable animation wheel and a rotating 3-facet prism. The zoom range is 15° - 51° and there's also dimmer, shutter, strobe effects.

- **Source**
  - Lamp: Compact high-pressure metal halide lamp
  - Base: PGJX50
  - Approved model: Philips MSR Gold 700 FastFit
  - Control: Automatic and remote on/off
  - Ballast: Electronic
- **Optical System**
  - Dichroic glass reflector for maximising the light efficiency
  - Beam angle: 15° - 51°
- **Electrical Specification**
  - Power supply: Electronic auto-ranging
  - Input voltage range: 100-240V, 50/60Hz
  - Power consumption: 930 VA at 230V/50Hz
- **Mechanical Specification**
  - Height: 597 mm (23.5") - head in horizontal position
  - Width: 514 mm (20.2")
  - Depth: 499 mm (19.7")
  - Weight: 32 kg (70.6 lbs)
  - Fixation option: Pan/Tilt-lock mechanism
- **Thermal**
  - Maximum ambient temperature: 40 °C (104°F)
  - Maximum surface temperature: 120 °C (248°F)

- **Rotating Gobos**
  - Outside diameter: 26.8 mm
  - Image diameter: 22 mm
  - Thickness: 1.1 mm (max. thickness = 4mm)
  - Recommended glass: High temperature borofloat or better glass
- **Control and Programming**
  - Setting & Addressing: ROBE Navigation System (RNS)
  - Protocol: USITT DMX-512, RDM support
  - Control channels: 26, 28, 31, 34 or 36
  - 5 DMX protocol modes
  - 3-editable programs, each up to 99 steps
  - Stand-alone operation
  - Display: Blue/white LCD graphic
  - Pan/Tilt resolution: 16-bit
  - Movement control: Tracking and vector
  - Colour wheel positioning: 8- or 16-bit
  - Static gobo wheel positioning: 8- or 16-bit
  - Rotating gobos: 8- or 16-bit
  - Iris: 8- or 16-bit
  - Frost: 8- or 16-bit
  - Zoom: 8- or 16-bit
  - Dimmer: 8- or 16-bit
  - Ethernet port: Art-Net protocol, ready for ACN
  - Data in/out: Locking 3-pin & 5-pin XLR
  - Built-in analyser for easy fault finding
- **Electromechanical Effects**
  - Cyan: 0 - 100%
  - Magenta: 0 - 100%
  - Yellow: 0 - 100%
  - CTO: 0 - 100%
  - Colour wheel: 7 replaceable "SLOT&LOCK" dichroic filters + open
  - Static Gobo wheel: 9 replaceable "SLOT&LOCK" gobos + open
  - Rotating Gobo wheel: 7 rotating, indexable, replaceable "SLOT&LOCK" glass gobos + open
  - Animation wheel: Replaceable, variable rotation angle, continuous rotation in both directions at different speeds
  - Iris: Motorized, stepless
  - Prism: 3-facet indexable prism rotating in both directions at different speeds
  - Frost effect: Separate, variable
  - Dimmer/Shutter: Full range dimming and variable strobe effect, Electronic strobbing "ZAP"
  - Motorized zoom and focus
  - Pan: 530°
  - Tilt: 280°
- **Rigging**
  - Mounting points: 4 pairs of ¼-turn locks
  - 2 x Omega bracket with ¼-turn quick locks
  - Safety chain/rope attachment point
- **Optional Accessories**
  - Remote Control IR
  - Animation Wheels



# ColorWash 700E AT



The ColorWash 700E AT is the first Wash fixture using the MSR GOLD 700 FastFit lamp in the Robe range. This powerful moving head offers a full CMY + CTO colour mixing system, a colour wheel with 7 replaceable "SLOT&LOCK" dichroic filters, a rotating beam shaper and a linear zoom range of 6° - 45°.

## ● Source

- Lamp: Compact high-pressure metal halide lamp
- Base: PGJX50
- Approved model: Philips MSR Gold 700 FastFit
- Control: Automatic and remote on/off
- Ballast: Electronic

## ● Optical System

- Dichroic glass reflector for maximising the light efficiency
- Front Fresnel lens of diameter of 200 mm
- Beam angle: 6° - 45°

## ● Electrical Specification

- Power supply: Electronic auto-ranging
- Input voltage range: 100-240V, 50/60Hz
- Power consumption: 890VA at 230V/50Hz

## ● Mechanical Specification

- Height: 597 mm (23.5") - head in horizontal position
- Width: 514 mm (20.2")
- Depth: 499 mm (19.7")
- Weight: 30.4 kg (67 lbs)
- Fixation option: Pan/Tilt-lock mechanism

## ● Thermal

- Maximum ambient temperature: 40 °C (104°F)
- Maximum surface temperature: 120 °C (248°F)

## ● Control and Programming

- Setting & Addressing: ROBE Navigation System (RNS)
- Protocol: USITT DMX-512, RDM support
- Control channels: 18, 20, 21, 22, 23, 24
- 6 DMX protocol modes
- 3-editable programs, each up to 99 steps
- Stand-alone operation
- Display: Blue/white LCD graphic
- Pan/Tilt resolution: 16-bit
- Movement control: Tracking and vector
- Colour wheel positioning: 8- or 16-bit
- Beam shaper: 8- or 16-bit
- Zoom: 8- or 16-bit
- Dimmer: 8- or 16-bit
- Ethernet port: Art-Net protocol, ready for ACN
- Data in/out: Locking 3-pin & 5-pin XLR
- Built-in analyser for easy fault finding

## ● Electromechanical Effects

- Cyan: 0 - 100%
- Magenta: 0 - 100%
- Yellow: 0 - 100%
- CTO: 0 - 100%
- Colour wheel: 7 replaceable "SLOT&LOCK" dichroic filters + open
- Beam shaper: Indexable, continuous rotation in both directions at different speeds
- Dimmer/Shutter: Full range dimming and variable strobe effect, electronic strobbing "ZAP"
- Motorized zoom
- Pan: 530°
- Tilt: 280°

## ● Rigging

- Mounting points: 4 pairs of ¼-turn locks
- 2x Omega bracket with ¼-turn quick locks
- Safety chain/rope attachment point

## ● Optional Accessories

- Module of front wide-angle lens D200
- Remote Control IR
- Top Hats



# ColorSpot 575E AT



The ColorSpot 575E AT is an electronic ballast version of the ColorSpot 575 AT, which sees an expansion of features like flicker-free operation, enhanced light output, extended lamp life, power-saving mode for economy and reduced weight. The ColorSpot 575E AT is equipped with high practical large LCD graphic display. It also includes two separate gobo wheels and 2 separate colour wheels with the "SLOT & LOCK" system, motorized multi-step zoom with three different apertures of 15, 18 and 22 degrees; motorized iris, prism, separate and variable frost effects, remote focus and many, many more features.

## ● Source

- Lamp: Compact high-pressure metal halide lamp
- Base: GX9.5
- Approved model: Philips MSR 575/2
- Control: Automatic and remote on/off
- Ballast: Electronic

## ● Optical System

- Dichroic glass reflector for maximising the light efficiency
- 15, 18 and 22 degree beam angles remotely adjustable

## ● Electrical Specification

- Wiring options: 100/120/208/230/240V, 50/60Hz
- Power consumption: 760VA at 230V/50Hz

## ● Mechanical Specification

- Height: 555 mm (21.9") - head in horizontal position
- Width: 470 mm (18.5")
- Depth: 446 mm (17.6")
- Weight: 26 kg (57.3 lbs)

## ● Thermal

- Maximum ambient temperature: 40°C (104°F)
- Maximum surface temperature: 80°C (176°F)

## ● Gobos

- Outside diameter - dichroic and glass gobos: 26.8 mm
- Image diameter - dichroic gobos: 22 mm
- Thickness - dichroic gobos: 1.1 mm (high temperature borofloat or better glass); glass gobos: max. thickness = 4 mm (high temperature borofloat or better glass)

## ● Control and Programming

- Protocol: USITT DMX-512, RDM support
- Control channels: 19, 21, 27 or 29
- DMX channels: 4 protocol modes
- Built-in demo sequences
- Display: blue/white LCD graphic
- Pan/Tilt resolution: 16-bit
- Colour wheel positioning: 8- or 16-bit
- Gobo wheel positioning: 8- or 16-bit
- Frost: 8- or 16-bit
- Iris: 8- or 16-bit
- Focus: 8- or 16-bit
- Dimmer: 8- or 16-bit
- Controllable speed of fans
- Movement control: Tracking and vector
- Built-in analyzer for easy fault finding
- 3-editable programs, each up to 99 steps
- Stand-alone operation
- Ethernet port: Art-Net protocol, ready for ACN
- Data in/out: Locking 3-pin XLR & 5-pin XLR

## ● Electromechanical Effects

- Motorized multi-step zoom with three different apertures (15°, 18°, 22°)
- Colour wheel 1: 9 dichroic filters + open
- Colour wheel 2: 8 replaceable "SLOT&LOCK" dichroic filters + open (including 3200K, correction filter and UV filter)
- Static gobo wheel: 9 replaceable "SLOT&LOCK" metal gobos + open
- Rotating gobo wheel: 7 rotating, indexable, replaceable, "SLOT&LOCK" dichroic glass gobos + open
- Prism: 3-facet prism rotating in both directions at different speeds
- Frost effect: Separate, variable
- Dimmer/Shutter: Full range dimming and variable strobo effect
- Iris: Motorized iris for different beam diameters
- Focus: Motorized focus
- Pan: 530°
- Tilt: 280°

## ● Rigging

- Mounting points: 4 pairs of ¼-turn locks
- 2x Omega bracket with ¼-turn quick locks

## ● Optional Accessories

- Remote Control IR



# ColorSpot 575 AT



The ColorSpot 575 AT includes all the effects imaginable - two separate gobo wheels with the "SLOT&LOCK" system, two separate colour wheels (one with the "SLOT&LOCK" system), motorized multi-step zoom with three different apertures of 15, 18 and 22 degrees, motorized iris, prism, separate and variable frost effect, remote focus and more. A new optical system and a new dichroic glass reflector increase the light output of the ColorSpot 575 AT. Completely new software enables very smooth rotations of gobos and prism, and 8- or 16-bit resolution for gobo indexing, prism indexing and dimmer. This product is the right solution for all types of installations from big clubs, large discotheques and venues to concerts and touring applications.

## ● Source

- Lamp: Compact high-pressure metal halide lamp
- Base: GX9.5
- Approved model: Philips MSR 575/2
- Control: Automatic and remote on/off
- Ballast: Magnetic

## ● Optical System

- Dichroic glass reflector for maximising the light efficiency
- 15, 18 and 22 degree beam angles remotely adjustable

## ● Electrical Specification

- Wiring options: EU model - 208/230/240V, 50/60Hz, US model - 100/120/208/230V, 50/60Hz
- Power consumption: 760VA at 230V/50Hz

## ● Mechanical Specification

- Height: 574 mm (22.6") - head in horizontal position
- Width: 470 mm (18.5")
- Depth: 446 mm (17.6")
- Weight: EU model - 32 kg (70.5 lbs), US model - 36 kg (79.3 lbs)

## ● Thermal

- Maximum ambient temperature: 40°C (104°F)
- Maximum surface temperature: 80°C (176°F)

## ● Gobos

- Outside diameter - dichroic and glass gobos: 26.8 mm
- Image diameter - dichroic gobos: 22 mm
- Thickness - dichroic gobos: 1.1 mm (high temperature borofloat or better glass); glass gobos: max. thickness = 4 mm (high temperature borofloat or better glass)

## ● Control and Programming

- Protocol: USITT DMX-512, RDM support
- Control channels: 19, 21, 27 or 29
- DMX channels: 4 protocol modes
- Built-in demo sequences
- 3-editable programs, each up to 99 steps
- Stand-alone operation
- Master/Slave operation
- Display: 4-digit LED display
- Pan/Tilt resolution: 16-bit
- Colour wheel positioning: 8- or 16-bit
- Gobo wheel positioning: 8- or 16-bit
- Frost: 8- or 16-bit
- Iris: 8- or 16-bit
- Focus: 8- or 16-bit
- Dimmer: 8- or 16-bit
- Controllable speed of fans
- Movement control: Tracking and vector
- Built-in analyzer for easy fault finding
- Data in/out: Locking 3-pin XLR & 5-pin XLR

## ● Electromechanical Effects

- Motorized multi-step zoom with three different apertures (15°, 18°, 22°)
- Colour wheel 1: 9 dichroic filters + open
- Colour wheel 2: 8 replaceable "SLOT&LOCK" dichroic filters + open (including 3200K correction filter and UV filter)
- Static gobo wheel: 9 replaceable "SLOT&LOCK" metal gobos + open
- Rotating gobo wheel: 7 rotating, indexable, replaceable "SLOT&LOCK" glass gobos + open
- Prism: 3-facet prism rotating in both directions at different speeds
- Frost effect: Separate, variable
- Dimmer/Shutter: Full range dimming and variable strobe effect, electronic strobbing
- Iris: Motorized iris for different beam diameters
- Focus: Motorized focus
- Pan: 530°
- Tilt: 280°

## ● Rigging

- Mounting points: 4 pairs of ¼-turn locks
- 2x Omega bracket with ¼-turn quick locks

## ● Optional Accessories

- Frost module



# ColorWash 575E AT



The ColorWash 575E AT is an electronic ballast version of the ColorWash 575 AT, which sees an expansion of features like flicker-free operation, enhanced light output, extended lamp life, power-saving mode for economy and reduced weight. The same large LCD display - first featured on the ColorSpot 1200 AT enhances the fixture's user-friendliness. An Ethernet connection is also available with the 575E AT version. ColorWash 575E AT is ideal for theatres, TV studios, medium sized stage applications and all applications requiring a "workhorse" 575 lamp. Offering full CMY, variable CTO, colour wheel with 5 replaceable colours + open, combined dimmer/shutter and rotatable beam shaper, indexable 360° with continuous rotation. The standard zoom angle has a range of 12° - 34°, extendable with an optional lens to make 24° - 60°.

- **Source**
  - Lamp: Compact high-pressure metal halide lamp
  - Base: GX9.5
  - Approved model: Philips MSR 575/2
  - Control: Automatic and remote on/off
  - Ballast: Electronic
- **Electrical Specification**
  - Wiring options: 100/120/208/230/240V, 50/60Hz
  - Power consumption: 720VA at 230V/50Hz
- **Mechanical Specification**
  - Height: 588 mm (23.1") - head in horizontal position
  - Width: 470 mm (18.5")
  - Depth: 446 mm (17.6")
  - Weight: 26 kg (57.3 lbs)

- **Thermal**
  - Maximum ambient temperature: 40°C (104°F)
  - Maximum surface temperature: 80°C (176°F)
- **Control and Programming**
  - Protocol: USITT DMX-512, RDM support
  - Control channels: 18, 20, 22 or 24
  - DMX channels: 4 protocol modes
  - Built-in demo sequences
  - Display: Blue/white LCD graphic
  - Pan/Tilt resolution: 16-bit
  - Colour wheel positioning: 8- or 16-bit
  - Rotating beam shaper indexing: 8- or 16-bit
  - Zoom: 8- or 16-bit
  - Dimmer: 8- or 16-bit
  - Movement control: Tracking or vector
  - Built-in analyzer for easy fault finding
  - Ethernet port: Art-Net protocol, ready for ACN
  - Data in/out: Locking 3-pin XLR & 5-pin XLR
  - Stand-alone operation
  - 3-editable programs, each up to 99 steps
- **Electromechanical Effects**
  - Cyan: 0 - 100%
  - Magenta: 0 - 100%
  - Yellow: 0 - 100%
  - CTO: 0 - 100%
  - Colour wheel: 5 replaceable "SLOT&LOCK" colours + open
  - Effect wheel: Beam shaper rotatable 360° and indexable, frost effect
  - Dimmer/Shutter: Full range dimming and variable strobe effect, electronic strobbing
  - Zoom: 12° - 34° standard, 24° - 60° or 87° with an optional lenses supplied on request
  - Pan: 530°
  - Tilt: 280°
- **Rigging**
  - Mounting points: 4 pairs of ¼-turn locks
  - 2x Omega bracket with ¼-turn quick locks
- **Optional Accessories**
  - Module of wide-angle lens D114 (24° - 60° angle range)
  - Module of front wide-angle lens D200 (87° angle)
  - Remote Control IR
  - Top Hats



# ColorWash 575E AT Zoom



The ColorWash 575E AT Zoom is an electronic ballast version of ColorWash 575 AT Zoom, which provides flicker-free operation. The fixture offers an extremely smooth linear motorized zoom that ranges from 8° to 50°. Thanks to the zoom this fixture is ideal for all types of professional installations.

## ● Source

- Lamp: Compact high-pressure metal halide lamp
- Base: GX9.5
- Approved model: Philips MSR 575/2
- Control: Automatic and remote on/off
- Ballast: Electronic

## ● Optical System

- High luminous-efficiency glass reflector
- Fresnel lenses of diameter 200 mm
- Internal diffusion lens of diameter 136 mm

## ● Electrical Specification

- Wiring options: 100/120/208/230/240V, 50/60Hz
- Power consumption: 720VA at 230V/50Hz

## ● Mechanical Specification

- Height: 588 mm (23.1") - head in horizontal position
- Width: 470 mm (18.5")
- Depth: 446 mm (17.6")
- Weight: 28 kg (61.8 lbs)

## ● Thermal

- Maximum ambient temperature (Ta): 40°C (104°F)
- Maximum surface temperature: 80°C (176°F)

## ● Control and Programming

- Protocol: USITT DMX-512, RDM support
- Control channels: 16, 18, 19, 21
- DMX channels: 4 protocol modes
- Stand-alone operation
- Flicker-free operation
- 3-editable programs, each up to 99 steps
- Built-in demo sequences
- Display: 4-digit LED display
- Pan/Tilt resolution: 16-bit
- Colour wheel positioning: 8- or 16-bit
- Zoom: 8- or 16-bit
- Dimmer: 8- or 16-bit
- Movement control: Tracking and vector
- Built-in analyzer for easy fault finding
- Data in/out: Locking 3-pin & 5-pin XLR

## ● Electromechanical Effects

- Cyan: 0 - 100%
- Magenta: 0 - 100%
- Yellow: 0 - 100%
- CTO: 0 - 100%
- Colour wheel: 5 replaceable "SLOT&LOCK" colours + open
- Dimmer/Shutter: Full range dimming and variable strobe effect, electronic strobbing
- Zoom: 8° - 50°
- Pan: 530°
- Tilt: 280°

## ● Rigging

- Mounting points: 4 pairs of ¼-turn locks
- 2x Omega bracket with ¼-turn quick locks

## ● Optional Accessories

- Module of Front wide-angle lens D200 (87° angle)
- Top Hats





# ColorWash 575 AT



The ColorWash 575 AT is ideal for theatres, TV studios, medium sized stage applications and all applications requiring a "workhorse" 575 lamp. Offering full CMY, variable CTO, colour-wheel with 5 replaceable colours + open, combined dimmer/shutter and rotatable beam shaper, indexable 360° with continuous rotation. The standard zoom angle has a range of 12-34°, extendable with an optional lens to make 24-60°.

## ● Source

- Lamp: Compact high-pressure metal halide lamp
- Base: GX9.5
- Approved model: Philips MSR 575/2
- Control: Automatic and remote on/off
- Ballast: Magnetic

## ● Electrical Specification

- Wiring options: EU model - 208/230/240V, 50/60Hz, US model - 100/120/208/230V, 50/60Hz
- Power consumption: 720VA at 230V/50Hz
- Internal diffusion lens of diameter 136 mm

## ● Optical System

- High luminous-efficiency glass reflector

## ● Mechanical Specification

- Height: 588 mm (23.1") - head in horizontal position
- Width: 470 mm (18.5")
- Depth: 446 mm (17.6")
- Weight: EU model - 30.5 kg (67.2 lbs), US model - 34.5 kg (76.1 lbs)

## ● Thermal

- Maximum ambient temperature: 40°C (104°F)
- Maximum surface temperature: 80°C (176°F)

## ● Control and Programming

- Protocol: USITT DMX-512, RDM support
- Control channels: 18, 20, 22 or 24
- DMX channels: 4 protocol modes
- Built-in demo sequences
- Display: 4-digit LED
- Pan/Tilt resolution: 16-bit
- Colour wheel positioning: 8- or 16-bit
- Rotating beam shaper indexing: 8- or 16-bit
- Zoom: 8- or 16-bit
- Dimmer: 8- or 16-bit
- Movement control: Tracking or vector
- Built-in analyzer for easy fault finding
- Data in/out: Locking 3-pin XLR & 5-pin XLR
- Master/Slave operation
- Stand-alone operation
- 3-editable programs, each up to 99 steps

## ● Electromechanical Effects

- Cyan: 0 - 100%
- Magenta: 0 - 100%
- Yellow: 0 - 100%
- CTO: 0 - 100%
- Colour wheel: 5 replaceable "SLOT&LOCK" colours + open
- Effect wheel: Beam shaper rotatable 360° and indexable, frost effect
- Dimmer/Shutter: Full range dimming and variable strobe effect
- Zoom: 12° - 34° standard, 24° - 60° or 87° with an optional lenses supplied on request
- Pan: 530°
- Tilt: 280°

## ● Rigging

- Mounting points: 4 pairs of ¼-turn locks
- 2x Omega bracket with ¼-turn quick locks

## ● Optional Accessories

- Module of wide-angle lens D114 (24° - 60° angle range)
- Module of front wide-angle lens D200 (87° angle)
- Top Hats



# ColorWash 575 AT

## Zoom



The ColorWash 575 AT Zoom includes all the features of the ColorWash 575 AT, and is enhanced with an extremely smooth linear motorized zoom that ranges from 8° to 50°. This is a great advantage, enabling the fixture a wider light output, making the ColorWash 575 AT Zoom suitable for all types of professional installations.

### ● Source

- Lamp: Compact high-pressure metal halide lamp
- Base: GX9.5
- Approved model: Philips MSR 575/2
- Control: Automatic and remote on/off
- Ballast: Magnetic

### ● Optical System

- High luminous-efficiency glass reflector
- Fresnel lenses of diameter 200 mm
- Internal diffusion lens of diameter 136 mm

### ● Electrical Specification

- Wiring options: EU model - 208/230/240V, 50/60Hz, US model - 100/120/208/230V, 50/60Hz
- Power consumption: 720VA at 230V/50Hz

### ● Mechanical Specification

- Height: 588 mm (23.1") - head in horizontal position
- Width: 470 mm (18.5")
- Depth: 446 mm (17.6")
- Weight: EU model - 31 kg (68.3 lbs), US model - 34.5 kg (76.1 lbs)

### ● Thermal

- Maximum ambient temperature (Ta): 40°C (104°F)
- Maximum surface temperature: 80°C (176°F)

### ● Control and Programming

- Protocol: USITT DMX-512, RDM support
- Control channels: 16, 18, 19, 21
- DMX channels: 4 protocol modes
- Master/Slave operation
- Stand-alone operation
- 3-editable programs, each up to 99 steps
- Built-in demo sequences
- Display: 4-digit LED display
- Pan/Tilt resolution: 16-bit
- Colour wheel positioning: 8- or 16-bit
- Zoom: 8- or 16-bit
- Dimmer: 8- or 16-bit
- Movement control: Tracking and vector
- Built-in analyzer for easy fault finding
- Data in/out: Locking 3-pin & 5-pin XLR

### ● Electromechanical Effects

- Cyan: 0 - 100%
- Magenta: 0 - 100%
- Yellow: 0 - 100%
- CTO: 0 - 100%
- Colour wheel: 5 replaceable "SLOT&LOCK" colours + open
- Dimmer/Shutter: Full range dimming and variable strobe effect
- Zoom: 8° - 50°
- Pan: 530°
- Tilt: 280°

### ● Rigging

- Mounting points: 4 pairs of ¼-turn locks
- 2x Omega bracket with ¼-turn quick locks

### ● Optional Accessories

- Module of front wide-angle lens D200 (87° angle)
- Remote Control IR
- Top Hats



# ColorSpot 250 AT



The ColorSpot 250 AT includes a new rotating gobo wheel with 7 replaceable "SLOT&LOCK" dichroic glass gobos + open, and a new colour wheel hosting 10 replaceable "SLOT&LOCK" colours + open. The 3-facet rotating prism is now also replaceable. Completely new software enables very smooth rotations of gobos and prism, and 8- or 16-bit resolution for gobo indexing, prism indexing and dimmer. The improved cooling system ensures better operating conditions for lamp and reduces noise at the same time. The ColorSpot 250 AT is aimed at the TV studios, small and middle sized clubs and discotheques, and various types of installations.

- **Source**
  - Lamp: Compact high-pressure metal halide lamp
  - Base: GY9.5
  - Approved model: Philips MSD 250/2
  - Control: Automatic and remote on/off
  - Ballast: Magnetic
- **Optical System**
  - Standard objective: 15°
  - Optional objectives: 12° and 18°
- **Electrical Specification**
  - Wiring options: EU model - 208/230/240V, 50/60Hz, US model - 100/120/208/230V, 50/60Hz
  - Power consumption: 410VA at 230V/50Hz
- **Mechanical Specification**
  - Height: 483 mm (19.0") - head in horizontal position
  - Width: 419 mm (16.5")
  - Depth: 438 mm (17.3")
  - Weight: EU model - 20.5 kg (45.2 lbs), US model - 23.5 kg (51.8 lbs)

- **Thermal**
  - Maximum ambient temperature (Ta): 40°C (104°F)
  - Maximum surface temperature: 80°C (176°F)
- **Gobos**
  - Outside diameter - dichroic and glass gobos: 26.8 mm
  - Image diameter - dichroic gobos: 22 mm
  - Thickness - dichroic gobos: 1.1 mm (high temperature borofloat or better glass)
  - Glass gobos: max. thickness = 4 mm (high temperature borofloat or better glass)
- **Control and Programming**
  - Protocol: USITT DMX-512, RDM support
  - Control channels: 14, 16, 18 or 20
  - DMX channels: 4 protocol modes
  - Built-in demo sequences
  - Display: 4-digit LED display
  - Pan/Tilt resolution: 16-bit
  - Colour wheel: 8- or 16-bit
  - Gobo indexing: 8- or 16-bit
  - Focus: 8- or 16-bit
  - Dimmer: 8- or 16-bit
  - Master/Slave operation
  - Stand-alone operation
  - 3-editable programs, each up to 99 steps
  - Movement control: Tracking and vector
  - Built-in analyzer for easy fault finding
  - Data in/out: Locking 3-pin XLR + 5-pin XLR
- **Electromechanical Effects**
  - Colour wheel: 10 replaceable "SLOT&LOCK" dichroic filters + open
  - Gobo wheel: 7 rotating, indexable, replaceable "SLOT&LOCK" glass gobos + open
  - Interchangeable high-speed rotating 3-facet prism, optional frost filter supplied with the fixture
  - Dimmer/Shutter: Full range dimming and variable strobe effect
  - Focus: Motorized focus
  - Pan: 530°
  - Tilt: 280°
- **Rigging**
  - Mounting points: 4 pairs of ¼-turn locks
  - 2x Omega bracket with ¼-turn quick locks
- **Optional Accessories**
  - Objective 12°
  - Lens-module 18°



# ColorWash 250 AT



A completely new optical system makes this fixture 50% brighter than its predecessor, the Wash 250 XT. New ultra smooth CMY colour mixing offers a fantastic spectrum of hues. A motorized zoom effect ranges from 8 - 32° and the extremely silent cooling system and movement make this fixture a superb choice for TV and theatre. The colour wheel offers 6 saturated colours + open, using Robe's renowned "SLOT&LOCK" system. Frost filter and a beam shaper are available on the effect wheel. As with all other Robe AT moving heads, 16-bit resolution is available for movement, colour wheel positioning and dimming.

## ● Source

- Lamp: Compact high-pressure metal halide lamp
- Base: GY9.5
- Approved model: Philips MSD 250/2
- Control: Automatic and remote on/off
- Ballast: Magnetic

## ● Optical System

- High luminous-efficiency parabolic reflector
- Front fresnel lens of diameter 158 mm

## ● Electrical Specification

- Wiring options: EU model - 208/230/240V, 50/60Hz, US model - 100/120/208/230V, 50/60Hz
- Power consumption: 405VA at 230V/50Hz

## ● Mechanical Specification

- Height: 502 mm (19.8")
- Width: 419 mm (16.5")
- Depth: 438 mm (17.2")
- Weight: EU model - 20.5 kg (45.2 lbs), US model - 23.5 kg (51.8 lbs)

## ● Thermal

- Maximum ambient temperature: 45°C (113°F)
- Maximum surface temperature: 70°C (158°F)

## ● Control and Programming

- Protocol: USITT DMX-512, RDM support
- Control channels: 16, 18 or 20
- DMX channels: 4 protocol modes
- Built-in demo sequences
- Display: 4-digit LED display
- Pan/Tilt resolution: 16-bit
- Colour wheel positioning: 8- or 16-bit
- Dimmer: 8- or 16-bit
- Master/Slave operation
- Stand-alone operation
- 3-editable programs, each up to 99 steps
- Movement control: Tracking and vector
- Built-in analyzer for easy fault finding
- Data in/out: Locking 3-pin XLR & 5-pin XLR

## ● Electromechanical Effects

- Cyan: 0 - 100%
- Magenta: 0 - 100%
- Yellow: 0 - 100%
- Colour wheel: 6 replaceable "SLOT&LOCK" dichroic filters + open
- Effect wheel: Beam Shaper rotated by 90°, Frost Filter
- Dimmer/Shutter: Full range dimming and variable strobe effect
- Zoom: Motorized zoom 8° - 32°
- Pan: 530°
- Tilt: 268°

## ● Rigging

- Mounting points: 4 pairs of ¼-turn locks
- 2x Omega brackets with ¼-turn quick locks



# ColorSpot 170 AT



The ColorSpot 170 AT is designed for multiple applications and is ideal for architectural lighting, bars, restaurants, shops, retail environments, product launches and events and for use as an image projector for advertising. The ColorSpot 170 AT offers many more features than its predecessor, including a new rotating gobo wheel, a new colour wheel, remote focus facility, "SLOT&LOCK" colour and gobo changing system, remote lamp on/off and very fast movement. It utilises a long-life lamp source. Onboard master/slave programming enables 300 scenes to be stored in the onboard memory – ideal for stand-alone operation and scenarios.

## ● Source

- Lamp: Compact discharge lamp
- Base: G12
- Approved model: Philips CDM-SA/T 150/942
- Ballast: Magnetic

## ● Optical System

- Objective: 19°

## ● Electrical Specification

- Wiring options: EU model - 208/230/240V, 50/60Hz, US model - 100/120/208/230/240V, 50/60Hz
- Power consumption: 300VA at 230V/50Hz

## ● Mechanical Specification

- Height: 416 mm (16.4") - head in horizontal position
- Width: 326 mm (12.8")
- Depth: 362 mm (14.3")
- Weight: EU model - 11 kg (24.2 lbs), US model - 13 kg (28.6 lbs)

## ● Thermal

- Maximum ambient temperature (Ta): 40°C (104°F)
- Maximum surface temperature: 80°C (176°F)

## ● Gobos

- Metal gobos - outside diameter: 26.9 mm, aluminium, thickness: 0.5 mm
- Dichroic gobos - outside diameter: 26.8 mm, thickness: 1.1 mm, high temperature borofloat or better glass
- Glass gobos - outside diameter: 26.8 mm, max. thickness: 4 mm, high temperature borofloat or better glass

## ● Control and Programming

- Protocol: USITT DMX-512, RDM support
- Max. control channels: 10, 12 or 16
- Built-in demo sequences
- Display: 4-digit LED display
- Pan/Tilt resolution: 8- or 16-bit
- Master/Slave operation
- Stand-alone operation
- 4 DMX control modes
- 3 freely-programmable programs, up to 99 steps each
- Movement control: Tracking and vector
- Built-in analyzer for easy fault finding
- Data in/out: Locking 3-pin XLR
- Built-in microphone for audio mode

## ● Electromechanical Effects

- Colour wheel: 10 dichroic filters + open, all colours are easily replaceable
- Rotating gobo wheel: 3 metal gobos, 3 glass and 1 dichroic gobo + open
- All gobos are replaceable
- Dimmer/Shutter: Full range dimming and variable strobe effect
- Pan: 530°
- Tilt: 280°
- Maximum Pan-movement 530° in 2.2s
- Maximum Tilt-movement 280° in 1.6s

## ● Rigging

- Via 2 Omega holders



# ClubSpot 500 CT



The ClubSpot 500 CT offers colour wheel with 9 dichroic filters; rotating gobo wheel with 6 rotating, indexable and replaceable gobos; 3-facet prism and 2 manual adjustable beam apertures 15° and 22°. This fixture is ideal for middle installation applications.

## ● Source

- Lamp: Compact high-pressure metal halide lamp
- Base: GX9.5
- Approved models: Philips MSR 575/2, Osram HSR 575/72
- Control: Automatic and remote on/off
- Ballast: Magnetic

## ● Optical System

- Manual zoom 15° or 22°

## ● Electrical Specification

- Wiring options: EU-model - 208/230/240V, 50/60Hz, US model - 100/120/208/230V, 50/60Hz
- Power consumption: 740VA at 230V/50Hz

## ● Mechanical Specification

- Height: 564 mm (22.2") - head in horizontal position
- Width: 467 mm (18.4")
- Depth: 491 mm (19.3")
- Weight: EU model - 32 kg (70.5 lbs), US model - 36 kg (79.4 lbs)

## ● Thermal

- Maximum ambient temperature (T<sub>a</sub>): 40°C (104°F)
- Maximum surface temperature: 80°C (176°F)

## ● Gobos

- Outside diameter of glass gobos: 26.8 mm
- Thickness of glass gobos: 1.1 mm (high temperature borofloat or better glass); max. thickness = 4 mm

## ● Control and Programming

- Protocol: USITT DMX-512
- Control channels: 11 or 13
- Built-in demo sequences
- Display: 4-digit LED display
- Pan/Tilt resolution: 8- or 16-bit
- Master/Slave operation
- Stand-alone operation
- Controllable speed of fans
- Movement control: Tracking and vector
- Built-in analyzer for easy fault finding
- Data in/out: Locking 3-pin XLR

## ● Electromechanical Effects

- Colour wheel 1: 9 dichroic filters + open
- Rotating gobo wheel: 6 rotating, indexable, replaceable gobos (1 effect - glass gobo, 3 black and white gobos, 1 multicolor and 1 dichroic gobo) + open
- Prism: 3-facet prism rotating in both directions at different speeds
- Dimmer/Shutter: Full range dimming and variable strobe effect
- Focus: Motorized focus
- Pan: 530°
- Tilt: 280°

## ● Rigging

- Mounting points: 4 pairs of ¼-turn locks
- 2x Omega brackets with ¼-turn quick locks



# ClubWash 500 CT



The ClubWash 500 CT features manual zoom 7°- 28°; CMY colour mixing system; full range dimming and variable strobo effect. The ClubWash 500 CT is aimed at middle sized clubs and discotheques and various other types of installations.

## ● Source

- Lamp: Compact high-pressure metal halide lamp
- Base: GX9.5
- Approved models: Philips MSR 575/2, Osram HSR 575/72
- Control: Automatic and remote on/off
- Ballast: Magnetic

## ● Optical System

- Manual Linear zoom between 7° and 28° beam angles
- Fresnel lens of diameter 200 mm

## ● Electrical Specification

- Wiring options: EU model - 208/230/240V, 50/60Hz, US model - 100/120/208/230V, 50/60Hz
- Power consumption: 680VA at 230V/50Hz

## ● Mechanical Specification

- Height: 565 mm (22.2") - head in horizontal position
- Width: 467 mm (18.4")
- Depth: 491 mm (19.3")
- Weight: EU model - 31 kg (68.3 lbs), US model - 35 kg (77.2 lbs)

## ● Thermal

- Maximum ambient temperature (Ta): 40°C (104°F)
- Maximum surface temperature: 80°C (176°F)

## ● Control and Programming

- Protocol: USITT DMX-512
- Control channels: 11 or 13
- Built-in demo sequences
- Display: 4-digit LED display
- Pan/Tilt resolution: 8- or 16-bit
- Master/Slave operation
- Stand-alone operation
- Controllable speed of fans
- Movement control: Tracking and vector
- Built-in analyzer for easy fault finding
- Data in/out: Locking 3-pin XLR

## ● Electromechanical Effects

- CMY colours mixing system
- Dimmer/Shutter: Full range dimming and variable strobo effect
- Manual Zoom
- Pan: 530°
- Tilt: 280°

## ● Rigging

- Mounting points: 4 pairs of ¼-turn locks
- Via 2 Omega holders



# ClubSpot 300 CT



The ClubSpot 300 CT enhances Robe's dynamic Club Series. It's complete with 250W discharge lamp; remotely controllable motorized focus; standard 15° beam apertures and optional 12° and 18° lens; colour wheel with 11 dichroic colours and 6 interchangeable/indexable rotating gobos plus open.

## ● Source

- Lamp: Compact high-pressure metal halide lamp
- Base: GY9.5
- Approved models: Osram HSD 250/80, Philips MSD 250/2, Sylvania BA 250/2 SE
- Control: Automatic and remote on/off
- Ballast: Magnetic

## ● Optical System

- Standard objective: 15°
- Optional objectives: 12° and 18°

## ● Electrical Specification

- Wiring options: EU-model - 208/230/240V, 50/60Hz, US model - 100/120/208/230/240V, 50/60Hz
- Power consumption: 500VA at 230V/50Hz

## ● Mechanical Specification

- Height: 478 mm (18.8") - head in horizontal position
- Width: 417 mm (16.4")
- Depth: 398 mm (15.7")
- Weight: EU model - 20.5 kg (42.2 lbs), US model - 24 kg (52.9 lbs)

## ● Thermal

- Maximum ambient temperature (Ta): 45°C (113°F)
- Maximum surface temperature: 80°C (176°F)

## ● Gobos

- Glass gobos, outside diameter: 26.8 mm; thickness: 1.1 mm; high temperature borofloat or better glass

## ● Control and Programming

- Protocol: USITT DMX-512
- Control channels: 14 or 16
- DMX channels: 2 protocol modes
- Built-in demo sequences
- Display: 4-digit LED display
- Pan/Tilt resolution: 8- or 16-bit
- Master/Slave operation
- Stand-alone operation
- 3-editable programs, each up to 99 steps
- Controllable speed of fans
- Movement control: Tracking and vector
- Built-in analyzer for easy fault finding
- Data in/out: Locking 3-pin XLR

## ● Electromechanical Effects

- Colour wheel: 11 colours + white, rainbow effects in both directions
- Gobo wheel: 6 rotating glass gobos (1 effect - glass gobo, 3 black and white gobos, 1 multicolor and 1 dichroic gobo) + open, all gobos indexable and replaceable
- Dimmer/Shutter: Full range dimming and variable strobe effect
- Focus: Motorized focus
- Prism: 3-facet prism rotating in both directions at different speeds
- Pan: 530°
- Tilt: 280°

## ● Rigging

- 2 pairs of ¼-turn locks; 2x Omega bracket with ¼-turn quick locks
- 1 pair of mounting holes for clamps with M10 thread

## ● Optional Accessories

- Objective 12°
- Lens-module 18°
- Mounting plate





# ClubWash 300 CT



The ClubWash 300 CT includes a 250W discharge lamp, high luminous efficiency parabolic reflector, CMY colour mixing, colour wheel with 6 dichroic filters plus open, smooth dimmer and silent fans for cooling. The fixture is perfect for small to medium installation applications.

## ● Source

- Lamp: Compact high-pressure metal halide lamp
- Base: GY9.5
- Approved models: Osram HSD 250/80, Philips MSD 250/2, Sylvania BA 250/2 SE
- Control: Automatic and remote on/off
- Ballast: Magnetic

## ● Optical System

- Fresnel lens of diameter 150 mm
- Manually adjustable beam angle from 8° to 22°

## ● Electrical Specification

- Wiring options: EU model - 208/230/240V, 50/60Hz, US model - 100/120/208/230/240V, 50/60Hz
- Power consumption: 500VA at 230V/50Hz

## ● Mechanical Specification

- Height: 520 mm (20.5") - head in horizontal position
- Width: 417 mm (16.4")
- Depth: 398 mm (15.7")
- Weight: EU model - 20.5 kg (42.2 lbs), US model - 24 kg (52.9 lbs)

## ● Thermal

- Maximum ambient temperature (Ta): 45°C (113°F)
- Maximum surface temperature: 80°C (176°F)

## ● Control and Programming

- Protocol: USITT DMX-512
- Control channels: 14 or 16
- Built-in demo sequences
- Display: 4-digit LED display
- Master/Slave operation
- Stand-alone operation
- 3-editable programs, each up to 99 steps
- Controllable speed of fans
- Movement control: Tracking and vector
- Built-in analyser for easy fault finding
- Data in/out: Locking 3-pin XLR

## ● Electromechanical Effects

- Colour wheel: 3 dichroic filters, 3200K and 5600K correction filters, UV filter + open
- CMY mixing system - Cyan: 0 - 100%, Magenta: 0 - 100%, Yellow: 0 - 100%
- Effect wheel: Beam shaper, frost filter
- Dimmer/Shutter: Full range dimming and variable strobe effect
- Pan: 530°
- Tilt: 280°

## ● Rigging

- 2 pairs of ¼-turn locks; 2x Omega bracket with ¼-turn locks
- 1 pair of mounting holes for clamps with M10 thread

## ● Optional Accessories

- Mounting plate



# ClubSpot 250 CT



The ClubSpot 250 CT offers a gobo wheel with 10 static gobos including 2 replaceable slots + open, continuous rotation and gobo shake; a colour wheel with 11 colours + white, rainbow effect in both directions; manual focus, combined dimmer/shutter + strobe effect (max. 10 flashes/sec.). The ClubSpot 250 CT is great value-for-money and ideal for small to medium sized venues and bars or restaurants also incorporating a dancefloor.

## ● Source

- Lamp: Compact high-pressure metal halide lamp
- Base: GY9.5
- Approved models: Osram HSD 250/80, Philips MSD 250/2, Sylvania BA 250/2 SE
- Control: Automatic and remote on/off
- Ballast: Magnetic

## ● Optical System

- Standard objective: 15°
- Optional objectives: 12° and 18°

## ● Electrical Specification

- Wiring options: EU model - 208/230/240V, 50/60Hz, US model - 100/120/208/230/240V, 50/60Hz
- Power consumption: 420VA at 230V/50Hz

## ● Mechanical Specification

- Height: 478 mm (18.8") - head in horizontal position
- Width: 417 mm (16.4")
- Depth: 398 mm (15.7")
- Weight: EU model - 20.5 kg (42.2 lbs), US model - 24 kg (52.9 lbs)

## ● Thermal

- Maximum ambient temperature (Ta): 45°C (113°F)
- Maximum surface temperature: 80°C (176°F)

## ● Gobos

- Gobo wheel: 10 static gobos including 2 replaceable slots + open, continuous rotation and gobo shake
- Metal gobos - outside diameter: 26.9 mm; image diameter: 22.5 mm; thickness: 0.15 mm, stainless steel
- Multicolor dichroic gobos - outside diameter: 26.8 mm; thickness: 1.1 mm (high temperature borofloat or better glass)

## ● Control and Programming

- Protocol: USITT DMX-512
- Control channels: 8 or 10
- DMX channels: 2 protocol modes
- Built-in demo sequences
- Display: 4-digit LED display
- Pan/Tilt resolution: 8- or 16-bit
- Master/Slave operation
- Stand-alone operation
- 3-editable programs, each up to 99 steps
- Controllable speed of fans
- Movement control: Tracking and vector
- Built-in analyzer for easy fault finding
- Data in/out: Locking 3-pin XLR

## ● Electromechanical Effects

- Colour wheel: 11 colours + white, rainbow effects in both directions
- Static gobo wheel: 8 metal gobos, 2 replaceable dichroic gobos + open
- Dimmer/Shutter: Full range dimming and variable strobe effect
- Focus: Manual focus
- Pan: 530°
- Tilt: 280°

## ● Rigging

- 2 pairs of ¼-turn locks; 2x Omega bracket with ¼-turn quick locks
- 1 pair of mounting holes for clamps with M10 thread

## ● Optional Accessories

- Objective 12°
- Lens-module 18°
- Mounting plate



# ClubWash 250 CT



The ClubWash 250 CT is very easy to control and quick to programme. Highly competitively priced and with an outstanding features-for-value ratio, the fixture is perfect for small to medium installation applications and mobile Djs. Features include a manual zoom; colour wheel with 11 colours + white; rainbow effect; smooth dimmer & separate shutter + strobe effect (max. 10 flashes/sec.).

## ● Source

- Lamp: Compact high-pressure metal halide lamp
- Base: GY9.5
- Approved models: Osram HSD 250/80, Philips MSD 250/2, Sylvania BA 250/2 SE
- Control: Automatic and remote on/off
- Ballast: Magnetic

## ● Optical System

- Fresnel lens of diameter 150 mm
- Manually adjustable beam angle from 8° to 22°

## ● Electrical Specification

- Wiring options: EU model - 208/230/240V, 50/60Hz, US model - 100/120/208/230/240V, 50/60Hz
- Power consumption: 410VA at 230V/50Hz

## ● Mechanical Specification

- Height: 520 mm (20.5") - head in horizontal position
- Width: 417 mm (16.4")
- Depth: 398 mm (15.7")
- Weight: EU model - 20.5 kg (42.2 lbs), US model - 24 kg (52.9 lbs)

## ● Thermal

- Maximum ambient temperature (Ta): 45°C (113°F)
- Maximum surface temperature: 80°C (176°F)

## ● Control and Programming

- Protocol: USITT DMX-512
- Control channels: 8 or 10
- Built-in demo sequences
- Display: 4-digit LED display
- Master/Slave operation
- Stand-alone operation
- 3-editable programs, each up to 99 steps
- Controllable speed of fans
- Movement control: Tracking and vector
- Built-in analyser for easy fault finding
- Data in/out: Locking 3-pin XLR

## ● Electromechanical Effects

- Colour wheel: 11 colours + white, rainbow effect in both directions
- Dimmer/Shutter: Full range dimming and variable strobe effect
- Pan: 530°
- Tilt: 280°

## ● Rigging

- 2 pairs of ¼-turn locks; 2x Omega bracket with ¼-turn locks
- 1 pair of mounting holes for clamps with M10 thread

## ● Optional Accessories

- Mounting plate



# ClubSpot 160 CT



The ClubSpot 160 CT presents an ultra compact effect luminaire equipped with colour wheel with 6 dichroic filters; rotating gobo wheel with 7 replaceable gobos; shutter; variable strobo effect and manual focus. This fixture is ideal for small clubs, bars, restaurants and discotheques applications.

## ● Source

- Lamp: Compact discharge lamp
- Base: G12
- Approved model: Philips CDM-SA/T 150/942
- Ballast: Magnetic

## ● Optical System

- Objective: 19°

## ● Electrical Specification

- Wiring options: EU model - 208/230/240V, 50/60Hz, US model - 100/120/208/230/240V, 50/60Hz
- Power consumption: 300VA at 230V/50Hz

## ● Mechanical Specification

- Height: 416 mm (16.4") - head in horizontal position
- Width: 326 mm (12.8")
- Depth: 362 mm (14.3")
- Weight: EU model - 10.5 kg (23.1 lbs), US model - 12.5 kg (27.5 lbs)

## ● Thermal

- Maximum ambient temperature (T<sub>a</sub>): 40°C (104°F)
- Maximum surface temperature: 80°C (176°F)

## ● Gobos

- Glass gobos - outside diameter: 26.8 mm, thickness: 1.1 mm, max. thickness: 4 mm, high temperature borofloat or better glass
- Metal gobos - outside diameter: 26.9 mm, thickness: 0.5 mm, aluminium

## ● Control and Programming

- Protocol: USITT DMX-512
- Control channels: 6, 7 or 9
- Built-in demo sequences
- Display: 4-digit LED display
- Pan/Tilt resolution: 8- or 16-bit
- Master/Slave operation
- Stand-alone operation
- 4 DMX protocol modes
- Movement control: Tracking and vector
- Built-in analyzer for easy fault finding
- Data in/out: Locking 3-pin XLR
- Built-in microphone for audio mode

## ● Electromechanical Effects

- Colour wheel: 11 dichroic filters + open
- Rotating gobo wheel: 7 gobos (1 effect - glass gobo, 1 multicolor and 1 dichroic glass gobo, 4 metal gobos) + open
- All gobos are replaceable
- Dimmer/Shutter: Full range dimming and variable strobe effect
- Pan: 530°
- Tilt: 280°
- Maximum Pan-movement 530° in 3s
- Maximum Tilt-movement 280° in 1.9s

## ● Rigging

- Via 2 Omega holders



# ClubSpot 150 CT



The ClubSpot 150 CT has the similar ultra compact effect luminaire as ClubSpot 160 CT, which includes colour wheel with 11 dichroic filters and static gobo wheel with 11 metal gobos; variable strobo effect; shutter and manual focus. The ClubSpot 150 CT achieves a high level of performance for clubs & bars and discotheques applications.

## ● Source

- Lamp: Compact discharge lamp
- Base: G12
- Approved model: Philips CDM-SA/T 150/942
- Ballast: Magnetic

## ● Optical System

- Objective: 19°

## ● Electrical Specification

- Wiring options: EU model - 208/230/240V, 50/60Hz, US model - 100/120/208/230/240V, 50/60Hz
- Power consumption: 300VA at 230V/50Hz

## ● Mechanical Specification

- Height: 416 mm (16.4") - head in horizontal position
- Width: 326 mm (12.8")
- Depth: 362 mm (14.3")
- Weight: EU model - 10.5 kg (23.1 lbs), US model - 12.5 kg (27.5 lbs)

## ● Thermal

- Maximum ambient temperature (T<sub>a</sub>): 40°C (104°F)
- Maximum surface temperature: 80°C (176°F)

## ● Gobos

- Metal gobos - outside diameter: 22.5 mm, aluminium, thickness: 0.5 mm

## ● Control and Programming

- Protocol: USITT DMX-512
- Control channels: 6 or 8
- Built-in demo sequences
- Display: 4-digit LED display
- Pan/Tilt resolution: 8- or 16-bit
- Master/Slave operation
- Stand-alone operation
- 4 DMX protocol modes
- Movement control: Tracking and vector
- Built-in analyzer for easy fault finding
- Data in/out: Locking 3-pin XLR
- Built-in microphone for audio mode

## ● Electromechanical Effects

- Colour wheel: 11 dichroic filters + open
- Static gobo wheel: 11 metal gobos + open
- Dimmer/Shutter: Full range dimming and variable strobe effect
- Pan: 530°
- Tilt: 280°
- Maximum Pan-movement 530° in 3s
- Maximum Tilt-movement 280° in 1.9s

## ● Rigging

- Via 2 Omega holders



Scan 1200 XT .....	60	●
Scan 575 XT .....	62	●
Scan 250 XT .....	64	●
ClubScan 250 CT .....	66	●
ClubRoller 250 CT .....	68	●
ClubScan 150 CT .....	70	●
ClubRoller 150 CT .....	72	●



# Scan 1200 XT



The Scan 1200 XT is ideal for all applications. This light and compact scanner features 2 colour wheels; static gobo wheel with 5 metal gobos and rotating gobo wheel with 4 rotating, indexable and replaceable gobos; effect wheel with 3 different prisms; motorized focus and iris; full range dimming and variable strobe effect. This, the most powerful scanner in Robe scans range has proved to be good for large professional installations.

## Source

- Lamp: Osram HMI 1200W/GS
- Base: SFC15.5
- Control: Automatic and remote on/off
- Ballast: Magnetic

## Optical System

- Multistep zoom lenses system (15°, 21°, 28°)

## Electrical Specification

- Wiring options: 208/230/240V, 50/60Hz
- Power consumption: 1650VA at 230V/50Hz

## Mechanical Specification

- Height: 411 mm (16.2") - bracket in horizontal position
- Width: 414 mm (16.3")
- Depth: 1067 mm (42.0")
- Weight: 45 kg (83.3 lbs)

## Thermal

- Maximum ambient temperature (Ta): 40°C (104°F)
- Maximum surface temperature: 80°C (176°F)

## Rotating Gobos

- Outside diameter - metal gobos: 53.3 mm
- Outside diameter - dichroic gobo: 53.1 mm and glass gobo: 49.8 mm
- Thickness - metal gobos: 0.15 mm (stainless steel)
- Dichroic gobos: 1.1 mm (high temperature borofloat or better glass)
- Glass gobos: max. thickness = 4 mm (high temperature borofloat or better glass)

## Control and Programming

- Protocol: USITT DMX-512
- Control channels: 14 or 16
- Built-in demo sequences
- Display: 4-digit LED display
- Pan/Tilt resolution: 8- or 16-bit
- Master/Slave operation
- Stand-alone operation
- 3-editable programs, each up to 99 steps
- Controllable speed of fans
- Built-in analyzer for easy fault finding
- Data in/out: Locking 3-pin XLR

## Electromechanical Effects

- Colour wheel 1: 8 dichroic filters + open
- Colour wheel 2: 5 dichroic filters, colour temperature filters 3200K, 5600K and UV filter + open
- Static gobo wheel: 5 metal gobos + open
- Rotating gobo wheel: 4 rotating, indexable, replaceable gobos + open
- Effect wheel: 3-facet prism, 5-facet prism, 5-linear facet prism rotating in both directions at different speeds
- Dimmer/Shutter: Full range dimming and variable strobe effect
- Focus: Motorized focus
- Iris: Motorized iris for different beam diameters

## Rigging

- Via mounting bracket



# Scan 575 XT



The Scan 575 XT is ideal for bigger clubs and spaces where high light output is vital, thanks to a 575 Watt lamp and specially engineered optics. Features include 2 combinable gobo wheels, one offering static gobos and one with rotating gobos; remote focus, iris, rotating prism, frost filter and one with rotating gobos; remote focus, iris, rotating prism, frost filter and both CTO and CTB correction filters.

- **Source**
  - Lamp: Osram HMI 575W/GS
  - Base: SFC10
  - Control: Automatic and remote on/off
  - Ballast: Magnetic
- **Optical System**
  - Standard objective: 15°
  - Optional objective: 12°
- **Electrical Specification**
  - Wiring options - EU model: 208/230/240V, 50/60Hz, US model: 100/120/208/230V, 50/60Hz
  - Power consumption: 850VA at 230V/50Hz
- **Mechanical Specification**
  - Height: 346 mm (13.6") - bracket in horizontal position
  - Width: 306 mm (12.1")
  - Depth: 759 mm (29.9")
  - Weight: EU model - 22 kg (48.5 lbs), US model - 25 kg (55 lbs)
- **Thermal**
  - Maximum ambient temperature (Ta): 45°C (113°F)
  - Maximum surface temperature: 80°C (176°F)

- **Gobos**
  - Outside diameter - metal gobos: 26.9 mm
  - Outside diameter - dichroic and glass gobos: 26.8 mm
  - Thickness - metal gobos: 0.15 mm (stainless steel)
  - Thickness - dichroic gobos: 1.1 mm (high temperature borofloat or better glass); glass gobos: max. thickness = 4 mm (high temperature borofloat or better glass)
- **Control and Programming**
  - Protocol: USITT DMX-512
  - Control channels: 14 or 16
  - Built-in demo sequences
  - Display: 4-digit LED display
  - Pan/Tilt resolution: 8- or 16-bit
  - Master/Slave operating
  - Stand-alone operation
  - 3-editable programs, each up to 99 steps
  - Controllable speed of fans
  - Built-in analyzer for easy fault finding
  - Data in/out: Locking 3-pin XLR
- **Electromechanical Effects**
  - Colour wheel: 11 dichroic filters + open
  - Static gobo wheel: 11 gobos + open
  - Rotating gobo wheel: 6 rotating, indexable, replaceable gobos (1 metal, 5 glass) + open
  - Prism: 3-facet prism rotating in both directions at different speeds
  - Dimmer/Shutter: Full range dimming and variable strobe effect
  - Focus: Motorized focus
  - Effect wheel: Frost filter, 3200K/5600K correction filters and UV effect filter
  - Iris: Opening/closing effects
- **Rigging**
  - Via mounting bracket
- **Optional Accessories**
  - Objective 12° SCN





# Scan 250 XT



The Scan 250 XT is ideal for all clubs, discotheque or pub applications where an element of colour and sparkle is required. Features include gobo wheel with 6 rotating, indexable, replaceable gobos + open; colour wheel with 11 dichroic filters + open; remote focus, rotating prism, frost effect and dimmer and shutter.

## ● Source

- Lamp: Compact high-pressure metal halide lamp
- Base: GY9.5
- Approved models: Osram HSD 250/80, Philips MSD 250/2, Sylvania BA 250/2 SE
- Control: Automatic and remote on/off
- Ballast: Magnetic

## ● Optical System

- Standard objective: 15°
- Optional objectives: 12° and 18°

## ● Electrical Specification

- Wiring options: EU model - 208/230/240V, 50/60Hz, US model - 100/120/208/230/240V, 50/60Hz
- Power consumption: 500VA at 230V/50Hz

## ● Mechanical Specification

- Height: 346 mm (13.6") - bracket in horizontal position
- Width: 306 mm (12.1")
- Depth: 629 mm (24.8")
- Weight: EU model - 16 kg (35.2 lbs), US model - 19 kg (41.9 lbs)

## ● Thermal

- Maximum ambient temperature (Ta): 45°C (113°F)
- Maximum surface temperature: 80°C (176°F)

## ● Gobos

- Outside diameter - metal gobos: 26.9 mm
- Outside diameter - dichroic and glass gobos: 26.8 mm
- Thickness - metal gobos: 0.15 mm (stainless steel)
- Thickness - dichroic gobos: 1.1 mm (high temperature borofloat or better glass); glass gobos: max. thickness = 4 mm (high temperature borofloat or better glass)

## ● Control and Programming

- Protocol: USITT DMX-512
- Control channels: 14 or 16
- Built-in demo sequences
- Display: 4-digit LED display
- Pan/Tilt resolution: 8- or 16-bit
- Master/Slave operation
- Stand-alone operation
- 3-editable programs, each up to 99 steps
- Controllable speed of fans
- Built-in analyzer for easy fault finding
- Data in/out: Locking 3-pin XLR

## ● Electromechanical Effects

- Colour wheel: 11 dichroic filters + open
- Gobo wheel: 6 rotating, indexable, replaceable gobos + open
- Prism: 3-facet prism rotating in both directions at different speeds
- Effects: Frost filter and 3200K/5600K correction filters
- Dimmer/Shutter: Full range dimming and variable strobe effect
- Focus: Motorized focus

## ● Rigging

- Via mounting bracket

## ● Optional Accessories

- Objective 12° SCN
- Lens-module 18°



# ClubScan 250 CT



The ClubScan 250 CT comes with new electronics and software. This enables the master/slave and stand-alone operations. The option of "auto-" or "music-trigger" is also available for easy control. There's a gobo wheel with 9 new unique gobos; a colour wheel with 11 dichroic colours and UV effect filter and 3 multi-colour filters + open; a shutter with a strobe effect.

## Source

- Lamp: Compact high-pressure metal halide lamp
- Base: GY9.5
- Approved models: Osram HSD 250/80, Philips MSD 250/2, Sylvania BA 250/2 SE
- Ballast: Magnetic

## Optical System

- 19° objective, manual focus

## Electrical Specification

- Wiring options: EU model - 208/230/240V AC, 50/60Hz, US model - 100/120/208/230/240V AC, 50/60Hz
- Power consumption: 300VA at 230V/50Hz

## Mechanical Specification

- Height: 310 mm (12.2") - bracket in horizontal position
- Width: 238 mm (9.4")
- Depth: 493 mm (19.4")
- Weight: EU model - 13 kg (28.7 lbs), US model - 16 kg (35.3 lbs)

## Thermal

- Maximum ambient temperature: 45°C (113°F)
- Maximum surface temperature: 85°C (185°F)

## Gobos

- 5 metal gobos, 4 dichroic gobos + open
- Metal gobos - outside diameter: 16 mm, thickness: 0.5 mm, aluminium, image diameter: 13 mm
- Multicolor dichroic gobos - outside diameter: 15.8 mm, thickness: 1.1 mm, high temperature borofloat or better glass

## Control and Programming

- Protocol: USITT DMX-512
- Control channels: 6
- Built-in demo sequences
- Display: 3-digit LED
- Pan/Tilt resolution: 8-bit
- Data in/out: Locking 3-pin XLR
- Master/Slave operation
- 1-editable program up to 30 steps
- Time trigger
- Audio trigger

## Electromechanical Effects

- Colour wheel: 11 dichroic filters and UV effect filter and 3 multi-colour filters + open
- Gobo wheel: 9 rotating replaceable gobos + open; possible shaking gobos and pulse effects
- Shutter: Full range dimming and variable strobe effect
- Max. pan movement range: 144° or 187°
- Max. tilt movement range: 58°

## Rigging

- Via mounting bracket or mounting plate CT

## Optional Accessories

- Mounting plate CT



# ClubRoller 250 CT



The ClubRoller 250 CT utilises the same housing and functions as the ClubScan 250 CT with the addition of a mirror barrel. As with the ClubScan, the unit comes with new electronics and software. This enables the master/slave and stand-alone operations. The option of "auto-" or "music-trigger" is also available for easy control. There's a gobo wheel with 9 new unique gobos; a colour wheel with 11 dichroic colours and UV effect filter and 3 multi-colour filters + open; a shutter with a strobe effect.

## Source

- Lamp: Compact high-pressure metal halide lamp
- Base: GY9.5
- Approved models: Osram HSD 250/80, Philips MSD 250/2, Sylvania BA 250/2 SE
- Ballast: Magnetic

## Optical System

- 19° objective, manual focus

## Electrical Specification

- Wiring options: EU model - 208/230/240V AC, 50/60Hz, US model - 100/120/208/230/240V AC, 50/60Hz
- Power consumption: 300VA

## Mechanical Specification

- Height: 310 mm (12.2") - bracket in horizontal position
- Width: 238 mm (9.4")
- Depth: 493 mm (19.4")
- Weight: EU model - 13 kg (28.7 lbs), US model - 16 kg (35.3 lbs)

## Thermal

- Maximum ambient temperature: 45°C (113°F)
- Maximum surface temperature: 80°C (176°F)

## Gobos

- 5 metal gobos, 4 dichroic gobos + open
- Metal gobos - outside diameter: 16 mm, thickness: 0.5 mm, aluminium, image diameter: 13 mm
- Multicolor dichroic gobos - outside diameter: 15.8 mm, thickness: 1.1 mm, high temperature borofloat or better glass

## Control and Programming

- Protocol: USITT DMX-512
- Control channels: 6
- Built-in demo sequences
- Display: 3-digit LED
- Data in/out: Locking 3-pin XLR
- Master/Slave and Stand-alone operation
- 1-editable program up to 30 steps
- Time trigger, audio trigger

## Electromechanical Effects

- Colour wheel: 11 dichroic filters and UV effect filter and 3 multi-colour filters + open
- Gobo wheel: 9 rotating replaceable gobos + open; possible shaking gobos and pulse effects
- Shutter: Full range dimming and variable strobe effect

## Rigging

- Via mounting bracket or mounting plate CT

## Optional Accessories

- Mounting plate CT



# ClubScan 150 CT



Based on the successful ROBE DJ Scan 150 XT, the fixture has new electronics and software, extending the ClubScan 150 CT with the master/slave and stand-alone operations. The option of "auto-" or "music-trigger" for easy control is also available; the gobo wheel features 13 unique new gobos; a colour wheel with 11 dichroic filters and UV effect filter and 3 multi-colour filters + open and a shutter with a strobe effect.

## ● Source

- Lamp: OSRAM HSD 150/70
- Base: G12
- Ballast: Magnetic

## ● Optical System

- 19° objective, manual focus

## ● Electrical Specification

- Wiring options: EU model - 208/230/240V AC, 50/60Hz, US model - 100/120/208/230/240V AC, 50/60Hz
- Power consumption: 220VA at 230V/50Hz

## ● Mechanical Specification

- Height: 310 mm (12.2") - bracket in horizontal position
- Width: 238 mm (9.4")
- Depth: 493 mm (19.4")
- Weight: EU model - 11 kg (24.3 lbs), US model - 14 kg (33.1 lbs)

## ● Thermal

- Maximum ambient temperature: 45°C (113°F)
- Maximum surface temperature: 75°C (167°F)

## ● Control and Programming

- Protocol: USITT DMX-512
- Control channels: 6
- Built-in demo sequences
- Display: 3-digit LED display
- Pan/Tilt resolution: 8-bit
- Data in/out: Locking 3-pin XLR
- 1-editable program up to 30 steps
- Master/Slave and Stand-alone operation
- Time trigger, audio trigger

## ● Electromechanical Effects

- Colour wheel: 11 dichroic filters and UV effect filter and 3 multi-colour filters + open
- Static gobo wheel: 13 static gobos + open; possible shaking gobos and pulse effects
- Shutter, variable strobe effect
- Max. pan movement range: 144° or 187°
- Max. tilt movement range: 58°

## ● Rigging

- Via mounting bracket or mounting plate CT

## ● Optional Accessories

- Mounting plate CT



# ClubRoller 150 CT



The ClubRoller 150 CT comes with a barrel mirror to complete ROBE's range of Club&Bar Scanners. The fixture has new electronics and software, extending the ClubRoller 150 CT with the master/slave and stand-alone operations. The option of "auto-" or "music-trigger" for easy control is also available; the gobo wheel features 13 unique new gobos; a colour wheel with 11 dichroic filters and UV effect filter and 3 multi-colour filters + open and a shutter with a strobe effect.

## ● Source

- Lamp: OSRAM HSD 150/70
- Base: G12
- Ballast: Magnetic

## ● Optical System

- 19° objective, manual focus

## ● Electrical Specification

- Wiring options: EU model - 208/230/240V AC, 50/60Hz, US model - 100/120/208/230/240V AC, 50/60Hz
- Power consumption: 220VA

## ● Mechanical Specification

- Height: 310 mm (12.2") - bracket in horizontal position
- Width: 238 mm (9.4")
- Depth: 493 mm (19.4")
- Weight: EU model - 11 kg (24.3 lbs), US model - 14 kg (33.1 lbs)

## ● Thermal

- Maximum ambient temperature: 45°C (113°F)
- Maximum surface temperature: 75°C (167°F)

## ● Control and Programming

- Protocol: USITT DMX-512
- Control channels: 6
- Built-in demo sequences
- Display: 3-digit LED display
- Data in/out: Locking 3-pin XLR
- 1-editable program up to 30 steps
- Master/Slave and Stand-alone operation
- Time trigger, audio trigger

## ● Electromechanical Effects

- Colour wheel: 11 dichroic filters and UV effect filter and 3 multi-colour filters + open
- Static gobo wheel: 13 static gobos + open; possible shaking gobos and pulse effects
- Shutter, variable strobe effect

## ● Rigging

- Via mounting bracket or mounting plate CT

## ● Optional Accessories

- Mounting plate CT



## COLOUR CHANGERS

ColorMix 575 AT .....	76	●
ColorMix 250 AT .....	78	●
ColorMix 240 AT .....	80	●
Beam 250 XT .....	82	●



# ColorMix 575 AT



The versatile ColorMix 575 AT fixture is ideal for theatres, clubs, live performance and stage work, TV studios and interior architectural applications – anywhere where powerful, evenly-spread colour mixing is needed. It offers full CMY colour changing facilities, remote zoom of 10 - 26 degrees, continuously rotating colour wheel with 4 colours, 3200K, 5600K, UV plus open. The ColorMix 575 AT also has a beam shaper, adjustable between 0 and 180 degrees and frost filter.

## ● Source

- Lamp: Compact high-pressure metal halide lamp
- Base: GY9.5
- Approved model: Philips MSR 575/2
- Control: Automatic and remote on/off
- Ballast: Magnetic

## ● Optical System

- Motorized multi-step zoom between 10° and 26° beam angles
- Fresnel lens of diameter 200 mm
- 85° beam angle with the optional front wide-angle lens

## ● Electrical Specification

- Wiring options: EU model - 208/230/240V, 50/60Hz, US model - 100/120/208/230V, 50/60Hz
- Power consumption: 730VA at 230V/50Hz

## ● Mechanical Specification

- Height: 450 mm (17.7") - bracket in horizontal position
- Width: 480 mm (18.9")
- Depth: 485 mm (19.1")
- Weight: EU model - 22 kg (48.5 lbs), US model - 26 kg (57.3 lbs)

## ● Thermal

- Maximum ambient temperature: 40°C (104°F)
- Maximum surface temperature: 75°C (167°F)

## ● Control and Programming

- Protocol: USITT DMX-512, RDM support
- Control channels: 11, 14
- Built-in demo sequences
- Display: 4-digit LED display
- Built-in microphone for music trigger
- Master/Slave operation
- Stand-alone operation
- 3 freely-programmable programs, up to 99 steps each
- Built-in analyzer for easy fault finding
- Data in/out: Locking 3-pin XLR

## ● Electromechanical Effects

- CMY mixing system: Cyan 0 - 100%, Magenta 0 - 100%, Yellow 0 - 100%
- Colour wheel: 4 dichroic filters, 3200K and 5600K CTF, UV filter + open
- Effect wheel: Beam shaper, frost filter
- Dimmer/Shutter: Full range dimming and variable strobe effect

## ● Rigging

- Stands directly on the floor with removable stand
- Mounts horizontally or vertically with mounting bracket
- Vertical head adjusting range: 135°

## ● Optional Accessories

- Barn-doors
- Front wide-angle lens



# ColorMix 250 AT



This fixture is a static colour changer with a fresnel lens. The ColorMix 250 AT is aimed at theatres, TV studios, stage lighting and interior and exterior architectural lighting. Features include CMY colour mixing plus an additional colour wheel, six dichroic colours and open, beam shaper, frost filter, dimmer shutter and an included barn door fitting for the front. The fixture can be floor standing or wall/ceiling mounted and offers the same functionality needed as the Wash 250 XT moving head.

## ● Source

- Lamp: Compact high-pressure metal halide lamp
- Base: GY9.5
- Approved model: Philips MSD 250/2
- Control: Automatic and remote on/off
- Ballast: Magnetic

## ● Optical System

- Fresnel lens of diameter 150 mm
- Manually adjustable beam angle from 8° to 22°

## ● Electrical Specification

- Wiring options: EU model - 208/230/240V, 50/60Hz, US model - 100/120/208/230/240V, 50/60Hz
- Power consumption: 390VA at 230V/50Hz

## ● Mechanical Specification

- Height: 353 mm (13.9") - bracket in horizontal position
- Width: 409 mm (16.1")
- Depth: 377 mm (14.8")
- Weight: EU model - 17.5 kg (38.6 lbs), US model - 19.5 kg (43 lbs)

## ● Thermal

- Maximum ambient temperature (Ta): 40°C (104°F)
- Maximum surface temperature: 75°C (167°F)

## ● Control and Programming

- Protocol: USITT DMX-512, RDM support
- Control channels: 11 or 10
- Built-in demo sequences
- Display: 4-digit LED display
- Built-in microphone for music trigger
- Master/Slave operation
- Stand-alone operation
- 3 freely-programmable programs, up to 99 steps each
- Built-in analyzer for easy fault finding
- Data in/out: Locking 3-pin XLR

## ● Electromechanical Effects

- Colour wheel: 3 dichroic filters, 3200K and 5600K correction filters, UV filter + open
- CMY mixing system: Cyan: 0 - 100%, Magenta: 0 - 100%, Yellow: 0 - 100%
- Effect wheel: Beam shaper, frost filter
- Dimmer/Shutter: Full range dimming and variable strobe effect

## ● Rigging

- Stands directly on the floor with removable stand
- Mounts horizontally or vertically with mounting bracket
- Vertical head adjusting range: 135°





# ColorMix 240 AT



The ColorMix 240 AT is a compact version of ColorMix 250 AT. It features all the functions that lighting designers and architects find most useful such as full ultra-smooth CMY colour mixing, fast shutter, smooth dimmer, remote lamp on/off functionality and internal stand-alone programming facilities. ColorMix 240 AT is an ideal substitution of the conventional PAR reflectors with colour scrollers.

## ● Source

- Lamp: Compact high-pressure metal halide lamp
- Base: GY9.5
- Approved model: Philips MSD 250/2
- Control: Automatic and remote on/off
- Ballast: Magnetic

## ● Optical System

- Fresnel lens of diameter 150 mm
- Manually adjustable beam angle from 8° to 22°

## ● Electrical Specification

- Wiring options: EU model - 208/230/240V, 50/60Hz, US model - 100/120/208/230/240V, 50/60Hz
- Power consumption: 390VA at 230V/50Hz

## ● Mechanical Specification

- Height: 353 mm (13.9") - bracket in horizontal position
- Width: 409 mm (16.1")
- Depth: 377 mm (14.8")
- Weight: EU model - 13.5 kg (29.7 lbs), US model - 15 kg (33 lbs)

## ● Thermal

- Maximum ambient temperature (Ta): 40°C (104°F)
- Maximum surface temperature: 75°C (167°F)

## ● Control and Programming

- Protocol: USITT DMX-512, RDM support
- Control channels: 11 or 8
- Built-in demo sequences
- Display: 4-digit LED display
- Built-in microphone for music trigger
- Master/Slave operation
- Stand-alone operation
- 3 freely-programmable programs, up to 99 steps each
- Built-in analyzer for easy fault finding
- Data in/out: Locking 3-pin XLR

## ● Electromechanical Effects

- CMY mixing system: Cyan: 0 - 100%, Magenta: 0 - 100%, Yellow: 0 - 100%
- Dimmer/Shutter: Full range dimming and variable strobe effect

## ● Rigging

- Stands directly on the floor with removable stand
- Mounts horizontally or vertically with mounting bracket
- Vertical head adjusting range: 135°

## ● Optional Accessories

- Removable stand
- Barn-doors



# Beam 250 XT



The Beam 250 XT is ideal for livening up any light coloured wall. The rotating colour wheel features 11 dichroic filters and the rotating effect wheel features 3 dichroic filters, 2 gobos and 3 beam reducers; manual zoom at range 11° - 20°.

## ● Source

- Lamp: Compact high-pressure metal halide lamp
- Base: GY9.5
- Approved model: Philips MSD 250/2
- Control: Automatic and remote on/off
- Ballast: Magnetic

## ● Optical System

- Manual zoom 11° - 20° and focus

## ● Electrical Specification

- Wiring options: 208/230/240V, 50/60Hz
- Power consumption: 400VA at 230V/50Hz

## ● Mechanical Specification

- Height: 330 mm (13.0") - bracket in horizontal position
- Width: 287 mm (11.3")
- Depth: 335 mm (13.2")
- Weight: 10.5 kg (23.1 lbs)

## ● Thermal

- Maximum ambient temperature: 45°C (113°F)
- Maximum surface temperature: 80°C (176°F)

## ● Control and Programming

- Protocol: USITT DMX-512
- Control channels: 4
- Built-in demo sequences
- Display: 4-digit LED display
- Controllable speed of fan
- Built-in analyzer for easy fault finding
- Data in/out: Locking 3-pin XLR

## ● Electromechanical Effects

- Colour wheel: 11 dichroic filters + open
- Effect wheel: Colour temperature filters 3200K and 5600K, UV filter, 3 dichroic filters, 2 static gobos and 3 beam reducers
- Frost light filter
- Dimmer/Shutter: Full range dimming and variable strobe effect

## ● Rigging

- Via mounting bracket



Dominator 1200 XT .....	86	●
FUSION .....	88	●
FUNKY .....	90	●
HIP-HOP .....	92	●
EUPHORIA .....	94	●
FLARE .....	96	●



# Dominator 1200 XT



The Dominator's center-piece is a 6-fold multi-scanner featuring 6 arms with moving mirrors and barrel mirrors to create fantastic lighting effects. The rotation-speed of the barrel mirrors is fully controllable, and the Dominator 1200 XT also has a stunning 3-facet prism effect, 6 different gobos and 3 different dichroic color filters. The Dominator 1200 XT is exclusively supplied with a DMX controller, complete with a series of pre-programmed sequences.

- **Source**
  - Lamp: HMI 1200/GS discharge lamp
- **Optical System**
  - 6x Double Condenser System
  - 6x 3-facet rotating prism
- **Electrical Specification**
  - Wiring options: EU version - 230V, 50/60Hz, US version - 208V, 60Hz
  - Power consumption: 1500W
- **Mechanical Specification**
  - Length: 1005 mm (39.0")
  - Height: 475 mm (18.7")
  - Depth: 950 mm (37.4")
  - Weight: 48 kg (106 lbs)
- **Gobos**
  - Metal gobos – outside diameter = 33 mm
  - Image diameter = 29 mm, thickness = 0,2 mm

- **Control and Programming**
  - Protocol: USITT DMX-512
  - Control channels: 12
  - Data in/out: Locking 3-pin XLR
- **Electromechanical Effects**
  - 6 mirrorheads with PAN & TILT
  - 6 mirrorhead cylinders rotating in both directions
  - Effect carousel 1: multicolour gobo, 6 different static gobos/colours
  - Effect carousel 2: 3 different dichroic colour filters (magenta, cyan, yellow), rotating 3-facet prism
  - Shutter: Black-out and dimming
- **Rigging**
  - Mounting bracket



# FUSION



This effect projector is fully DMX controllable; projects tightly focussed flower effects and other graphic effects; offers original gobo designs; includes a parabolic mirror reflector that rotates in both directions; a combined gobo/colour wheel with 14 positions plus open; comes with a powerful 250W halogen lamp (1000hrs life); a strobe effect and 0-100% digital dimming; "auto-trigger" or "music-trigger" mode for full flexibility.

## ● Source

- Lamp: Halogen lamp
- Base: GX5.3
- Approved model: Philips ELC/24V/250W, 1000 hrs life
- Control: Automatic and remote on/off

## ● Optical System

- Manual focus
- Parabolic mirror reflector

## ● Electrical Specification

- Wiring options: 100/120/208/230/240V, 50/60Hz
- Power consumption: 250VA at 230V/50Hz

## ● Mechanical Specification

- Height: 331 mm (13.0") - bracket in horizontal position
- Width: 326 mm (12.8")
- Depth: 285 mm (11.2")
- Weight: 7.5 kg (16.5 lbs)

## ● Thermal

- Maximum ambient temperature (Ta): 40°C (104°F)
- Maximum surface temperature: 75°C (167°F)

## ● Control and Programming

- Protocol: USITT DMX-512
- Control channels: 3
- Display: 3-digit LED display
- Built-in demo sequences
- Master/Slave operation
- Stand-alone operation
- 1-editable program up to 30 steps
- Built-in analyzer for easy fault finding
- Data in/out: Locking 3-pin XLR
- Auto- and music-trigger

## ● Electromechanical Effects

- Gobo wheel: 14 static gobos + open
- Strobe effect with variable speed (max. 4 flashes/sec.)
- Rotating parabolic mirror reflector

## ● Rigging

- Mounting bracket



# FUNKY



The FUNKY comes with a parabolic multi-colour mirror reflector and an effect-wheel creating a multi-colour flower effects; both reflector and effect-wheel have variable speed rotation in both directions; a strobe effect and 0-100% digital dimming; a powerful 250W halogen lamp (1000hrs life) and the additional control option of "auto-trigger" or "music-trigger"; fully DMX controllable.

## ● Source

- Lamp: Halogen lamp
- Base: GX5.3
- Approved model: Philips ELC/24V/250W, 1000 hrs life
- Control: Automatic and remote on/off

## ● Optical System

- Manual focus
- Parabolic mirror reflector

## ● Electrical Specification

- Wiring options: 100/120/208/230/240V, 50/60Hz
- Power consumption: 250VA at 230V/50Hz

## ● Mechanical Specification

- Height: 331 mm (13.0") - bracket in horizontal position
- Width: 326 mm (12.8")
- Depth: 285 mm (11.2")
- Weight: 7.5 kg (16.5 lbs)

## ● Thermal

- Maximum ambient temperature (Ta): 40°C (104°F)
- Maximum surface temperature: 75°C (167°F)

## ● Control and Programming

- Protocol: USITT DMX-512
- Control channels: 3
- Display: 3-digit LED display
- Built-in demo sequences
- Master/Slave operation
- Stand-alone operation
- 1-editable program up to 30 steps
- Built-in analyzer for easy fault finding
- Data in/out: Locking 3-pin XLR
- Auto- and music-trigger

## ● Electromechanical Effects

- Effect/gobo wheel: 7 static gobos and 3 beam reducers + open
- Strobe effect with variable speed (max. 4 flashes/sec.)
- Rotating parabolic multi-colour mirror reflector

## ● Rigging

- Mounting bracket



# HIP-HOP



The HIP-HOP comes with additional front 3-coloured triangular prism module for even more stunning effects; fully DMX controllable!; projects tightly focused flower effects and other graphic effects; offers original gobo designs; includes a parabolic mirror reflector that rotates in both directions; a combined gobo/colour wheel with 14 positions plus open; comes with a powerful 250W halogen lamp (1000hrs life); a strobe effect and 0-100% digital dimming; „auto-trigger“ or „music-trigger“ mode for full flexibility.

## ● Source

- Lamp: halogen lamp
- Base: GX5.3
- Approved model: Philips ELC/24V/250W, 1000 hrs life
- Control: Automatic and remote on/off

## ● Optical System

- Manual focus
- Parabolic mirror reflector
- Rotating triangular prism

## ● Electrical Specification

- Wiring options: 100/120/208/230/240V, 50/60Hz
- Power consumption: 250VA at 230V/50Hz

## ● Mechanical Specification

- Height: 331 mm (13.0") - bracket in horizontal position
- Width: 326 mm (12.8")
- Depth: 345 mm (13.6")
- Weight: 8.6 kg (19 lbs)

## ● Thermal

- Maximum ambient temperature (Ta): 40°C (104°F)
- Maximum surface temperature: 75°C (167°F)

## ● Control and Programming

- Protocol: USITT DMX-512
- Control channels: 4
- Display: 3-digit LED display
- Built-in demo sequences
- Master/Slave operation
- Stand-alone operating
- 1-editable program up to 30 steps
- Built-in analyzer for easy fault finding
- Data in/out: Locking 3-pin XLR
- Auto- and music-trigger

## ● Electromechanical Effects

- Gobo wheel: 14 static gobos + open
- Strobe effect with variable speed (max. 4 flashes/sec.)
- Rotating parabolic mirror reflector
- 3-coloured triangular prism module: Red, azure, white

## ● Rigging

- Mounting bracket



# Euphoria



- **Control and Programming**
  - Protocol: USITT DMX-512
  - Control channels: 3
  - Display: 3-digit LED display
  - Built-in demo sequences
  - Master/Slave operation
  - Stand-alone operating
  - 1-editable program up to 30 steps
  - Built-in analyzer for easy fault finding
  - Data in/out: Locking 3-pin XLR
  - Auto- and music-trigger
- **Electromechanical Effects**
  - Gobo wheel: 9 static gobos, gobo shake effect
  - Strobe effect with variable speed (max. 4 flashes/sec.)
  - Rotating triangular mirror
- **Rigging**
  - Mounting bracket

The Euphoria is a new effects projector in Robe's C&B series. It includes a rotating mirror prism for special visual effects, 9 gobo images with continual positioning, strobe effects with variable speed and a time and audio trigger. Euphoria was designed for club, bar and medium-sized event installations.

- **Source**
  - Lamp: halogen lamp
  - Base: GX5.3
  - Approved model: Philips ELC/24V/250W, 1000 hrs life
  - Control: Automatic and remote on/off
- **Optical System**
  - Manual focus
  - Rotating triangular mirror
  - Static triangular mirror
- **Electrical Specification**
  - Wiring options: 100/120/208/230/240V, 50/60Hz
  - Power consumption: 250VA at 230V/50Hz
- **Mechanical Specification**
  - Height: 331 mm (13.0") - bracket in horizontal position
  - Width: 326 mm (12.8")
  - Depth: 285 mm (11.2")
  - Weight: 7.5 kg (16.5 lbs)
- **Thermal**
  - Maximum ambient temperature (Ta): 40°C (104°F)
  - Maximum surface temperature: 75°C (167°F)





# FLARE



The FLARE is fully DMX controllable spotlight projector. It comes to the market with 19° beam angle, colour wheel with 15 dichroic filters, powerful 250W halogen lamp, a strobe effect and additional control option of „auto-trigger“ or „music-trigger“.

## ● Source

- Lamp: 250 W halogen lamp
- Base: GX5.3
- Approved model: Philips ELC/24V/250W, 1000 hrs life
- Control: Automatic and remote on/off

## ● Optical System

- Beam angle: 19°

## ● Electrical Specification

- Wiring options: 100/120/208/230/240V, 50/60Hz
- Power consumption: 250 VA at 230V/50Hz

## ● Mechanical Specification

- Height: 331 mm (13.0") (bracket in horizontal position)
- Width: 326 mm (12.8")
- Depth: 285 mm (11.2")
- Weight: 7.5 kg (16.5 lbs)

## ● Thermal

- Maximum ambient temperature: 40°C (104°F)
- Maximum surface temperature: 75°C (167°F)

## ● Control and Programming

- Setting & Addressing: 3- Digit LED display & 3 buttons
- Protocol: USITT DMX-512
- Control channels: 2
- 1 user-editable program up to 30 steps
- Stand-alone operation
- Master/Slave operation
- Auto- and music trigger
- Data in/out: Locking 3-pin XLR
- Built-in analyser for easy fault finding

## ● Electromechanical Effects

- Colour wheel: 15 dichroic filter + open
- Dimmer/Shutter: Full range dimming and variable strobe effect (max. speed = 4 flashes/sec.)

## ● Rigging

- Mounting bracket



DigitalSpot 7000 DT .....	100	●
DigitalSpot 3000 DT .....	102	●
Media Server Qube Control .....	104	●
Media Fusion Software .....	106	●
Media Fusion Qube Control Software .....	107	●



# DigitalSpot 7000 DT



DigitalSpot 7000 DT is ROBE's second Digital Moving Light Projector, based upon LCD and LED technology. This unique combination of a digital projector and two powerful RGBW LED modules offers amazing digital gobo effects and the projection of highly saturated colours – all in a single moving light fixture. The DigitalSpot 7000 DT emits 6.500 ANSI lumens from a single 330W projection lamp with an awesome contrast ratio of 2,000:1. Each of its two LED modules consists of 48 Luxeon Rebel RGBW LEDs and provides an extremely bright light output across the full colour spectrum. Offering DVI input and SDI input/output, the DigitalSpot 7000 DT is aimed at the top level professional markets and applications. Its brightness makes it one of the highest output and most affordable digital moving light projectors currently available. The DigitalSpot 7000 DT is an ideal tool for all professional entertainment and leisure applications including corporate events, concert touring, TV and theatres.

## ● Electrical specifications:

- Auto-switching power supply
- Input voltage range: 100-120V/ 200-240V AC, 50/ 60 Hz
- Power consumption: 800 VA

## ● Projector Specifications:

- Model: PLC-XP100L
- Light output: 6.500 ANSI lumens
- Lamp: 330 W NSHA
- Rated lamp life: 3.000 h (eco mode); 2.000 h (normal mode)
- Throw distance ratio: 1.8-2.4 : 1
- Contrast ratio: 2000:1
- LCD panel system: 1.3" TFT Active Matrix type, 3 panels
- Panel resolution: 1.024 x 768 dots
- Number of pixels: 2.359.296 (1.024 x 763 x 3 panels)

## ● Hardware

- Motherboard: MSI G31M-F
- Processor: Intel Core2 Duo E6750, 2.66 GHz, 1333 MHz FSB
- Memory: 1GB RAM
- Graphics card: nVidia 9800 GT
- Video capture card: AverMedia DVD EZMaker
- Hard disk: Western Digital 500GB Caviar SE16 3.5"
- Gigabit Ethernet

## ● Operation system

- Linux OS

## ● Graphic engine

- 4 digital gobo layers for image and video control
- Graphic engine supports a combined total of more than 60.000 original and user-created videos/gobos usable on all gobo layers
- Individual X and Y positioning and scaling for each gobo layer
- Layer Media Control Modes (Copy, Add, Subtract, Multi, Minimum and Maximum)
- Banner Effects creating action scripts for Images or Videos
- Digital Iris effect + 160 Masking effects
- Full Key-Stone correction
- Digital strobe effect
- CMY Image and Video Colour Mixing and CTC (Colour Temperature Correction)
- 2 Gobo (Image) Effect Engines per Layer
- 2 independent effect channels on each gobo layer with more than one hundred of effects
- Huge amount of Default Images/Videos
- Import of User Images or Videos
- Supported Image Formats: JPG, TGA, PNG, GIF, PCX, PNM, XPM and LBM (max. 4096 x 4096 pixel )
- Supported Video Formats: MPEG1, MPEG2
- Effect video synchronization
- Preview of projecting output through web interface
- Picture Merging effect in the field up to 8x8 segments
- Projection onto cylindrical/spherical surfaces and angular screens
- Video processing on all gobo layers from a remote streaming video server

## ● Electromechanical Effects

- Zoom
- Focus
- Mechanical iris

## ● Control

- 5" TFT LCD display & Robe navigation system
- Web access for total control of fixture (user library management)
- Media Content Synchronization in web interface
- 169 control channels max.

## ● Pan/Tilt

- Pan movement range: 530°
- Tilt movement range: 280°
- 16 bit movement resolution
- Controllable speed of Pan/Tilt movement
- Automatic Pan/Tilt position correction
- Built-in Pan/Tilt macro effects

## ● Integrated LedWash module

- Light source: 2 x 48 Luxeon Rebel LEDs (RGBW)
- Optical system: 25° beam angle
- RGB colour mixing
- Shutter and adjustable strobe sequences
- Full range dimming

## ● Connections

- Video inputs: Data projector: 1 x S-Video (Mini Din 4 pin)  
1 x VGA (Mini D-sub 15 pin)
- Graphic Engine: Standard:  
1 x S-Video (Mini Din 4 pin)  
1 x Composite video (RCA)  
Optional:  
1 x DVI-D, 1 x VGA (Mini D-sub 15 pin)  
1 x SDI/ASI (BNC)
- DMX data in/out: Locking 3-pin and 5-pin XLRs
- ArtNet: RJ 45 (Neutrik Ethercon)
- AC power input: 1.3 m power cord without plug  
2 x USB 2.0 (series A)

## ● Rigging

- Mounting points: 4 pairs of ¼-turn locks
- 2 x Omega bracket with ¼-turn quick locks
- Safety chain/cord attachment point

## ● Mechanical Specifications

- Height: 882 mm (34.7")
- Width: 542 mm (21.3")
- Depth: 629 mm (24.8")
- Weight: 48 kg (105.8 lbs)



# DigitalSpot 3000 DT



ROBE's DigitalSpot 3000 DT is the first Digital Moving Light Projector worldwide combining a LED-based Wash Light with a Digital Moving Light Projector. The fixture emits 2.700 ANSI lumens from a single 200W projection lamp with an awesome contrast ratio of 2,000:1 which is now available in an affordable and compact package featuring an additional REDWash Module (RED = Robe Emitted Diodes). DigitalSpot 3000 DT is an ideal tool for corporate events, clubs, TV and theater. It can be used in any application needing projected digital content, and the combination of the REDWash and projection effects means that the projection area can be framed in colours and textures from the LED wash elements while the projection remains in its original format.

## ● Mechanical specifications

- Height: 614 mm (24.2")
- Width: 533 mm (21.0")
- Depth: 431 mm (17.0")
- Weight: 28 kg (61.7 lbs)

## ● Electrical specifications

- Power supply: Electronic auto-ranging
- Input voltage range: 100-120V/200-240V AC, 50/60 Hz
- Power consumption: 450 VA

## ● Projector Specification

- Model: MP622
- Light output: 2.700 ANSI lumens
- Lamp: 200W
- Rated lamp life: 4.000 hours
- Aspect ratio: 4:3
- Resolution: XGA (1.024 x 768)
- Contrast ratio: 2.000:1 (full on/full off)
- Display technology: DLP by Texas Instruments
- Display colours: Full 16.7 million colour palette

## ● Environmental Specifications

- Operating ambient temperature range: 0-40°C
- Maximum housing temperature: 60°C

## ● Connections

- Video inputs: Data projector: 1 x S-Video (Mini Din 4-pin)  
1 x Composite video (RCA)  
Graphic Engine: 1 x S-Video (Mini Din 4-pin)  
1 x Composite video (RCA)
- DMX data in/out: Locking 3-pin and 5-pin XLR
- 2 x USB 2.0 connector (series A)
- ArtNet: RJ 45 (Neutrik Ethercon)
- AC power input: 1.5 m power cord without plug

## ● Hardware

- Motherboard: MSI G31M-F
- Processor: Intel Core2 Duo E6750, 2.66 GHz, 1333 MHz FSB
- Memory: 1GB RAM
- Graphics card: nVidia 8600 GT
- Video capture card: AverMedia DVD EZMaker
- Hard disk: Seagate Momentus 120 GB
- Gigabit Ethernet

## ● Operation system

- Linux OS

## ● Graphic engine

- 3 digital gobo layers for image and video control
- Graphic engine supports a combined total of more than 60.000 original and user-created videos/gobos usable on all gobo layers
- Individual X and Y positioning and scaling for each gobo layer
- Layer Media Control Modes (Copy, Add, Subtract, Multi, Minimum and Maximum)
- Banner Effects creating action scripts for Images or Videos
- Digital Iris effect + 160 Masking effects
- Full Key-Stone correction
- Digital strobe effect
- CMY Image and Video Colour Mixing and CTC (Colour Temperature Correction)
- 2 Gobo (Image) Effect Engines per Layer
- 2 independent effect channels on each gobo layer with more than one hundred of effects
- Huge amount of Default Images/Videos
- Import of User Images or Videos
- Supported Image Formats: JPG, TGA, PNG, GIF, PCX, PNM, XPM and LBM (max. 4096x4096 pixel )
- Supported Video Formats: MPEG1, MPEG2
- Effect video synchronization
- Preview of projecting output through web interface
- Picture Merging effect in the field up to 8x8 segments
- Projection on to cylindrical/spherical surfaces and angular screens
- Video processing on all gobo layers from a remote streaming videos

## ● Integrated LEDWash module

- Light source: 48 Luxeon Rebel LEDs (RGBW)
- Optical system: 25° beam angle
- RGBW colour mixing
- Adjustable strobe sequences
- Full range dimming

## ● Control

- 5" TFT LCD display & Robe navigation system
- Web access for total control of fixture

## ● Electromechanical effects

- Motorized focus
- Mechanical shutter

## ● Pan/Tilt

- Pan movement range: 530°
- Tilt movement range: 280°
- 16 bit movement resolution
- Controllable speed of Pan/Tilt movement
- Automatic Pan/Tilt position correction
- Built-In Pan/Tilt macros

## ● Rigging

- Mounting points: 2 pairs of ¼-turn locks
- 2 x Omega bracket with ¼-turn quick locks
- Safety chain/cord attachment point



# Media Server Qube Control



- **Installed software**
  - Media Fusion Qube Control Software
- **Mechanical Specifications**
  - Height: 1075 mm (42.3")
  - Width: 600 mm (23.6")
  - Depth: 770 mm (30.3")
  - Weight: 122 kg (269 lbs)

Full control of Robe's StageQube 324 LED panels is provided via the new Media Fusion Qube Control software running on Robe's Media Server Qube Control PC. Media Server Qube Control supports VGA-IN, S-video and Composite input in combination with all the effects of MediaFusion Qube Control Software on board. The hardware specification includes an Intel Core 2 Duo processor, ASUS P5N32 motherboard, 150 GB hard disc, ASUS V N7950GX2 graphics card and a 19" LCD display. The computer unit is fully flight cased for portability.

- **Hardware**
  - Motherboard: ASUS P5N32-SLI Premium
  - Memory: 2 GB, DIMM DDR2
  - Processor: Core 2 Duo Conroe E6400 2
  - Hard disk: Western Digital Raptor 150 GB, 10000rpm, SATA 150, 16 MB
  - Display: ASUS LCD "19", VW192S
  - Capture card 1: Phynx RGB-VGA/RGB
  - Capture card 2: Leadtek WinFast VC100 XP
  - Graphic card: Leadtek Winfast PX 8600 GTS
  - DVD drive: Samsung SH-S182D 8x8x18x18
  - Keyboard: C-Tech KB-9845
  - Mouse: Creative Laser Gamer Mouse HD7600L
  - Display: ASUS LCD "19", VW192S
- **Operation system**
  - Windows XP



## Media Fusion Software



Robe's Media Fusion Software is video software which aimed at lighting designers wanting to incorporate video into their creative work. Media Fusion Software will run on numerous computers, ranging from inexpensive laptops to powerful servers. It plays many different video file formats, and processes them through a large number of effects. It can be used in several different show environments, e.g. live shows and concerts, TV productions, clubs and bars, theatres, shops, museums and retail, trade shows as well as for architectural lighting applications.

### ● Main Functions

- Gives access to video loops and pictures - available through 256 banks of 256 visuals. The software can also use connected video inputs (e.g. live cameras) as a media source
- Entering text messages, used to customize Macromedia Flash files
- Setting up of the interface between computer and DMX lighting desk
- Setting up the characteristics of the video output, including using multiple projectors with soft-edging or keystone correction
- Simultaneous Playing of 8 layers media with optional effects
- Previews the active media and layers, and the final compositions
- Can be run from a laptop if the DMX console is not present

## Media Fusion Qube Control Software



Media Qube Control Software is a software that allows to seamlessly integrate real-time video in a light show by providing total control of the software from a DMX or ArtNet console. Serving up to 8 layers of videos and boasting a very wide array of effects and control parameters, Media Fusion is the ideal solution for lighting engineers wanting to blend video into light shows. Media Qube Control Software provides possibility of outputting the video signal into LED qube arrays, such as ROBE Stage Qubes, ROBE Arc Qubes or any other LED matrices.

### ● Main features:

- 255 libraries available containing each up to 255 visuals
- Layer transparency (dimmer)
- Effect setting for each layer (each effect can have up to 4 parameters)
- Position and size of the layer output
- Layer media control modes (Copy, Add, Subtract, Multi, Minimum and Maximum)
- Playback modes
- Movie Speed
- Chrominance and Luminance Keying
- Movie start and end frame
- Mapping on 3D objects (plane, sphere, cylinder)
- 3D Object rotation
- Color control
- Widescreen & multiscreen presentation
- DMX and ArtNet control
- Live preview
- User friendly graphic interface



# RED SERIES

## RED SERIES

REDWash 3•192 .....110 ●

REDMix 3•192 .....112 ●

REDWash 2•36 .....114 ●

REDBlinder 2•96 .....116 ●

REDBlinder 2•48 .....118 ●



# REDWash 3•192



REDWash 3•192 is ROBE's NEW powerful moving head Wash Light, which is based upon RED Technology (Robe Emitted Diodes) series. REDWash 3•192 provides a rectangular light field with a narrow beam spread. Unlike often seen similar effects this fixture provides a unique and fresh approach to concert touring, TV and Event Lighting applications.

## ● Power supply

- Electronic auto-ranging
- Input voltage: 90 - 250V AC, 50-60 Hz
- Max. power consumption: 450 VA

## ● Optic & Effects

- Light source: 192 Luxeon Rebel LEDs (RGBW)
- Optical system: 12° without lens-array, 25° lens-array (standard); 45° and 45°x15° lens-array (optional)
- Possibility of fitting additional frost film filters
- Led Life Expectancy: minimum 60.000 hours
- Typical Lumen Maintenance: 70% @ 60.000 hours
- RGBW colour mixing
- Built-in colour macros
- Adjustable strobe sequences
- Fine dimmer
- White colour balance adjusting

## ● Electronics

- Control panel: graphic LCD display and ROBE navigation system
- Control: USITT DMX 512(RDM support), Art-Net protocol, ready for ACN
- DMX protocol modes: 5 (8, 16, 24 or 28 control channels)
- Control options: DMX, Auto-trigger, Audio-trigger
- Operations modes: DMX, Stand-alone
- Manual control of all effects via control panel

## ● Strobe

- Strobe effect with variable speed (max. 20 flashes per second)
- Pre-programmed random strobe pulse-effects

## ● Dimmer

- Smooth dimming from 0 - 100 %

## ● Connections

- DMX data in/out: Locking 3-pin and 5-pin XLR
- AC power input: 1.5 m power cord without plug
- Ethernet: RJ45

## ● Pan/Tilt

- Pan movement range 530°
- Tilt movement range 280°
- 8/16 bit movement resolution
- Automatic pan/tilt position correction
- Built-in Pan/Tilt macros

## ● Rigging

- Mounting points: 2 pairs of ¼-turn locks
- 2x Omega bracket with ¼-turn quick locks
- Safety chain/cord attachment point

## ● Temperatures

- Maximum ambient temperature: 40°C (104°F)
- Maximum housing temperature: 70°C (158°F)

## ● Mechanical Specifications

- Height: 588 mm (23.2")
- Width: 514 mm (20.2")
- Depth: 328 mm (12.9")
- Weight: 22 kg (48.5 lbs)

## ● Optional accessories

- Remote control IR
- 45° lens module
- 45° x 15° lens module





# REDMix 3•192



REDMix 3•192 is based on RED (Robe Emitted Diodes) Technology. The fixture provides a rectangular light field with manual control of beam spreads, offering a unique, fresh approach to concert touring, television and event lighting. REDMix 3•192 is supplied with a standard 12-degree lens configuration and 25-degree 'Egg Crate' lens module, 45 and 45 x 15 degree 'Egg Crate' lens modules are also available as optional accessories. The fixture provides stunning saturated colour tones with extreme intensity levels at double the luminous flux levels of other wash lights using 700W discharge lamp sources. REDMix 3•192 has a linear optical layout making it an ideal solution for flooding areas with intense colour tones. It's 4-section concept produces stunning rainbow and other colour and chase effects.

## ● Power supply

- Electronic auto-ranging
- Input voltage: 90 - 250V AC, 50-60 Hz
- Max. power consumption: 400 VA

## ● Optic & Effects

- Light source: 192 Luxeon Rebel LEDs (RGBW)
- Optical system: 12° without lens-array, 25° lens-array (standard); 45° and 45° x 15° lens-array (optional)
- Possibility of fitting additional frost film filters
- Led Life Expectancy: minimum 60.000 hours
- Typical Lumen Maintenance: 70% @ 60.000 hours
- RGBW colour mixing
- Built-in colour macros
- Adjustable strobe sequences
- Fine dimmer
- White colour balance adjusting

## ● Electronics

- Control panel: 4-digit LED display with 4 buttons
- Control: USITT DMX 512 (RDM support)
- DMX protocol modes: 5 (4, 8, 19 or 20 control channels)
- Control options: DMX, Auto-trigger, Audio-trigger
- Operations modes: DMX, Stand-alone, Master/Slave
- Manual control of all effects via control panel

## ● Strobe

- Strobe effect with variable speed (max. 20 flashes per sec.)
- Pre-programmed random strobe pulse-effects

## ● Dimmer

- Smooth 16-bit dimming from 0 - 100 %

## ● Connections

- DMX data in/out: Locking 3-pin and 5-pin XLR
- AC power input/output: 2x Neutrik connectors

## ● Rigging

- Adjustable mounting bracket

## ● Temperatures

- Maximum ambient temperature: 40°C (104°F)
- Maximum housing temperature: 70°C (158°F)

## ● Mechanical Specifications

- Height: 350 mm (13.8")
- Width: 372 mm (14.7")
- Depth: 352 mm (13.9")
- Weight: 10 kg (22.1 lbs)

## ● Optional accessories

- 45° lens module
- 45° x 15° lens module



# REDWash 2•36



The REDWash 2•36 is a powerful LED moving head with thirty-six 1 Watt Luxeon K2 LEDs offering RGB colour mixing with a virtually unlimited selection of colours. It's the first in a completely new line of LED moving heads from Robe. The LED fixtures will feature all the engineering quality, reliability and robustness for which Robe is renowned. The REDWash 2•36 has 12 red, 12 green and 12 blue K2 LEDs and pre-programmed white. With electronic dimming from 0 - 100 %, effects include high speed strobing up to 25 FPS and the ability to strobe in any colour combination. Applications include architectural, TV studios, theatre, concerts and live events and all types of venues.

## ● Source

- High-Power Luxeon K2 LEDs
- 12 Red K2 LEDs, 12 Green K2 LEDs, 12 Blue K2 LEDs
- < 50.000 hrs Rated Life

## ● Beam angle

- Standard 6° beam angle lenses
- Optional 25° beam angle lenses

## ● Movement

- Extremely precise Pan and Tilt movement with 8 or 16 bit resolution
- Tracking or Vector movement control
- 530° Pan and 280° Tilt range of movements
- Pan and Tilt automatic position correction

## ● Frost, diffusion

- Soft and dense frost filters for even light distribution

## ● Colours

- 16,7 million colours (24 bit)
- Pre-programmed colours & rainbow effect
- White balance pre-programmed via LED control panel

## Dimmer, Strobe

- Electronic dimmer for light output adjustment from 0 to 100%
- High speed white or full colour strobe, flash rate 1-25 fps

## Thermal

- Maximum ambient temperature: 40°C (104°F)
- Maximum housing temperature: 65°C (149°F)

## Mechanical Specification

- Height: 418 mm (16.5")
- Width: 326 mm (12.8")
- Depth: 362 mm (14.3")
- Weight: 8.8 kg (19.3 lbs)

## Control and Programming

- Protocol: USITT DMX-512
- Control channels: 8 or 14
- Control options: DMX, auto-trigger
- Operation modes: Master/Slave, Stand-alone, Audio-trigger
- Programs: 6 built-in programs + 3 user editable programs up to 30 steps each
- LED Control panel: Fixture addressing & parameter settings, Built-in analyser for easy fault finding
- Manual control of all DMX channels via LED control panel
- Data in/out: Locking 3-pin XLR

## Power supply

- Input Voltage: 100-240V, 50/60Hz
- Max. Power Consumption: 180 VA



# REDBlinder 2•96



The REDBlinder 2•96 is fitted into the industry standard 8-lite casing and offers set and lighting designers all the options. REDBlinder is a LED version of the popular 8-lite Molefay, a staple of the rock "n" roll world, featuring 8 LED modules, each with 12 RGB K2 LEDs. Each four pairs of modules are separately controllable. This product is aimed at all stage lighting markets and television productions and for arenas and larger venues.

- **Source**
  - High-Power Luxeon K2 LEDs
  - 32 Red K2 LEDs, 32 Green K2 LEDs, 32 Blue K2 LEDs
  - < 50.000 hrs Rated Life
- **Beam angle**
  - 25° beam angle of each LED
- **Frost, diffusion**
  - Optional frost filters (glass or film) for even light distribution
- **Colours**
  - 16,7 million colours (24 bit)
  - Pre-programmed colours & rainbow effect
  - Dynamic colour balance between white and red, green, blue colours during production
  - White balance pre-programmed via LED control panel
- **Dimmer, Strobe**
  - Electronic dimmer for light output adjustment from 0 to 100%
  - High speed white or full colour strobe, flash rate 1-25 fps

- **Mechanical Specification**
  - Height: 810 mm (31.9")
  - Width: 480 mm (18.9")
  - Depth: 190 mm (7.5")
  - Weight: 18 kg (39.7 lbs)
- **Thermal**
  - Maximum ambient temperature: 40°C (104°F)
  - Maximum housing temperature: 80°C (176°F)
- **Control and Programming**
  - Protocol: USITT DMX-512
  - Control options: DMX, Auto-trigger
  - Operation modes: Master/Slave, Stand-alone
  - Programs: 6 built-in programs + 3 user editable programs up to 30 steps each
  - Display: 4 digit LED
  - Manual control of all DMX channels via LED control panel
  - 4 pairs of LED modules
- **DMX channels**
  - Mode 1: 15 channels
  - Mode 2: 12 channels
  - Mode 3: 6 channels
  - Mode 4: 3 channels
- **Input**
  - Control: DMX 512
  - DMX connection: 3-pin or 5-pin XLR-sockets
- **Power supply**
  - Input Voltage: 100-240V, 50/60Hz
  - Max. Power Consumption: 260VA
- **Optical accessories**
  - Set glass frost
  - Set film frost



# REDBlinder 2•48



The REDBlinder 2•48 is a 4-way version of the REDBlinder 2•96. The unit is fitted into the industry standard 4-lite casing and offers set and lighting designers all the options. It has 4 LED modules, each with 12 RGB K2 LEDs. Each two pairs of modules are separately controllable. This product is aimed at all stage lighting markets and television productions and for arenas and larger venues.

- **Source**
  - High-Power Luxeon K2 LEDs
  - 16 Red K2 LEDs, 16 Green K2 LEDs, 16 Blue K2 LEDs
  - < 50.000 hrs Rated Life
- **Beam angle**
  - 25° beam angle of each LED
- **Frost, diffusion**
  - Optional frost filters (glass or film) for even light distribution
- **Colours**
  - 16,7 million colours (24 bit)
  - Pre-programmed colours & rainbow effect
  - Dynamic colour balance between white and red, green, blue colours during production
  - White balance pre-programmed via LED control panel
- **Dimmer, Strobe**
  - Electronic dimmer for light output adjustment from 0 to 100%
  - High speed white or full colour strobe, flash rate 1-25 fps

- **Mechanical Specification**
  - Height: 510 mm (20.0")
  - Width: 480 mm (18.9")
  - Depth: 190 mm (7.5")
  - Weight: 12 kg (26.5 lbs)
- **Thermal**
  - Maximum ambient temperature: 40°C (104°F)
  - Maximum housing temperature: 80°C (176°F)
- **Control and Programming**
  - Protocol: USITT DMX-512
  - Control options: DMX, Auto-trigger
  - Operation modes: Master/Slave, Stand-alone
  - Programs: 6 built-in programs + 3 user editable programs up to 30 steps each
  - Display: 4 digit LED
  - Manual control of all DMX channels via LED control panel
  - 2 pairs of LED modules
- **DMX channels**
  - Mode 1: 9 channels
  - Mode 2: 6 channels
  - Mode 3: 6 channels
  - Mode 4: 3 channels
- **Input**
  - Control: DMX 512
  - DMX connection: 3-pin or 5-pin XLR-sockets
- **Power supply**
  - Input Voltage: 100-240V, 50/60Hz
  - Max. Power Consumption: 135VA
- **Optical accessories**
  - Set glass frost
  - Set film frost



# LED VIDEO WALL

## LED VIDEO WALL

StageQube 324 ..... 122



# StageQube 324



The StageQube 324 is a new-generation LED panel. Designed as a plug & play applications, it doesn't require any external power supply and control boxes. The complete electronic is located in the IP54 housing. Due to its integrated rigging system, even huge systems can be built up very easily. The resolution of StageQube 324 is 18 x 18 px at a size of 80 x 80 cm (pixel pitch 4.44 cm). The StageQube 324 system uses a Video input (VGA) that is connected to the StageQube Server. Using a Robe Media Hub, it can even be controlled via DMX – intuitive control from the lighting desk.

## ● Pixel

- 18 x 18 = 324 RGB – high efficiency LEDs (506,25 px/m<sup>2</sup>)
- Internal Resolution: 14 Bit
- SBAM Modulation
- Temperature compensated LED drivers

## ● Optical specification

- Clear covering (PETG with a transmission rate of 90%)
- Snap-on diffuser (PETG with a transmission rate of 80%)
- Beam angle without diffuser: approx. 120°, with diffuser: approx. 170°

## ● Electrical specification

- Integrated Power Supply
- Input voltage: 110 - 240V @ 50/60Hz
- Power consumption: 220W max.
- $\lambda = 0,95$  at maximum charge
- Leakage current  $\leq 360 \mu\text{A}$

## ● Mechanical specification

- Dimensions: 800 x 800 x 120 mm (with diffuser: 800 x 800 x 180 mm)
- Robust metal framing
- Integrated mechanical connection system
- Connector panel secured with access cover
- Adaptors for rigging systems
- Inflammability: B1

## ● Controlling

- Input source: VGA at max. 60 frames/s
- One control Unit (StageQube Server) grabs the input signal and distributes to all panels in the system
- Preview window in the QubeControl software
- Very low latency (input-output: max. 50 ms)

## ● Realtime parameters (via QubeControl)

- Brightness 1 - 100% (255 steps. Exponential curve)
- Intensity red 1 - 100% (255 steps. Exponential curve)
- Intensity green 1 - 100% (255 steps. Exponential curve)
- Intensity blue 1 - 100% (255 steps. Exponential curve)
- Gamma 1.0 - 3.0 in steps of 0.1
- Release time 0 - 1000 ms in steps of 4 ms
- LED frame rate 600 - 1.100 frames/s in steps of 2 frames/s
- Scaling factor of the grabbed videostream
- Frame size and position
- Size and from of the StageQube 324 array

## ● Startup procedure, wiring and controlling

- Intuitive, graphical and fast startup without any manual addressing
- Definition of non-rectangular arrays
- Distribution of video data over 1000Base - T - Ethernet (CAT 5e, 6 or 7 cable)
- Automatic brightness detection and optimization for maximum brightness of the array, important for dry-hire use!
- Daisy chain of power cable for up to 8 StageQube 324 with Neutrik EtherCon connectors
- Integrated Ethernet switch with 3 Ethernet ports (Neutrik Ethercon)
- Daisy chain of up to 8 StageQube 324's Ethernet connection, the third Ethernet connector allows (theoretically) 255 StageQube 324 in a system without any additional hardware (tree structure)



MediaSpinner 50 AT .....	126	●
StageBanner 50 AT .....	128	●
StageBanner 10 AT .....	130	●



# MediaSpinner 50 AT



The MediaSpinner 50 AT has the same features as the StageBanner 50 AT and is enhanced with a panel for the connection of audio, video and power supplies, so plasma screens, LCD displays, projectors or loudspeakers and similar devices can be attached and rotated. The MediaSpinner 50 AT is constructed to enable the display and rotation of advertising banners - at exhibitions, on stage, in theatres and other applications where advertising needs to be highlighted and showcased.

## ● Electrical Specification

- Wiring options: EU model - 208/230/240V, 50/60Hz, US model - 100/120/208/230/240V, 50/60Hz
- Power consumption: 30VA

## ● Mechanical Specification

- Height: 217 mm (8.5")
- Width: 474 mm (18.7")
- Length: 445 mm (17.5")
- Weight: 13.4 kg (29.5 lbs)

## ● Thermal

- Maximum ambient temperature: 40°C (104°F)

## ● Electronics

- Addressing, special functions setting via control panel with 4-digit LED display
- Readout fixture usage, receiving DMX values, temperature, etc.
- Built-in analyzer for easy fault finding, error messages
- Built-in demo sequences
- Silent cooling
- Master/Slave operation
- Stand-alone operation
- Digital serial input DMX-512
- 4 control channels

## ● Pan

- Pan movement range 440°
- 16-bit movement resolution
- Automatic pan position correction
- Remotely controllable speed of pan movement for easy programming
- Movement control: Tracking and vector

## ● Rigging

- Standing directly on the floor
- Mounting horizontally with 2 Omega brackets
- 2 truss orientation
- Safety chain/cord attachment point

## ● Load Specification

- Max. load: 50 kg (110.2 lbs)
- Max. current: 20A
- Fixation: 2x Omega brackets with ¼-turn quick locks
- Outputs for a load: RGBHV, audio, DMX and power supply





# StageBanner 50 AT



The StageBanner 50 AT increases load capacity of StageBanner 10 AT on 50 kg. This fixture is also fully DMX controllable, runs in a stand-alone mode, enabled by on-board programming via a 4-digit LED display on the unit's base. Master/Slave operation is also available. Rotation is possible in both directions at various speeds, including continuous rotation, 16-bit DMX resolution ensures the speed of rotation is smooth and precise. A virtually silent cooling system makes the StageBanner 50 AT ideal for situations where low noise is crucial. A neat rigging system utilizes two Omega clamps.

## ● Electrical Specification

- Wiring options: EU model - 208/230/240V, 50/60Hz, US model - 100/120/208/230/240V, 50/60Hz
- Power consumption: 30VA

## ● Mechanical Specification

- Height: 217 mm (8.5")
- Width: 474 mm (18.7")
- Length: 445 mm (17.5")
- Weight: 13.4 kg (29.5 lbs)

## ● Thermal

- Maximum ambient temperature: 40°C (104°F)

## ● Electronics

- Addressing, special functions setting via control panel with 4-digit LED display
- Readout fixture usage, receiving DMX values, temperature, etc
- Built-in analyzer for easy fault finding, error messages
- Built-in demo sequences
- Silent cooling
- Master/Slave operation
- Stand-alone operation
- Digital serial input DMX-512
- 4 control channels

## ● Pan

- Continuous rotation
- 16-bit movement resolution
- Automatic pan position correction
- Remotely controllable speed of pan movement for easy programming
- Movement control: Tracking and vector

## ● Rigging

- Standing directly on the floor
- Mounting horizontally with 2 Omega brackets
- 2 truss orientation
- Safety chain/cord attachment point

## ● Load Specification

- Max. load: 50 kg (110.2 lbs)
- Fixation: 2x Omega brackets with ¼-turn quick locks



# StageBanner 10 AT



The DMX-controlled StageBanner 10 AT enables the displaying and rotation of advertising banners at exhibitions, on stages and in theatres. It's perfect for retail environments and other applications where advertising needs to be highlighted. The StageBanner 10 AT also runs in stand-alone mode, easily programmed via the onboard 4-digit LED display on the base. Up to 3 programmes can be stored, each containing up to 99 steps. Master/Slave operation is also available, so several StageBanners can be connected together and controlled from one unit. Rotation is possible in both directions in various speeds and very smooth and precise movement is guaranteed by the utilisation of 16-bit resolution.

## ● Electrical Specification

- Wiring options: EU model - 208/230/240V, 50/60Hz, US model - 100/120/208/230/240V, 50/60Hz
- Power consumption: 25VA

## ● Mechanical Specification

- Height: 195 mm (7.7")
- Width: 376 mm (14.8")
- Depth: 438 mm (17.2")
- Weight: 12 kg (26.5 lbs)

## ● Thermal

- Maximum ambient temperature: 45°C (113°F)

## ● Control and Programming

- Protocol: USITT DMX-512
- Control channels: 4
- Built-in demo sequences
- Silent cooling
- Master/Slave operation
- Stand-alone operation
- Display: 4-digit LED display
- Pan: 16-bit movement resolution, automatic position correction
- Movement control: Tracking and vector
- Built-in analyzer for easy fault finding

## ● Pan

- Continous rotation
- 16-bit movement resolution
- Automatic pan position correction
- Remotely controllable speed of pan movement for easy programming
- Movement control: Tracking and vector

## ● Rigging

- Mounting points: 4 pairs of ¼-turn locks
- 2x Omega brackets with ¼-turn quick locks
- Mounting horizontally with 2 Omega brackets

## ● Load Specification

- Max. load: 10 kg (22 lbs)
- Fixation: 2x Omega brackets with ¼-turn quick locks



## CONTROLLERS

DreamBox .....	134	●
DMX Control 1536 .....	136	●
DMX Control 1024 .....	138	●
DMX Control 512 .....	140	●
DMX Control 480 .....	142	●
DMX Control 24 Pro CT .....	144	●
DMX Control 24 CT .....	146	●
Cyber Control .....	147	●



# DreamBox



The DreamBox is a multi-functional tool box with 2 DMX ports and one USB port. This unit communicates with a PC or Laptop via USB. The DreamBox provides fixture software updates and with additional ROBE RDM-network software provides RDM (Remote Device Management) functionality. The DreamBox supports RDM - new control protocol featuring AutoPatch and Fixture Status Monitoring. The DreamBox can be used in combination with Robe Media Fusion software as DMX input from any DMX console.

## ● Supported operating systems

- Windows 98, ME, 2000, XP, Vista, Server 2003, Linux

## ● Electrical

- No extra PSU needed
- Galvanic isolation of 1kV between DMX Input and USB (DMX Output and USB)

## ● Function

- USB/DMX converter
- Provides fixture software updates
- Brings RDM communication protocol into DMX 512 control systems
- RDM-network software allows:
  - Fixture Status Monitoring
  - Fixture Personality Setting
  - AutoPatch

## ● Connection

- DMX data in/out: Locking 5-pin XLR
- USB 2.0 (series B)

## ● Mechanical Specification

- Rugged aluminium housing
- Height: 54 mm (2.1")
- Width: 86 mm (3.4")
- Depth: 108 mm (4.3")
- Weight: 0.3 kg (0.7 lbs)



# DMX Control 1536



This new and the most effective controller in Robe range comes with 3 DMX 512 outputs, which enables to control up to 1536 DMX channels or 48 fixtures of up to 32 channels each. A show can be created from up to 4752 scenes, consisting of presets and chases. The range of 1152 shows, presets and/or chases can be recorded into 32 pages. The design was created with 48 Multi Function Quick access buttons. Flash memory is used, which allows software updates via compact flash card.

## ● Electrical Specification

- Power supply: 115/230V, 50/60Hz
- Voltage selection switch

## ● Mechanical Specification

- Height: 178 mm (7.0")
- Width: 584 mm (23.0")
- Length: 711 mm (28.0")
- Weight: 17 kg (37 lbs)

## ● Control and Programming

- Control 48 moving light fixtures up to 32 channels each
- 1536 DMX Channels
- 4752 programmable scenes
- 1152 programmable chases
- 1152 programmable shows
- 1152 programmable presets
- 48 fixture groups
- 3 DMX Universe
- Fade times up to 90 minutes
- Run 16 chases simultaneously
- Run 17 shows simultaneously
- Playback scenes using buttons or playback faders
- Effect generator to create chase effects.
- Factory ready color, gobo, focus & effect presets
- Large moving light fixture library available
- Scene preview with "Go" button
- Solo feature allows scenes to track through or play solo
- Scenes can be combined and recorded as new scenes
- Scenes, shows, chases and presets can be assigned to the playbacks.
- Playbacks can manually fade channels (LTP mode) or trigger timed fades while manually controlling dimmer levels (HTP mode)
- 80 Character backlit display for easy programming
- 4 menu and control data wheels
- 48 Multi function Quick access buttons
- 8 dedicated playback faders with 32 pages
- 8 flex faders with page selection for moving light channels, conventional dimmers or additional playbacks.
- Pan/tilt joystick with coarse/fine control
- Grand master fader
- Flex master fader
- Go, stop and back buttons
- Blackout, audio and beat buttons

## ● Connections

- 3x 3-Pin DMX Outputs
- 3x 5-Pin DMX Outputs
- Midi-In port
- CF-drive for memory back up, loading fixture profiles and software updates
- PS2 Keyboard input
- RS-232 Port, for PC interface
- RCA Audio input for Chases
- 2x USB LITE connectors (for gooseneck lamp)



# DMX Control 1024



Thanks to two DMX 512 outputs, it is possible with this fixture to control up to 1024 DMX channels - or 48 lighting fixtures of up to 32 channels each. The DMX Control 1024 supports Robe and all other popular lighting brands. A show can be created from up to 4752 scenes, consisting of presets and chases. The range of 1152 shows, presets and/or chases can be recorded into 24 pages. Flash memory is used, which allows software updates via a compact flash card. The DMX Control 1024 is suitable for all range of AT, CT and LT series.

## ● Electrical Specification

- Power supply: 120/220V via external Power Supply 9-12V DC

## ● Mechanical Specification

- Height: 102 mm (40.2")
- Width: 483 mm (19.0")
- Length: 267 mm (10.5")
- Weight: 4.5 kg (9.9 lbs)

## ● Control and Programming

- Real time control of Moving heads and Scanners
- Total 1024 DMX Channels, 2 Universe Outputs
- Control 48 Projectors up to 32 channels each
- 48 fixture groups
- 4752 Programmable Scenes
- 1152 Programmable Presets
- 1152 Programmable Chases
- 1152 Programmable Shows
- Effects Engine
- Large Fixture Library
- Factory ready Color, Gobo, Focus and Effects Presets
- Easily Name Scenes, Chases or Shows using Standard Computer KEY BOARD
- MIDI Function
- 4 Large Rotary Wheels for Menu and Control
- 48 Multi function buttons
- 8 Faders x 4 Banks
- Joystick for PAN and TILT operation
- Desk Lamp socket - XLR connector
- 2x (3pin) + 2x (5pin) DMX Outputs
- 2x polarity switch per output
- Midi-In port, Midi-Out port
- Compact flash card drive
- PS/2 KEY BOARD input
- RCA Audio input

## ● Rigging

- Rack size: 19" 4U rack mountable, 6 spaces



# DMX Control 512



The DMX Control 512 offers control of up to 16 fixtures with a maximum of 32 channels each. The DMX Control 512 supports ROBE and all other popular lighting brands. A show of up to 1024 Scenes can be created consisting of Presets and Chases. The DMX Control 512 uses Flash memory for easy software updates via a computer (RS 232). The DMX Control 512 is suitable for all range of AT, CT and LT series.

## ● Electrical Specification

- Power supply: 120/230V via external Power Supply 9V DC/500mA

## ● Mechanical Specification

- Height: 120 mm (4.72")
- Width: 133 mm (5.24")
- Length: 483 mm (19.0")
- Weight: 3.2 kg (7.1 lbs)

## ● Control and Programming

- Real time control of Moving Heads and Scanners
- Total 512 DMX Channels
- Control 16 Projectors up to 32 channels each
- 1024 Programmable Scenes
- 512 Programmable Presets
- 256 Chases + 48 pre-recorded
- 256 Shows
- Effects Engine
- Large Fixture Library
- Factory ready Color, Gobo, Focus, and Effects Presets
- MIDI Function
- 1 Large rotary wheel for Menu and Control
- 8 Faders x 4 Banks
- 1 (3pin) DMX Output
- 1 Polarity switch
- MIDI-In port, MIDI-Out port
- RS-232 Port for PC interface
- RCA Audio Input for Chases

## ● Rigging

- Rack size: 19" 3U rack mountable, 3 spaces



# DMX Control 480



## ● Control and Programming

- Realtime control of Moving heads and Scanners
- Total 480 channels, 2 DMX Outputs
- Control 20 projectors up to 24 channels each
- 20 Fixture Groups
- 750 Programmable Scenes
- 255 Programs with max. 50 steps
- 100 Records with max. 50 steps
- 20 Programmable Chasers with adjustable speed
- 100 Projectors in Library (50 Projectors are user definable)
- 16 bit precision control of PAN and TILT movement
- LCD backlight display with adjustable contrast and backlight
- Sliders for direct control of light intensity during running scenes, programs and records
- Parallel running 2 scenes, programs and records
- Continually adjustable Step time and Fade time
- Macro functions – Color and Gobo values can be assigned to the buttons
- User definable system default settings
- 2 encoder Wheels for smooth control of PAN and TILT movement
- Microphone music control facility
- Remote configuration, control and programming of projectors
- Security Code protection
- Desk Lamp socket
- 32 MB Multi Media Card – which allows saving recorded scenes, programs and records. MM Card contains 60 banks, possibility to save 750x60 scenes, 255x60 programs, 100x60 records

## ● Rigging

- Rack size: 19" 4U rack mountable

The DMX Control 480 controls up to 20 projectors with a maximum of 24 DMX channels each. The range of 750 scenes, 255 programs with 50 scenes each and 100 records with 50 program combinations offers an incredible flexibility when creating shows. The timing function in each program enables precise control and coordination with the music. The DMX Control 480 enables also the remote configuration of some Robe projectors. 32MB Multi Media Card allows saving created shows. The DMX Control 480 is suitable for all range of CT, LT and AT series (only fixtures with 24 DMX channels maximum).

## ● Electrical Specification

- Wiring options: 230V or 115V, 50/60 Hz

## ● Mechanical Specification

- Height: 77.5 mm (30.5")
- Width: 482 mm (10.0")
- Length: 173 mm (68.1")
- Weight: 3 kg (6.6 lbs)





# DMX Control 24 Pro CT



The DMX Control 24 Pro CT gives the user fast access with DMX controlled fixtures. The layout is made so any fixture using up to 6 DMX channels can be easily controlled.

## ● Electrical Specification

- Wiring options: 100-125, 200-240V, 50/60Hz

## ● Mechanical Specification

- Height: 75 mm (3.0")
- Width: 123 mm (4.8")
- Length: 340 mm (13.4")
- Weight: 2 kg (4.4 lbs)

## ● Control and Programming

- Number of control channels: 24
- Up to 4 projectors each of max. 6 channels can be individually controlled
- 10 freely-programmable programs with up to 32 steps each
- 20 built-in programs
- Manual control of all projectors by joystick
- Manual strobe and black-out control
- Audio, Manual and Auto trigger
- 3 pin XLR output
- Sound input: ¼ mono jack
- Built in programs for ClubScan 150/250 CT, ClubRoller 150/250 CT, ClubSpot 150 CT, ClubSpot 160 CT

## ● Rigging

- Can be operated standing on a table, for rack mounting
- 3U rack adapter available



## DMX Control 24 CT



The DMX Control 24 CT is a compact DMX controller with 24 DMX control channels. The built-in microphone and audio input connector allows the program to be perfectly triggered to the beat of the music.

### ● Electrical Specification

- Wiring options: 100-125, 200-230V AC, 50/60Hz

### ● Mechanical Specification

- Height: 75 mm (3.0")
- Width: 120 mm (4.7")
- Length: 155 mm (6.1")
- Weight: 0.5 kg (1.1 lbs)

### ● Control and Programming

- Number of control channels: 24
- Up to 4 projectors each of max. 6 channels can be individually controlled
- Slow, medium, fast and random speeds of Pan and Tilt movements
- Manual strobe and black-out control
- Audio, Manual and Auto trigger
- 3 pin XLR output
- Sound input: ¼" mono jack
- Built in programs for ClubScan 150/250 CT, ClubRoller 150/250 CT, ClubSpot 150 CT, ClubSpot 160 CT

### ● Rigging

- Can be operated standing on a table, for rack mounting 3U rack adapter available

## Cyber Control



Cyber Control is designed for users preferring to use a computer rather than a conventional lighting console for show and exhibition build-up/programming periods. It is extremely quick, easy and logical to learn, and creates a perfect visualization of all types of lighting fixtures (including conventional like PARS, ACLs, Profiles, Molefeyes, etc) and all parameters of intelligent lights. The end result is a sophisticated 3D visualization of the show, including realtime beam, gobo and iris simulations. The PC-based software includes a large fixture library of the most popular and commonly found moving lights.

### ● CyberCue / CyberPro (USB/DMX Out/In)

CyberCue and CyberPro enable a show to be created on computer and run directly from a PC using a USB interface - a hardware tool supplied with the software. Once the show is completed, the data can be uploaded into the USB Interface, the PC can be disconnected, and the show actually run from the Interface - thanks to "Stand-Alone" mode.

### ● CYBER PRO – EXTRA (USB/DMX Out/In)

CyberPro contains the multimedia extension EASY SHOW, allowing users to add multimedia music and image files (e.g. WAV, MP3, CD, AVI, MPEG, etc.) into their onscreen show. Harnessing the power and potential of the 3D visualiser, the simulations will play-back with these multimedia files when using CyberPro.

### ● VISUAL CONTROL (USB/DMX In)

A special version of the software - Visual Control - enables the "downloading" of show data from a lighting desk to a computer for offline editing. Visual Control works with new USB-DMX IN interface allowing to connect a DMX signal coming from any external DMX controller. Visual Control is able to show beam - pan/tilt, static and rotating gobos, color wheels, iris, CMY color mixing, shutter, dimmer and zoom of any lighting fixtures.



# FOG AND HAZE

## FOG AND HAZE

FOG 1500 FT .....	150	●
FAZE 1000 FT .....	151	●
HAZE 400 FT .....	152	●
FOG Fluids .....	153	●



## FOG 1500 FT



The FOG 1500 FT fogger is the most advanced machine available for the professional performance market. Its streamlined, stylishly contoured body features a 100% pure aluminium heater, a heavy-duty and silent running pump and proprietary circuit design. This highly efficient and powerful heater produces a clean, dry, highly efficient fog output. A customized rubber pump mounting helps the pump to achieve virtual silence. The bespoke designed circuitry is 100% resistant to external power interference and so guarantees complete thermal control stability. This combination of great features and advanced design make the FOG 1500 FT an obvious choice for pro rental companies and their client base of theatres, TV studios and major staged events.

### Description

- Power: 230V/50Hz
- Heater: 1,500W
- Output: 20,000 Cu.ft./min.
- Heat up time: 11 min.
- Liquid Consumption Rate: 13 min./liter (100% Output)
- Tank Capacity: 6 liter
- Low Fluid Indicator: Blue LED
- One DMX control channel
- 10 meter wired remote control module included
- Weight: 15.5 kg (34.2 lbs)
- Dimensions: 646 x 240 x 190 mm (25.4 x 9.4 x 7.5")

## FAZE 1000 FT



The versatile FAZE 1000 FT Fazer is equipped with the most sophisticated features and new technology including an aluminium cast heater, a very quiet pump, high precision PCB design and controllable twin fans. The new high efficiency heater technology ensures low fluid consumption of less than one litre per two hours of continuous fogging (30% output). The durable twin fans and the DMX FOG CONTROL module ensure high precision output control. High quality bearings in the fans allow silent operation, making the machine ideal for use in noise sensitive environments like theatres and TV studios. With a small degree of fine-tuning, a perfect haze of fine particles can be achieved. Minimal residue reduces potential damage to other sensitive equipment in the environment. The FAZE 1000 FT is the best choice for stage and studio professionals.

### Description

- Power: 240V/50Hz
- Heater: 1,000W
- Output: 3,500 Cu.ft./min.
- Heat up time: 12 min.
- Liquid Consumption Rate: 45 min./liter (100%), 2 Hrs./liter (30%)
- Tank Capacity: 2.5 liter
- Two DMX control channel
- 10 meter wired remote control module included
- Weight: 20.5 kg (45.2 lbs)
- Dimensions: 635 x 275 x 281 mm (25 x 10.8 x 11.1")



## HAZE 400 FT



The HAZE 400 FT is Robe's professional hazer. The machine is capable of producing very large quantities of haze very quickly and quietly. The specially designed air compressor is vibration free and virtually silent in operation. In addition, inbuilt onboard DMX makes full control of the HAZE 400 FT easy. The HAZE 400 FT delivers a high volume of fine, translucent haze into any environment and uses a oil-based haze liquid.

### Description

- Power: 230V/50Hz
- Tank capacity: 2.5 liters
- Output: 2,500 Cu.ft/min.
- One DMX control channel
- 10 meter wired remote control module included
- Weight: 18.5 kg (34.2 lbs)
- Dimensions: 500 x 320 x 250 mm (19.7 x 12.6 x 9.8")
- Options: 10 m remote control extension cable

## FOG Fluids



FOG Fluids come in three different types: Standard Fog produces a light fog which disappears quickly, Performance Fog creates a moderately dense and durable fog, Premium Fog produces an extremely dense and very long-lasting fog. Premium Haze is a high density liquid for Hazers.

All of the liquids are water-based compositions that leave no oily residue. They are odorless, non-irritating, non-toxic and non-flammable. All fluids are available in five liter tanks.



Single DS7000 Touring Case .....	156
Single DS3000 Touring Case .....	157
Dual DS3000 Touring Case .....	158
Lid Set DS3000 .....	159
Dual 2500 Touring Case .....	160
Lid Set 2500 .....	161
Dual 1200 Touring Case .....	162
Lid Set 1200 .....	163
Dual 700 Touring Case .....	164
Lid Set 700 .....	165
Dual 575 Touring Case .....	166
Lid Set 575 .....	167
Dual 575 Road Case .....	168
Dual 250 Road Case .....	169
Quad 170 Touring Case .....	170
Single REDWash/Flash 3•192 Touring Case .....	171
Dual REDWash/Flash 3•192 Touring Case .....	172
Lid Set REDWash/Flash 3•192 .....	173
Quad REDWash 2•36 Touring Case .....	174
Quad REDBlinder 2•48 Touring Case .....	175
LightDome 1200 .....	176
LightDome 575 .....	178
WeatherShield 1200 .....	180
WeatherShield 575 .....	181



## Single DS7000 Touring Case



This robust Touring Case is designed for the safe transportation of the Robe DigitalSpot 7000 DT. It is constructed from high-quality, water repellent 13mm thick plywood. It features strong metal handles, hardwearing butterfly style latches and heavy duty wheels mounted on the reinforced base for easy transport. It has a black finish exterior and features aluminium protected edges and tough steel corners.

- **Exterior dimensions**

- 1130 x 760 x 600 mm (44.5" x 29.9" x 23.6")

## Single DS3000 Touring Case



This case provides perfect protection for Robe's DigitalSpot 3000 DT in the touring and rental market. It is constructed from high-quality, water repellent 13mm thick plywood. It has a black finish exterior and features aluminium protected edges and tough steel corners. This single case is equipped with four metal recessed wheels for easy transport.

- **Exterior dimensions**

- 870 x 705 x 600 mm (34.3" x 27.8" x 23.6")



## Dual DS3000 Touring Case



This Dual Touring Case provides full protection for two Robe digital moving lights - the DigitalSpot 3000 DTs. It was built to endure the rigors of the touring and rental market. The case is manufactured from high-quality, water repellent 13mm thick plywood. The features include durable construction, consisting of ball corners, strong metal handles and roller castors on the base to enable easy roll-on and roll-out.

- **Exterior dimensions**

- 1190 x 870 x 600 mm (46.9" x 34.3" x 23.6")

## Lid Set DS3000



The Lid Set DS3000 allows you to separate a double case into two single cases. It is manufactured from high-quality, water repellent 13 mm thick plywood. It has a black finish exterior and features aluminium protected edges and tough steel corners.

- **Exterior dimensions**

- 725 x 600 x 270 mm (28.5" x 23.6" x 10.6")





## Dual 2500 Touring Case



The Dual 2500 Touring Case provides full protection for the moving head of Robe's 2500 AT series during transportation. It was designed to endure the rigors of the touring and rental market. The case is manufactured from high-quality, water repellent 13mm thick plywood. It has a black finished exterior and features aluminium protected edges and tough steel corners. Roller castors enable easy transportation.

- **Exterior dimensions**

- 1210 x 1050 x 600 mm (47.6" x 41.3" x 23.6")

## Lid Set 2500



The Lid Set 2500 is manufactured from high-quality, water repellent 13mm thick plywood. It has a black finished exterior and features aluminium protected edges and tough steel corners. It is very easy to separate the double case into two single cases with the Lid Set 2500.

- **Exterior dimensions**

- 980 x 600 x 250 mm (38.6" x 23.6" x 9.8")



## Dual 1200 Touring Case



The Dual 1200 Touring Case is perfect for transporting the moving heads of the Robe 1200 series. Features include four heavy duty wheels for easy transportation, aluminium edge protection and tough steel corners. This case is constructed from high-quality, water repellent 13mm thick plywood. It has a black finish exterior.

- **Exterior dimensions**

- 1210 x 600 x 1050 mm (47.6" x 23.6" x 41.3")

## Lid Set 1200



The Lid Set 1200 allows you to separate a double 1200 Touring case into two single cases. It is constructed from high-quality, water repellent 13mm thick plywood. It has a black finish exterior and features aluminium protected edges and tough steel corners.

- **Exterior dimensions**

- 895 x 600 x 250 mm (35.2" x 23.6" x 9.8")



## Dual 700 Touring Case



This case has been designed to accommodate two 700 sized moving lights. It offers full protection to the lights during transportation. This robust Touring Case features four heavy duty wheels for easy transportation, reinforced carry handles, hardwearing butterfly style latches, tough steel corners and aluminium edge protection. It is manufactured from high-quality, water repellent 13mm thick plywood. It has a black finish exterior.

- **Exterior dimensions**

- 1200 x 970 x 600 mm (47.2" x 38.2" x 23.6")

## Lid Set 700



The Lid Set 700 is constructed from high-quality, water repellent 13mm thick plywood. It features aluminium edge protection and tough steel corners. It has a black finish exterior. The Lid Set allows you to separate a double case into two single cases.

- **Exterior dimensions**

- 850 x 600 x 250 mm (33.5" x 23.6" x 9.8")



## Dual 575 Touring Case



The Dual 575 Touring Case provides full protection for the moving heads in the 575 series during transportation and touring. It was designed to endure the rigors of the touring and rental market. The case is manufactured from high-quality, water repellent 13mm thick plywood. It has a black finished exterior and features aluminium protected edges and tough steel corners. Roller castors on the base enable easy roll-on and roll-out.

- **Exterior dimensions**

- 1075 x 890 x 600 mm (42.3" x 35.0" x 23.6")

## Lid Set 575



The Lid Set 575 for the Dual 575 Touring case enables the separation of the case into two single units. It is manufactured from high-quality, water repellent 13mm thick plywood and features aluminium edge protection and tough steel corners. It has a black finish exterior.

- **Exterior dimensions**

- 735 x 600 x 250 mm (28.9" x 23.6" x 9.8")



## Dual 575 Road Case



This case has been designed to accommodate two 575 sized moving lights. The case is completely carpeted and foam lined. This robust Road case features reinforced carrying handles, four heavy duty wheels mounted on the reinforced base for easy transport and hardwearing butterfly style latches. Inside there is a separate compartment for storing the mounting brackets. The Dual 575 Road Case is manufactured from high-quality, water repellent 9mm thick plywood. The exterior is covered in a black finish with aluminium edge protection and tough steel corners.

- **Exterior dimensions**

- 1075 x 845 x 570 mm (42.3" x 33.3" x 22.4")

## Dual 250 Road Case



The Dual 250 Road Case is perfect for transporting moving heads of the 250 series. It has a capacity of 2 units and was built to endure the rigors of the touring and rental market. The case is manufactured from high-quality, water repellent 9 mm thick plywood. Features include four heavy duty wheels mounted on the reinforced base for easy transport, reinforced carrying handles at all four sides, recessed wheel wells on the lid and hardwearing butterfly style latches. Inside is a separate compartment for storing the mounting brackets. The exterior is covered in black finish with aluminium edge protection and tough steel corners.

- **Exterior dimensions**

- 989 x 760 x 560 mm (38.9" x 29.9" x 22.1")



## Quad 170 Touring Case



The Quad 170 Touring Case was designed to accommodate four 170 sized moving yokes. This case offers complete protection for the units during transportation. It is manufactured from water repellent 9mm thick plywood and the exterior is covered in a black finish with aluminium edge protection and tough steel corners.

- **Exterior dimensions**

- 1075 x 845 x 570 mm (42.3" x 33.3" x 22.4")

## Single REDWash/Flash 3•192 Touring Case



Perfectly designed to house the REDWash/Flash 3•192, this quality touring case provides full protection to these lights during transportation. It is constructed from high-quality, water repellent 13mm thick plywood. It has a black finish exterior and features aluminium protected edges and tough steel corners. This case is easily manoeuvred via the four heavy duty wheels mounted on the reinforced base.

- **Exterior dimensions**

- 870 x 705 x 600 mm (34.3" x 27.8" x 23.6")



## Dual REDWash/Flash 3•192 Touring Case



Designed to house two Robe REDWash/Flash 3•192 fixtures, this quality case is made from high-quality, water repellent 13mm thick plywood. Features include four heavy duty wheels for easy transport, reinforced carry handles on all four sides, butterfly style latches, steel ball corners and aluminium edge protection. Its exterior is covered with a black finish.

- **Exterior dimensions**

- 1190 x 870 x 600 mm (46.9" x 34.3" x 23.6")

## Lid Set REDWash/Flash 3•192



The Lid Set for REDWash/Flash 3•192 was designed to separate double cases into two single cases. It is constructed from high-quality, water repellent 13mm thick plywood with exterior covered in black finish. It has a black finished exterior and features aluminium protected edges and tough steel corners.

- **Exterior dimensions**

- 725 x 600 x 270 mm (28.5" x 23.6" x 10.6")



## Quad REDWash 2•36 Touring Case



This case is designed to suit for four REDWash 2•36 moving lights. It provides full protection of the moving heads during touring and transportation. Features include aluminium edge protection and tough steel corners. It is equipped with roller castors on the base to enable easy roll-on and roll-out. This case is built from high-quality water repellent 9mm thick plywood and the exterior is covered in a black finish.

- **Exterior dimensions**

- 930 x 800 x 655 mm (36.3" x 31.5" x 25.8")

## Quad REDBlinder 2•48 Touring Case



This robust case provides perfect protection for the transportation of four Robe REDBlinder 2•48s. It is manufactured from high-quality 9mm thick plywood. The exterior is covered in a black finish with aluminium edge protection and tough steel corners. The case is easily transported via the heavy duty wheels mounted to the base. Four reinforced handles are fitted along with high quality catches.

- **Exterior dimensions**

- 1175 x 730 x 590 mm (46.3" x 28.7" x 23.2")





# LightDome 1200



The Robe LightDome 1200 enables Robe 700/1200 AT Series fixtures to be used in outdoors installations in any type of weather. It is made from special transparent non-flammable PVC-P film, with an IP 43 protection factor. All the effects of the Robe fixture inside can be used as normal. Back-UPS holds the dome inflated for 8 minutes. It is to protect the plastic dome falling on the hot fixture.

- **Power supply**

- 90-125V/47-63Hz or 180-250V/47-63Hz

- **Power consumption**

- 125VA

- **Dimensions**

- Base diameter: 800 mm (31.5")
- Base height: 180 mm (7.0")
- Dome height: 1690 mm (66.5")
- Total height: 1796 mm (70.7")
- Total weight: 20 kg (44.1 lbs)

- **Construction**

- Base: 3 mm aluminium
- Base finish: Black
- Dome: Transparent non-flammable PVC-P film, thickness 0.2 mm
- Protection factor: IP 43 (with PVC Dome)

- **Environmental**

- Maximum ambient temperature: 30°C (86°F)
- Maximum wind speed: 17 m/s



# LightDome 575



The smaller LightDome 575 offers protection against rain, snow and dirt for Robe fixtures with the 250AT/575AT base. The LightDome can either be directly floor-mounted or can be hung upside down on a truss system using Omega holders.

- **Power supply**

- 90-125V/47-63Hz or 180-250V/47-63Hz

- **Power consumption**

- 125VA

- **Dimensions**

- Base diameter: 630 mm (24.8")
- Base height: 180 mm (7.0")
- Dome height: 1290 mm (50.8")
- Total height: 1380 mm (54.3")
- Total weight: 17.5 kg (38.6 lbs)

- **Construction**

- Base: 3 mm aluminium
- Base finish: Black
- Dome: Transparent non-flammable PVC-P film, thickness 0.2 mm
- Protection factor: IP 43 (with PVC Dome)

- **Environmental**

- Maximum ambient temperature: 30°C (86°F)
- Maximum wind speed: 17 m/s



## WeatherShield 1200



The WeatherShield 1200 is made from Flame-retardant ABS and fits perfectly into the 1200AT Series base. It is designed with slots for Omega holders and equipped with rubber shutters for perfect protection against the rain.

- **Construction**

- Flame-retardant ABS

- **Thermal**

- Maximum ambient temperature: 30°C (86°F)

- **Dimensions**

- Height: 170 mm (6.7")
- Width: 740 mm (29.1")
- Depth: 690 mm (27.2")
- Weight: 2.5 kg (5.5 lbs)

## WeatherShield 575



The smaller version of Robe's WeatherShield is designed specially for the 575/700 AT Series base. An ideal instrument for outdoor installations and other weather-conscious environments.

- **Construction**

- Flame-retardant ABS

- **Thermal**

- Maximum ambient temperature: 30°C (86°F)

- **Dimensions**

- Height: 150 mm (5.9")
- Width: 615 mm (24.2")
- Depth: 615 mm (24.2")
- Weight: 2.1 kg (4.6 lbs)



## ACCESSORIES

Remote Control IR .....	184
Objective 12° .....	184
Objective 12° SCN .....	184
Barn-doors (black) .....	184
Barn-doors (black) .....	185
Module of Front wide-angle lens D200 .....	185
Module of lens D200 PC .....	185
Module of wide-angle lens D114 .....	185
Wide-angle lens .....	186
Set Glass frost .....	186
Set Film frost .....	186
Frost module .....	186
Lens-module 18° .....	187
Slot&Lock Gobo Holder 37.5 mm .....	187
Slot&Lock Gobo Holder 37.5 mm with magnet .....	187
Slot&Lock Gobo Holder 27 mm .....	187
Slot&Lock Gobo Holder 27 mm with magnet .....	188
Slot&Lock Gobo Holder 27 mm .....	188
Slot&Lock Gobo Holder 27 mm with magnet .....	188
Slot&Lock Gobo Holder 28 mm .....	188
Slot&Lock Gobo Holder 28 mm with magnet .....	189
Slot&Lock Gobo Holder 28 mm .....	189
Slot&Lock Gobo Holder 28 mm with magnet .....	189
Slot&Lock Effect Gobo Holder 47 mm with magnet .....	189
Slot&Lock Effect Gobo Holder 47 mm .....	190
Mounting plate .....	190
Mounting plate CT .....	190
Removable stand .....	190
Mounting bracket Omega DZ – small 2 pcs .....	191
Mounting bracket Omega CL – regular 2 pcs .....	191
Top Hat 3-ring 45 .....	191
Top Hat 3-ring 70 .....	191
Top Hat Long 70 .....	192
Top Hat Standard 45 .....	192
Optional 45° beam angle module .....	192
Optional 45° x 15° beam angle module .....	192



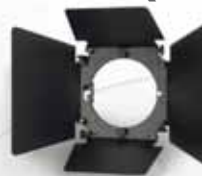
## Remote Control IR



Allows remote controlling of the fixture.

- **Suitable for**  
ColorSpot 1200AT, ColorSpot 1200E AT, ColorSpot 700E AT,  
ColorSpot 2500E AT, ColorWash 1200E AT, ColorWash 700E AT,  
ColorWash 750AT Tungsten, ColorSpot 575E AT, ColorWash 575E AT,  
ColorWash 2500E AT

## Barn-doors (black)



Facilitates shaping the beam of light.

- **Suitable for**  
ColorMix 240AT

## Objective 12°



Changes beam angle to 12°.

- **Suitable for**  
ColorSpot 250AT, ClubSpot 250CT, ClubSpot 300CT

## Module of Front wide-angle lens D200



Widens beam angles to 87°.

- **Suitable for**  
ColorWash 2500E AT, ColorWash 1200E AT, ColorWash 1200 AT,  
ColorWash 700E AT, ColorWash 750AT Tungsten, ColorWash 575AT,  
ColorWash 575E AT, ColorWash 575AT Zoom, ColorWash 575E AT Zoom

## Objective 12° SCN



Changes beam angle to 12°.

- **Suitable for**  
Scan 250XT, Scan 575XT

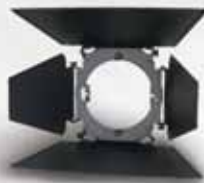
## Module of lens D200 PC



Focuses light beam.

- **Suitable for**  
ColorWash 2500E AT, ColorWash 1200E AT

## Barn-doors (black)



Facilitates shaping the beam of light.

- **Suitable for**  
ColorMix 575AT

## Module of wide-angle lens D114



Widens beam angle to 24° - 60°.

- **Suitable for**  
ColorWash 575AT, ColorWash 575E AT



## Wide-angle lens



Changes beam angle to 87°.

- **Suitable for**  
ColorMix 575AT

## Lens-module 18°



Changes beam angle to 18°.

- **Suitable for**  
ColorSpot 250AT, ClubSpot 250CT, ClubSpot 300CT, Scan 250XT

## Set glass frost



Soft frost light filter.

- **Suitable for**  
REDBlinder 2•48, REDBlinder 2•96

## Slot&Lock Gobo Holder 37.5 mm



Holds the gobos on a gobo wheel.

- **Suitable for**  
ColorSpot 1200AT, ColorSpot 1200E AT, ColorSpot 2500E AT

## Set film frost



Dense frost light filter.

- **Suitable for**  
REDBlinder 2•48, REDBlinder 2•96

## Slot&Lock Gobo Holder 37.5 mm with magnet



Holds the gobos on a gobo wheel.

- **Suitable for**  
ColorSpot 1200AT, ColorSpot 1200E AT, ColorSpot 2500E AT

## Frost module



Diffuser of light output changes the beam angle to 34°/42°/50° from standard 15°/18°/22°.

- **Suitable for**  
ColorSpot 575AT, ColorSpot 575E AT

## Slot&Lock Gobo Holder 27 mm



Holds the gobos on a gobo wheel.

- **Suitable for**  
ColorSpot 575AT, ColorSpot 575E AT



## Slot&Lock Gobo Holder 27 mm with magnet



Holds the gobos on a gobo wheel.

- **Suitable for**  
ColorSpot 575AT, ColorSpot 575E AT

## Slot&Lock Gobo Holder 28 mm with magnet



Holds the gobos on a gobo wheel.

- **Suitable for**  
ColorSpot 575AT, ColorSpot 575E AT

## Slot&Lock Gobo Holder 27 mm



Holds the gobos on a gobo wheel.

- **Suitable for**  
ColorSpot 170AT, ColorSpot 250AT

## Slot&Lock Gobo Holder 28 mm



Holds the gobos on a gobo wheel.

- **Suitable for**  
ColorSpot 250AT, ColorSpot 170AT

## Slot&Lock Gobo Holder 27 mm with magnet



Holds the gobos on a gobo wheel.

- **Suitable for**  
ColorSpot 170AT, ColorSpot 250AT

## Slot&Lock Gobo Holder 28 mm with magnet



Holds the gobos on a gobo wheel.

- **Suitable for**  
ColorSpot 250AT, ColorSpot 170AT

## Slot&Lock Gobo Holder 28 mm



Holds the gobos on a gobo wheel.

- **Suitable for**  
ColorSpot 575AT, ColorSpot 575E AT

## Slot&Lock Effect Gobo Holder 47 mm with magnet



Holds the effect glasses on a effect wheel.

- **Suitable for**  
ColorSpot 1200 AT, ColorSpot 1200E AT, ColorSpot 2500E AT



## Slot&Lock Effect Gobo Holder 47 mm



Holds the effect glasses on a effect wheel.

- **Suitable for**  
ColorSpot 1200 AT, ColorSpot 1200E AT,  
ColorSpot 2500E AT

## Mounting bracket Omega DZ - small 2 pcs



For fixing the unit on a truss.

- **Suitable for**  
ClubSpot 150CT, ClubSpot 160CT, ColorSpot 170AT,  
REDWash 2\*36

## Mounting plate



For fixing the unit on a truss.

- **Suitable for**  
ClubWash 250CT, ClubWash 300CT, ClubSpot 250CT, ClubSpot 300CT

## Mounting bracket Omega CL - regular 2 pcs



For fixing the unit on a truss.

- **Suitable for**  
Moving heads of all AT/CT series, except ClubSpot 150CT,  
ClubSpot 160CT, ColorSpot 170AT, REDWash 2\*36

## Mounting plate CT



For fixing the unit to the ceiling or wall.

- **Suitable for**  
ClubScan 150CT, ClubScan 250CT, ClubRoller 150CT, ClubRoller 250CT

## Top Hat 3-ring 45



Reducing passive  
light of fixture.

- **Suitable for**  
ColorWash 2500E AT, ColorWash 1200E AT  
ColorWash 700E AT, ColorWash 750E AT Tungsten, ColorWash 575E AT,  
ColorWash 575AT, ColorWash 575E AT Zoom, ColorWash 575AT Zoom

## Removable stand



To prop the unit up on a flat surface.

- **Suitable for**  
ColorMix 240AT

## Top Hat 3-ring 70



Reducing passive  
light of fixture.

- **Suitable for**  
ColorWash 2500E AT, ColorWash 1200E AT  
ColorWash 700E AT, ColorWash 750E AT Tungsten,  
ColorWash 575E AT, ColorWash 575AT,  
ColorWash 575E AT Zoom, ColorWash 575AT Zoom





## Top Hat Long 70



Reducing passive light of fixture.

- **Suitable for**  
ColorWash 2500E AT, ColorWash 1200E AT, ColorWash 700E AT,  
ColorWash 750E AT Tungsten, ColorWash 575E AT, ColorWash 575AT,  
ColorWash 575E AT Zoom, ColorWash 575AT Zoom

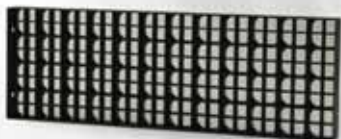
## Top Hat Standard 45



Reducing passive light of fixture.

- **Suitable for**  
ColorWash 2500E AT, ColorWash 1200E AT, ColorWash 700E AT,  
ColorWash 750E AT Tungsten, ColorWash 575E AT, ColorWash 575AT,  
ColorWash 575E AT Zoom, ColorWash 575AT Zoom

## Optional 45° beam angle module



Changes beam angle to 45°.

- **Suitable for**  
REDWash 3\*192, REDMix 3\*192

## Optional 45° x 15° beam angle module



Changes beam angle to 45° x 15°.

- **Suitable for**  
REDWash 3\*192, REDMix 3\*192



Lamp MSR Gold 1200 FastFit Philips .....	196	●
Lamp MSR 1200 SA Philips .....	196	●
Lamp Hi-Brite 750 FastFit Philips .....	196	●
Lamp MSR Gold 700 FastFit Philips .....	196	●
Lamp MSR 575W/2 Philips .....	197	●
Lamp HSR 575W/72 Osram .....	197	●
Lamp MSD 250W/2 Philips .....	197	●
Lamp HSD 250W/80 Osram .....	197	●
Lamp CDM-SA/T 150W/942 Philips .....	198	●
Lamp HSD 150/70 Osram .....	198	●
Lamp ELC/10H 24V/250W Philips .....	198	●
Lamp HMI 1200/GS Osram .....	198	●
Lamp HMI 575W/GS Osram .....	199	●



## Lamp MSR Gold 1200 FastFit Philips

- **Specifications**
  - Wattage [W]: 1400
  - Cap/base: PGJX 50
  - Lumen output [lm]: 95000
  - Color temperature [K]: 6300
  - Average lamp life [h]: 750



## Lamp MSR 575W/2 Philips

- **Specifications**
  - Wattage [W]: 575
  - Cap/base: GX9.5
  - Lumen output [lm]: 49000
  - Color temperature [K]: 7200
  - Average lamp life [h]: 1000



## Lamp MSR 1200 SA Philips

- **Specifications**
  - Wattage [W]: 1200
  - Cap/base: GY22
  - Lumen output [lm]: 96000
  - Color temperature [K]: 6000
  - Average lamp life [h]: 750



## Lamp HSR 575W/72 Osram

- **Specifications**
  - Wattage [W]: 575
  - Cap/base: GX9.5
  - Lumen output [lm]: 49000
  - Color temperature [K]: 7200
  - Average lamp life [h]: 1000



## Lamp Hi-Brite 750 FastFit Philips

- **Specifications**
  - Wattage [W]: 780
  - Cap/base: PGJX 50
  - Lumen output [lm]: 22500
  - Color temperature [K]: 3250
  - Average lamp life [h]: 300



## Lamp MSD 250W/2 Philips

- **Specifications**
  - Wattage [W]: 250
  - Cap/base: GY9.5
  - Lumen output [lm]: 18000
  - Color temperature [K]: 8500
  - Average lamp life [h]: 3000



## Lamp MSR Gold 700 FastFit Philips

- **Specifications**
  - Wattage [W]: 700
  - Cap/base: PGJX 50
  - Lumen output [lm]: 50000
  - Color temperature [K]: 6000
  - Average lamp life [h]: 750



## Lamp HSD 250W/80 Osram

- **Specifications**
  - Wattage [W]: 250
  - Cap/base: GY9.5
  - Lumen output [lm]: 17000
  - Color temperature [K]: 8000
  - Average lamp life [h]: 3000



## Lamp CDM-SA/T 150W/942 Philips



- **Specifications**
  - Wattage [W]: 150
  - Cap/base: G12
  - Lumen output [lm]: 14000
  - Color temperature [K]: 4200
  - Average lamp life [h]: 9000

## Lamp HMI 575W/GS Osram



- **Specifications**
  - Wattage [W]: 575
  - Cap/base: SFC10
  - Lumen output [lm]: 49000
  - Color temperature [K]: 6000
  - Average lamp life [h]: 1000

## Lamp HSD 150/70 Osram



- **Specifications**
  - Wattage [W]: 150
  - Cap/base: G12
  - Lumen output [lm]: 11000
  - Color temperature [K]: 7000
  - Average lamp life [h]: 3000

## Lamp ELC/10H 24V/250W Philips



- **Specifications**
  - Wattage [W]: 250
  - Cap/base: GX5.3
  - Lumen output [lm]: 14000
  - Color temperature [K]: 3400
  - Average lamp life [h]: 1000

## Lamp HMI 1200/GS Osram



- **Specifications**
  - Wattage [W]: 1200
  - Cap/base: SFC15.5
  - Lumen output [lm]: 110000
  - Color temperature [K]: 6000
  - Average lamp life [h]: 1000



**HEAD OFFICE & FACTORY:**

ROBE lighting s. r. o.  
 Rožnov p. R., Czech Republic  
 Tel.: +420 571 751 500  
 Fax: +420 571 626 337  
 E-mail: robe@robe.cz  
 www.robe.cz

**UK:**

ROBE UK Ltd.  
 Northampton, UK  
 Tel.: 01604 741000  
 Fax: 01604 741041  
 E-mail: info@robeuk.com  
 www.robeuk.com

**AMERICA:**

ROBE Lighting Inc.  
 Headquarters:  
 Sunrise, FL 33325  
 Tel.: +1 954 615 9100  
 Fax: +1 954 615 9105  
 E-mail: info@robelightning.com  
 www.robelightning.com

West Coast:  
 Sun Valley, CA 91352  
 Tel.: +1 818 771 1101  
 Fax: +1 818 771 1102  
 E-mail: info@robelightning.com  
 www.robelightning.com

**SOUTH-EAST ASIA:**

ROBE South-East Asia  
 Singapore  
 Tel.: +65-8118 6665  
 Fax: +65-6747 6432  
 E-mail: info@robe-sea.com  
 www.robe-sea.com

**MIDDLE EAST:**

ROBE Middle East  
 Beirut, Lebanon  
 Tel.: +961 3 36 36 88  
 Fax: +961 1 29 17 88  
 E-mail: info@robe.cz  
 www.robe.cz

## D I S T R I B U T O R S

**ROBE LIGHTING IS DISTRIBUTING  
 DIRECTLY ALL OVER THE WORLD THROUGH  
 THE STABLE NETWORK OF DISTRIBUTORS**

- Armenia • Australia • Austria
- Azerbaijan • Bahrain •
- Barbados • Belarus • Belgium •
- Bolivia • Bosnia & Hercegovina
- Brazil • Bulgaria • Canada •
- Chile • China • Croatia • Czech
- Republic • Cyprus • Denmark
- Ecuador • Egypt • Estonia
- Finland • France • Georgia •
- Germany • Greece • Guatemala
- Honduras • Hungary • Iceland
- India • Indonesia • Iran •
- Ireland • Israel • Italy • Japan
- Jordan • Kazakhstan • Korea
- Kuwait • Latvia • Lebanon
- Lithuania • Luxemburg •
- Macedonia • Malaysia •
- Maldives • Malta • Morocco
- Mauritius • Mexico • Moldova
- Netherlands • New Zeland
- Norway • Oman • Panama •
- Peru • Phillippines • Poland
- Portugal • Puerto Rico •
- Romania • Russia • Saudi Arabia
- Serbia & Monte Negro •
- Singapore • Slovakia
- Slovenia • South Africa •
- Spain • Sri Lanka
- Suriname • Sweden •
- Switzerland • Syria • Taiwan
- Thailand • Tunisia • Turkey
- Ukraine • U.A.E. • USA •
- United Kingdom • Uruguay
- Venezuela • Vietnam

## NOTES :

NOTES:

**ROBE.**







**ROBE**

[www.robe.cz](http://www.robe.cz)

ROBE lighting s. r. o. • Házovice 2090 • 756 61 Rožnov p. Radhoštěm • Czech Republic  
Tel.: +420 571 751 500 • Fax: +420 571 626 337 • E-mail: [robe@robe.cz](mailto:robe@robe.cz)

November 2008 © ROBE lighting s. r. o.