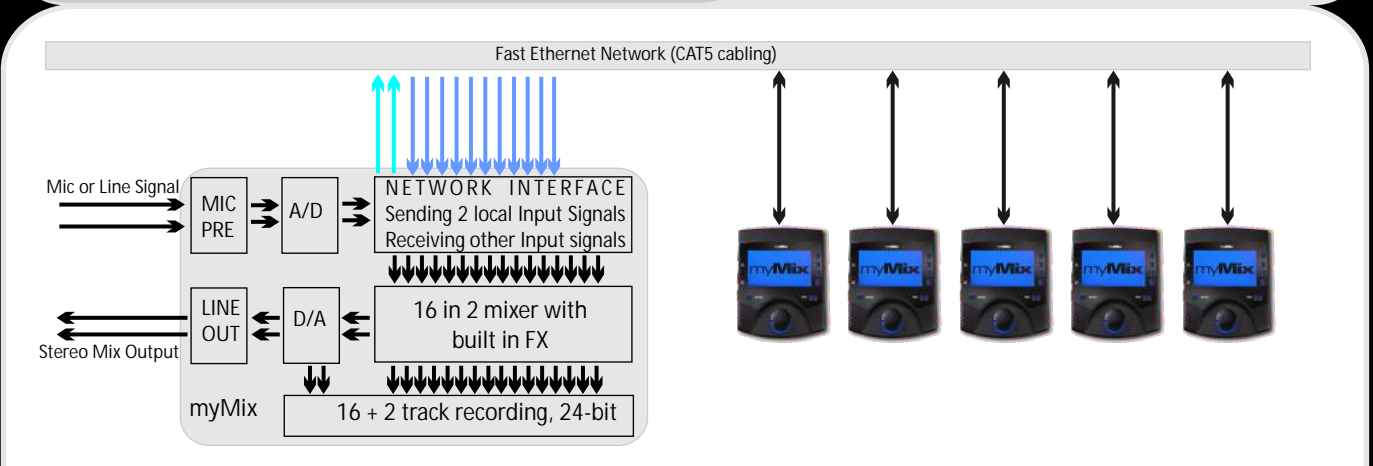
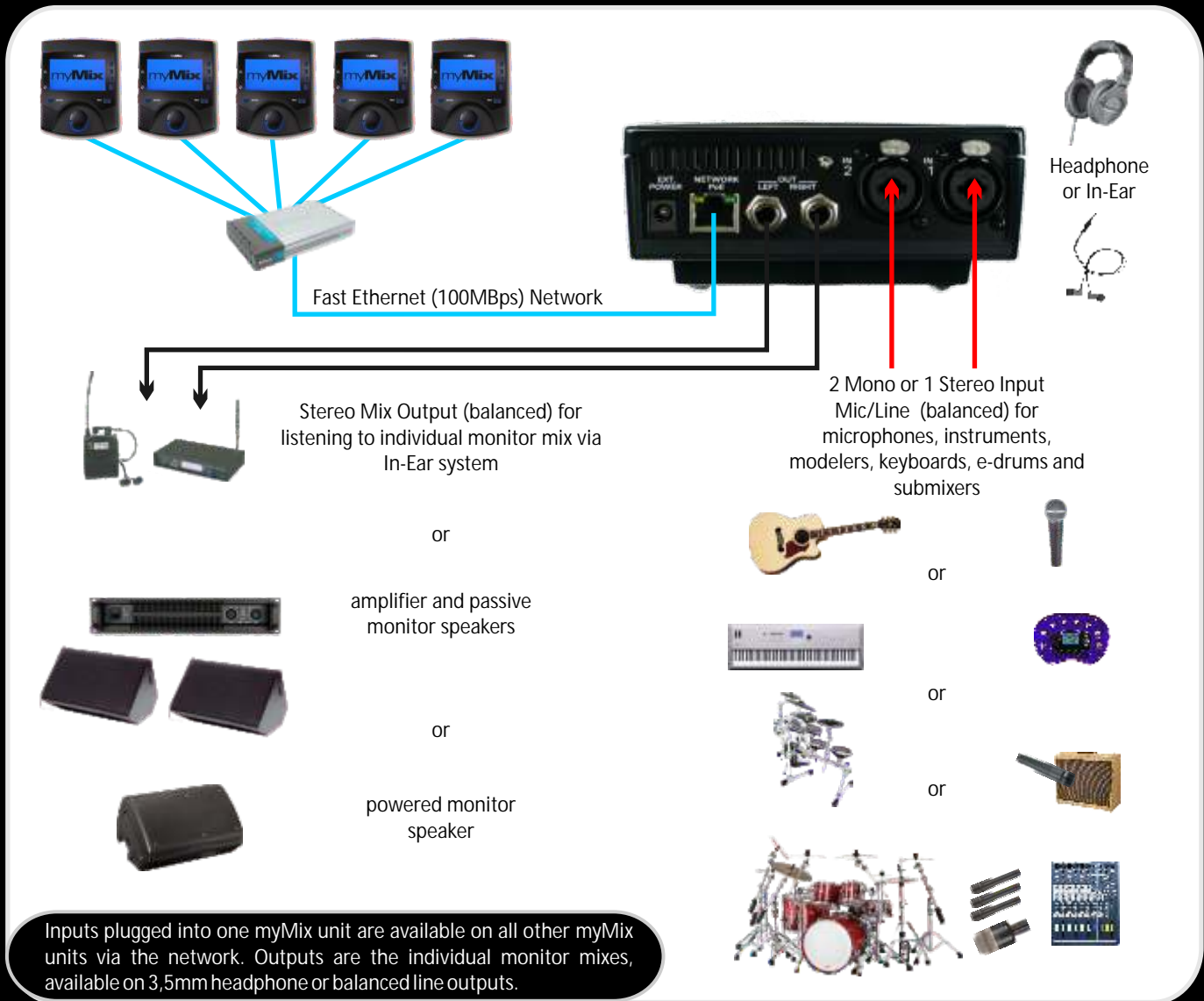


Typical input and output connections System Block Diagram



myMix Block Diagram - the two local input signals are converted and sent to the network, while the signals from the other myMix units are received from the network. Up to 16 signals can be recorded as multitrack plus the mixed stereo monitor signal.

Application Band Rehearsal

Selfcontained system for 5 musicians with individual mixes for up to 10 inputs



Joe- Guitar: uses a mic to pick up the guitar amplifier, the second input is for Nicks mic. The outputs are connected to a power amplifier to drive a pair of monitor speakers.



Nick- Keyboards and backing vocals. Keyboards connected to myMix (Stereo), vocal mic connected to free input on Joe's myMix. Nick listens through his wired in-ears.



Steve- Bass and backing vocals. Bass is connected direct from the amplifier line out to myMix. Steve uses headphones to listen.



Lisa- Lead Vocals. Connects her vocal mic to myMix, the second input is for Greg's click track. She is listening through wired in-ears.



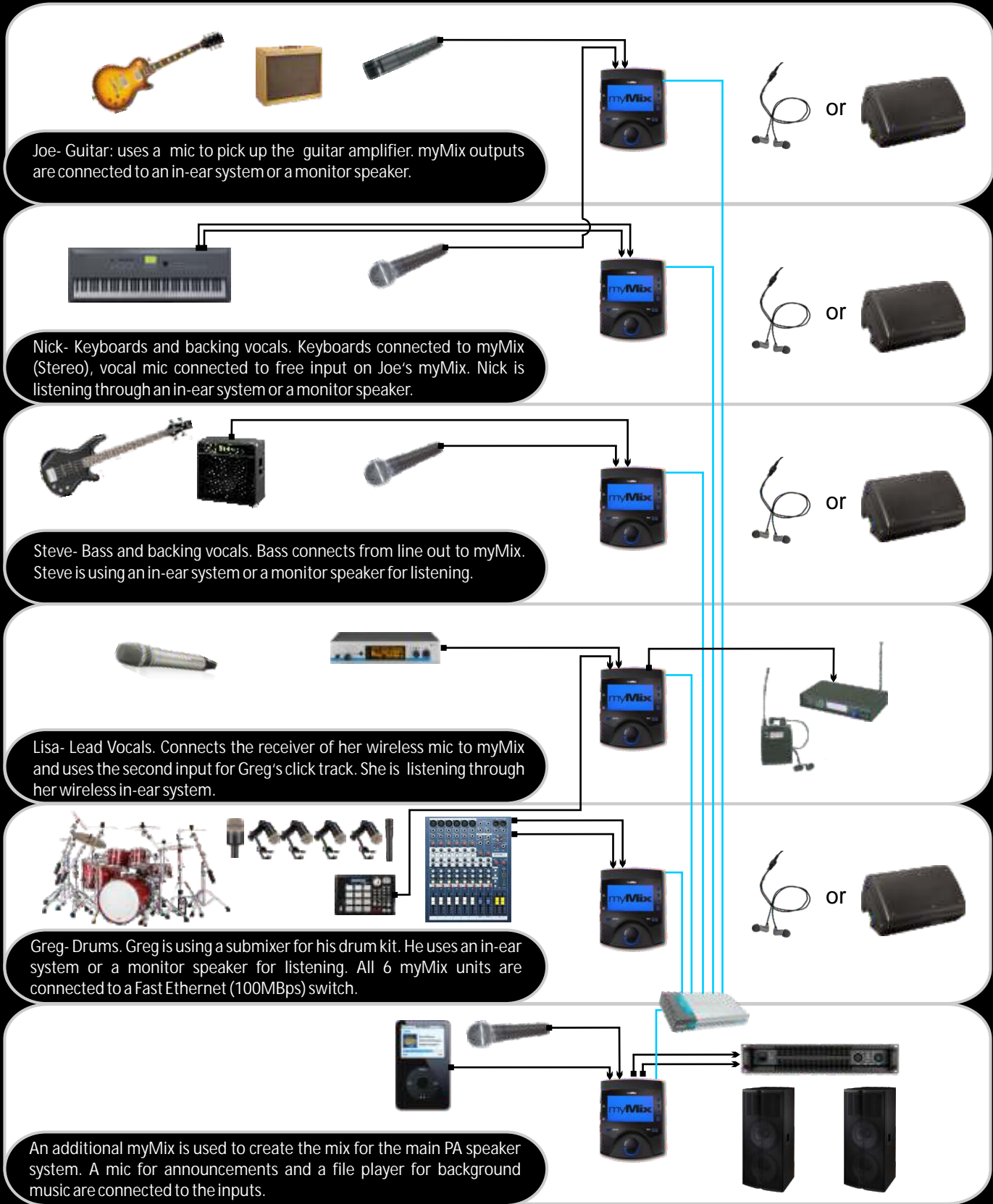
Greg- Drums. Greg is using one mic for kick drum and one overhead mic for snare, hihat and cymbals in the rehearsal room. He uses a headphone for listening.

Conventional Fast Ethernet (100MBps) switch with 5 ports to connect to all myMix units via a CAT5 cable.



Application Club Gig - stage mixing

Selfcontained system for 5 musicians with individual mixes plus main PA mix



Application Concert with FOH console

5 musicians with individual mixes

Drum submix at FOH console

