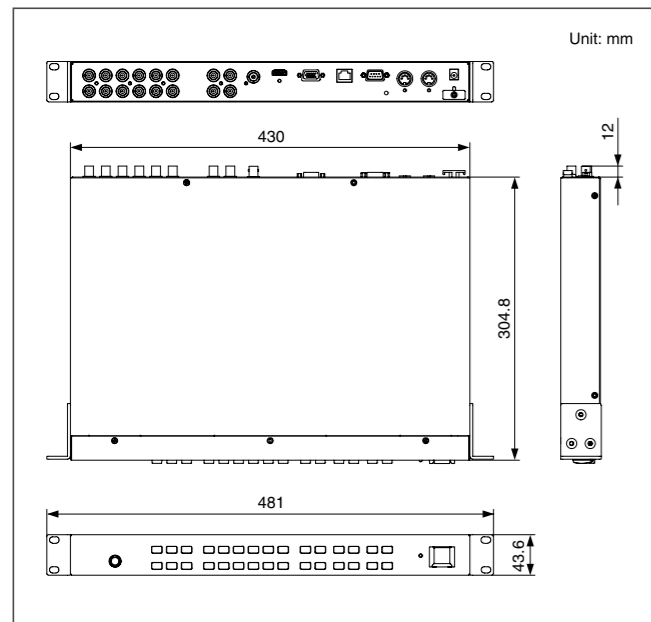


■ Specifications

Video Format	Composite: NTSC or PAL	Connectors	Output Connectors	HDMI (for MULTI-OUT, MENU) x 1 jack
	HDMI, PC-RGB: 1920 x 1080 (60 / 50 Hz), 1680 x 1050 (60 / 75 Hz), 1600 x 900 (60 / 75 Hz), 1440 x 900 (60 / 75 Hz), 1280 x 1024 (60 / 75 Hz), 1280 x 720 (60 / 50 Hz), 1024 x 768 (60 / 75 Hz) (Progressive Scan)		PC-RGB (for MULTI-OUT, MENU): D-Sub 15pin type x 1 jack	
Sampling Rate	4:2:2 (Y:B-Y:R-Y), 8-bit, 13.5 MHz (ITU-R BT.601)	Other Connectors	Ethernet 10 / 100Base-TX RJ45 type x 1 jack	
			RS-232C DB-9 type x 1 jack	
Input / Output Level and Impedance	Composite: 1.0 Vp-p, 75 ohms	Power Supply	MIDI IN 5-pin DIN type x 1 jack	
	PC-RGB: 0.7 Vp-p, 75 ohms (H, V : 5V TTL)		MIDI OUT / THRU 5-pin DIN type x 1 jack	
Connectors	Video Input	Current Draw	Mouse PS/2 type *Not bundled.	
	Output Connectors		AC Adaptor (Accessory)	2 A
	Composite (for MATRIX OUT): BNC type x 4 jacks	Dimensions		481 (430 without rack mount bracket) (W) x 320 (D) x 44 (H) mm, 19 (16-15/16 without rack mount bracket) (W) x 12-5/8 (D) x 1-3/4 (H) inches
	Composite (for MATRIX OUT Preview): BNC type x 1 jack		Weight	3.0 kg, 6 lbs 10 oz (without AC Adaptor)

[MONITOR] XGA (1024x768 pixels) or greater, HDMI or Analog RGB input is required.  
 [HDMI OUTPUT Connection] Audio is not supported. HDMI version is 1.2. Supports EDID when the setup is AUTO.  
 [RGB OUTPUT Connection] Manual pixel rate setup is needed.  
 [Aspect Ratio] In MULTI-OUT, display aspect and each input aspects can be adjusted individually. MATRIX OUTPUT has no aspect adjustment function.  
 [Switching] An mixed image before and after switching may appear on MATRIX Output at switching.

■ Dimensions



■ Video Mixers/Switchers

**Innovative 8-channel Video Mixer with DSK**

- 8 video inputs including 2 separate PC/RGB inputs
- Simple panel layout
- Downstream Keyer for seamless mixing under title/graphics

**LVS-800**  
Video Mix/Live Switcher **V-LINK**  
RGB COMPOSITE S-VIDEO



**Powerful Eight Input Video Mixer**

- 8 video inputs including built-in scan converter for RGB input
- Various video effects and transitions
- DV quality full digital processing

**V-8**  
8-Channel Video Mixer **V-LINK**  
RGB COMPOSITE S-VIDEO



**An All-in-One Multi-Format Live Video Switcher**

- Built-in monitor, scalars and Multi-format inputs and outputs
- DSK, Key Composition and PinP are controlled using simple operation.
- Various video equipments can be connected.

**V-1600HD**  
Multi-Format Video Switcher **V-LINK**  
HD-SDI SD-SDI DVI-D HDMI RGB  
COMPONENT COMPOSITE S-VIDEO STILL IMAGE



**MVS-12**  
MULTI-VIEWER/SWITCHER

**Ensuring high quality while protecting the environment: Roland is ISO9001 and ISO14001 certified**

At Roland, several group companies have obtained ISO9001 certification. In addition, in January 1999, Roland also received ISO14001 international environmental management system certification. We're actively seeking ways to maintain harmony with the environment. (ISO=International Standardization Organization: an organization for the promotion of standardization of international units and terms. They provide different categories of certification: ISO9001 Series certification is a product quality certification for products that undergo a certain level of quality control from the design stage to the after service stage; ISO14001 Series certification is for environment-related standards. Each member of the Roland Group is striving to obtain certification.)

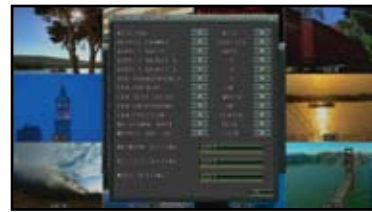
Multi-Viewer with Simple Matrix Switcher  
for Convenient Video Monitoring

# Easily monitor and distribute input sources. View all sources on a single HD display.

# MULTI-VIEWER/SWITCHER MVS-12

## INTUITIVE OPERATION

Quick setup and operation with a mouse. Rearrange screen structure with simple drag and drop motion. Select video source with a click of the mouse.



● Setup MENU also supports mouse operation.



## MATRIX SWITCHER

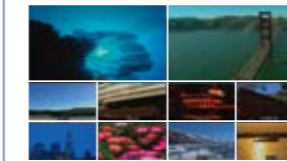
Using the built-in Matrix Switcher function, 12 video sources are assignable to 4 different outputs. Use as a simple switcher.



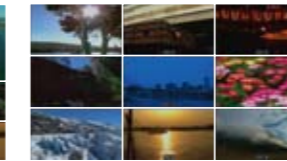
## MULTI-VIEW

There are four layout patterns to choose from. Aspect ratios, background color and source names can be selected from the MENU.

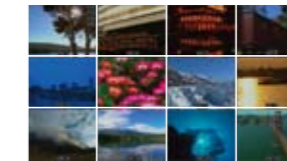
■ 10 Screen Layout



■ 9 Screen Layout



■ 12 Screen Layout



■ 4 Screen Layout



## MEMORY & CONTROL

Four display setups can be saved and recalled from the 4 front panel memory buttons. In addition, the MVS-12 can be controlled from a PC via LAN or RS-232C.

Multi-Viewer Display

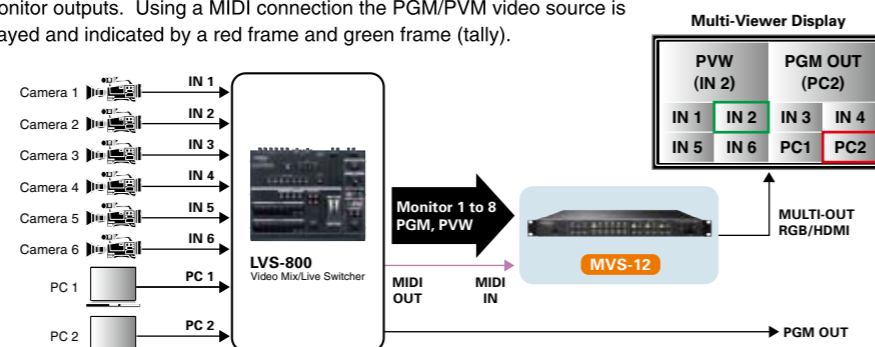


## MULTI-SOLUTIONS

Multi-viewer and Matrix switcher function enables system expansion.

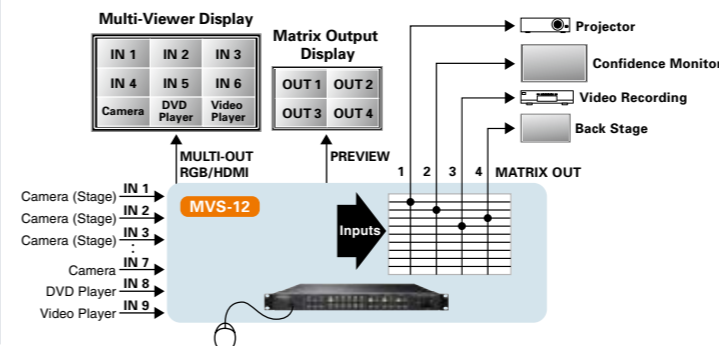
### Monitoring for Switcher

The MVS-12 is a perfect companion for the LVS-800 allowing you to preview all monitor outputs. Using a MIDI connection the PGM/PVM video source is displayed and indicated by a red frame and green frame (tally).



### Monitoring for Video Installation

Video sources can be distributed to up to four different locations.



### Expansion of SD Inputs

The Matrix Switcher function enables the V-1600HD mixer to access additional SD inputs. By connecting a MIDI cable and using the V-LINK function, the V-1600HD can directly select any video source from the MVS-12.

