



Image is everything

Inspiring LED Screenproducts for the 21th century and beyond...



By introducing the DMT Pixelstrip and Pixelbatten DMT introduces a new and revolutionary concept which makes pixel control easy and affordable.

DMT has been licensed to introduce the new protocol created by ArKaos Interactive Visual Technologies for controlling pixel driven fixtures: **Kling-Net**.

Kling-Net is a unique, stable and very user friendly protocol.

In the past it was necessary to use a lot of interfaces or expensive nodes, Kling-Net now only requires a simple CAT-5 cable.

There is no need for any interface or converter anymore, just plug and play.

That's Kling-Net, as simple as ABC, the new standard for pixel control.

The DMT PixelStrip and PixelBatten are the first introduced fixtures of a wide range of pixel driven fixtures which combine easy operation and affordable cost.



Step 1: Install DMT VisionExpress on your laptop or Mac book this will already include the Kling-Net protocol.

Step 2: Connect the Pixelstrips and Pixelbatten by a CAT-5 cable with your laptop or Mac book. Once you have connected the fixtures, the VisionExpress software immediately recognizes them.

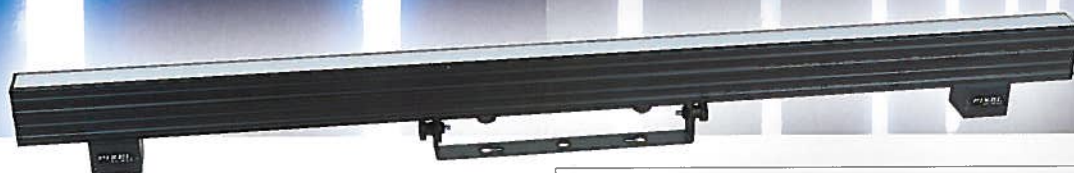
Step 3: Map the devices to the right position, a step which is very easy because you can actually drag and drop the fixtures in an on screen interface into the right position. This only requires a few minutes and you're ready to go.

DMT VisionExpress is developed by ArKaos and it includes all major functionalities to control your visuals. It also has DMX control which allows you to synchronize the visuals with your lightshow.

Be part of the future and join the Kling-Net family today!

Special features:

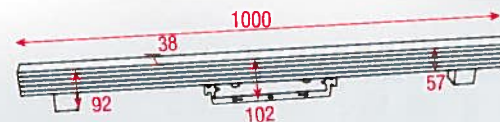
- Plug and Play
- Inexpensive
- Klingnet-protocol controlled
- Bright colors.

**Pixelstrip P25**

42270

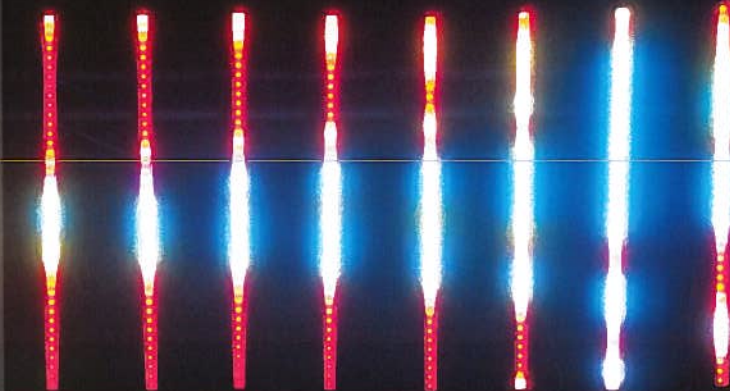
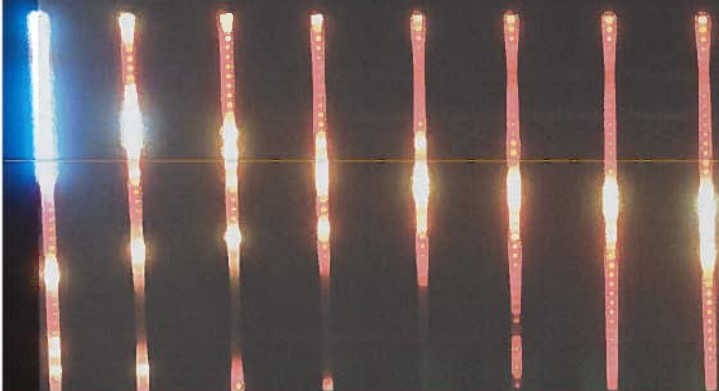
The DMT Pixelstrip is a strip with a length of 1m which contains 40 pixels with a pitch of 25mm. On the backside of the Pixelstrip there is M10 sliding-profile for easy and fast mounting of brackets and clamps. A wall bracket is standard in the package. The Pixelstrip P25 comes including an installed frost cover. A clear cover is enclosed in the packing offering optimum flexibility. By connecting the strips to your DMT VisionExpress software you can play any video or visual by your laptop or Macbook.

The DMT Pixelstrip is controlled by Klingnet which ensures fast setup, easy control and a affordable price. Klingnet is developed in collaboration with Arkaos, ensuring powerful tools and state-of-art functionalities in combination with easy set-up. Data in- and output connections are done by CAT-5. This CAT-5 cable holds both the data and power which is necessary to control the Pixelstrip P25. To control the Pixelstrip an optional PSU is necessary. One PSU can hold up to 16 Pixelstrips.



Pixelpitch:	25 mm
Pixelquantity:	40 pixels
Control:	Kling-Net
LED Lightsource:	RGB 5050SMD LED
Viewing angle:	120 degrees
Connection:	CAT-5
IP-Rating:	IP-23
Dimensions:	1000 x 35 x 105mm
Power supply:	24V DC (by dedicated PSU)
Weight:	2,5 kg
Luminance:	850 nits
Refreshrate:	400 Hz
Accessories included:	Mounting bracket, clear cover, manual.
Optional accessories:	PSU (42271), CAT-5 cables





Dataconnection:	CAT-5 2x CAT-5 Klingnet in and output 4x CAT-5 Power/Data output
IP-Rating:	IP-23
Power supply:	100-240V / 50-60Hz
Power consumption:	300W
Dimensions:	253 x 230 x 74mm
Weight:	3 kg
Accessories included:	Powercon input cable, Powercon linkcable



PSU for 4x4 pieces Pixelstrip P25

42271

The dedicated PSU for 16 Pixelstrips is necessary to give power to your Pixelstrips. Each PSU has a Klingnet in and output (CAT-5) and has 4 CAT-5 outputs to give power and data to your Pixelstrips. Every output is designed to give power to a maximum of 4 Pixelstrips. The PSU has a 90V-264V multi-voltage input and is equipped with Neutrik Powercon in- and outputs.

Special features:

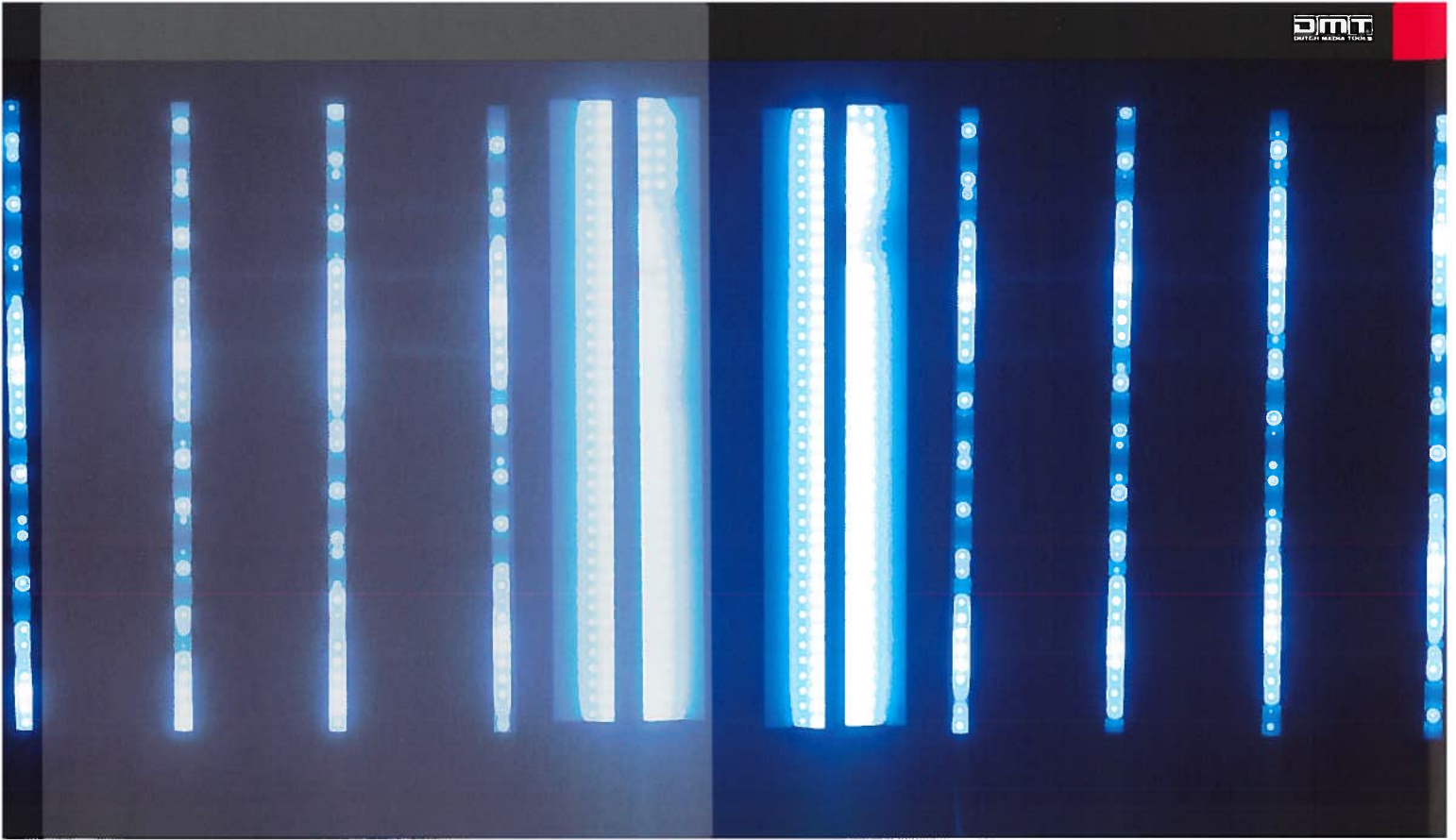
- Plug and Play
- Inexpensive
- Klingnet-protocol controlled
- Bright colors
- No PSU/ Junctionbox needed

Pixelbatten P25

42275

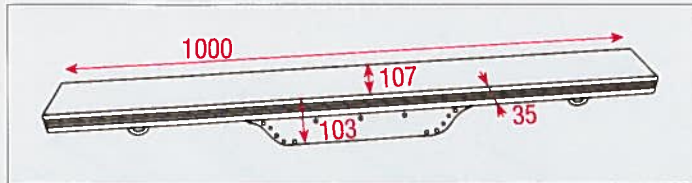
The DMT Pixelbatten has a length of 1m and contains 160 pixels with a pitch of 25mm. The pixels are mounted in a configuration of 40x4 pixels. It is Pixelbatten standard equipped with a frost front-cover and a clear front-cover is standard added to the packing for optimum flexibility. At the backside of the Pixelbatten P25 there are two sliding plates with a M10 nut. They either can adapt a standard pipe-clamp or a mounting-bracket. One mounting bracket is included in the package. The Data in- and output connections are CAT-5, and it has Neutrik powercon in- and output connections. By connecting the batten to your DMT VisionExpress software you can play any video or visual by your laptop or Macbook. The DMT Pixelbatten is controlled by Klingnet which ensures a fast setup, easy control and an affordable price. Klingnet is exclusively licensed to DMT by Arkaos, ensuring powerful tools and state-of-art functionalities.

Pixelpitch:	25 mm
Pixelquantity:	160 pixels
Control:	Kling-Net
LED Lightsource:	RGB 5050SMD LED
Viewing angle:	120 degrees
Connection:	CAT-5
Powerconnection:	Neutrik Powercon
Powerconsumption:	100W
IP-Rating:	IP-23
Dimensions:	1000 x 140 x 105mm
Power supply:	100-240V / 50-60Hz
Weight:	5,2 kg
Luminance:	850 nits
Refreshrate:	400 Hz
Accessories included:	Mounting bracket, clear cover, Powercon inputcable, Powercon linkcable, manual



Sliding mounting bracket

Powercon in-and output





Benefits at a Glance

- Plug and Play
- Easy setup
- No complicated software
- Cost effective
- Standard CAT cable
- Can work with 1G Ethernet switches

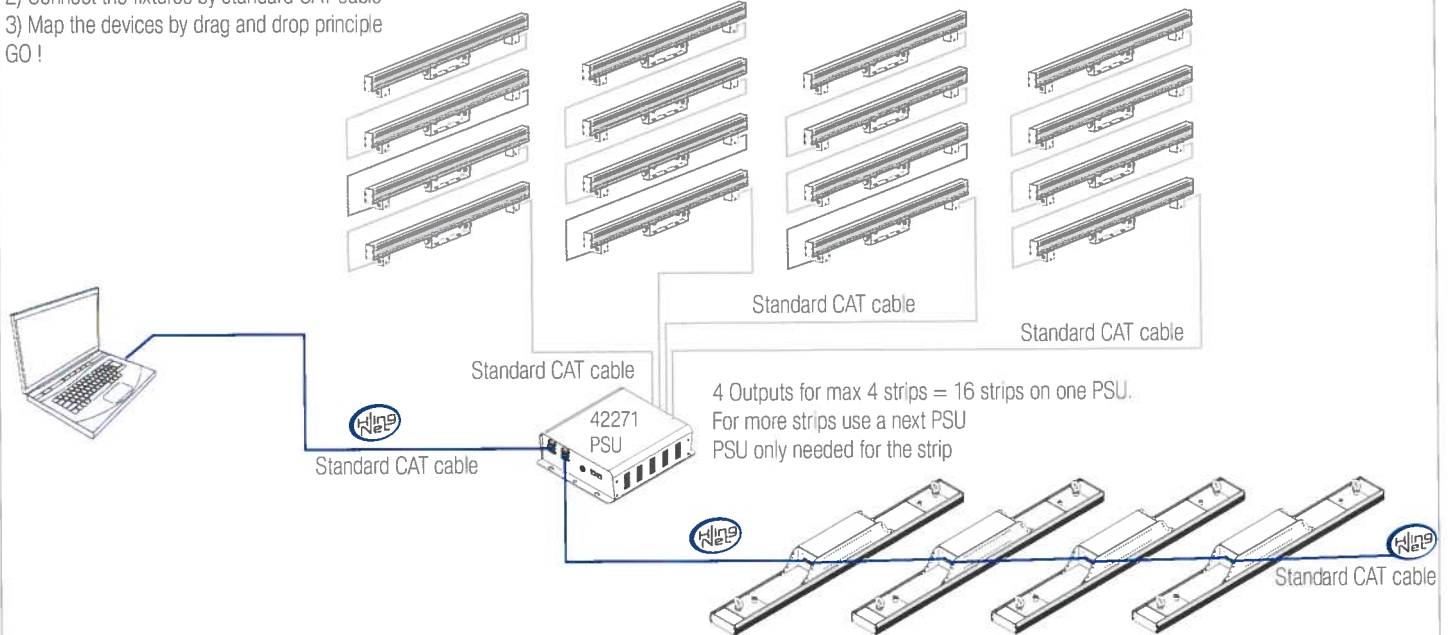


Pixelscreen P10 SMD Tour @ Within Temptation
Equipment by Purple Group Production, AI Productions BV

Only 3 steps

- 1) Install Software at your laptop or Macbook
 - 2) Connect the fixtures by standard CAT cable
 - 3) Map the devices by drag and drop principle
- GO !

42270 Pixelstrip P25
Max 4 pieces on each output





Pixelscreen P10 SMD Tour @ Within Temptation
Equipment by Purple Group Production, AT Productions BV



VisionExpress

DMT VisionExpress allows anyone anywhere to exploit the possibilities of a powerful media server. It combines ease of use and high performance for an affordable price, making it the perfect solution for quick media management

Multi-threaded Engine

Built on ArKaos' latest generation of technology, VisionExpress' multi-threaded engine delivers blistering performance, by taking advantage of multi-core machines.

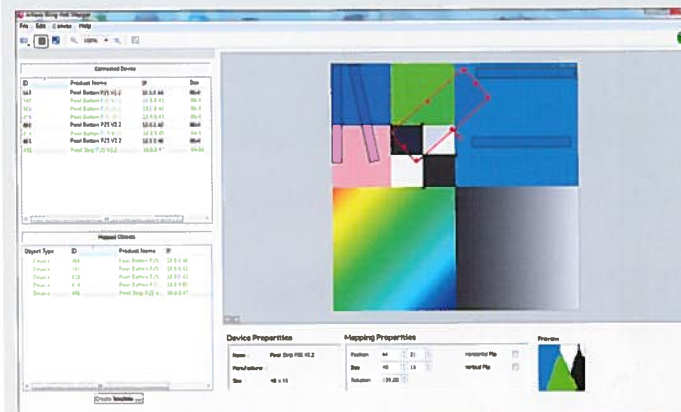
VisionExpress comes with improved frame blending support allowing extremely smooth video playback even at slow speeds and software genlock making it possible to play several HD movies at up to 60 fps without dropping a single frame.

Simple Mode

The simple mode interface of VisionExpress marks a new phase in software development allowing you to make use of the latest dynamic visual effects combined with an efficient and intuitive library management system and with simple front end control via DMX, MIDI or even a computer keyboard. VisionExpress' Simple Mode interface allows you to prepare your visual show in the software itself and then simply take control of your visual presets using a few channels on your lighting desk or notes on a MIDI controller.

Practical interface

A straightforward interface displaying all layer's parameters simultaneously, as well as all layers preview, gives lighting designers improved visibility of their shows and the best ergonomics possible, you can even generate a preview visual of your Soft Edge setup so you can't go wrong!



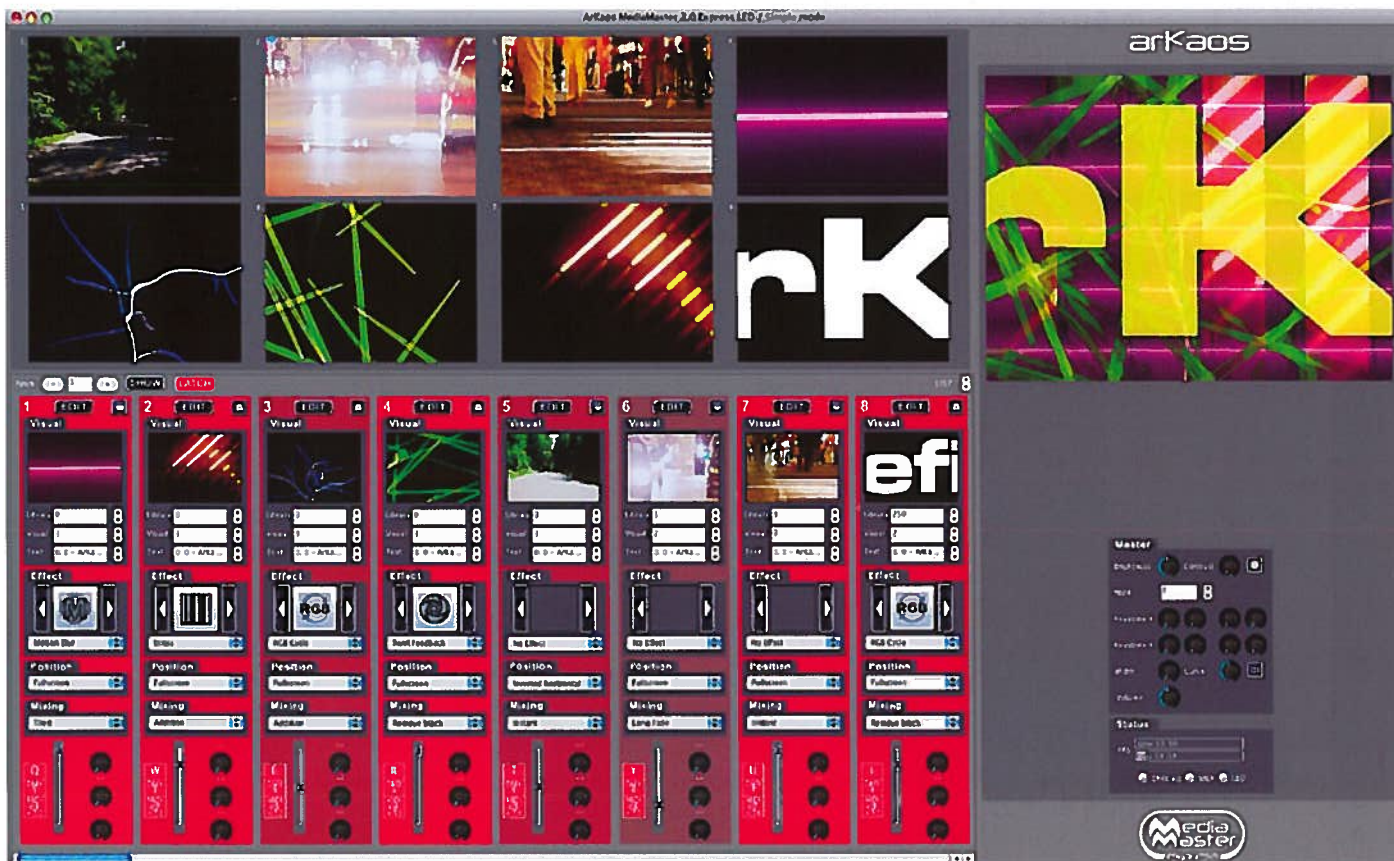
Never re-encode your media

All popular video file formats supported, and with VisionExpress' very efficient media management system, you can store up to 60,000 visuals in more than 200 folders, delete and move files at your convenience without having to re-stack a programmed show.

Mix audio from your video

MediaMaster can also play and mix the audio track from your movies. This feature, which comes with global audio volume control through DMX, turns any lighting desk into a professional A/V mixer.

clubs, live DJ performances and LED outputs. Infinite creative possibilities Video files are not interactive enough? Do you need more effects?



Audio Visualizers

Vision Express' audio visualizers are powerful visual animations that react to the audio input to create nice ambient visuals. Audio visualizers are perfect for VisionExpress supports Actionscript3 in Flash animations as well as Quartz Composer .qtz files as Sources and as Effects (Mac OS X only) so you can create your own unique interactive animations, music visualizers and effects.

Total control

Take total control of your media: position, scale, rotate, adjust transparency, alpha, colors, compose with other layers etc. Vision Express supports major media formats, multiple video inputs, and provides more than 60 effects with controllable parameters.

Guaranteed quality

VisionExpress' powerful video engine and integrated native decoders of MPEG 2/4, QuickTime photo JPEG and Adobe Flash (among other formats) guarantee a smooth and reliable playback of full HD media on all layers.

KlingNet Mapper compatibility

VisionExpress currently includes the intuitive KlingNet Mapper extension, the flexible software solution to drive Klingnet based LED panels directly over your CAT-5 without the need of any converters!

Need some footage?

The software installer that you can download from this web site already comes with some video loops to get you started.. Okay you need high quality? The boxed version comes shipped with an additional DVD-Rom containing 4.1 GB of exclusive video footage in High Definition and Standard Definition.

Special features:

Light:
Only 50% weight of traditional iron cabinets

Black:
Higher contrast rate by special designed shaders

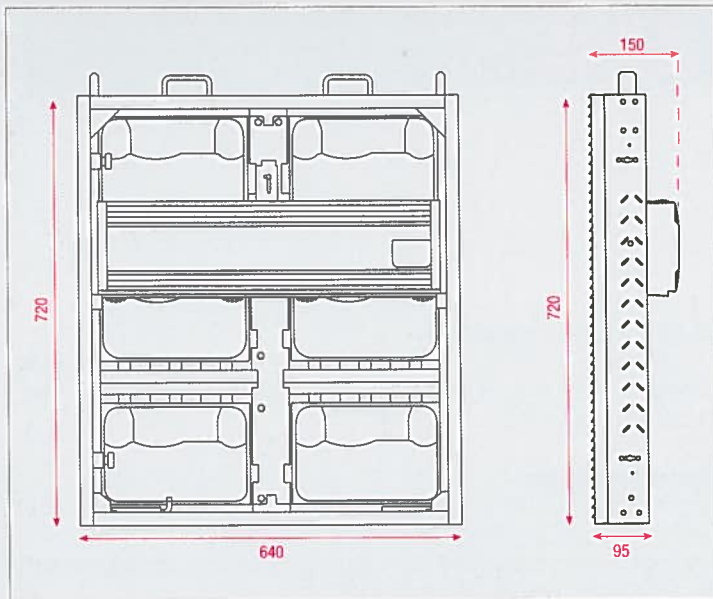
Fast:
Ergonomic rigging design, fast installation

Thin:
Only 90mm thickness around the panel and 150mm in the middle

Service:
Modular design and hot swappable components



Pixelscreen P10 SMD tour @ Within Temptation
Equipment by Purple Group Production/ AI Productions BV

**Hanging Bracket 1**

101441 for 1 piece Pixelscreen P10 Tour SMD

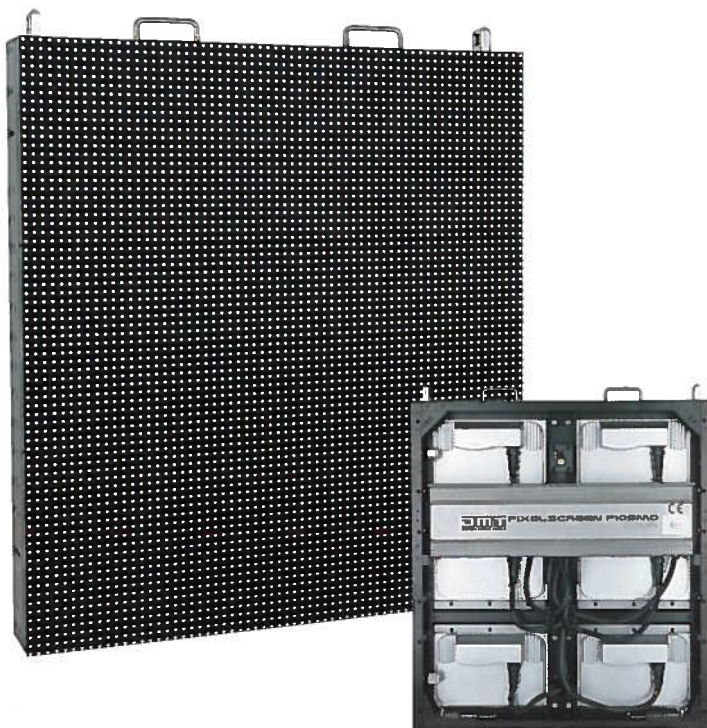
Maximum hanging height:
10 modules: 7,2 meter
(safety factor 1:10)

**Hanging Bracket 2**

101442 for 2 pieces Pixelscreen P10 Tour SMD

Maximum hanging height:
10 modules: 7,2 meter
(safety factor 1:10)





Pixelscreen P10 SMD Tour

101440

DMT has developed a Pixelscreen P10 SMD Tour which represents the new generation of indoor and outdoor LED screens for both rental and permanent installations. Excellent brightness, outstanding contrast, compatible size ratio and fashionable outlook are making it ideal for use demanding environment and applications.

The ergonomic and servicefriendly design with a sensational low weight of 18 kg for each panel improves set-up times of Pixelcreens. The modular structure allows a unique 'one-minute' maintenance in case of any problem.

The Pixelscreen P10 SMD Tour is one of the most silent LED screens on the market. Due to efficient design with optimal convection cooling it does not need any fans. This feature makes the Pixelscreen P10 SMD Tour very suitable for use in TV and Theatre applications where silence is demanded.

The Pixelscreen P10 SMD Tour is ready to go on the road with the available special designed flightcase. The flightcase can hold up to 6 modules and it's necessary cable. The cases are designed and constructed to withstand the most tough conditions on the road and they are designed to fit European Truck Measurements as they have a width of 60cm.

Flightcase for 6 panels Pixelscreen P10 SMD Tour

101445

Size: 138 x 60 x 98cm

Weight fully loaded: 176kg



Hot swappable PSU

Hot swappable LED modules

Easy connections



Power Supply:	AC110-230V / 50-60Hz
Max Power Consumption:	300W
Average Power Consumption:	100W
Module size:	320 x 240mm
Cabinet size:	640 x 720 x 90mm
Cabinet area:	0,46m ²
Cabinet weight:	18 kg
Pixel density:	10000 pixels/m ²
Viewing Angle Horizontal:	140 degrees
Viewing Angle Vertical:	100 degrees
Luminance:	5000 Nits
Refresh rate:	Variable <800Hz
Control system:	LED Studio
Pixels per screen:	64x 72
LED Lightsource:	SMD5050 RGB
IP Rating:	IP65
Data connection:	Neutrik Ethercon
Power connection:	Neutrik Powercon
Lifetime:	50.000 Hours
Cooling:	Convection cooling
Maximum hanging height:	10 modules (7,2 m)

Special features:

Waterproof:

Advanced waterproof design ensuring a reliable SMD outdoor screen with IP63 grade

Curve:

Panel with five angle options enables to build attractive and curved shaped screens

High brightness:

Up to 7000 nits with excellent color uniformity. Suitable for indoor and outdoor use

Easy Panel Replacement:

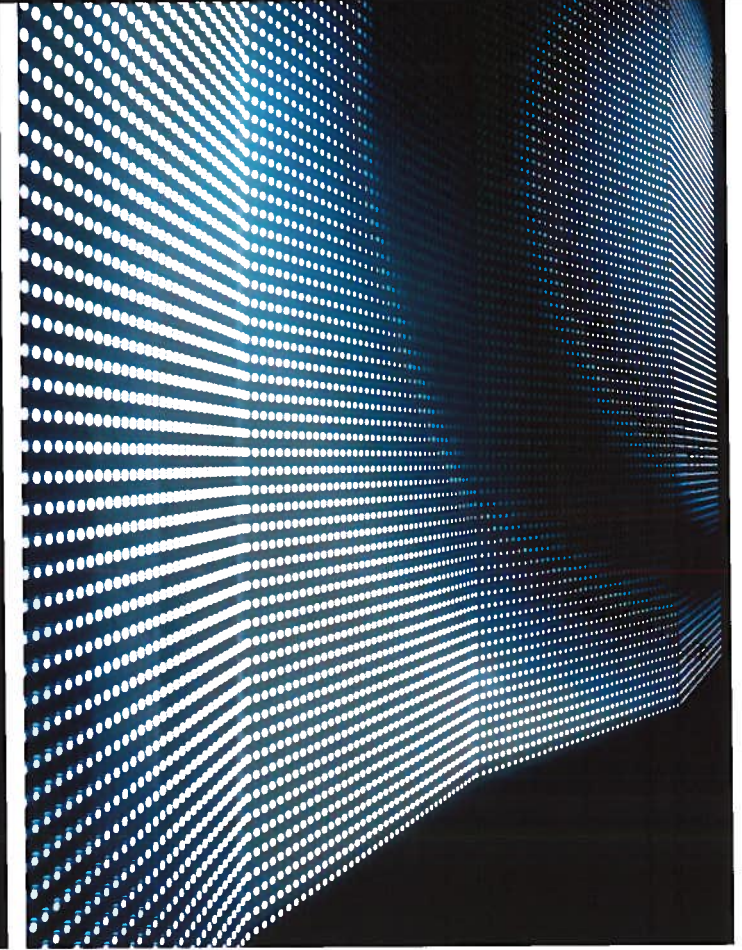
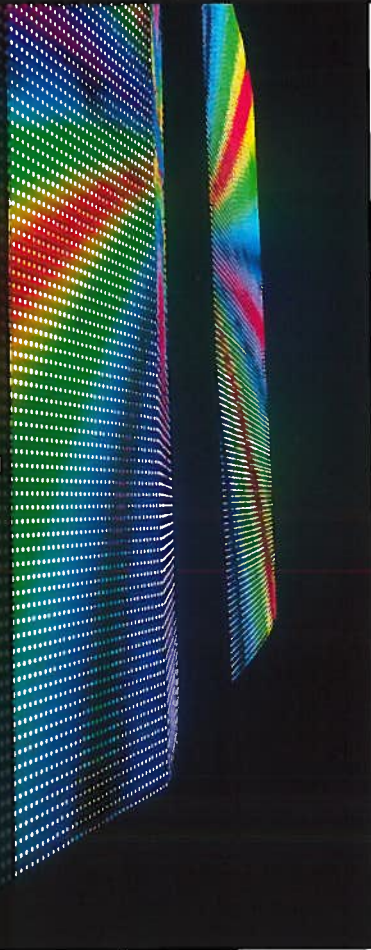
Adjustable 'king ping' enables flexible panel replacement without disassembling the whole screen

Build in fast lock:

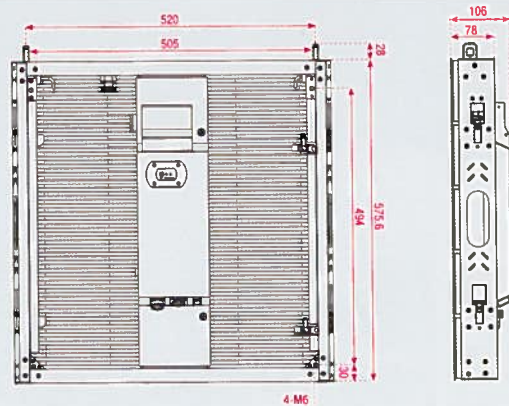
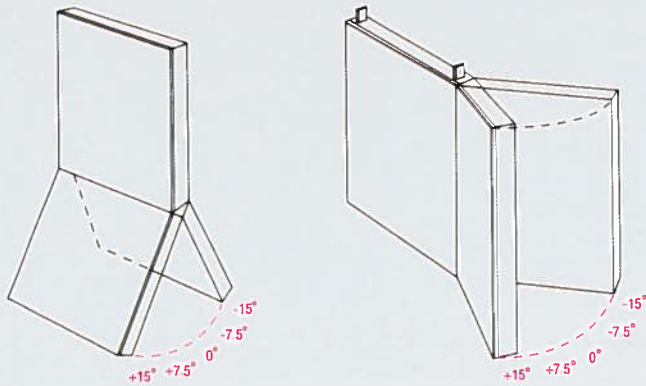
Toolless fast lock with patented protection ensures quick setup time

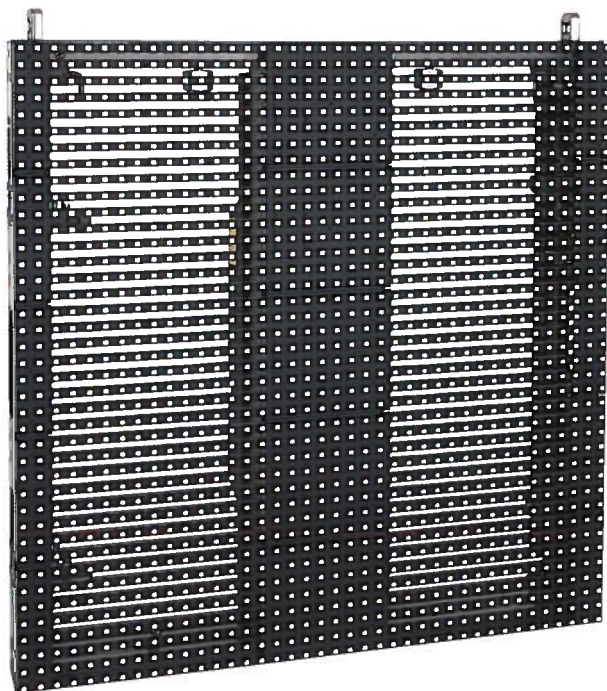
Low Power Consumption:

Maximum power consumption is less than 295W per panel



Adjustable in 5 different angles





Quick maintenance



Adjustable King Pin



Curved mounting possibilities



Pixelmesh P14,4 SMD

101387 Multifunctional Rigging System

DMT's Pixelmesh P14,4 SMD is the latest addition into the successful DMT Pixelmesh series. It combines high transparency with a very flexible rigging system which allows to built the panel in curved shapes.

Every panel can be adjusted in five different angle positions. Both vertical and horizontal. This gives you a nearly unlimited freedom to built your screen in any shape.

The Pixelmesh P14,4 SMD has a high brightness of up to 7000cd/m² with excellent color uniformity to perform in any outdoor application.

The Pixelmesh P14,4 SMD has a waterproof construction which reaches an IP grade of Ip65.

Panel replacement is easy due to the adjustable king pins which allows you to replace a panel easily without disassembling the complete screen.

The Pixelmesh P14,4 SMD is the right tool for the most demanding and creative visual designer.

Power Supply:	AC110-230V / 50-60Hz
Max Power Consumption:	300W
Average Power Consumption:	100W
Cabinet size:	576 x 576 x 100mm
Cabinet area:	0,33m ²
Cabinet weight:	10,5 kg
Pixel density:	4822 pixels/m ²
Viewing Angle Horizontal:	140 degrees
Viewing Angle Vertical:	100 degrees
Luminance:	7000 Nits
Transparency:	35%
Refresh rate:	Variable <800Hz
Control system:	LED Studio
Pixels per screen:	40 x 40
LED Lightsource:	SMD5050 RGB
IP Rating:	IP65
Data connection:	Neutrik Ethercon
Power connection:	Neutrik Powercon
Lifetime:	50.000 Hours
Cooling:	Convection cooling
Maximum hanging height:	15 modules (8,64 m)

Flightcase for 8 pcs. Pixelmesh P14,4 SMD

101389

Size: 128 x 60 x 83cm

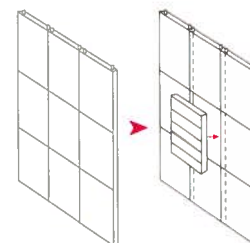
Weight fully loaded: 144kg



Hanging Bracket 1

101388 for 1 piece Pixelscreen P14,4 Tour SMD

Maximum hanging height: 15 modules:
8,64 meter (safety factor 1:10)



Easy panel replacement

Awakenings Festival 2011 (NL),

Client: Monumental Productions (NL)

Production: Jasper Schimmel / 250K (NL)

Stage/Design: 250K (NL)

Decor: Laygho

Videodesign: Eyesupply tv (NL)

Lightdesign: 250K & Jasper Schimmel (NL)

Pyro: Pyrofoor (NL)

Laser: Laser Image (NL)/Video-Operator: Eyesupply (NL)

Light-Operator: Allard de Jaager

Rigging/Lights/Audio: EML Productions - Utrecht (NL)

LED: Crew Factory (NL) / Distribution - Meise (B)

136 x DMT Led P-25 Pixel Mesh Screens Smd Pro (101170)



Extrema Outdoor Oslo 2011 (NO)

Client: Extrema - Eindhoven (NL)
Production: Headquarter / Extrema (NL)
Production Manager Extrema: Bram van Amelsvoort (NL)
Design: Extrema / Wish / 4AV (NL)
Technical Production: 4AV - Tilburg, Rudy Vorstenbosch (NL)
Lights: Oslo Audio - Oslo (NO) / Rombouts - Veldhoven (NL)
Sound: Oslo Audio - Oslo (NO)
Pyro: Unique Pyrotechnic - Gøteborg (NO)
E.U.D.: Distribution - Meise (B)

54x DMT1 Led P-25 Pixel Mesh Screens Smd Pro (101170)



Dominator 2011 - Eersel (NL)

Stagedesign:	Art of Dance / O-Dance (NL)
Production:	Art of Dance / O-Dance (NL)
Director:	250K (NL)
Videodesign:	Eyesupply.tv (NL)
Lightoperator:	The Art of Light (NL)
Videocooperator:	Eyesupply.tv (NL)
Pyro:	Meestervuurwerk (NL)
Laser:	Laser Image (NL)
Led/Video:	Ois3buton - Meise (B)
Sound/Lights:	Purple Group - Schijndel (NL)

100 m² DMT LedPixel screens P-25 Led smd pro (101170)



Reverze 2011 (Sportpaleis & Lotto Arena - Antwerp (B))

Producent	Bass Events (B)
Supplier Lights Sportpaleis (B) :	EML-Productions - Boonmeerbeek (B)
Supplier Lights / Effects / LED screens/Motron control	Distribution - Meise (B)
Director/Light Design	Frank Verstraeten (B)
Decor :	The Maximizer (B)
Laser :	Laser Image (B)
Special Effects	Dawico -Beerse (B)
Supplier Sound & Lights Lotto Arena (B):	PFL - Lille (B)

Lots of DMT Led Pixel screens P-25 Led smd pro (101170)



Inspiring LED Screenproducts for the 21th century and beyond...

Highlite International B.V.

Vestastraat 2, 6468 EX Kerkrade,
The Netherlands.

Phone Sales: +31 - (0)45 - 5667701

Fax Sales: +31 - (0)45 - 5667709

Email: sales@highlite.nl

Phone Export: +31 - (0)45 - 5667706

Fax Export: +31 - (0)45 - 5667709

Email: export@highlite.nl

www.highlite.nl